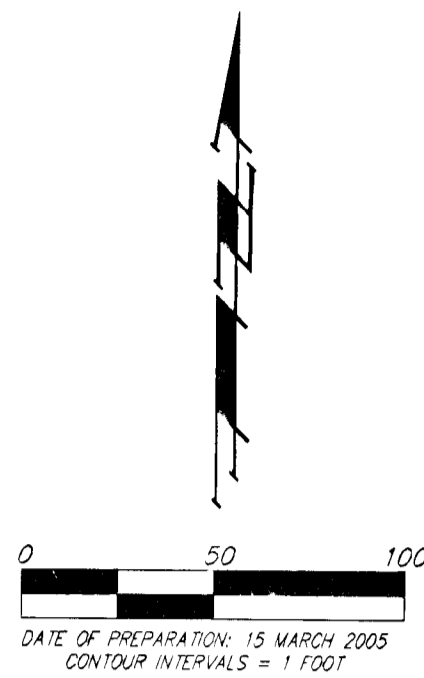


DRAINAGE PLAN
OSBECK ADDITION
 WICHITA, SEDGWICK COUNTY, KANSAS

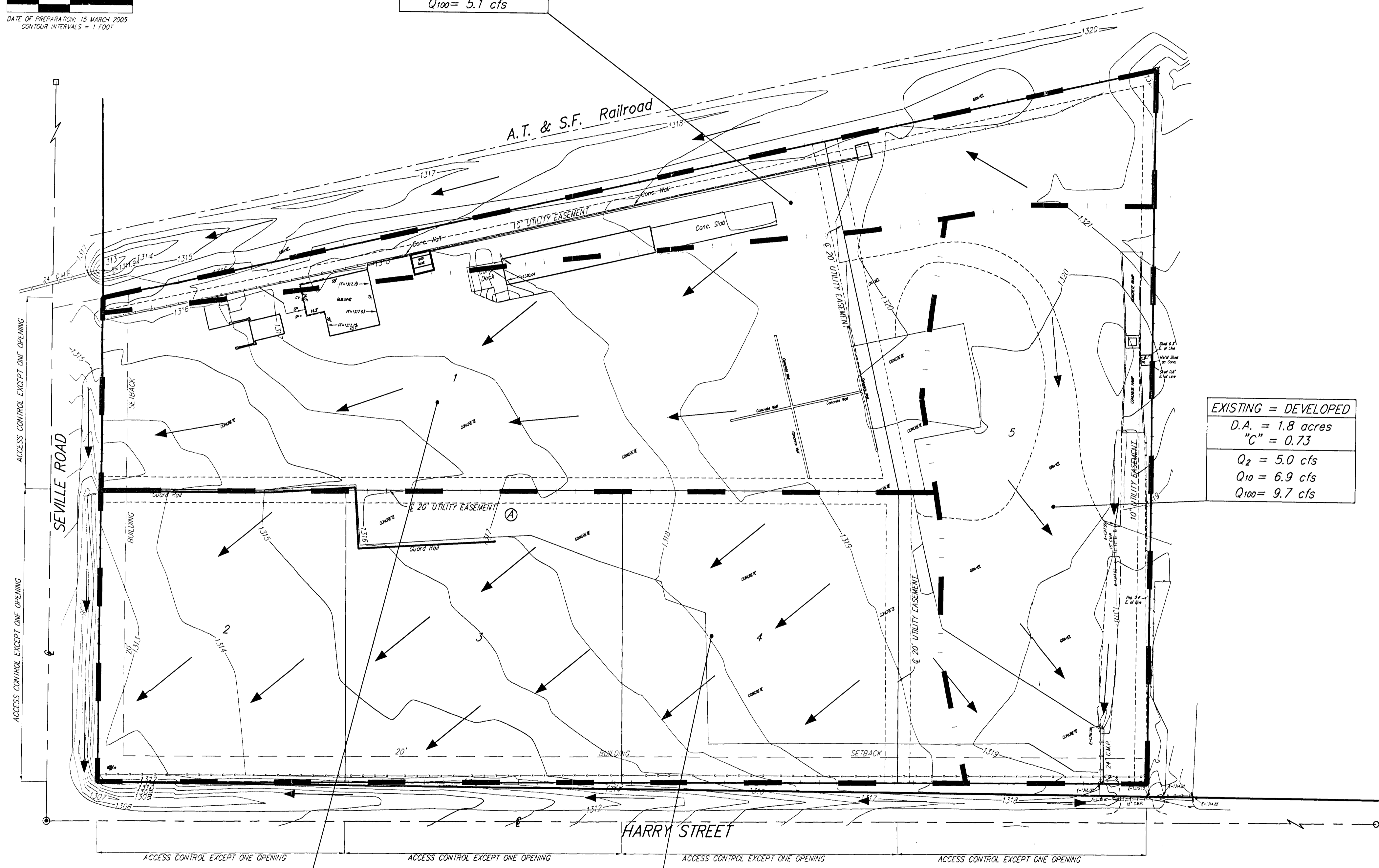


OWNER:
 OSBECK, LLC
 1501 E. FIRST STREET
 WICHITA, KS 67214

BENCHMARK:
 CITY OF WICHITA BENCHMARK
 44' WEST AND 39' SOUTH OF THE
 INTERSECTION OF TYLER & HARRY,
 ELEV. = 1328.97 NGVD29

EXISTING = DEVELOPED
D.A. = 1.0 acres
"C" = 0.70
Q ₂ = 2.7 cfs
Q ₁₀ = 3.7 cfs
Q ₁₀₀ = 5.1 cfs

EXISTING = DEVELOPED
D.A. = 1.8 acres
"C" = 0.73
Q ₂ = 5.0 cfs
Q ₁₀ = 6.9 cfs
Q ₁₀₀ = 9.7 cfs



EXISTING CONDITIONS	DEVELOPED CONDITIONS
D.A. = 2.7 acres	D.A. = 2.7 acres
"C" = 0.80	"C" = 0.84
Q ₂ = 8.3 cfs	Q ₂ = 8.7 cfs
Q ₁₀ = 11 cfs	Q ₁₀ = 12 cfs
Q ₁₀₀ = 16 cfs	Q ₁₀₀ = 17 cfs

EXISTING CONDITIONS	DEVELOPED CONDITIONS
D.A. = 3.5 acres	D.A. = 3.5 acres
"C" = 0.65	"C" = 0.84
Q ₂ = 8.7 cfs	Q ₂ = 11 cfs
Q ₁₀ = 12 cfs	Q ₁₀ = 15 cfs
Q ₁₀₀ = 17 cfs	Q ₁₀₀ = 22 cfs

NOTE: Approximately 0.8 ac-ft of detention will be required upon site development. Size and Location will be determined upon site development.

REVISED 25 JULY 2005
 15 MARCH 2005

B Baughman Company, P.A.
 315 Ellis St. Wichita, KS 67211 P 316-262-7271 F 316-262-0149
 Baughman ENGINEERING | SURVEYING | PLANNING | LANDSCAPE ARCHITECTURE
 F:\HYDRO\Projects\Harry&Seville\harry&seville_drain.dwg