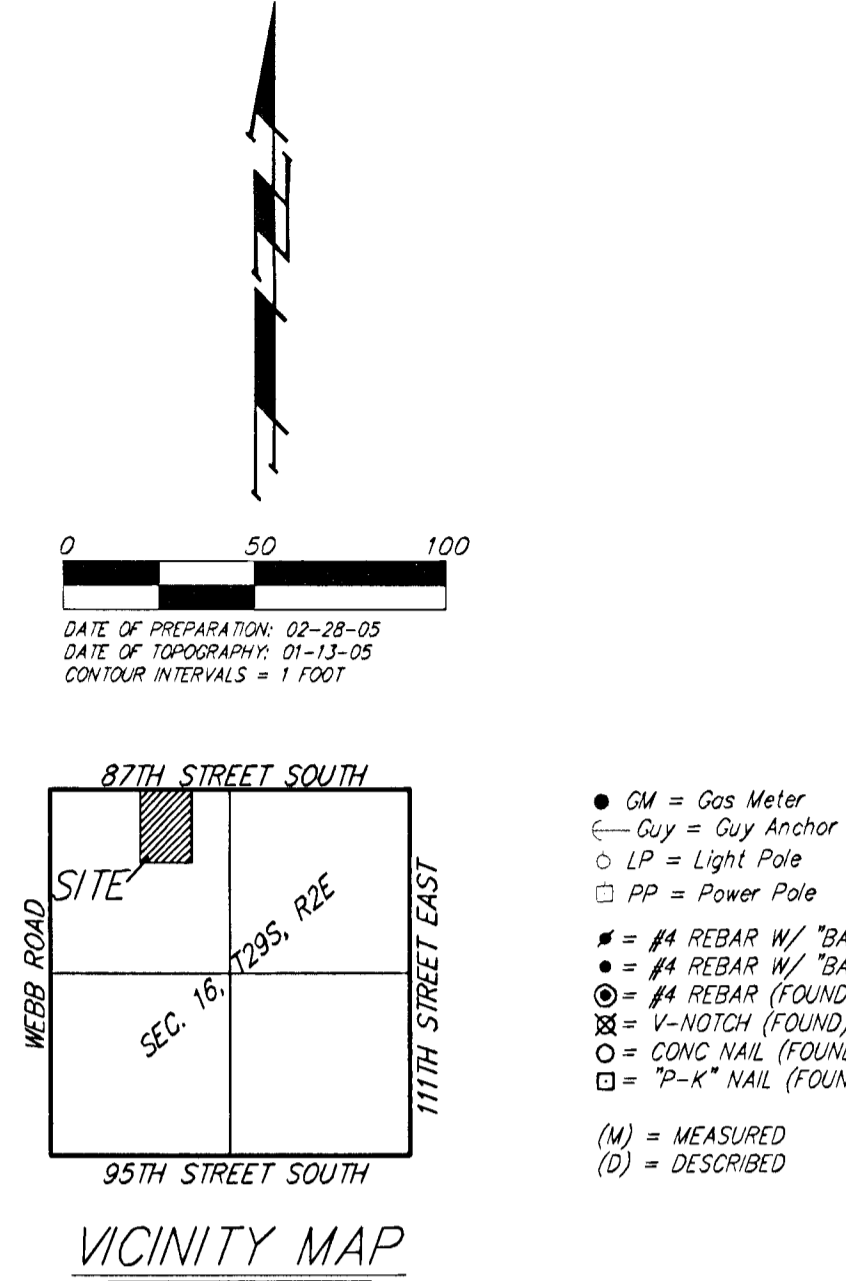


ONE-STEP FINAL PLAT  
**OSBECK ADDITION**  
 WICHITA, SEDGWICK COUNTY, KANSAS

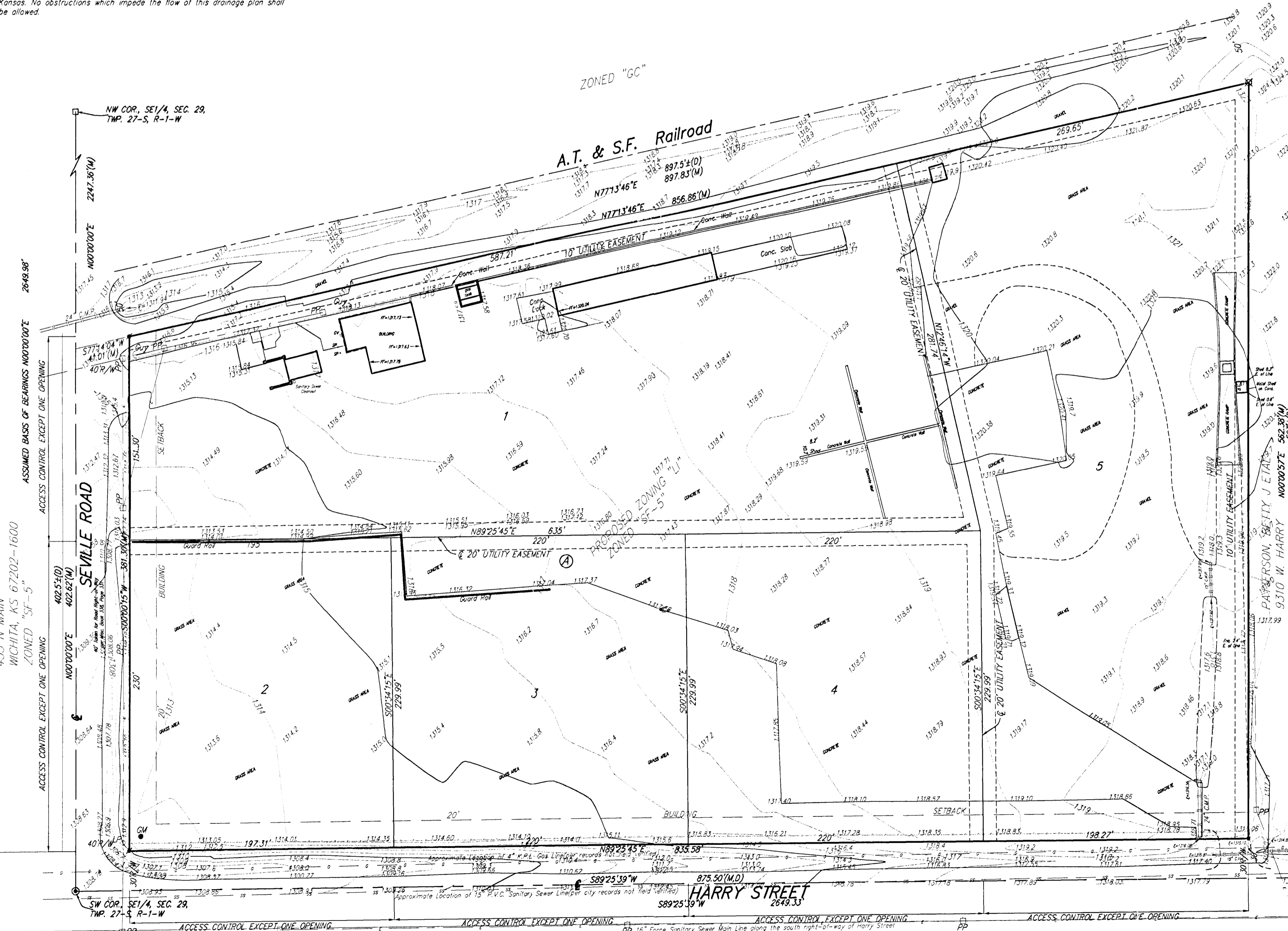


NOTE:  
 A drainage plan has been developed for this subdivision and is on file with the City of Wichita, Kansas. Drainage intent shall remain as depicted or as modified with the approval of the City Engineer of the City of Wichita, Kansas. No obstructions which impede the flow of this drainage plan shall be allowed.

- CM = Gas Meter
- Guy = Guy Anchor
- LP = Light Pole
- PP = Power Pole
- #4 REBAR W/ "BAUGHMAN" CAP (FOUND)
- #4 REBAR W/ "BAUGHMAN" CAP (SET)
- ⊗ #4 REBAR (FOUND)
- ⊗ #4 NOTCH (FOUND)
- CONC NAIL (FOUND)
- "P-K" NAIL (FOUND)
- (M) = MEASURED
- (D) = DESCRIBED

OWNER:  
 OSBECK, LLC  
 1501 E. FIRST STREET  
 WICHITA, KS 67214

BENCHMARK:  
 CITY OF WICHITA BENCHMARK  
 44 WEST AND 39' SOUTH OF THE  
 INTERSECTION OF TYLER & HARRY,  
 ELEV. = 1328.97 NGVD29



State of Kansas) SS  
 Sedgwick County) We, Baughman Company, P.A., Surveyors in  
 aforesaid county and state do hereby certify that we have surveyed and  
 platted "OSBECK ADDITION", Wichita, Sedgwick County, Kansas and that the  
 accompanying plat is a true and correct exhibit of the property surveyed,  
 described as Beginning at the Southwest Corner of the Southeast Quarter  
 of Section 29, Township 27 South, Range 1 West of the 6th P.M.,  
 Sedgwick County, Kansas; thence East on the South line of said  
 Southeast Quarter, 875.5 feet; thence North parallel to the West line of  
 said Southeast Quarter, 593 feet, more or less, to the South line of the  
 A.T. & S.F. Railroad Right of Way, thence Westerly on said South line  
 897.5 feet, more or less, to the West line of said Southeast Quarter,  
 thence South 402.5 feet to the Point of Beginning.

Existing public easements and dedications  
 being vacated by virtue of K.S.A. 12-512(b).  
 Baughman Company, P.A.  
 \_\_\_\_\_, Surveyor  
 Michael G. Conrey

This plat of "OSBECK ADDITION", Wichita,  
 Sedgwick County, Kansas has been submitted to and approved by the  
 Wichita-Sedgwick County Metropolitan Area Planning Commission, Wichita,  
 Kansas.

Dated this \_\_\_\_\_ day of \_\_\_\_\_, 2005.  
 Wichita-Sedgwick County Metropolitan Area Planning Commission  
 \_\_\_\_\_, Chair  
 Morris K. Dunlap  
 \_\_\_\_\_, Secretary  
 John L. Schlegel

This plat approved and all dedications  
 shown hereon accepted by the City Council of the City of Wichita,  
 Kansas, this \_\_\_\_\_ day of \_\_\_\_\_, 2005.

\_\_\_\_\_ , Mayor  
 Carlos Mayans  
 \_\_\_\_\_ , City Clerk  
 Karen Sublett

Know all men by these presents that we,  
 the undersigned, have caused the land in the surveyors certificate to be  
 platted into Lots, and a Block to be known as "OSBECK ADDITION", Wichita,  
 Sedgwick County, Kansas. The utility easements are hereby granted as  
 indicated for the construction and maintenance of all public utilities.  
 Access controls shall be as depicted on the face of the plat and are  
 hereby granted to the City of Wichita, Kansas. The permitted opening  
 locations shall be as determined by the City Engineer of the City of  
 Wichita, Kansas.

Osbeck, LLC  
 \_\_\_\_\_, Member  
 John H. Osborne

Reviewed in accordance with K.S.A. 58-2005  
 on this \_\_\_\_\_ day of \_\_\_\_\_, 2005.

State of Kansas) SS  
 Sedgwick County) The foregoing instrument acknowledged before  
 me, this \_\_\_\_\_ day of \_\_\_\_\_, 2005, by John Osborne, Member of  
 Osbeck, LLC, on behalf of the limited liability company.

\_\_\_\_\_, Notary Public  
 My App't. Exp. \_\_\_\_\_

Entered on transfer record this \_\_\_\_\_ day  
 of \_\_\_\_\_, 2005.

State of Kansas) SS  
 Sedgwick County) This is to certify that this plat has been  
 filed for record in the office of the Register of Deeds, this \_\_\_\_\_ day  
 of \_\_\_\_\_, 2005 at \_\_\_\_\_ o'clock \_\_\_\_\_ M.; and is duly recorded.

\_\_\_\_\_, Register of Deeds  
 Bill Meek  
 \_\_\_\_\_, Deputy  
 Linda Kizzire

BOARD OF PARK COMMISSIONERS  
 455 N. MAIN  
 WICHITA, KS 67202-1600  
 ZONED "SF-5"

WICHITA AIRPORT AUTHORITY  
 2173 AIR CARGO RD  
 WICHITA, KS 67209-1958  
 ZONED "SF-5"

28 FEBRUARY 2005

**Baughman Company, P.A.**  
 315 Ellis St. Wichita, KS 67211 P 316-262-7211 F 316-262-0149

**Baughman** ENGINEERING | SURVEYING | PLANNING | LANDSCAPE ARCHITECTURE

F:\PLAT\HARRY&SEVILLE\DWG\HARRY&SEVILLE.DWG-RKR