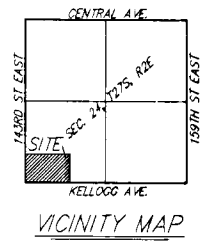
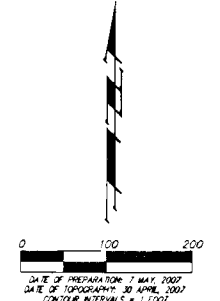
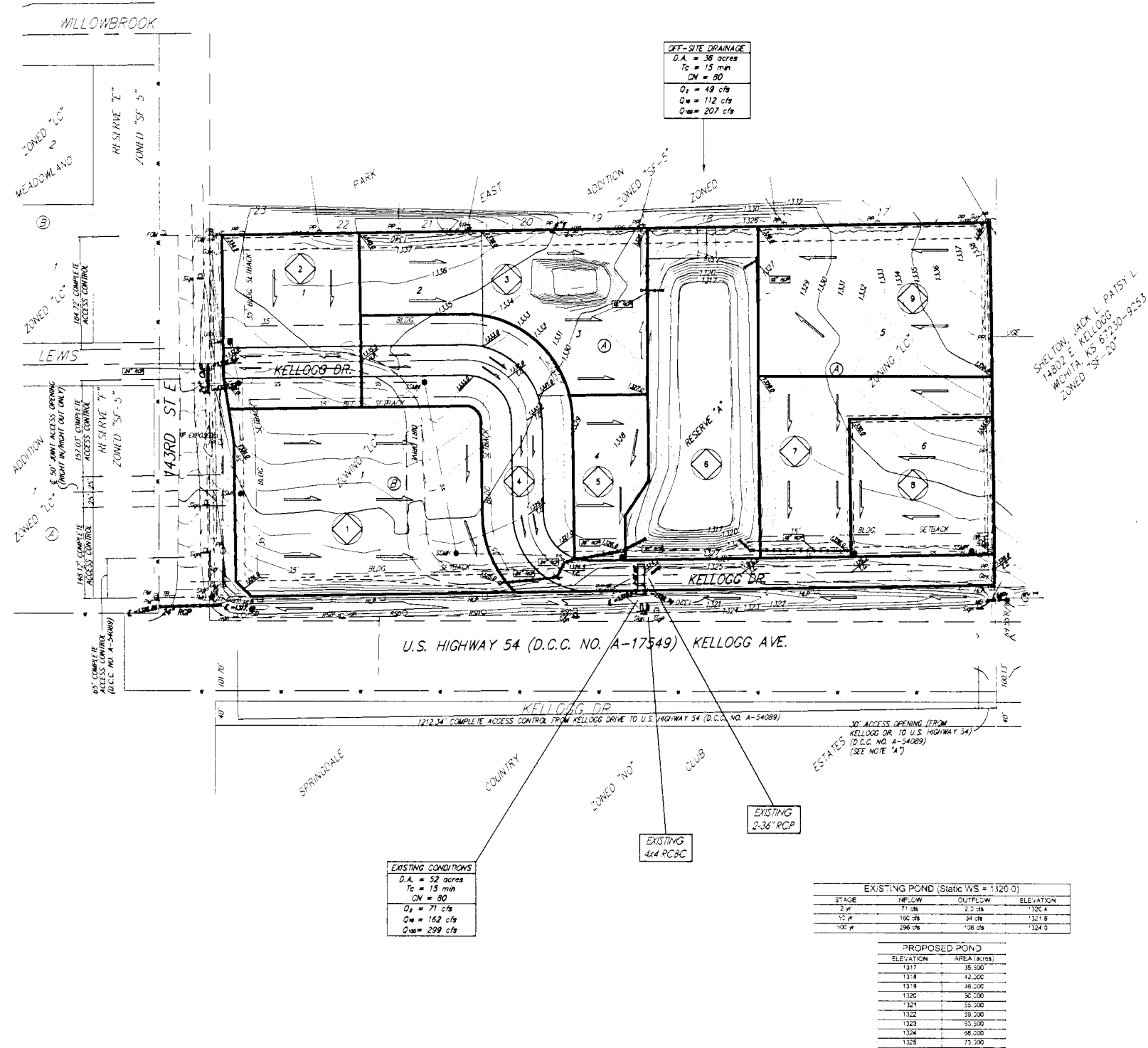


# DRAINAGE & GRADING PLAN PRAIRIE POND PLAZA 2ND ADDITION WICHITA, SEDGWICK COUNTY, KANSAS



**MINIMUM BUILDING PAD ELEVATIONS FOR LOWEST OPENING TO THE STRUCTURES**

LOTS	BLOCK	ELEVATION
1-4,5	A	1126.40

**BENCHMARK**  
"1" CUT ON STATIC SIGNAL LIGHT POLE BASE  
NW CORNER OF KELLOGG & 143RD ST. E.  
ELEV. = 1126.14 MONDOS (1/21/21 CITY DATUM)

"2" CUT TOP OF MUR AT W. END OF HEADWALL  
700' E. OF E. 143RD ST. & 112' N. OF THE  
S. LINE OF THE CORNER OF SEC. 24, TWP. 21-S,  
R-2-E.  
ELEV. = 1126.14 MONDOS (1/21/21 CITY DATUM)

**DANCE**  
TAYLOR ENTERPRISES, INC.  
ATTN: DAN TAYLOR, JR.  
1508 W. WOODLARK, SUITE 400  
WICHITA, KANSAS 67208  
(316) 634-3321

**NOTE:** No FEMA SFHA exists on this property as of May 10, 2007.

SWS shown are to serve their respective lots to convey drainage to the detention area. Lots are expected to have internal SWS to connect to the as-shown inlets. Internal SWS will be per Site Plans and are not proposed/shown here.

Developed	2yr	10yr	100yr
Intensity	2.83	5.21	7.37
Rational C	0.49	2.50	2.7

Basin ID	Area acres	Developed Flowrates		
		2yr cfs	10yr cfs	100-yr cfs
1	2.9	2.4	8.3	15
2	1.5	2.8	4.4	7.7
3	2.0	3.8	5.8	10.3
4	2.8	5.3	8.2	14
5	0.7	1.3	2.0	3.6
6	2.3	4.3	6.7	11.9
7	1.4	2.6	4.1	7.2
8	1.2	2.3	3.5	6.2
9	2.2	4.1	6.4	11.3
<b>TOTAL</b>	<b>17.0</b>	<b>32</b>	<b>50</b>	<b>88</b>