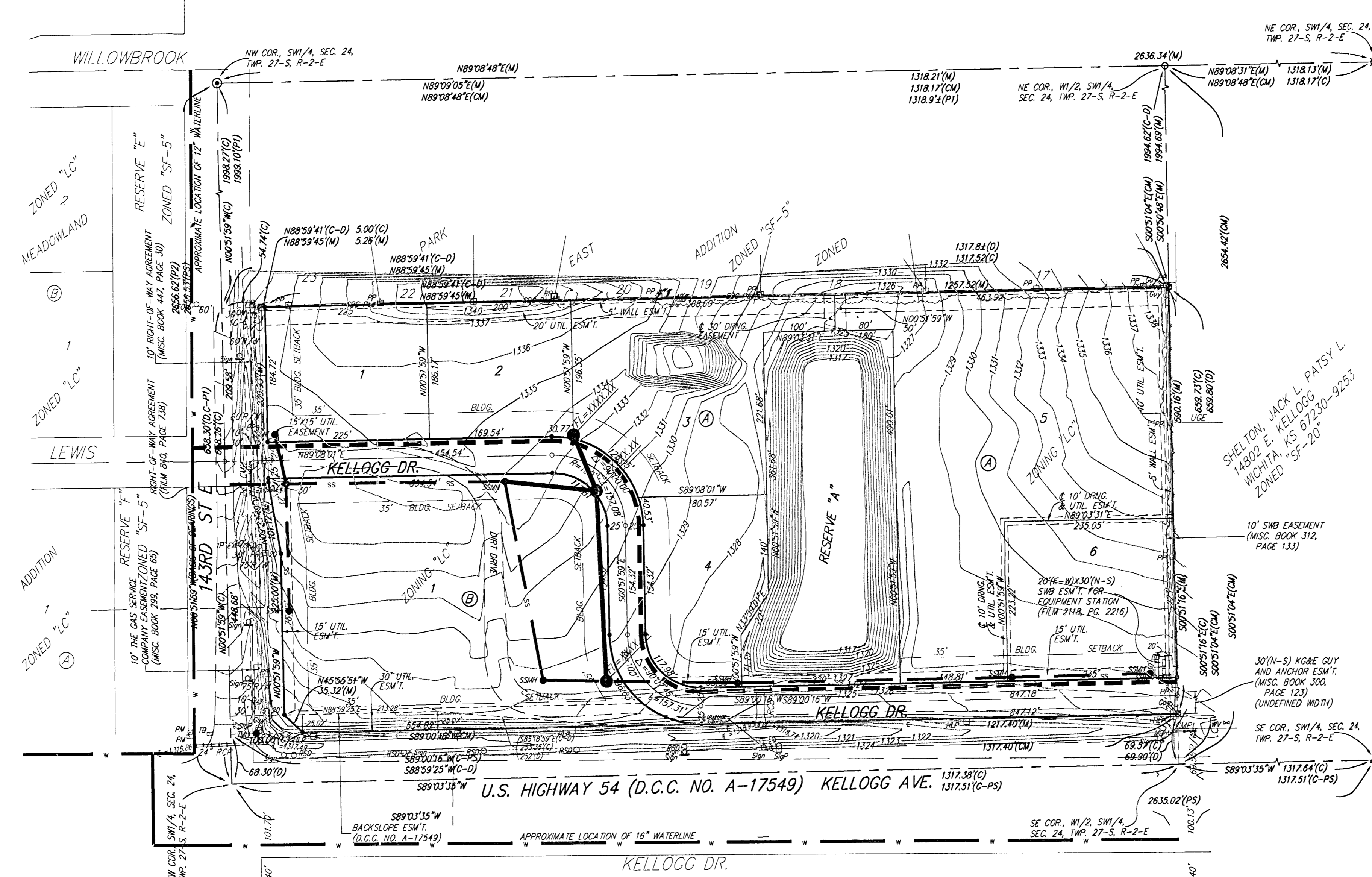


UTILITY PLAN

PRAIRIE POND PLAZA 2ND ADDITION

WICHITA, SEDGWICK COUNTY, KANSAS

- LEGEND**
- Proposed Water Line (8" Unless Noted Otherwise)
 - - - Existing Water Line (8" Unless Noted Otherwise)
 - Proposed Sanitary Sewer Line (8" Unless Noted Otherwise)
 - - - Existing Sanitary Sewer Line (8" Unless Noted Otherwise)
 - Proposed Sanitary Sewer Manhole
 - ♀ Proposed Fire Hydrant
 - XXXXXX Proposed Sanitary Sewer Flow



NOTE:
THE KANSAS DEPARTMENT OF TRANSPORTATION RESERVES THE RIGHT TO CLOSE THE CROSSOVER MEDIAN IN U.S. HIGHWAY 54 AT THE EAST LINE OF COMMUNITY UNIT PLAN DP-273 AT SUCH TIME AS THEY DEEM NECESSARY.

NOTE:
A AT SUCH TIME AS THE PROPOSED KELLOGG DRIVE IS CONSTRUCTED FROM 143RD STREET EAST TO 159TH STREET EAST, THE KANSAS DEPARTMENT OF TRANSPORTATION SHALL HAVE THE RIGHT TO CLOSE THE 30 FOOT ACCESS OPENING, (PER D.C.C. NO. A-54089), ALONG THE EAST LINE OF COMMUNITY UNIT PLAN DP-273 FROM U.S. HIGHWAY 54.

NOTE:
A drainage plan has been developed for this subdivision and is on file with the City of Wichita, Kansas. Drainage intent shall remain as depicted or as modified with the approval of the City Engineer of the City of Wichita, Kansas. No obstructions which impede the flow of this drainage plan shall be allowed.

NOTE:
MOBE GUY AND ANCHOR EASEMENT IN THE SW/4 OF SEC. 24, TWP. 27-S, R-2-E FOR MULTIPLE SUPPORTS OF AN E-W TRANSMISSION LINE LOCATED IN U.S. HIGHWAY 54 RIGHT-OF-WAY (UNDEFINED WIDTHS AND LOCATIONS) (MISC. BOOK 93, PAGE 419)

NOTE:
TREE TRIMMING PERMIT ALLOWING ACCESS TO LAND ADJOINING THE NORTH RIGHT-OF-WAY LINE OF U.S. HIGHWAY 54 FOR THE PURPOSE OF TRIMMING TREES AND HEDGES AS NECESSARY TO PREVENT CONTACT WITH AN E-W TRANSMISSION LINE LOCATED IN SAID U.S. HIGHWAY 54 RIGHT-OF-WAY. (TRIMMING AREA OF UNDEFINED WIDTH) (MISC. BOOK 93, PAGE 62)

NOTE:
ADDITIONAL BUILDING SETBACK REQUIREMENTS PER COMMUNITY UNIT PLAN DP-273.

LOTS	BLOCK	ELEVATION
3,4,5	A	1328.40

BENCHMARK:
"□" CUT ON TRAFFIC SIGNAL LIGHT POLE BASE, NW CORNER OF KELLOGG & 143RD ST. E. ELEV. = 1318.51 NVD29 (131.21 CITY DATUM)

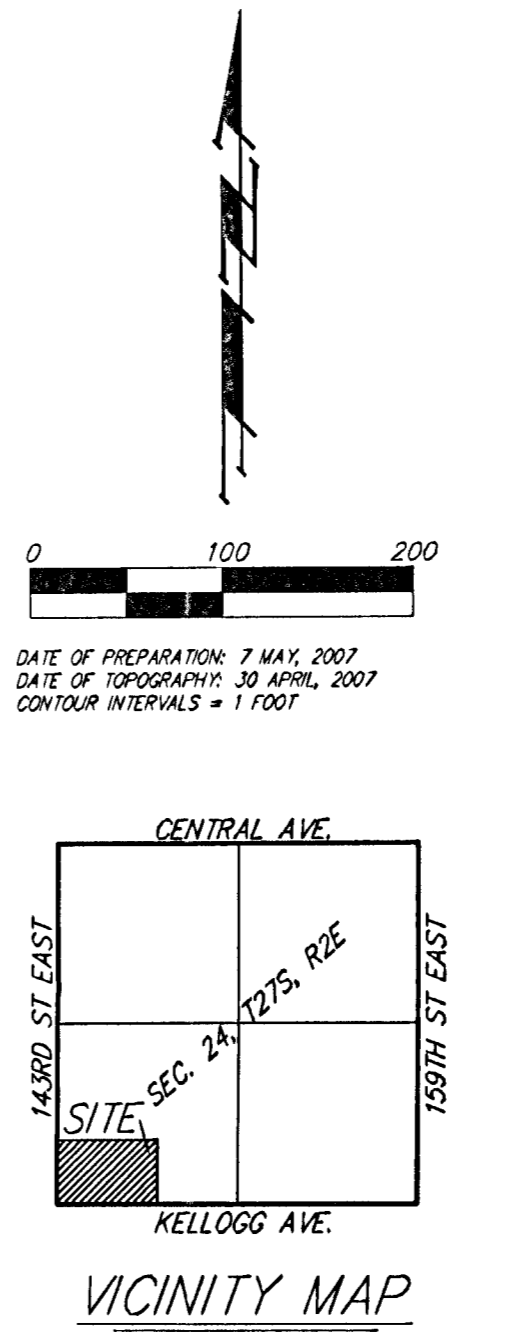
"□" CUT, TOP OF WEIR AT W. END OF HEADWALL 230 1/2 E. OF & 143RD ST. E. & 112 1/2 N. OF THE S. LINE OF THE SW/4 OF SEC. 24, TWP. 27-S, R-2-E. ELEV. = 1326.74 NVD29 (139.34 CITY DATUM)

OWNER:
TAYLOR ENTERPRISES, INC
ATTN: DAN TAYLOR, JR.
1939 N. WOODLAWN, SUITE 400
WICHITA, KANSAS 67208
(316) 634-3321

- = #4 REBAR W/ "BAUGHMAN" CAP (SET)
- = #5 REBAR (FOUND)
- ⊙ = 1/2" PINCHED IRON (FOUND)
- ⊗ = #4 REBAR W/ "TILSI" CAP (FOUND)
- ⊗ = #4 REBAR W/ "BAUGHMAN" CAP (FOUND)
- ⊗ = 1/2" IRON (FOUND)
- △ = LEAD PLUG W/ TACK (FOUND)

- (M) = MEASURED
- (C) = CALCULATED
- (D) = DESCRIBED
- (PS) = PREVIOUS SURVEY
- (CM) = CALCULATED PER MEASURED INFO.
- (PI) = PLATTED PER PARK EAST
- (P2) = PLATTED PER MEADOWLAND ADD.
- (C-P1) = CALCULATED PER PARK EAST PLAT
- (C-D) = CALCULATED PER DESCRIBED INFO.
- (C-PS) = CALCULATED PER PREVIOUS SURVEY

- PP □ = Power Pole
- EB □ = Electric Box
- GAU □ = Guy Anchor
- HL □ = High Line Pole
- LP □ = Light Pole
- SBC Ped □ = SBC Pedestal
- PM □ = Piping Marker
- FM □ = Cor. Fiberoptic Marker
- SP □ = Signal Pole
- Sign □ = Sign
- RSD □ = Road Side Delineator
- TR □ = Traffic Box
- TM ● = Traffic Manhole
- WV + = Water Valve
- MB = Molt Box



PRAIRIE POND PLAZA 2ND ADDITION

MAY 2007

Baughman Company, P.A.
315 Ella St. Wichita, KS 67211 P 316-262-7271 F 316-262-0149

ENGINEERING | SURVEYING | PLANNING | LANDSCAPE ARCHITECTURE

E:\PLAT\PRAIRIE POND PLAZA ADDITION\DWG\PRAIRIEPONDPLAZA.DWG\MOC