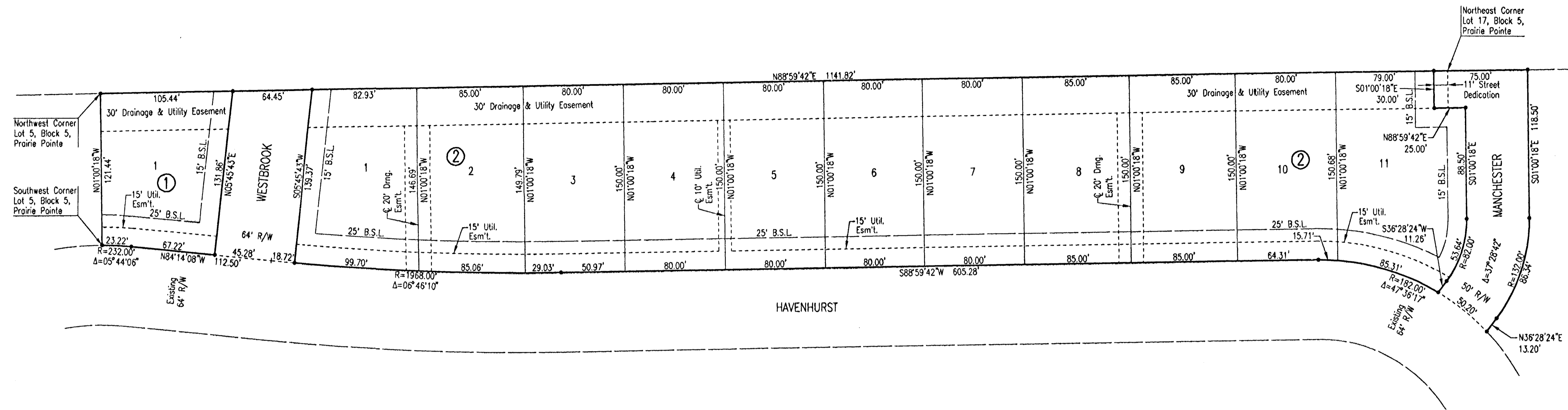


PRAIRIE POINTE 2ND

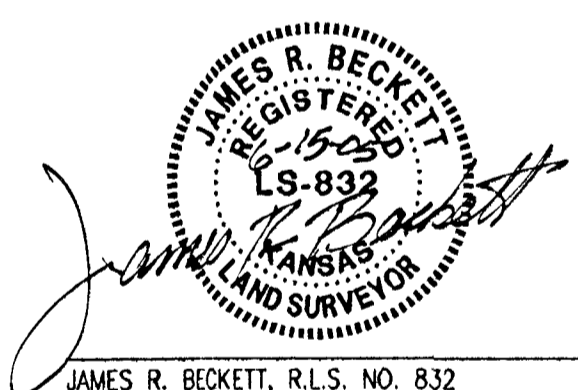
AN ADDITION TO WICHITA, SEDGWICK COUNTY, KANSAS



SCALE: 1" = 50'

• = 1/2" REBAR WITH PEC CAP UNLESS OTHERWISE NOTED
B.S.L. = BUILDING SETBACK LINE

- BENCHMARKS:**
- BM 21-A CHISELED SQUARE ON NORTH END 30"x19" RCP ON WEST SIDE OF TRIPLE PIPE AT THE NORTHWEST CORNER OF 37TH ST. NORTH AND MAIZE ROAD. ELEV. = 1354.18 N.G.V.D. (168.78 CITY DATUM)
 - BM 21-C STEP NAILS ON NORTH FACE OF CORNER POST ON SOUTH SIDE OF 37TH ST. NORTH 950± WEST OF 37TH ST. NORTH AND MAIZE ROAD. ELEV. = 1358.24 N.G.V.D. (168.84 CITY DATUM)
 - BM 21-D CHISELED SQUARE ON CONCRETE BASE OF BRICK FENCE POST ON SOUTH SIDE OF 37TH ST. NORTH 1070± EAST OF 1/2 MILE LINE. ELEV. = 1355.56 N.G.V.D. (168.16 CITY DATUM)
 - BM 21-E CHISELED SQUARE ON CONCRETE BASE OF BRICK FENCE POST ON SOUTH SIDE OF 37TH ST. NORTH 440± EAST OF 1/2 MILE LINE. ELEV. = 1357.01 N.G.V.D. (169.61 CITY DATUM)



JAMES R. BECKETT, R.L.S. NO. 832
PROFESSIONAL ENGINEERING CONSULTANTS, P.A.

THE STREETS ARE HEREBY DEDICATED TO AND FOR THE USE OF THE PUBLIC.
EASEMENTS FOR THE CONSTRUCTION AND MAINTENANCE OF PUBLIC UTILITIES AND DRAINAGE ARE HEREBY GRANTED.

MINIMUM PAD ELEVATIONS (LOWEST OPENING) SHALL BE AS FOLLOWS:

BLOCK	LOT	ELEVATION (N.G.V.D.)	City Datum
BLOCK 1	LOT 1	1363.8	176.4
	LOT 2	1362.7	175.3
BLOCK 2	LOTS 1-4	1362.0	174.6
	LOTS 5-7	1361.6	174.2
	LOTS 8-11	1361.6	174.2

A DRAINAGE PLAN HAS BEEN APPROVED FOR THIS PLAT. ALL DRAINAGE EASEMENTS AND RIGHTS-OF-WAY SHALL REMAIN AT ESTABLISHED GRADES AND UNOBSTRUCTED TO ALLOW FOR THE CONVEYANCE OF STORM WATER, UNLESS MODIFIED WITH THE APPROVAL OF THE CITY ENGINEER.

STATE OF KANSAS }
COUNTY OF SEDGWICK } SS

WE, PROFESSIONAL ENGINEERING CONSULTANTS, P.A., ENGINEERS AND SURVEYORS IN THE STATE OF KANSAS, DO HEREBY CERTIFY THAT ON THIS 15th DAY OF June, 2005, WE HAVE SURVEYED AND PLATTED PRAIRIE POINTE 2ND, AN ADDITION TO WICHITA, SEDGWICK COUNTY, KANSAS, INTO LOTS AND BLOCKS; THE SAME BEING DESCRIBED AS FOLLOWS:

A REPLAT OF LOTS 5, 6, 7, 8, 9, 10, 11, 12, 13, 14, 15, 16, AND 17, BLOCK 5, TOGETHER WITH THAT PORTION OF MANCHESTER STREET THAT IS BETWEEN LOTS 9 AND 10, BLOCK 3 AND LOT 17, BLOCK 5, PRAIRIE POINTE, AN ADDITION TO WICHITA, SEDGWICK COUNTY, KANSAS.

ALL PUBLIC EASEMENTS LYING WITHIN THE ABOVE DESCRIBED TRACT OF LAND ARE HEREBY VACATED AND REPLATTED BY VIRTUE OF KSA 12-512(b) AMENDED.

KNOW ALL MEN BY THESE PRESENTS THAT WE, THE UNDERSIGNED PROPERTY OWNERS OF THE LAND AS ABOVE SET FORTH IN THE SURVEYOR'S CERTIFICATE, HAVE CAUSED THE LAND TO BE SURVEYED AND PLATTED INTO LOTS, BLOCKS, AND STREETS; THE SAME TO BE KNOWN AS PRAIRIE POINTE 2ND, AN ADDITION TO WICHITA, SEDGWICK COUNTY, KANSAS.

OWNER:
JAMES L. SMITH REVOCABLE TRUST

Thelma Ruth Smith
THELMA RUTH SMITH, TRUSTEE

THELMA RUTH SMITH REVOCABLE TRUST

Thelma Ruth Smith
THELMA RUTH SMITH, TRUSTEE

STATE OF KANSAS }
COUNTY OF SEDGWICK } SS

THIS INSTRUMENT WAS ACKNOWLEDGED BEFORE ME ON THIS 15th DAY OF June, 2005, BY THELMA RUTH SMITH, TRUSTEE OF THE JAMES L. SMITH REVOCABLE TRUST.

Mary A. Farrar, NOTARY PUBLIC
MARY A. FARRAR

MY APPOINTMENT EXPIRES: 2/27/08

STATE OF KANSAS }
COUNTY OF SEDGWICK } SS

THIS INSTRUMENT WAS ACKNOWLEDGED BEFORE ME ON THIS 15th DAY OF June, 2005, BY THELMA RUTH SMITH, TRUSTEE OF THE THELMA RUTH SMITH REVOCABLE TRUST.

Mary A. Farrar, NOTARY PUBLIC
MARY A. FARRAR

MY APPOINTMENT EXPIRES: 2/27/08

THIS PLAT OF PRAIRIE POINTE 2ND HAS BEEN SUBMITTED TO AND APPROVED BY THE WICHITA-SEDGWICK COUNTY METROPOLITAN AREA PLANNING COMMISSION, WICHITA, KANSAS.

DATED THIS _____ DAY OF _____, 2005.

WICHITA-SEDGWICK COUNTY METROPOLITAN AREA PLANNING COMMISSION

_____, CHAIRMAN
MORRIS K. DUNLAP

_____, SECRETARY
JOHN L. SCHLEGEL

REVIEWED IN ACCORDANCE WITH K.S.A. 58-2005 ON THIS _____ DAY OF _____, 2005.

TRICIA L. ROBELLO, LS #1246
DEPUTY COUNTY SURVEYOR
SEDGWICK COUNTY KANSAS

THIS PLAT IS APPROVED AND ALL DEDICATIONS SHOWN HEREON, IF ANY ARE ACCEPTED BY THE CITY COUNCIL OF THE CITY OF WICHITA, KANSAS, THIS _____ DAY OF _____, 2005.

_____, MAYOR
CARLOS MAYANS

_____, CITY CLERK
KAREN SUBLETT

ENTERED ON TRANSFER RECORD THIS _____ DAY OF _____, 2005.

_____, COUNTY CLERK
DON BRACE

THIS IS TO CERTIFY THAT THIS INSTRUMENT WAS FILED FOR RECORD IN THE REGISTER OF DEEDS OFFICE AT _____, MO., ON THE _____ DAY OF _____, 2005.

_____, REGISTER OF DEEDS
BILL MEEK

_____, DEPUTY
TONYA BUCKINGHAM