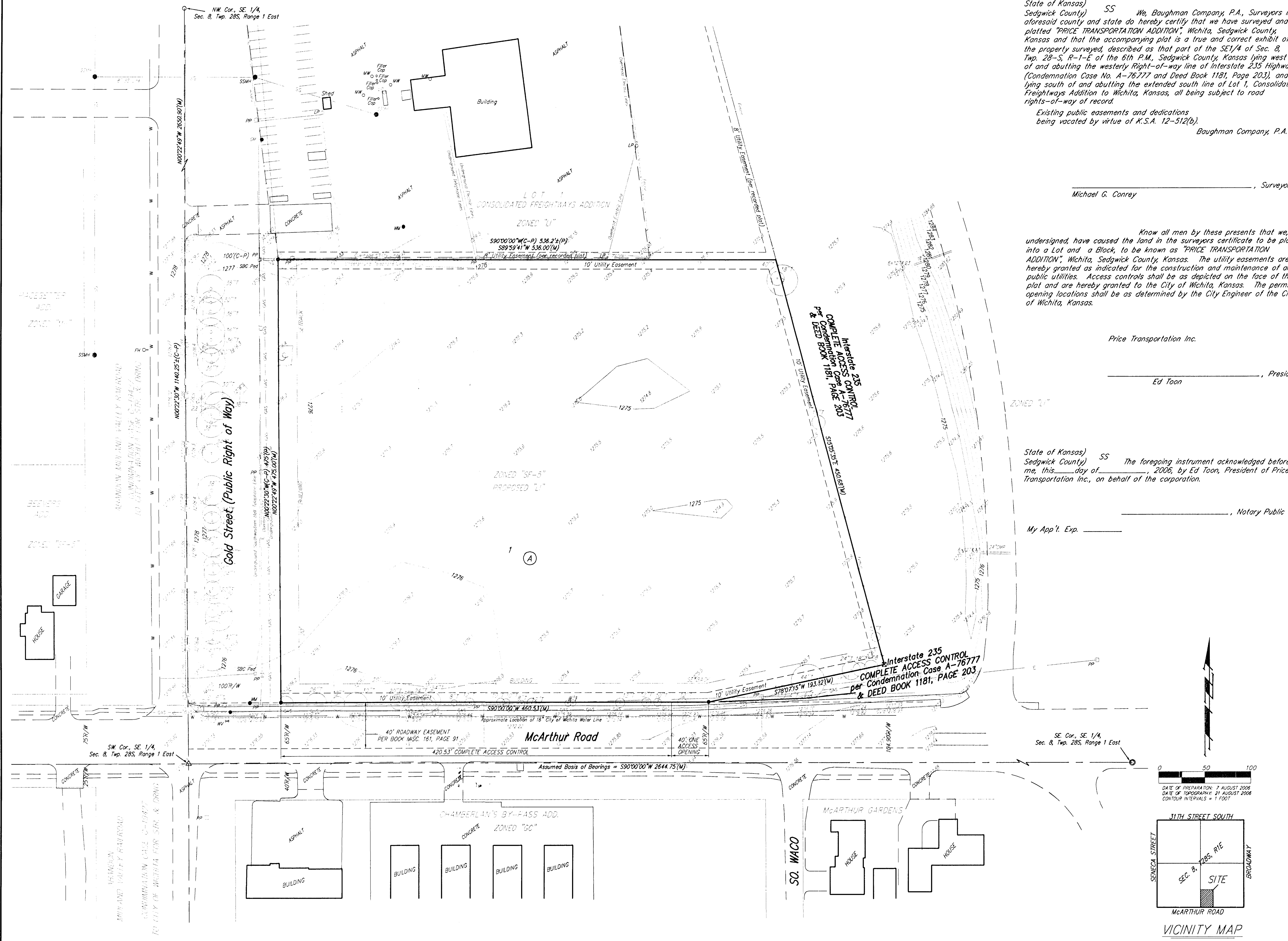


ONE-STEP FINAL PLAT

PRICE TRANSPORTATION ADDITION

WICHITA, SEDGWICK COUNTY, KANSAS



State of Kansas) SS We, Baughman Company, P.A., Surveyors in
Sedgwick County) do hereby certify that we have surveyed and
platted "PRICE TRANSPORTATION ADDITION", Wichita, Sedgwick County,
Kansas and that the accompanying plat is a true and correct exhibit of
the property surveyed, described as that part of the SE1/4 of Sec. 8,
Twp. 28-S, R-1-E of the 6th P.M., Sedgwick County, Kansas lying west
of and abutting the westerly Right-of-way line of Interstate 235 Highway,
(Condemnation Case No. A-76777 and Deed Book 1181, Page 203), and
lying south of and abutting the extended south line of Lot 1, Consolidated
Freightways Addition to Wichita, Kansas, all being subject to road
rights-of-way of record.

Existing public easements and dedications
being vacated by virtue of K.S.A. 12-512(b).
Baughman Company, P.A.

This plat of "PRICE TRANSPORTATION
ADDITION", Wichita, Sedgwick County, Kansas has been submitted to and
approved by the Wichita-Sedgwick County Metropolitan Area Planning
Commission, Wichita, Kansas.
Dated this _____ day of _____, 2006.
Wichita-Sedgwick County Metropolitan Area Planning Commission

_____, Chair
Harold L. Warner, Jr.
_____, Secretary
John L. Schlegel

_____, Surveyor
Michael G. Conroy

Know all men by these presents that we, the
undersigned, have caused the land in the surveyors certificate to be platted
into a Lot and a Block, to be known as "PRICE TRANSPORTATION
ADDITION", Wichita, Sedgwick County, Kansas. The utility easements are
hereby granted as indicated for the construction and maintenance of all
public utilities. Access controls shall be as depicted on the face of the
plat and are hereby granted to the City of Wichita, Kansas. The permitted
opening locations shall be as determined by the City Engineer of the City
of Wichita, Kansas.

This plat approved and all dedications
shown hereon accepted by the City Council of the City of Wichita,
Kansas, this _____ day of _____, 2006.

_____, Mayor
Carlos Mayans
_____, City Clerk
Karen Sublett

Price Transportation Inc.
_____, President
Ed Toon

Reviewed in accordance with K.S.A. 58-2005
on this _____ day of _____, 2006.

State of Kansas) SS The foregoing instrument acknowledged before
Sedgwick County) me, this _____ day of _____, 2006, by Ed Toon, President of Price
Transportation Inc., on behalf of the corporation.

_____, Notary Public
Tricia L. Robello, L.S. #1246
Deputy County Surveyor
Sedgwick County, Kansas

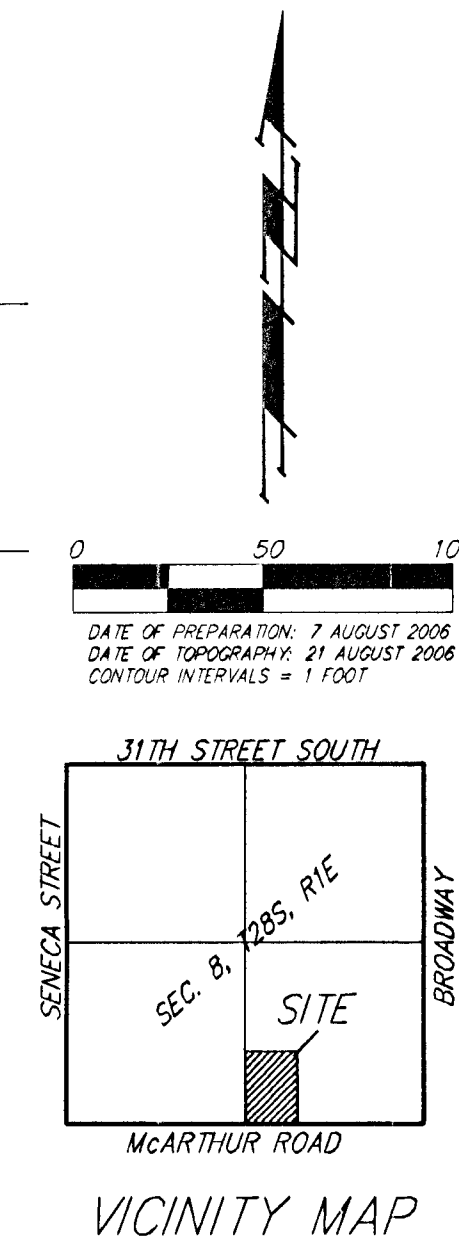
My App't. Exp. _____

Entered on transfer record this _____ day
of _____, 2006.

_____, County Clerk
Don Brace

State of Kansas) SS This is to certify that this plat has been
Sedgwick County) filed for record in the office of the Register of Deeds, this _____ day
of _____, 2006 at _____ o'clock _____ M., and is duly recorded.

_____, Register of Deeds
Bill Meek
_____, Deputy
Tonya Buckingham



- OWNER:**
PRICE TRANSPORTATION, LLC
ATTN: ED TOON
1402 W. MADISON
WICHITA, KS 67213
- DATE OF PREPARATION:** 7 AUGUST 2006
DATE OF TOPOGRAPHY: 21 AUGUST 2006
CONTOUR INTERVALS: = 1 FOOT
- GM = Gas Meter
 - Guy = Guy Anchor
 - GV = Gas Valve
 - HLP = High Line Pole
 - LP = Light Pole
 - MW = Monitoring Well
 - SBC = SBC Pedestal
 - SWB = Southwestern Bell Pipeline Marker
 - PP = Power Pole
 - SSMH = Sanitary Sewer Manhole
 - WM = Water Meter
 - WV = Water Valve
 - PH = Fire Hydrant
 - PC = Pine Tree
 - = Tree

BENCHMARK:
COW BENCHMARK AT THE NW CORNER OF INTERSECTION
OF GOLD ST. AND MCARTHUR ST.
ELEV. = 1277.20 NGVD29

- = #4 Baughman Rebar Set
- = #6 Rebar Found
- = Right of Way Marker
- △ = 1/4" Iron Pipe in Thimble Found
- = 1/2" Iron Pipe in Thimble Found

(C) = Calculated
(D) = Described
(M) = Measured
(P) = Platted
(H) = Chard

7 AUGUST 2006

Baughman Company, P.A.
315 Ellis St. Wichita, KS 67211 P 316-262-7271 F 316-262-0149
ENGINEERING | SURVEYING | PLANNING | LANDSCAPE ARCHITECTURE

E:\PLAT\PRICE TRANSPORTATION ADDITION\DWG\PRICE_P1_06A.DWG