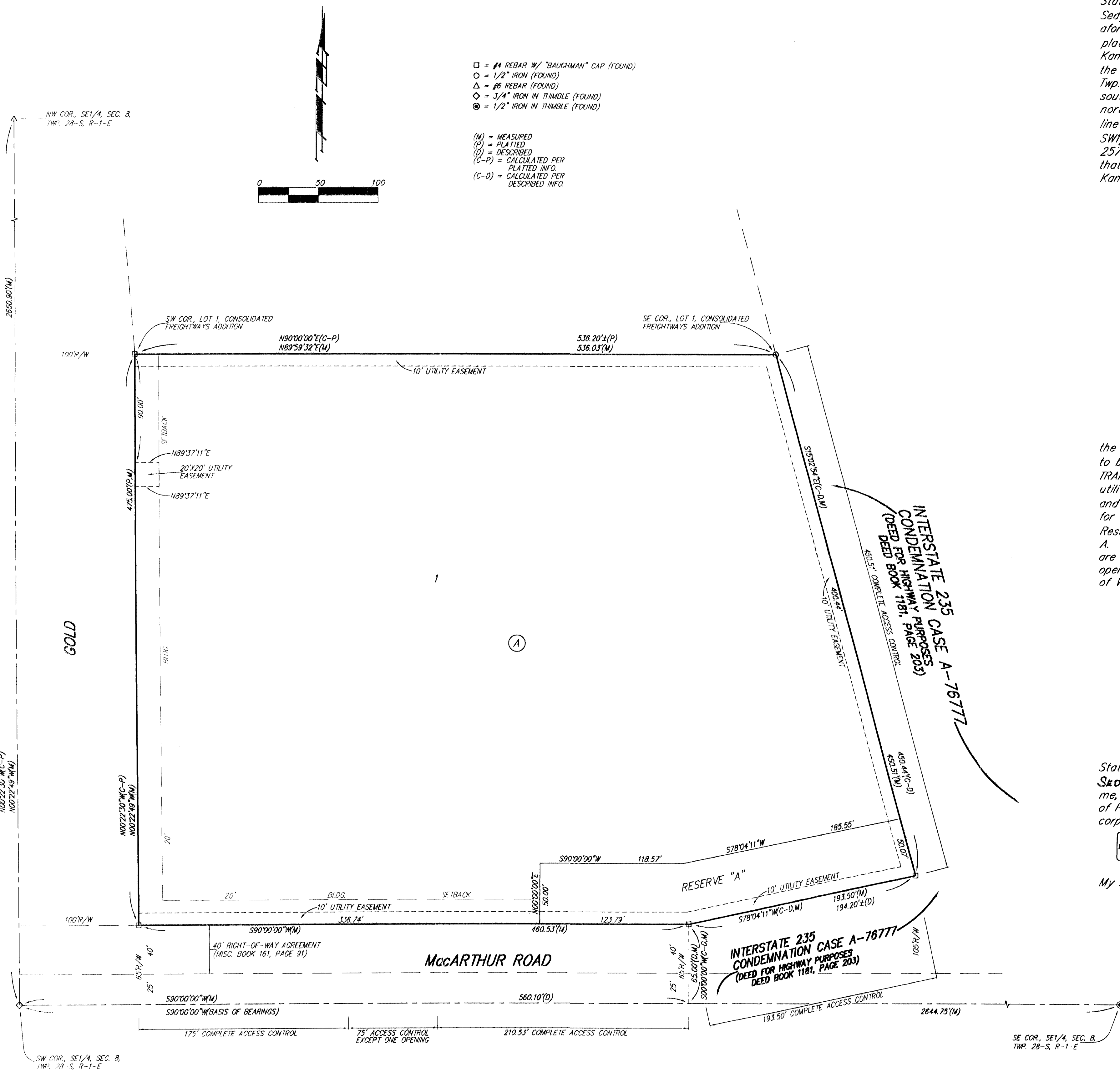


# PRICE TRANSPORTATION ADDITION WICHITA, SEDGWICK COUNTY, KANSAS

12/21/06



State of Kansas) SS We, Baughman Company, P.A., Surveyors in Sedgwick County do hereby certify that we have surveyed and platted "PRICE TRANSPORTATION ADDITION", Wichita, Sedgwick County, Kansas and that the accompanying plat is a true and correct exhibit of the property surveyed, described as that part of the SE 1/4 of Sec. 8, Twp. 28-S, R-1-E of the 6th P.M., Sedgwick County, Kansas lying southwesterly of Interstate 235 right-of-way, EXCEPT that part lying north of the following described line: Beginning at a point on the west line of said SE 1/4, 185.36 feet south of the northwest corner of the SW 1/4 of said SE 1/4; thence east at right angles to said west line, 257.5 feet, more or less, to said Interstate right-of-way, and EXCEPT that part platted as Lot 1, Consolidated Freightways Addition to Wichita, Kansas, all being subject to road rights-of-way of record. Existing public easements and dedications being vacated by virtue of K.S.A. 12-512(b).  
Baughman Company, P.A.

Michael A. Conrey, Surveyor  
Michael G. Conrey  
12-8-2006  
Notary Public Seal

This plat of "PRICE TRANSPORTATION ADDITION", Wichita, Sedgwick County, Kansas has been submitted to and approved by the Wichita-Sedgwick County Metropolitan Area Planning Commission, Wichita, Kansas. Dated this \_\_\_\_\_ day of \_\_\_\_\_, 2006. Wichita-Sedgwick County Metropolitan Area Planning Commission

\_\_\_\_\_, Chair  
Harold L. Warner, Jr.  
\_\_\_\_\_, Secretary  
John L. Schlegel

This plat approved and all dedications shown hereon accepted by the City Council of the City of Wichita, Kansas, this \_\_\_\_\_ day of \_\_\_\_\_, \_\_\_\_\_.

\_\_\_\_\_, Mayor  
Carlos Mayans  
\_\_\_\_\_, City Clerk  
Karen Sublett

Know all men by these presents that we, the undersigned owners, have caused the land in the surveyors certificate to be platted into a Lot, a Block, and a Reserve to be known as "PRICE TRANSPORTATION ADDITION", Wichita, Sedgwick County, Kansas. The utility easements are hereby granted as indicated for the construction and maintenance of all public utilities. Reserve "A" is hereby reserved for open space, drainage purposes, and utilities as confined to easement. Reserve "A" shall be owned and maintained by the owner of Lot 1, Block A. Access controls shall be as depicted on the face of the plat and are hereby granted to the City of Wichita, Kansas. The permitted opening locations shall be as determined by the City Engineer of the City of Wichita, Kansas.  
Price Transportation, Inc., a Kansas corporation

Edward J. Toon, President  
Edward J. Toon

Reviewed in accordance with K.S.A. 58-2005 on this \_\_\_\_\_ day of \_\_\_\_\_, \_\_\_\_\_.

Tricia L. Robello, L.S. #1246  
Deputy County Surveyor  
Sedgwick County, Kansas

State of Kansas) SS The foregoing instrument acknowledged before me, this 20th day of DECEMBER, 2006, by Edward J. Toon, President of Price Transportation, Inc., a Kansas corporation, on behalf of the corporation.  
JUDITH M. TERHUNE, Notary Public  
My App't. Exp. 11-7-09

Entered on transfer record this \_\_\_\_\_ day of \_\_\_\_\_, \_\_\_\_\_.  
\_\_\_\_\_, County Clerk  
Don Brace

State of Kansas) SS This is to certify that this plat has been filed for record in the office of the Register of Deeds, this \_\_\_\_\_ day of \_\_\_\_\_, \_\_\_\_\_ at \_\_\_\_\_ o'clock \_\_\_\_\_ M., and is duly recorded.

\_\_\_\_\_, Register of Deeds  
Bill Meek  
\_\_\_\_\_, Deputy  
Tonya Buckingham

NOTE: A DRAINAGE PLAN HAS BEEN DEVELOPED FOR THIS SUBDIVISION AND IS ON FILE WITH THE CITY OF WICHITA, KANSAS. DRAINAGE INTENT SHALL REMAIN AS DEPICTED OR AS MODIFIED WITH THE APPROVAL OF THE CITY ENGINEER OF THE CITY OF WICHITA, KANSAS. NO OBSTRUCTIONS WHICH IMPEDE THE FLOW OF THIS DRAINAGE PLAN SHALL BE ALLOWED.