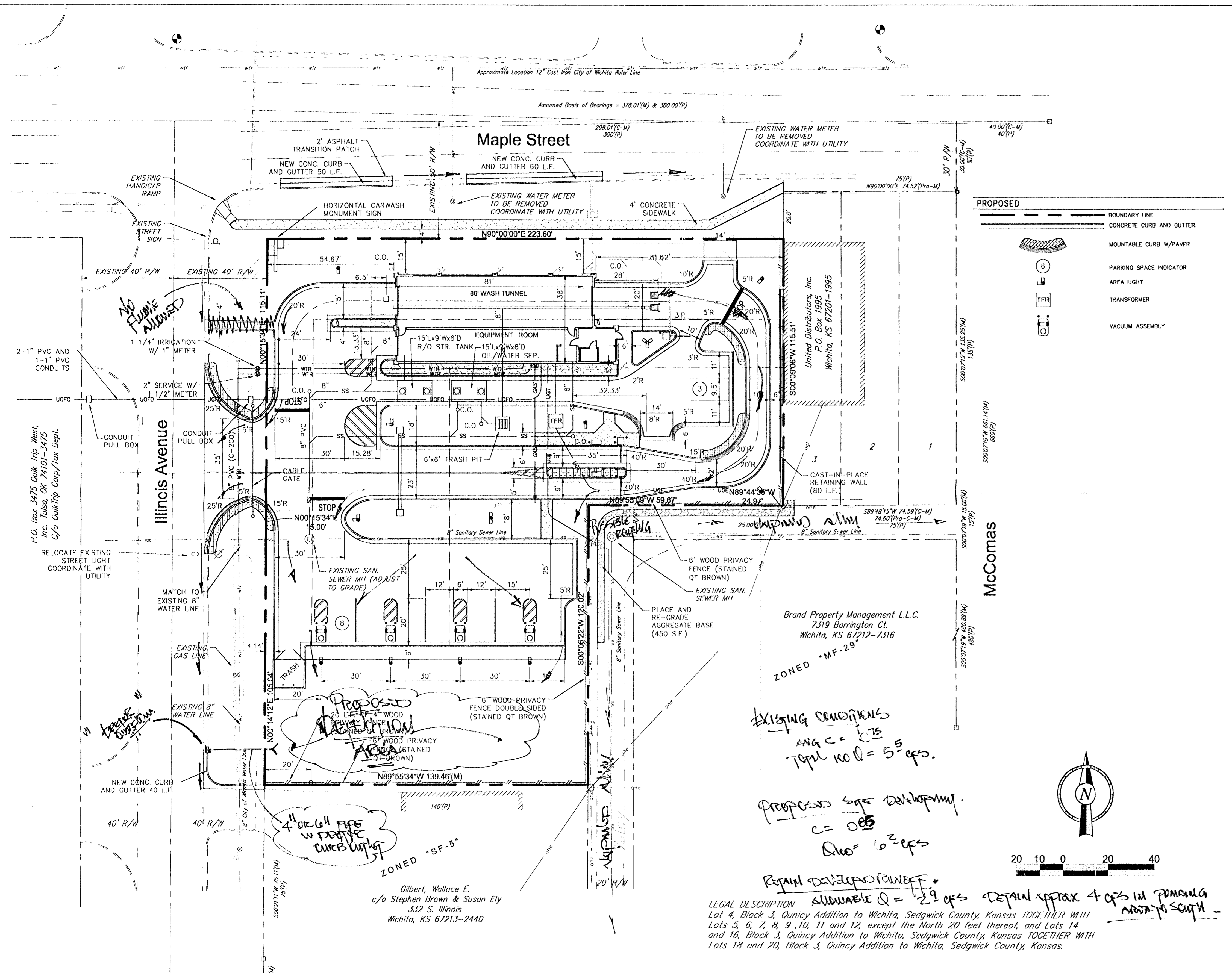


K:\Projects\03\03 Wichita\03596\03596CW\396CW\_396CW.dwg - Site (Pre-Plan) - May 15, 2006 - 5:02pm



**GENERAL NOTES**

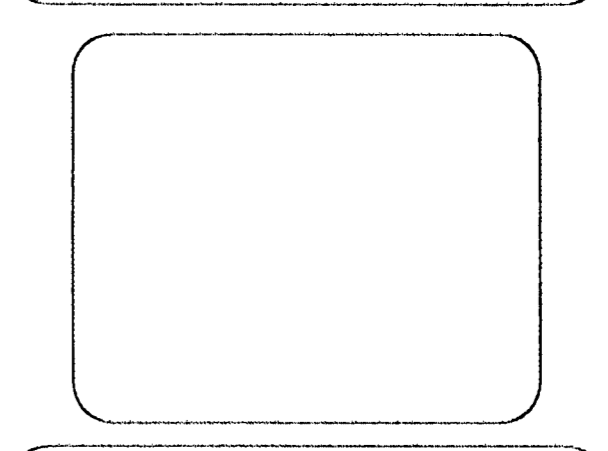
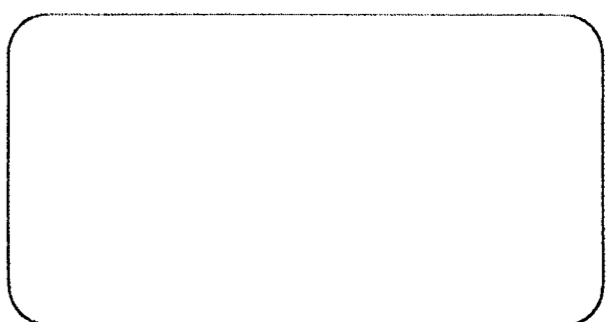
1. ALL SANITARY SEWER PIPING IS SDR-35 PVC. THE EXACT SIZE IS NOTED ON EACH RUN ON THE SITE PLAN.

- 6 MOUNTABLE CURB W/PAVER
- 6 PARKING SPACE INDICATOR
- 6 AREA LIGHT
- 6 TRANSFORMER
- 6 VACUUM ASSEMBLY

No.	Revision	Date

© COPYRIGHT  
1988 QUIKTRIP CORPORATION  
DESIGN PATENTS  
QUIKTRIP PLANS ARE THE EXCLUSIVE PROPERTY OF QUIKTRIP CORPORATION, TULSA, OKLAHOMA. THESE PLANS ARE PROTECTED BY THEIR EXISTING DOMESTIC AND INTERNATIONAL COPYRIGHT AND PATENT STATUTES AND UNAUTHORIZED USE, REPRODUCTION, PUBLICATION, DISTRIBUTION OR SALE IN WHOLE OR IN PART, IS STRICTLY FORBIDDEN.

No.	Revision	Date



**PRELIMINARY SITE PLAN**

DRAWN BY: KGV	SHEET 2
DESIGNED BY: KGV	of 4
CHECKED BY: CDP	
ISSUE DATE: 5/15/2006	

Revised plan 6/10/06 NEW

WICHITA, KS

ILLINOIS AVENUE AND MAPLE STREET

QuikTrip Store No. : 396CW

**LEGAL DESCRIPTION** SUBDIVISION Q = 29 qcs DETAIL APPROX 4 qcs IN REMAINING AREA TO SOUTH

Lot 4, Block 3, Quincy Addition to Wichita, Sedgewick County, Kansas TOGETHER WITH Lots 5, 6, 7, 8, 9, 10, 11 and 12, except the North 20 feet thereof, and Lots 14 and 16, Block 3, Quincy Addition to Wichita, Sedgewick County, Kansas TOGETHER WITH Lots 18 and 20, Block 3, Quincy Addition to Wichita, Sedgewick County, Kansas.

EXISTING CONDITIONS  
AVG C = 6.75  
TOTAL NO Q = 5<sup>5</sup> qcs.

PROPOSED SITE DEVELOPMENT  
C = 0.05  
Q = 6<sup>2</sup> qcs

REMAIN DEVELOPMENT

Gilbert, Wallace E.  
c/o Stephen Brown & Susan Ely  
332 S. Illinois  
Wichita, KS 67213-2440

Brand Property Management L.L.C.  
7319 Barrington Ct.  
Wichita, KS 67212-7316

ZONED "MF-29"

ZONED "SF-5"