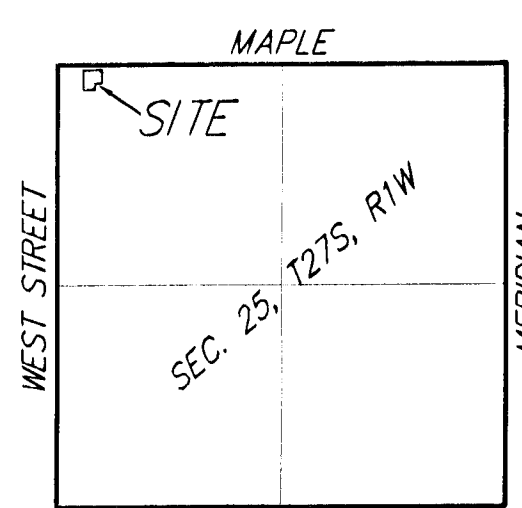
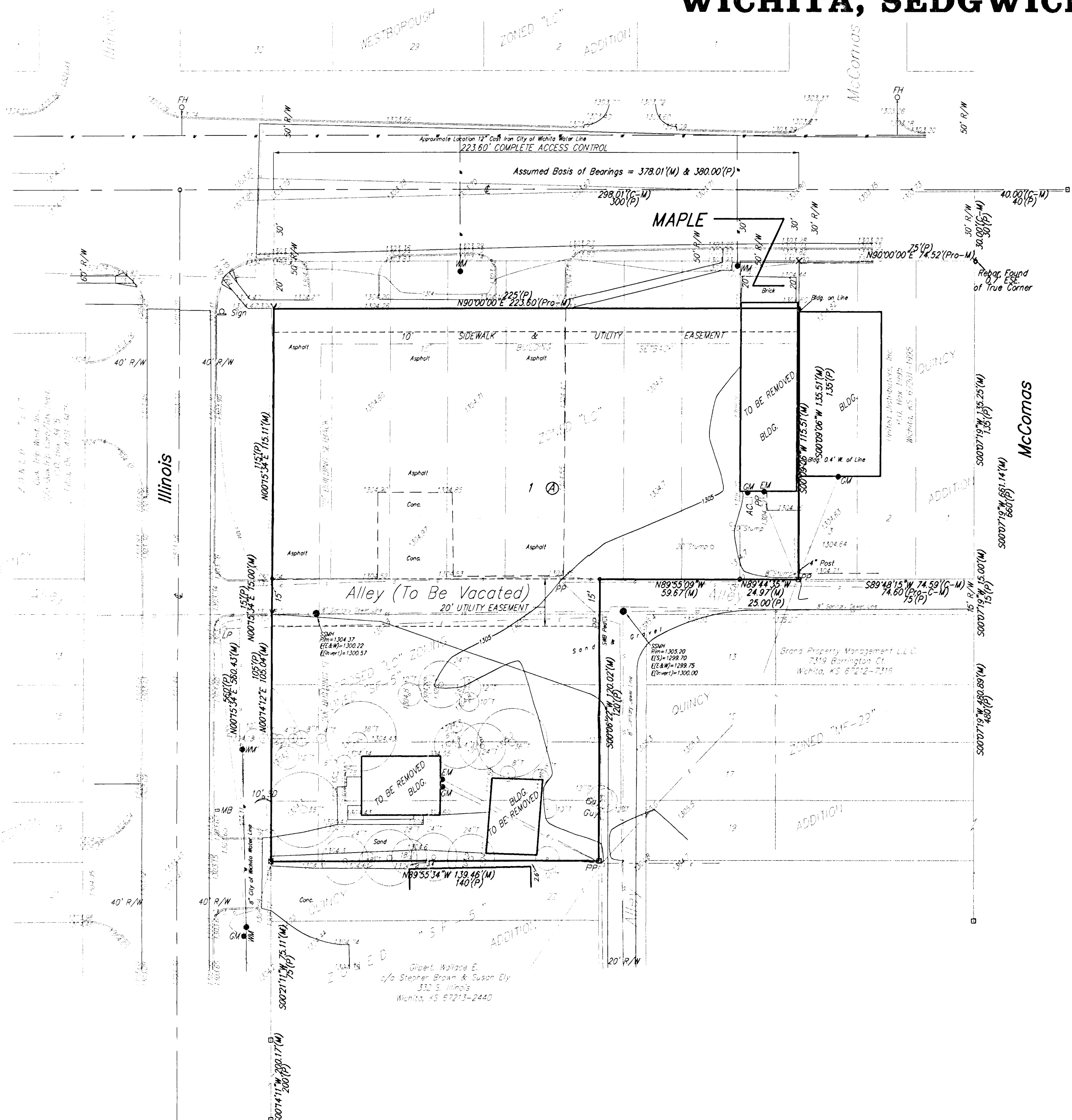


QUIKTRIP 9TH ADDITION WICHITA, SEDGWICK COUNTY, KANSAS

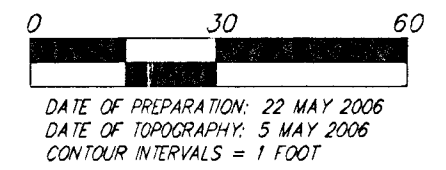


- MB = Mail Box
- T = Traffic Sign
- LP = Light Pole
- PP = Power Pole
- SSM = Sanitary Sewer Manhole
- T = Tree
- MA = Manhole
- CA = Cased Well
- GA = Guy Anchor
- HLP = High Line Pole
- MB = Mail Box
- RKPT = RKO #4 Marker

NOTE:
A master grading plan for drainage has been developed for this subdivision and is on file with the City of Wichita, Kansas. All drainage easements, right-of-ways, or reserves shall remain at established grades or as modified with the approval of the City Engineer of the City of Wichita, Kansas. No obstructions which impede the flow of this drainage system be allowed.

- = #4 REBAR W/ "BAUGHMAN" CAP (SET)
- = #4 REBAR W/ "BAUGHMAN" CAP (FOUND)
- ▲ = "HILT" NAIL IN ASPHALT OVER CENTER OF STONE (1.5" DEEP) W/ #4 REBAR ON WEST SIDE OF STONE (FOUND)
- ⊙ = #5 REBAR W/ "GARBER" CAP (FOUND)
- = THIMBLE (FOUND)
- = #4 REBAR (FOUND)

(M) = MEASURED
(P) = PLATTED
(C-P) = CALCULATED PER PLATTED INFO.



DATE OF PREPARATION: 22 MAY 2006
DATE OF TOPOGRAPHY: 5 MAY 2006
CONTOUR INTERVALS = 1 FOOT

OWNER:
QUIKTRIP CORPORATION
ATTN: SHERRY SUTERA
5725 FORDRIDGE DRIVE
MISSION, KANSAS 66202
913-905-2025

BENCHMARK:
SMALL RAILROAD SPIKE IN W. FACE OF POWER POLE, 0.8' S. & 0.7' W. OF THE MOST EASTERLY SE CORNER OF LOT 1, BLOCK A, QUIKTRIP 9TH ADDITION.
ELEV. = 1306.07 NGVD29

SQUARE OUT ON TOP OF CURB, W. SIDE OF ILLINOIS, 118' S. & 55' W. OF THE NW COR. OF LOT 1, BLOCK A, QUIKTRIP 9TH ADDITION.
ELEV. = 1303.77 NGVD29

State of Kansas)
Sedgwick County) We, Baughman Company, P.A., Surveyors in aforesaid county and state do hereby certify that we have surveyed and platted "QUIKTRIP 9TH ADDITION", Wichita, Sedgwick County, Kansas and that the accompanying plat is a true and correct exhibit of the property surveyed, described as and being a replat of Lot 4, Block 3, Quincy Addition to Wichita, Sedgwick County, Kansas, TOGETHER WITH Lots 5, 6, 7, 8, 9, 10, 11 and 12, except the North 20 feet thereof, and Lots 14 and 16, Block 3, Quincy Addition to Wichita, Sedgwick County, Kansas, TOGETHER WITH Lots 18 and 20, Block 3, Quincy Addition to Wichita, Sedgwick County, Kansas.
Existing public easements and dedications being vacated by virtue of K.S.A. 12-512(b).
Baughman Company, P.A.

_____, Surveyor
Michael G. Conrey

Know all men by these presents that we, the undersigned, have caused the land in the surveyors certificate to be platted into a Lot, a Block, and Streets to be known as "QUIKTRIP 9TH ADDITION", Wichita, Sedgwick County, Kansas. The utility easements are hereby granted as indicated for the construction and maintenance of all public utilities. The streets are hereby dedicated to and for the use of the public. Access controls shall be as depicted on the face of the plat and are hereby dedicated to and for the use of the public. The opening locations shall be determined by the City Engineer of the City of Wichita, Kansas.

QuikTrip West, Inc.
_____, Vice-President of Store Development
Jamie Marchesano

State of Kansas) SS The foregoing instrument acknowledged before me, this _____ day of _____, 2006, by Jamie Marchesano, Vice-President of Store Development of QuikTrip West, Inc., on behalf of the corporation.
_____, Notary Public
My App't. Exp. _____

This plat of "QUIKTRIP 9TH ADDITION", Wichita, Sedgwick County, Kansas has been submitted to and approved by the Wichita-Sedgwick County Metropolitan Area Planning Commission, Wichita, Kansas.
Dated this _____ day of _____, 2006.
Wichita-Sedgwick County Metropolitan Area Planning Commission

_____, Chair
Harold L. Warner, Jr.

_____, Secretary
John L. Schlegel

This plat approved and all dedications shown hereon accepted by the City Council of the City of Wichita, Kansas, this _____ day of _____, 2006.

_____, Mayor
Carlos Mayans

_____, City Clerk
Karen Sublett

Reviewed in accordance with K.S.A. 58-2005 on this _____ day of _____, 2006.

Tricia L. Robella, L.S. #1246
Deputy County Surveyor
Sedgwick County, Kansas

Entered on transfer record this _____ day of _____, 2006.

_____, County Clerk
Don Brace

State of Kansas) SS This is to certify that this plat has been filed for record in the office of the Register of Deeds, this _____ day of _____, 2006 at _____ o'clock _____ M; and is duly recorded.

_____, Register of Deeds
Bill Meek

_____, Deputy
Tonya Buckingham