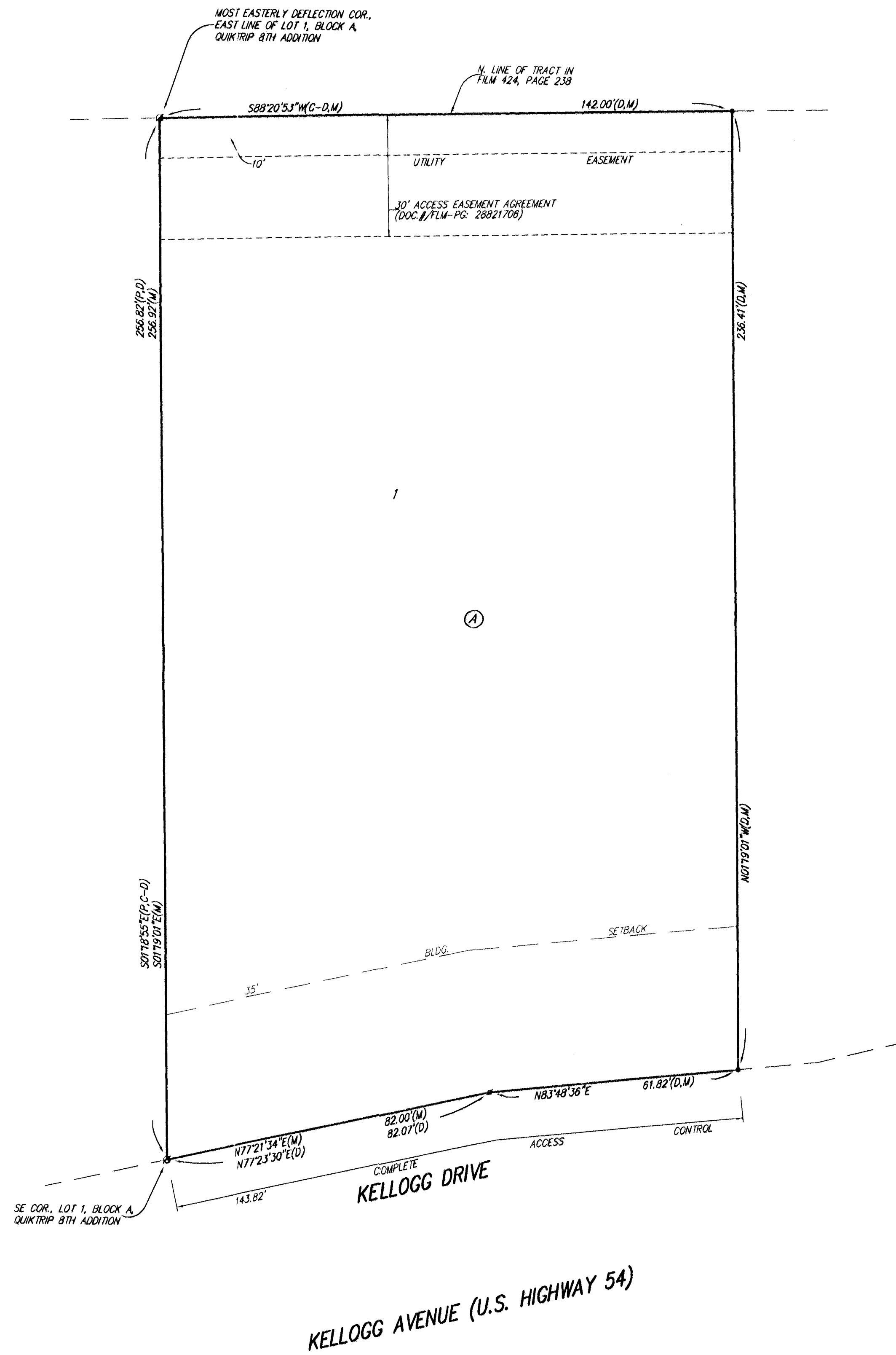


QUIKTRIP 10TH ADDITION

WICHITA, SEDGWICK COUNTY, KANSAS

FINAL TRACING REC'D

10/18/06



State of Kansas) SS We, Baughman Company, P.A., Surveyors in Sedgwick County) do hereby certify that we have surveyed and platted "QUIKTRIP 10TH ADDITION", Wichita, Sedgwick County, Kansas and that the accompanying plat is a true and correct exhibit of the property surveyed, described as a tract in the SW1/4 of Sec. 29, Twp 27-S, R-1-W of the 6th P.M. Sedgwick County, Kansas, further described as follows: Commencing at the SE corner of Lot 18, Verda Vista, Sedgwick County, Kansas; thence on an assumed bearing of N01°19'01"W, along the east line of said Verda Vista, a distance of 207.09 feet, more or less, to a point 24.99 feet north of the SE corner of Lot 16 in said Verda Vista, said point being a point on the south line of Lot 1, Block A, Quiktrip 8th Addition, Wichita Sedgwick County, Kansas; thence N77°23'30"E, 95.86 feet to the southeast corner of said Lot 1 and for a point of beginning; thence continuing N77°23'30"E, 82.07 feet; thence N83°48'36"E, 61.82 feet; thence N01°19'01"W, parallel with the west line of said SW1/4, 236.41 feet to a point on the north line of a tract described on the deed filed of record in the Sedgwick County, Register of Deeds Office on Film 424 at Page 238; thence westerly along the north line of said tract, 142.00 feet to the most easterly deflection corner in the east line of Lot 1, Block A, in said Quiktrip 8th Addition; thence southerly along the east line of said Lot 1, 256.82 feet to the point of beginning.

Existing public easements and dedications being vacated by virtue of K.S.A. 12-512(b).
 Baughman Company, P.A.

Michael G. Conroy, Surveyor
 Michael G. Conroy

This plat of "QUIKTRIP 10TH ADDITION", Wichita, Sedgwick County, Kansas has been submitted to and approved by the Wichita-Sedgwick County Metropolitan Area Planning Commission, Wichita, Kansas.
 Dated this _____ day of _____, 2006.
 Wichita-Sedgwick County Metropolitan Area Planning Commission

Harold L. Warner, Jr., Chair

John L. Schlegel, Secretary

This plat approved and all dedications shown hereon accepted by the City Council of the City of Wichita, Kansas, this _____ day of _____, 2006.

Carlos Mayans, Mayor

Karen Sublett, City Clerk

Reviewed in accordance with K.S.A. 58-2005 on this _____ day of _____, 2006.

Tricia L. Robello, L.S. #1246
 Deputy County Surveyor
 Sedgwick County, Kansas

Entered on transfer record this _____ day of _____, 2006.

Don Brace, County Clerk

Oklahoma State of Tulsa) SS The foregoing instrument acknowledged before me, this 13th day of October, 2006, by James D. Marchesano, Vice-President of Store Development for Quiktrip West, Incorporated, a Kansas corporation, on behalf of the corporation.

Kristy Elliott, Notary Public
 My App't. Exp. 3/18/2009

State of Kansas) SS This is to certify that this plat has been filed for record in the office of the Register of Deeds, this _____ day of _____, 2006 at _____ o'clock _____ M; and is duly recorded.

Bill Meek, Register of Deeds

Tonya Buckingham, Deputy

Baughman Company, P.A.
 315 Ella St. Wichita, KS 67211 P 316.262.1271 F 316.262.0149
 ENGINEERING | SURVEYING | PLANNING | LANDSCAPE ARCHITECTURE
 15 PLAT QUIKTRIP 10TH ADDITION DWG: QUIKTRIP10TH.DWG

NOTE: AN ACCESS EASEMENT FOR CROSS LOT CIRCULATION WILL BE ESTABLISHED BETWEEN THIS PLAT AND LOT 1, BLOCK A, QUIKTRIP 8TH ADDITION.

• = #4 REBAR W/ "BAUGHMAN CAP" (SET)
 ○ = #5 REBAR W/ "MKEC" CAP (FOUND)
 ■ = #4 REBAR W/ "BAUGHMAN CAP" (FOUND)

(M) = MEASURED
 (P) = PLATTED
 (D) = DESCRIBED
 (C-D) = CALCULATED PER DESCRIBED INFO.

NOTE: MUTUAL ACCESS EASEMENT, (FILM 2225, PAGE 471), AFFECTING ALL OF LOT 1, BLOCK A, QUIKTRIP 10TH ADDITION AND OTHER TRACTS. AMENDMENT TO MUTUAL ACCESS AGREEMENT, (DOC #/FILM-PG: 28812341), RELEASING AND TERMINATING CURB CUT ACCESS ESTABLISHED IN FILM 2225 AT PAGE 471.

NOTE: A DRAINAGE PLAN HAS BEEN DEVELOPED FOR THIS SUBDIVISION AND IS ON FILE WITH THE CITY OF WICHITA, KANSAS. DRAINAGE INVENT SHALL REMAIN AS DEPICTED OR AS MODIFIED WITH THE APPROVAL OF THE CITY ENGINEER OF THE CITY OF WICHITA, KANSAS. NO OBSTRUCTIONS WHICH IMPED THE FLOW OF THIS DRAINAGE PLAN SHALL BE ALLOWED.