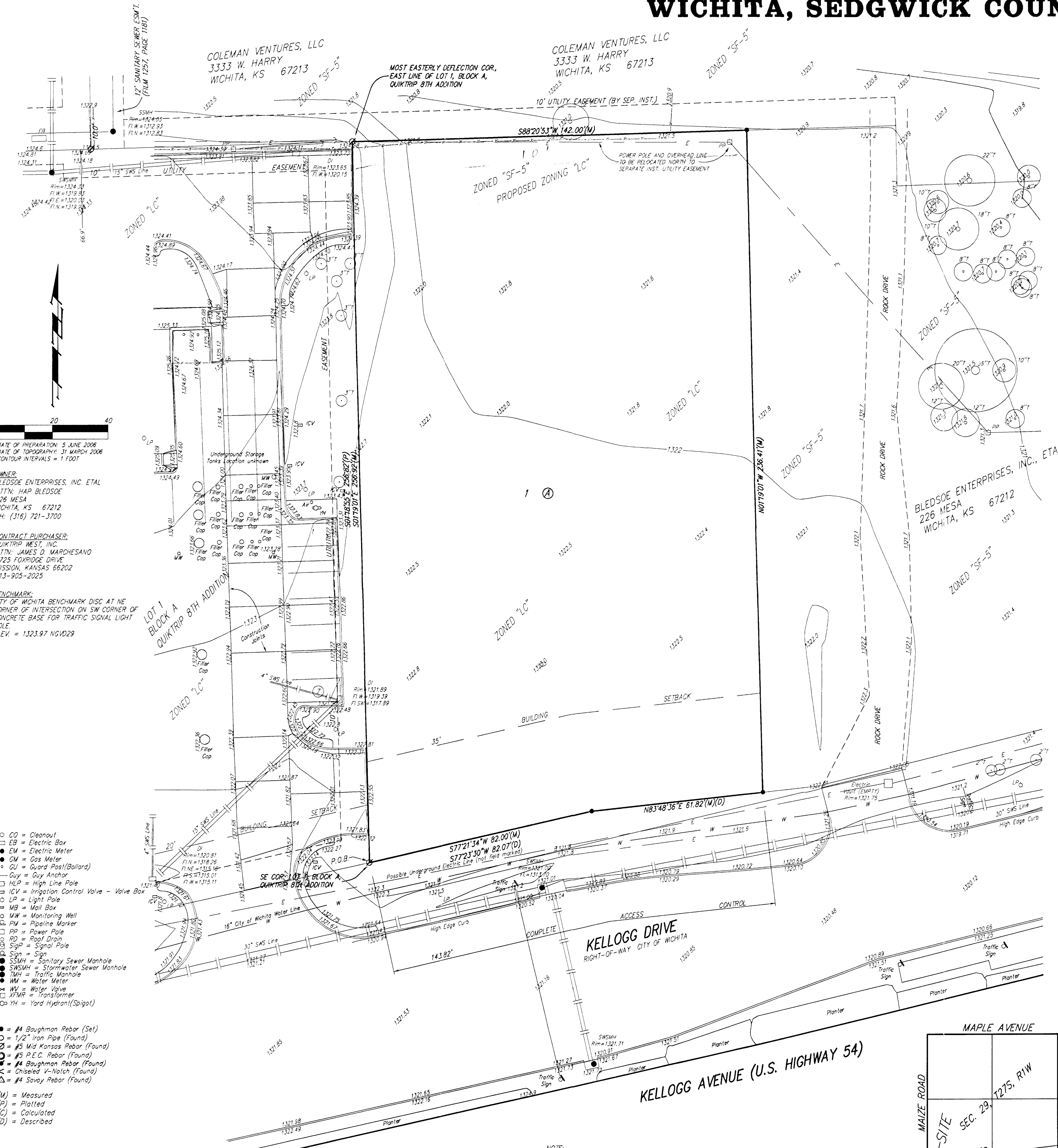


ONE-STEP FINAL PLAT
QUIKTRIP 10TH ADDITION
 WICHITA, SEDGWICK COUNTY, KANSAS



DATE OF PREPARATION: 5 JUNE 2006
 DATE OF TOPOGRAPHY: 31 MARCH 2006
 CONTOUR INTERVALS = 1 FOOT

OWNER:
 BLEDSOE ENTERPRISES, INC. ETAL
 ATTN: HAR BLEDSOE
 226 MESA
 WICHITA, KS 67212
 PH: (316) 721-3700

CONTRACT PURCHASER:
 QUIKTRIP WEST, INC.
 ATTN: JAMES D. MARCHESANO
 5725 FOYRIDGE DRIVE
 MISSION, KANSAS 66202
 913-905-2025

BENCHMARK:
 CITY OF WICHITA BENCHMARK DISC AT NE CORNER OF INTERSECTION ON SW CORNER OF CONCRETE BASE FOR TRAFFIC SIGNAL LIGHT POLE.
 ELEV. = 1323.97 NGVD29

- CO = Cleanout
 - EB = Electric Box
 - EM = Electric Meter
 - GM = Gas Meter
 - QJ = Guard Post(Ballard)
 - Guy = Guy Anchor
 - HLP = High Line Pole
 - ICV = Irrigation Control Valve - Valve Box
 - LP = Light Pole
 - MB = Mail Box
 - MW = Monitoring Well
 - PIP = Pipeline Marker
 - PP = Power Pole
 - RD = Roof Drain
 - Sign = Signal Pole
 - Sign = Sign
 - SSWH = Sanitary Sewer Manhole
 - SSWH = Stormwater Sewer Manhole
 - TM = Traffic Manhole
 - WM = Water Meter
 - WJ = Water Valve
 - WTR = Transformer
 - YH = Yard Hydrant(Spigot)
- #4 Baughman Rebar (Set)
 ○ 1/2" Iron Pipe (Found)
 ○ #3 Mid Kansas Rebar (Found)
 ○ #5 P.C.C. Rebar (Found)
 ● #4 Baughman Rebar (Found)
 < Chiseled V-Notch (Found)
 △ #4 Spavy Rebar (Found)
- (M) = Measured
 (P) = Platted
 (C) = Calculated
 (D) = Described

State of Kansas) Sedgwick County)
 We, Baughman Company, P.A., Surveyors in aforesaid county and state do hereby certify that we have surveyed and platted "QUIKTRIP 10TH ADDITION", Wichita, Sedgwick County, Kansas and that the accompanying plat is a true and correct exhibit of the property surveyed, described as a tract in the SW 1/4 of Sec. 29, Twp 27-S, R-1-W of the 6th P.M. Sedgwick County, Kansas, described as commencing at the southeast corner of Lot 18, Verda Vista, Sedgwick County, Kansas; thence on an assumed bearing of N01°18'15"W, along the east line of said Verda Vista, a distance of 207.09 feet, more or less, to a point 24.99 feet north of the southeast corner of Lot 16, in said Verda Vista, said point being a point on the south line of Lot 1, Block A, Quiktrip 8th Addition, Wichita Sedgwick County, Kansas; thence N77°23'30"E, 95.86 feet to the southeast corner of said Lot 1 and for a point of beginning; thence continuing N77°23'30"E, 82.07 feet; thence N83°48'36"E, 61.82 feet; thence N01°19'01"W, parallel with the west line of said SW1/4, 236.41 feet to a point on the north line of a tract described on the deed filed of record in the Sedgwick County, Register of Deeds Office on Film 424 at Page 238; thence westerly along the north line of said tract, 142.00 feet to the most easterly deflection corner in the east line of Lot 1, Block A, in said Quik Trip 8th Addition; thence southerly along the east line of said Lot 1, 256.82 feet to the point of beginning.

Existing public easements and dedications being vacated by virtue of K.S.A. 12-512(b).
 Baughman Company, P.A.

Michael G. Conrey, Surveyor

Know all men by these presents that we, the undersigned, have caused the land in the surveyors certificate to be platted into a Lot, a Block, and Streets to be known as "QUIKTRIP 10TH ADDITION", Wichita, Sedgwick County, Kansas. Access controls shall be as depicted on the face of the plat and are hereby dedicated to the City of Wichita, Kansas.

QuikTrip West, Inc.

James D. Marchesano, Vice-President of Store Development

State of Kansas) SS The foregoing instrument acknowledged before me, this day of 2006, by Jamie Marchesano, Vice-President of Store Development for QuikTrip West, Inc., on behalf of the corporation.

Notary Public

My App't. Exp. _____

Gas Line
 Electric Line
 Sanitary Sewer Line
 Telephone Line
 Water Line
 Fence Line

This plat of "QUIKTRIP 10TH ADDITION", Wichita, Sedgwick County, Kansas has been submitted to and approved by the Wichita-Sedgwick County Metropolitan Area Planning Commission, Wichita, Kansas.
 Dated this day of 2006.
 Wichita-Sedgwick County Metropolitan Area Planning Commission

Harold L. Warner, Jr., Chair
 John L. Schlegel, Secretary
 Carlos Mayans, Mayor
 Karen Sublett, City Clerk

Reviewed in accordance with K.S.A. 58-2005 on this day of 2006.

Tricia L. Robello, L.S. #1246
 Deputy County Surveyor
 Sedgwick County, Kansas

Entered on transfer record this day of 2006.
 Don Brace, County Clerk

State of Kansas) SS This is to certify that this plat has been filed for record in the office of the Register of Deeds, this day of 2006 at o'clock M; and is duly recorded.

Bill Meek, Register of Deeds
 Tonya Buckingham, Deputy