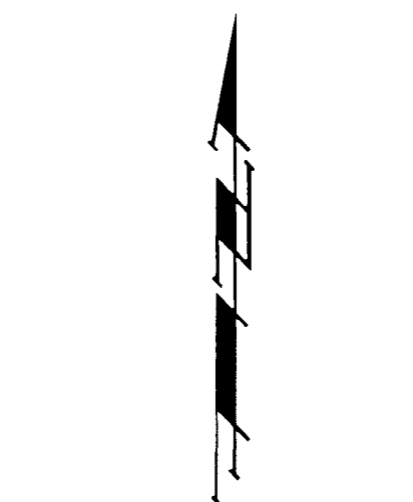
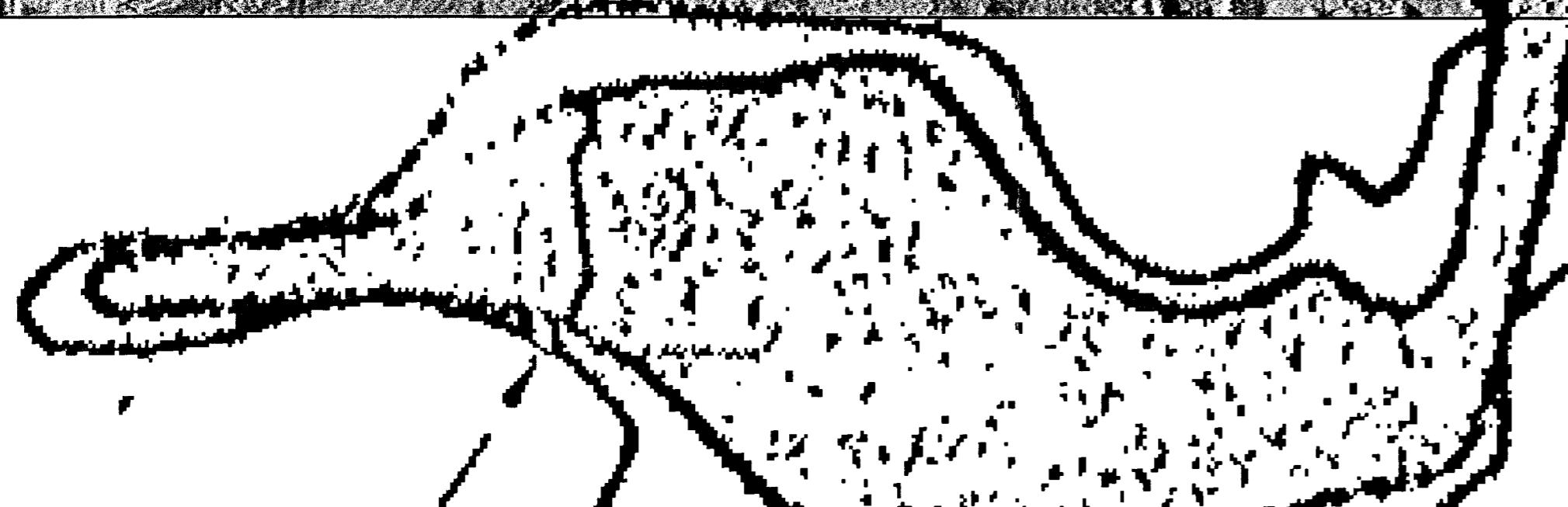
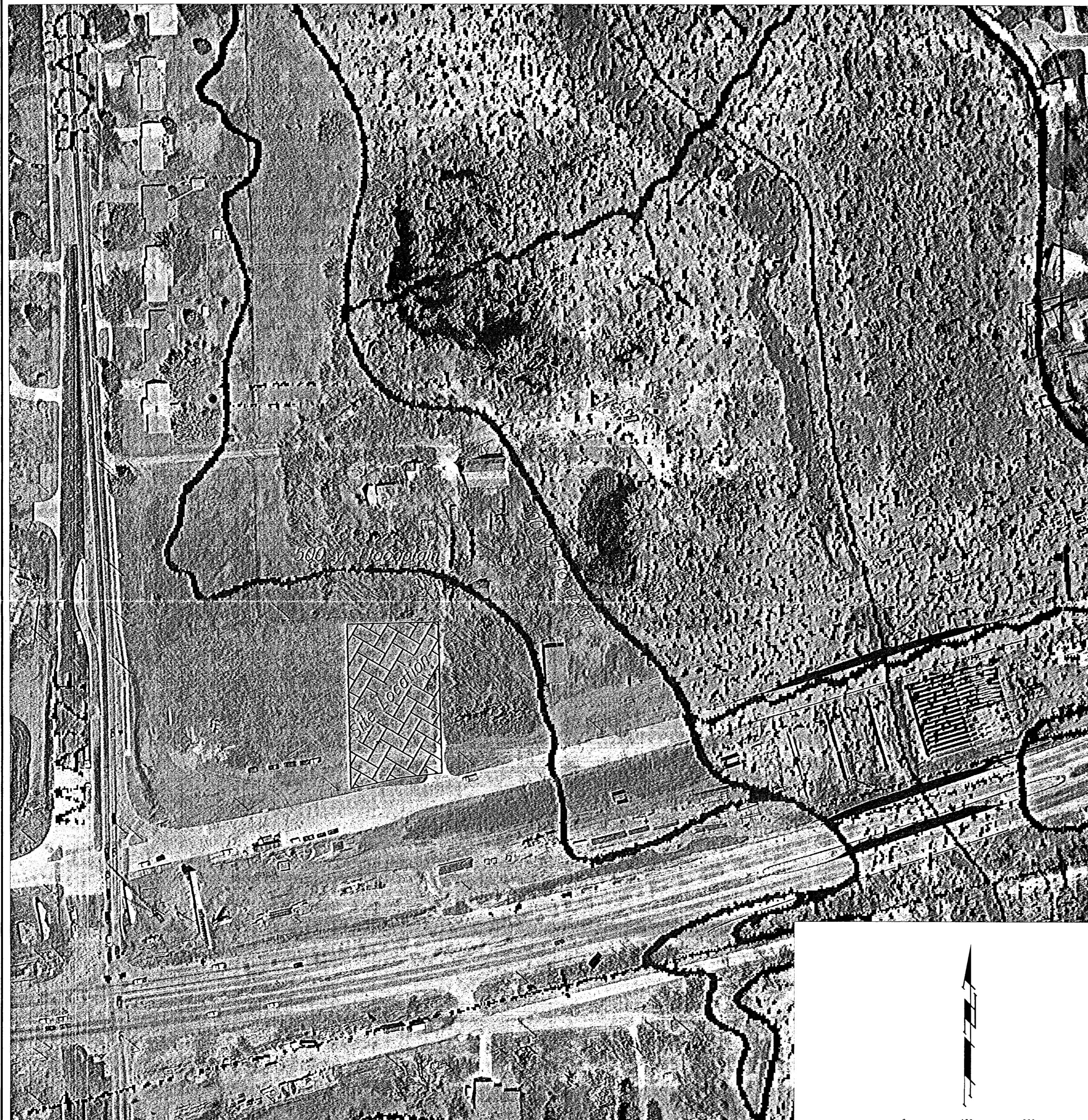


FEMA FIRM EXHIBIT

QUIKTRIP 10TH ADDITION

WICHITA, SEDGWICK COUNTY, KANSAS



DATE OF PREPARATION: 19 JUNE 2006
DATE OF TOPOGRAPHY: 31 MARCH 2006
CONTOUR INTERVALS = 1 FOOT

FEMA FIRM PANEL 20 of 40
WICHITA, KANSAS
REVISED TO REFLECT LOMR DATED
JUN 26, 1997.

19 JUNE 2006

B Baughman Company, P.A.
315 Elm St. Wichita, KS 67211 P 316-262-7271 F 316-262-0149
Baughman ENGINEERING | SURVEYING | PLANNING | LANDSCAPE ARCHITECTURE
F:\PLAT\QUIKTRIP 10TH\DWG\QUIKTRIP10THP.DWG\MCC