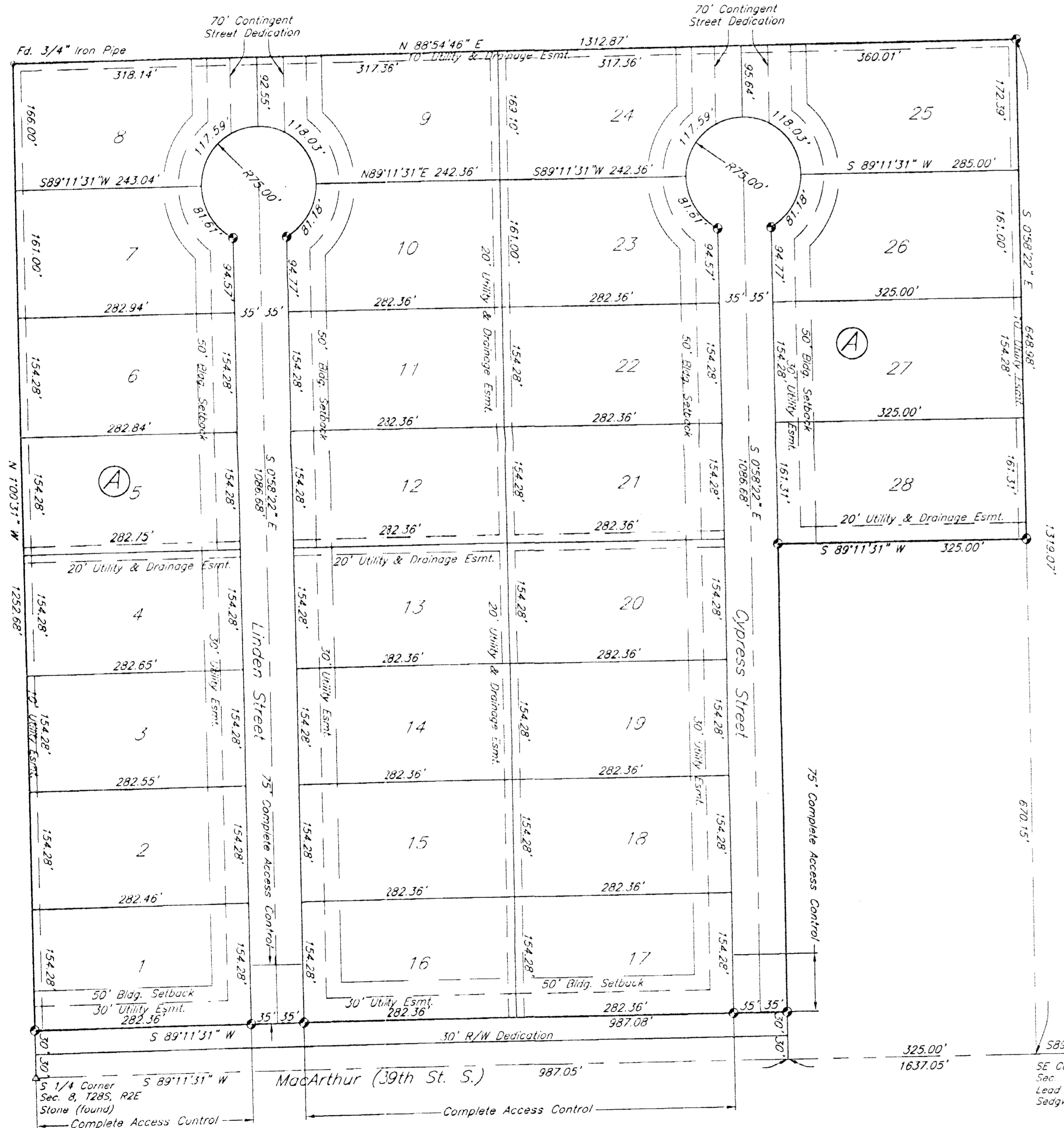


17-14-05

# PRAIRIE BREEZE ESTATES SEDGWICK COUNTY, KANSAS

Part of the Southeast 1/4, Section 8, Township 28 South, Range 2 East of the 6th. P.M.



State of Kansas )  
County of Sedgwick ) ss

I, Bradley C. Ward, a licensed land surveyor of the State of Kansas, do hereby certify that the following described tract of land was surveyed on the 15th day of June, 2005 and the accompanying final plat prepared and that all the monuments shown herein actually exist and their positions are correctly shown to the best of my knowledge and belief.

### LEGAL DESCRIPTION

A tract of land located in the Southeast quarter of Section 8, Township 28 South, Range 2 East, of the 6th Principal Meridian, Sedgwick County, Kansas, being more particularly described as:

The Southwest Quarter of the Southeast Quarter of Section 8, Township 28 South, Range 2 East, of the Sixth Principal Meridian, Sedgwick County, Kansas, EXCEPT the south 670.15 feet of the east 325' feet thereof.

Bradley C. Ward, L.S. 2005  
 State of Kansas )  
 County of Sedgwick ) ss  
 Date 7-11-05

State of Kansas )  
County of Sedgwick ) ss

Know all men by these presents, that we, the undersigned, have caused the land described in the surveyor's certificate to be platted into Lots, Blocks and Streets to be known as Prairie Breeze Estates. Any easements are hereby granted as indicated for constructing, maintaining, operating, and repairing public utilities. The contingent street dedications are hereby contingently dedicated as street right-of-way to become effective upon the platting of any adjacent subdivision having a street connecting thereto. The costs of constructing said street are to be borne by the person(s) or agency that owns said adjacent subdivision. A Drainage Plan for this addition has been established, and can be obtained from the City of Wichita. Development of any lot will need to conform to this Drainage Plan. The land contained herein is held and shall be conveyed subject to any restrictions, reservations, and covenants on file or hereafter filed in the office of the Register of Deeds of Sedgwick County, Kansas.

Access Control is hereby granted as follows:

1. There shall be complete access control to and from MacArthur across Lots 1, 16 and 17 Block A.
2. There shall be complete access control on the East and West sides of Linden Street and Cypress Street for 75' north of the intersections of MacArthur.

By: Philip F. Uhlir, owner Date

By: Sharon L. Uhlir, owner Date

State of Kansas )  
County of Sedgwick ) ss

This instrument was acknowledged before me on this day of 2005, by Philip F. Uhlir and Sharon L. Uhlir, owners.

Notary Public

My Commission Expires:

We, Rose Hill Bank, holders of a mortgage on the above described property do hereby consent to the plat of Prairie Breeze Estates, Sedgwick County, Kansas.

By: Date

State of Kansas )  
County of Sedgwick ) ss

The foregoing instrument was acknowledged before me this day of 2005.

Notary Public

My appointment expires:

State of Kansas )  
City of Wichita ) ss

This plat of Prairie Breeze Estates, Sedgwick County, Kansas, has been submitted to and approved by the Wichita-Sedgwick County Metropolitan Area Planning Commission, Wichita, Kansas. Dated this day of 2005.

Morris K. Dunlap, Chair

Jahn I. Schiagel, Secretary

State of Kansas )  
County of Sedgwick ) ss

This plat of Prairie Breeze Estates, Sedgwick County, Kansas has been submitted to and approved by the Board of County Commissioners of Sedgwick County, Kansas, On this day of 2005.

Dave Uhrich, Chairman

State of Kansas )  
City of Wichita ) ss

This plat approved and all dedications shown hereon accepted by the City Council of the City of Wichita, Kansas, this day of 2005.

At the Direction of the City Council

Carlos Mayans, Mayor

Karen Sublett, City Clerk

Entered on transfer record this day of 2005.

Don Brace, County Clerk

State of Kansas )  
County of Sedgwick ) ss

This is to certify that this instrument was filed for record in the Register of Deeds Office, at on the day of 2005, and is duly recorded.

Bill Meek, Register of Deeds

Tonya Buckingham, Deputy

Reviewed with K.S.A. 58-2005 on this 12th day of 2005

Tricia L. ... Deputy County Clerk

Filename: 05067\Final Plat.dwg prepared 6-30-05

