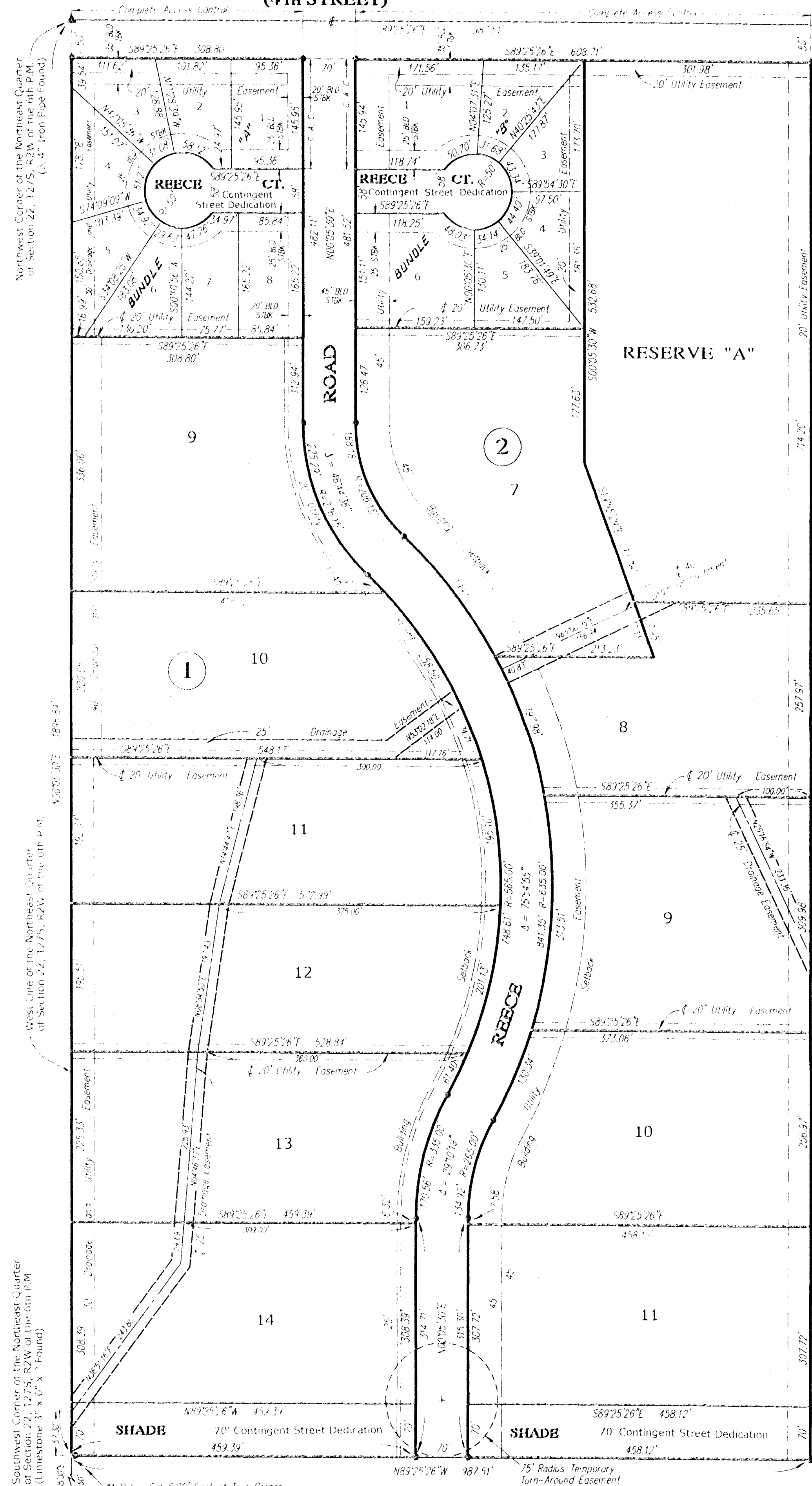


**CENTRAL AVENUE  
(4th STREET)**

Northeast Corner of  
Section 22, T27S, R2W of  
the 6th P.M.  
(#5 Rebar Found)

**FINAL PLAT OF  
"PRAIRIE CROSSING SECOND ADDITION"  
AN ADDITION TO SEDGWICK COUNTY, KANSAS  
IN THE NORTHEAST QUARTER OF SECTION 22,  
TOWNSHIP 27 SOUTH, RANGE 2 WEST OF THE 6TH P.M.**



State of Kansas )  
Sedgwick County ) ss

Terra Tech Land Surveying, Inc., a corporation registered and authorized to practice Land Surveying in the State of Kansas, hereby certifies that it has surveyed and platted "PRAIRIE CROSSING SECOND ADDITION", to Sedgwick County, Kansas, being a replat of "PRAIRIE CROSSING", an Addition to Sedgwick County, Kansas, and the accompanying plat is a true and correct exhibit of such re-survey of land formerly described as:

The North 1896.77 feet of the West 987.47 feet of the Northeast Quarter of Section 22, Township 27 South, Range 2 West of the Sixth Principal Meridian, Sedgwick County, Kansas.

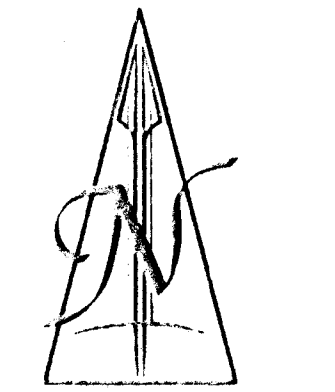
**TERRA TECH LAND SURVEYING, INC.**

Michele Webster LS #958 Date



Reviewed in accordance with K.S.A. 58-2005 on this \_\_\_\_\_ day of \_\_\_\_\_, 2005.

Tricia L. Robello, LS#1246  
Deputy County Surveyor  
Sedgwick County, Kansas



SCALE 1" = 100'

- ▲ Section Corner Found as noted
  - #4 Rebar Set with I.D. Cap "TERRA TECH"
  - C.A.C. Complete Access Control
- Bearing Basis Assumed

**TERRA TECH**  
LAND SURVEYING, INC.

22200 W. 63rd St. S.  
Wichita, Kansas 67149  
(316) 794-2083 / 794-3275  
Fax (316) 794-3274

This plat of "PRAIRIE CROSSING SECOND ADDITION", to Sedgwick County, Kansas, has been submitted to and approved by the Wichita-Sedgwick County Metropolitan Area Planning Commission, Wichita, Kansas.

Dated this \_\_\_\_\_ day of \_\_\_\_\_, 2005.

**WICHITA SEDGWICK COUNTY  
METROPOLITAN AREA PLANNING COMMISSION**

\_\_\_\_\_, Chairman  
Morris K. Dunlap

\_\_\_\_\_, Secretary  
John L. Schlegel

This plat approved and all dedications shown hereon are accepted by the City Council of the City of Wichita, Kansas, this \_\_\_\_\_ day of \_\_\_\_\_, 2005.

**AT THE DIRECTION OF THE WICHITA CITY COUNCIL**

\_\_\_\_\_, Mayor  
Carlos Mayans

\_\_\_\_\_, City Clerk  
Karen Sublett

State of Kansas )  
County of Sedgwick ) ss

The dedications shown on the plat, if any, are hereby accepted by the Board of County Commissioners, Sedgwick County, Kansas, on \_\_\_\_\_, 2005.

(Seal)

\_\_\_\_\_, Commission Chairman  
Thomas G. Winters

Attest: \_\_\_\_\_, County Clerk  
Don Brace

(Seal)