

**CENTRAL AVENUE
(4th STREET)**

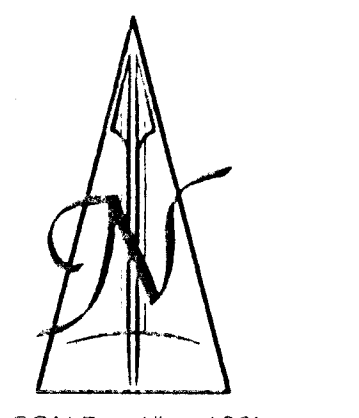
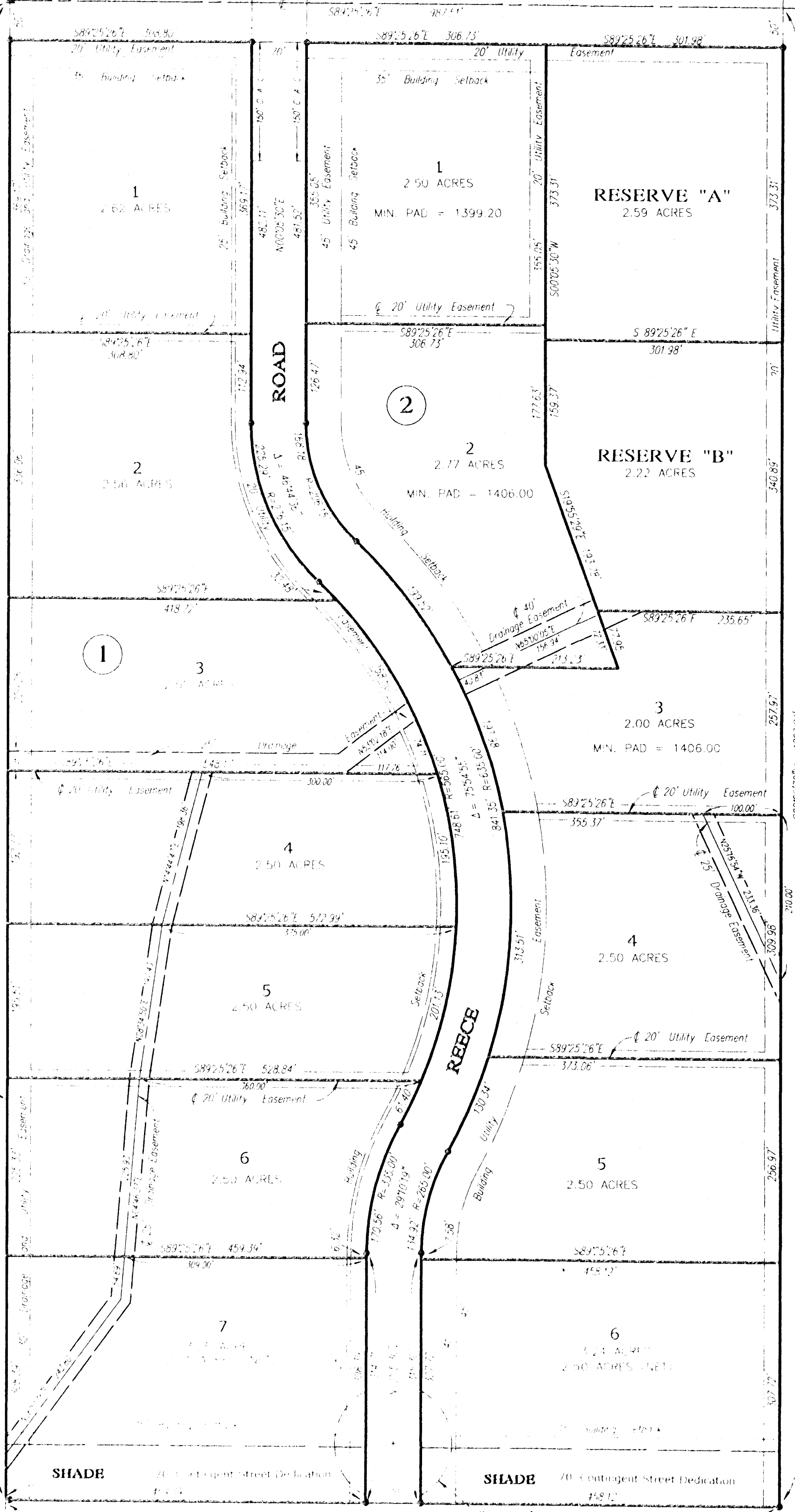
Northwest Corner of
Section 22, T27S, R2W of
the 6th P.M.
(#5 Rebar)

**FINAL PLAT OF
"PRAIRIE CROSSING SECOND ADDITION"
TO SEDGWICK COUNTY, KANSAS
IN THE NORTHEAST QUARTER OF SECTION 22,
TOWNSHIP 27 SOUTH, RANGE 2 WEST OF THE 6TH P.M.**

Northwest Corner of the Northeast Quarter
of Section 22, T27S, R2W of the 6th P.M.
(#5 Rebar)

West Line of the Northeast Quarter
of Section 22, T27S, R2W of the 6th P.M.

Southwest Corner of the Northeast Quarter
of Section 22, T27S, R2W of the 6th P.M.
(#5 Rebar)



▲ = Section Corner Found as noted
◆ = #4 Rebar Set with I.D. Cap
"TILSI CLS22"
C A C = Complete Access Control
Bearing Basis Assumed

BENCH MARK:
County Bench Mark, Railroad Spike
in High Line Pole 35' Northwest of
Northwest Corner of Section 22,
T27S, R2W of the 6th P.M.
Elevation: 1390.66 MSL

FLOOD ZONE:
Subject property is in Zone C, as shown on
Federal Emergency Management Agency
(FEMA) Flood Insurance Rate Map (FIRM) for
Sedgwick County, Kansas, Community Panel
Number 200321 0200 A, effective June 3, 1986.

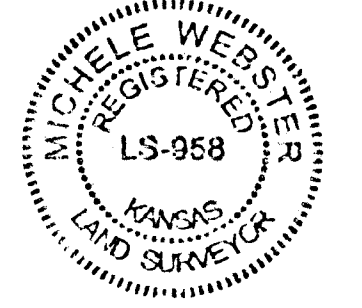
State of Kansas)
Sedgwick County) ss

Terra Tech Land Surveying, Inc., a corporation registered and authorized to practice Land Surveying in the State of Kansas, hereby certifies that it has surveyed and platted "PRAIRIE CROSSING SECOND ADDITION", to Sedgwick County, Kansas, being a replat of "PRAIRIE CROSSING", an Addition to Sedgwick County, Kansas, and the accompanying plat is a true and correct exhibit of such re-survey of land formerly described as:

The North 1896.77 feet of the West 987.47 feet of the Northeast Quarter of Section 22, Township 27 South, Range 2 West of the Sixth Principal Meridian, Sedgwick County, Kansas.

TERRA TECH LAND SURVEYING, INC.

Michele Webster LS #958 Date _____



Reviewed in accordance with K.S.A. 58-2005 on this _____ day of _____, 2005.

Tricia L. Robello, LS#1246
Deputy County Surveyor
Sedgwick County, Kansas

Entered on transfer record this _____ day of _____, 2005.

_____, County Clerk
Don Brace

State of Kansas)
Sedgwick County) ss

This is to certify that this instrument was filed for record in the Register of Deeds Office, at _____ o'clock _____ M., on the _____ day of _____, 2005.

_____, Register of Deeds
Bill Meek

_____, Deputy
Linda Kizzire

This plat of "PRAIRIE CROSSING SECOND ADDITION", to Sedgwick County, Kansas, has been submitted to and approved by the Wichita-Sedgwick County Metropolitan Area Planning Commission, Wichita, Kansas.

Dated this _____ day of _____, 2005.

**WICHITA-SEDGWICK COUNTY
METROPOLITAN AREA PLANNING COMMISSION**

_____, Chairman
Morris K. Dunlap

_____, Secretary
John L. Schlegel

This plat approved and all dedications shown hereon are accepted by the City Council of the City of Wichita, Kansas, this _____ day of _____, 2005.

AT THE DIRECTION OF THE WICHITA CITY COUNCIL

_____, Mayor
Carlos Mayans

_____, City Clerk
Karen Sublett

State of Kansas)
County of Sedgwick) ss

The dedications shown on the plat, if any, are hereby accepted by the Board of County Commissioners, Sedgwick County, Kansas, on _____, 2005.

(Seal)
_____, Commission Chairman
David M. Unruh

Attest: _____, County Clerk
Don Brace

(Seal)

**TERRA TECH
LAND SURVEYING, INC.**

22200 W 63rd St. 3,
Wichita, Kansas 67149
(316) 734-2365 / 734-1273
Fax (316) 734-5274