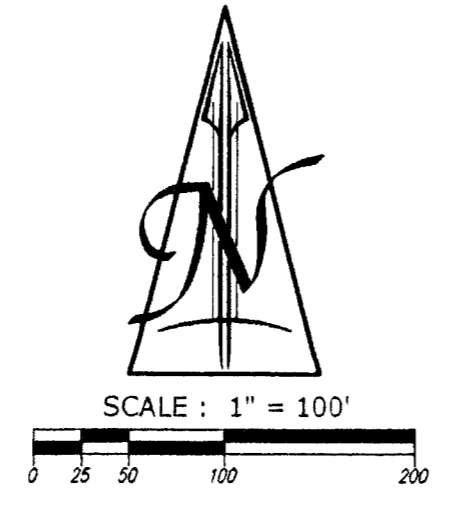
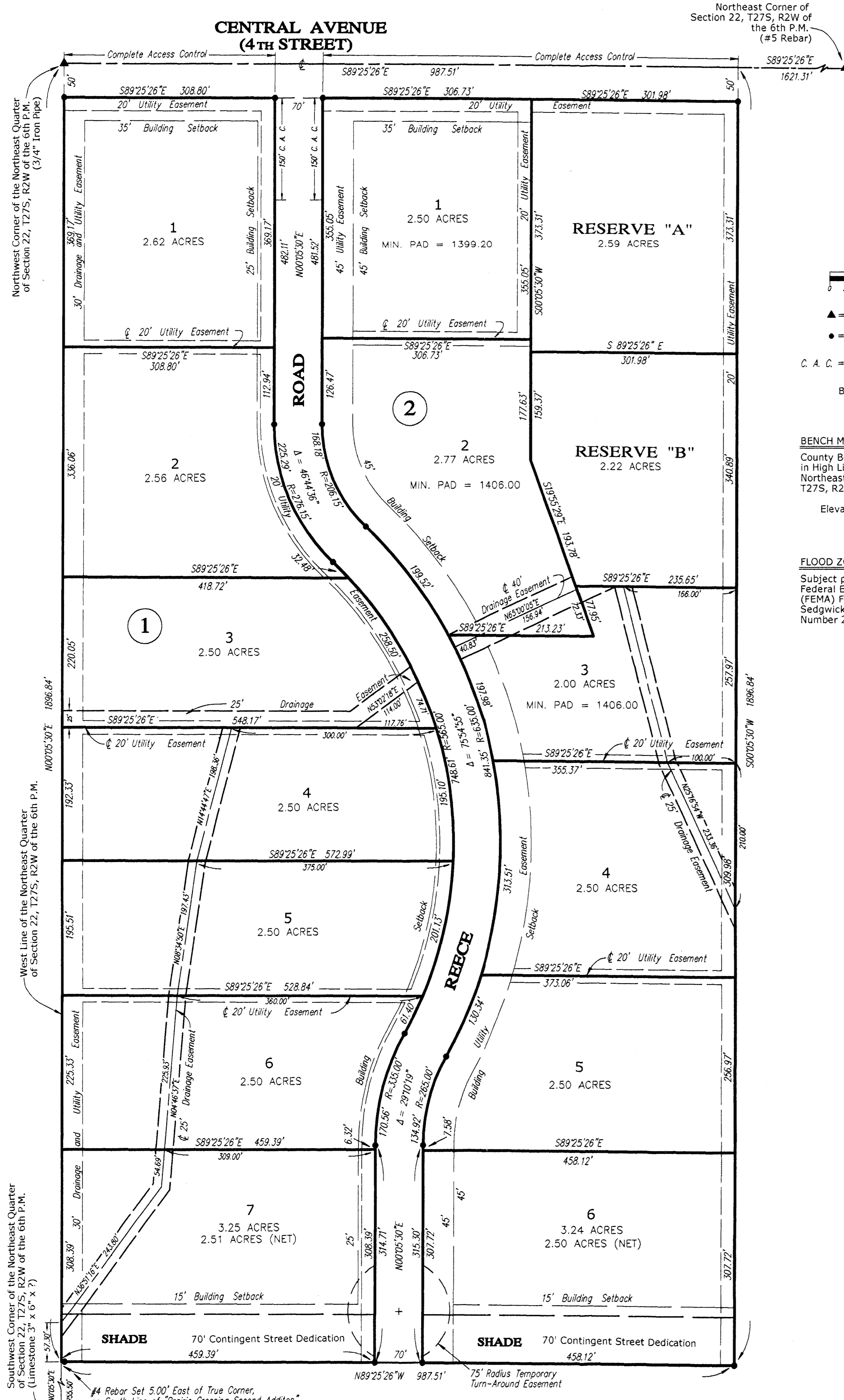


CENTRAL AVENUE (4th STREET)

FINAL PLAT OF "PRAIRIE CROSSING SECOND ADDITION" TO SEDGWICK COUNTY, KANSAS IN THE NORTHEAST QUARTER OF SECTION 22, TOWNSHIP 27 SOUTH, RANGE 2 WEST OF THE 6TH P.M.



▲ = Section Corner Found as noted
● = #4 Rebar Set with I.D. Cap "TTL51 CLS22"
C. A. C. = Complete Access Control
Bearing Basis Assumed

BENCH MARK: County Bench Mark, Railroad Spike in High Line Pole 35' Northwest of Northeast Corner of Section 22, T27S, R2W of the 6th P.M. Elevation: 1390.66 MSL

FLOOD ZONE: Subject property is in Zone C, as shown of Federal Emergency Management Agency (FEMA) Flood Insurance Rate Map (FIRM) for Sedgwick County, Kansas, Community Panel Number 200321 0200 A, effective June 3, 1986.

State of Kansas ) ss Sedgwick County )

Terra Tech Land Surveying, Inc., a corporation registered and authorized to practice Land Surveying in the State of Kansas, hereby certifies that it has surveyed and platted "PRAIRIE CROSSING SECOND ADDITION", to Sedgwick County, Kansas, being a re-plat of "PRAIRIE CROSSING", an Addition to Sedgwick County, Kansas, and the accompanying plat is a true and correct exhibit of such re-survey of land formerly described as:

The North 1896.77 feet of the West 987.47 feet of the Northeast Quarter of Section 22, Township 27 South, Range 2 West of the Sixth Principal Meridian, Sedgwick County, Kansas.

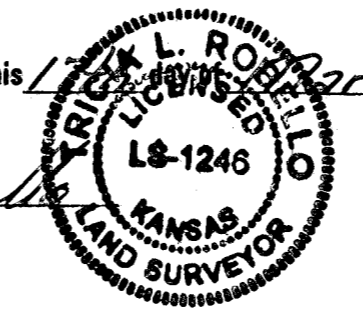
TERRA TECH LAND SURVEYING, INC.

Signature of Michèle Webster, LS #958, dated March 2, 2005.



Reviewed in accordance with K.S.A. 58-2005 on this March 2, 2005.

Tricia L. Robello, LS#1246 Deputy County Surveyor Sedgwick County, Kansas



Entered on transfer record this day of 2005.

Don Brace, County Clerk

State of Kansas ) ss Sedgwick County ) This is to certify that this instrument was filed for record in the Register of Deeds Office, at o'clock M., on the day of 2005.

Bill Meek, Register of Deeds

Tonya Buckingham, Deputy

This plat of "PRAIRIE CROSSING SECOND ADDITION", to Sedgwick County, Kansas, has been submitted to and approved by the Wichita-Sedgwick County Metropolitan Area Planning Commission, Wichita, Kansas.

Dated this day of 2005.

WICHITA-SEDGWICK COUNTY METROPOLITAN AREA PLANNING COMMISSION

Chairman: Morris K. Dunlap Secretary: John L. Schlegel

This plat approved and all dedications shown hereon are accepted by the City Council of the City of Wichita, Kansas, this day of 2005.

AT THE DIRECTION OF THE WICHITA CITY COUNCIL

Mayor: Carlos Mayans City Clerk: Karen Sublett

State of Kansas ) ss County of Sedgwick )

The dedications shown on the plat, if any, are hereby accepted by the Board of County Commissioners, Sedgwick County, Kansas, on 2005.

Commission Chairman: David M. Unruh

County Clerk: Don Brace

Register of Deeds: Bill Meek Deputy: Tonya Buckingham

TERRA TECH LAND SURVEYING INC.

Signature of Michèle Webster, dated 3-2-05.

22200 W. 63rd St. S. Via, Kansas 67149 (316) 794-2863 / 794-3273 Fax (316) 794-3274