

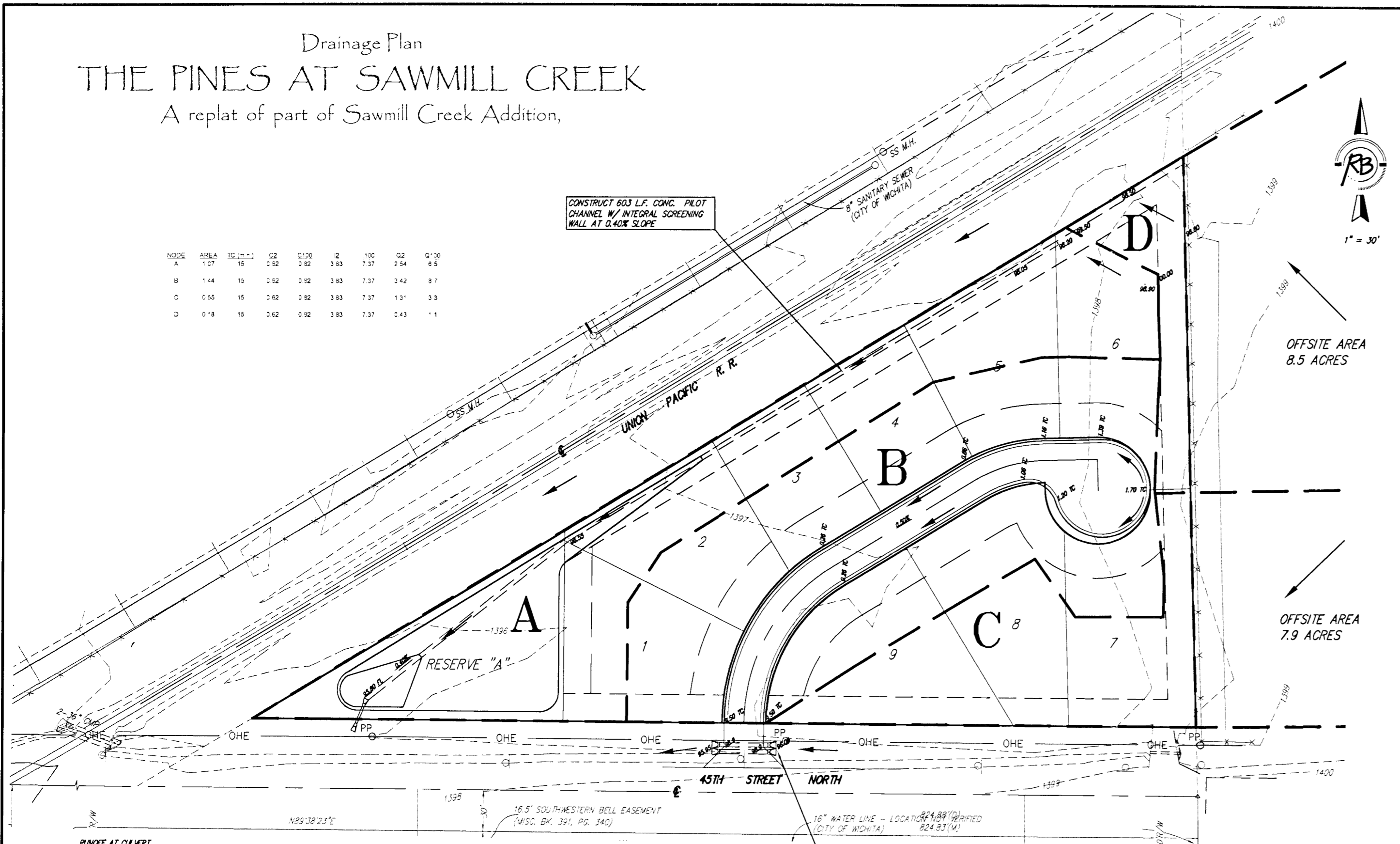
Drainage Plan

THE PINES AT SAWMILL CREEK

A replat of part of Sawmill Creek Addition,

NODE	AREA	TC (ft)	Q2	Q100	Q	100	Q2	Q100
A	1.07	15	0.62	0.82	3.83	7.37	2.54	6.5
B	1.44	15	0.62	0.82	3.83	7.37	3.42	8.7
C	0.55	15	0.62	0.82	3.83	7.37	1.31	3.3
D	0.18	15	0.62	0.92	3.83	7.37	0.43	1.1

CONSTRUCT 603 LF. CONC. PILOT CHANNEL W/ INTEGRAL SCREENING WALL AT 0.40% SLOPE



OFFSITE AREA
8.5 ACRES

OFFSITE AREA
7.9 ACRES

RUNOFF AT CULVERT
 $Q_{24} = cA = 0.67 \times 5.14 \text{ in./hr} \times 24.4 \text{ acres} = 84.0 \text{ cfs}$
 $Q_{100} = cA = 0.58 \times 4.71 \text{ in./hr} \times 24.4 \text{ acres} = 66.7 \text{ cfs}$
 HW₂₄ Elev. = 1397.35
 HW₁₀₀ Elev. = 1396.71
 Top of Rail Elev. = 1398.10

RUNOFF AT CULVERT
 $Q_{24} = cA = 0.65 \times 5.14 \text{ in./hr} \times 10.7 \text{ acres} = 36.8 \text{ cfs}$

DWG FILE: SAWMILL BASE
 PROJECT NO. 3079
 APR. 24, 2007



Ruggles & Bohm, P.A.
 Engineering, Surveying, Land Planning
 924 North Main
 Wichita, Kansas 67203
 www.rblpa.com
 (316) 264-8008
 (316) 264-4825 fax
 E-mail: info@rblpa.com