

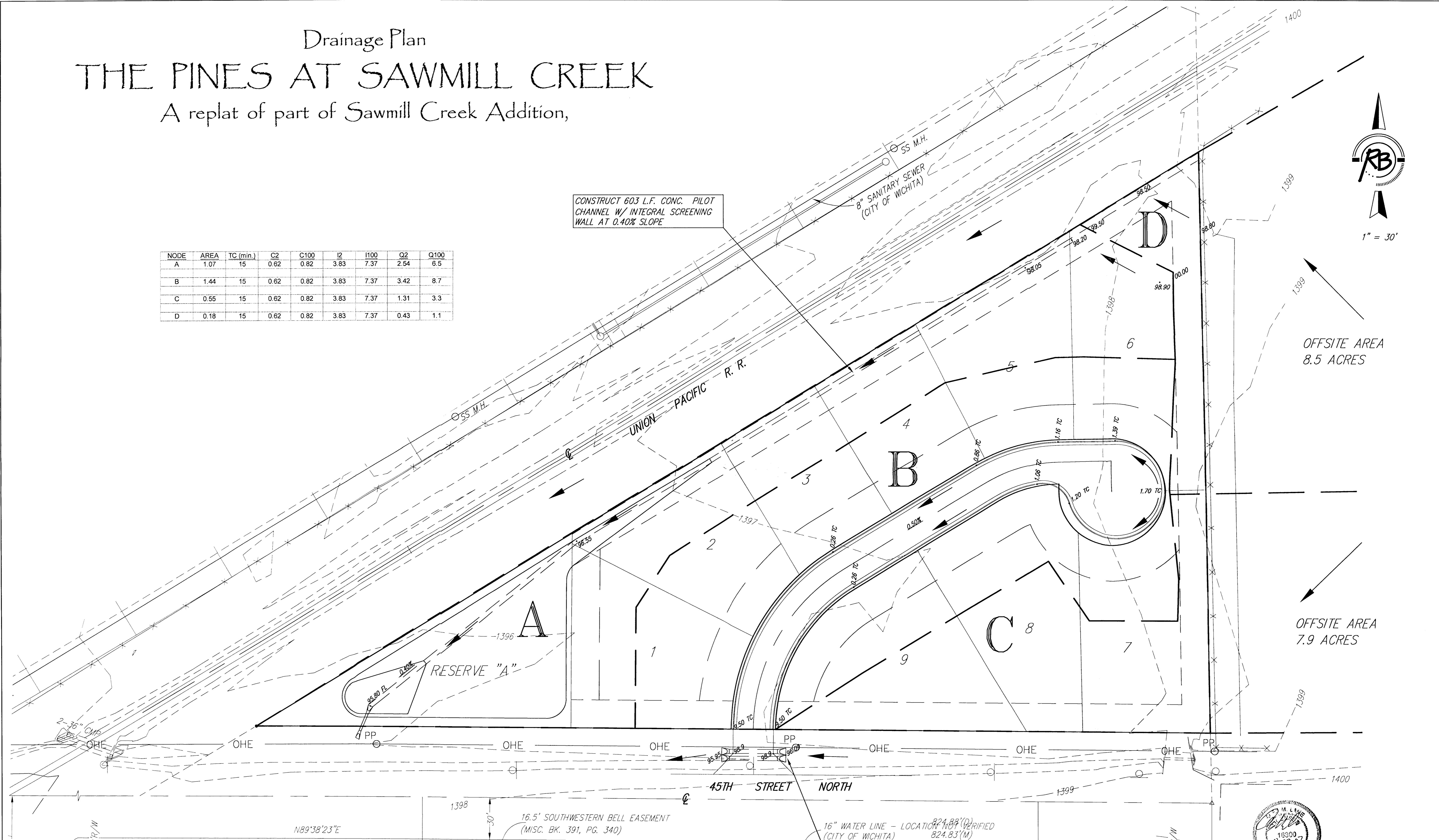
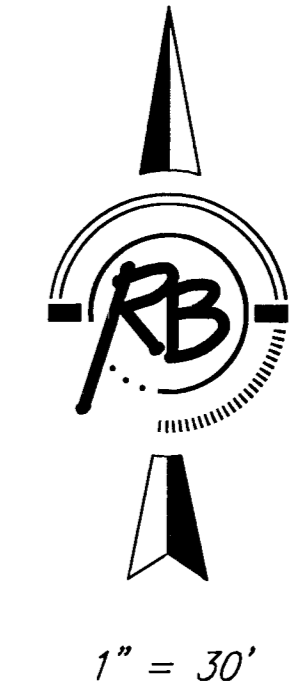
# Drainage Plan

## THE PINES AT SAWMILL CREEK

A replat of part of Sawmill Creek Addition,

NODE	AREA	TC (min.)	C2	C100	I2	I100	Q2	Q100
A	1.07	15	0.62	0.82	3.83	7.37	2.54	6.5
B	1.44	15	0.62	0.82	3.83	7.37	3.42	8.7
C	0.55	15	0.62	0.82	3.83	7.37	1.31	3.3
D	0.18	15	0.62	0.82	3.83	7.37	0.43	1.1

CONSTRUCT 603 L.F. CONG. PILOT CHANNEL W/ INTEGRAL SCREENING WALL AT 0.40% SLOPE



**RUNOFF AT CULVERT**  
 $Q_{100} = cIA = 0.67 \times 5.14 \text{ in./hr} \times 24.4 \text{ acres} = 84.0 \text{ cfs}$   
 $Q_{50} = cIA = 0.58 \times 4.71 \text{ in./hr} \times 24.4 \text{ acres} = 66.7 \text{ cfs}$   
 $HW_{100} \text{ Elev.} = 1397.35$   
 $HW_{50} \text{ Elev.} = 1396.71$   
 Top of Rail Elev. = 1398.10

**RUNOFF AT CULVERT**  
 $Q_{100} = cIA = 0.65 \times 5.14 \text{ in./hr} \times 10.7 \text{ acres} = 36.8 \text{ cfs}$



**Ruggles & Bohm, P.A.**  
 Engineering, Surveying, Land Planning  
 924 North Main  
 Wichita, Kansas 67203  
 www.rtkansas.com  
 (316) 264-8008  
 (316) 264-4621 fax  
 E-mail: info@rtkansas.com

DWG FILE: SURVEY BASE  
 PROJECT NO. 3017P  
 Apr. 24, 2007