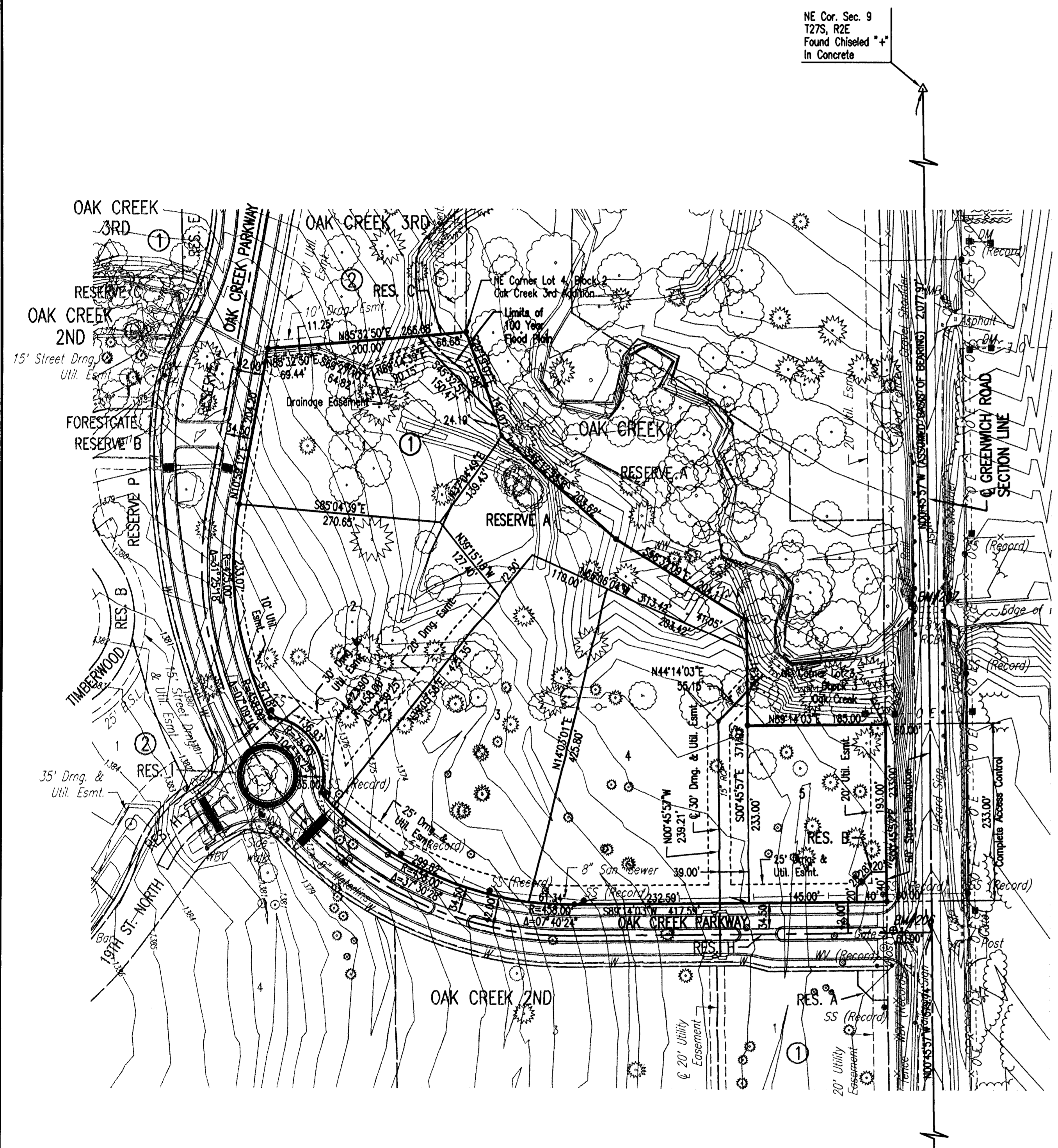


OAK CREEK 4TH

AN ADDITION TO WICHITA, SEDGWICK COUNTY, KANSAS



NE Cor. Sec. 9
T27S, R2E
Found Chiseled "4"
In Concrete

S.E. Cor. NE1/4
Sec. 9, T27S, R2E
Found Railroad Spike

STATE OF KANSAS }
COUNTY OF SEDGWICK } SS

WE, PROFESSIONAL ENGINEERING CONSULTANTS, P.A., ENGINEERS AND SURVEYORS IN AFORESAID STATE AND COUNTY, DO HEREBY CERTIFY THAT OF

THIS _____ DAY OF _____, 2007, WE HAVE SURVEYED

AND PLATTED OAK CREEK 4TH, AN ADDITION TO WICHITA, SEDGWICK COUNTY, KANSAS, INTO LOTS, A BLOCK, AND RESERVES, THE SAME BEING DESCRIBED AS FOLLOWS:

A REPLAT OF LOTS 3 AND 4, BLOCK 3, AND RESERVE "F", OAK CREEK, AN ADDITION TO WICHITA, SEDGWICK COUNTY, KANSAS, AND TWO PARTS OF RESERVE "A" IN SAID ADDITION DESCRIBED AS FOLLOWS:

PART OF RESERVE "A" BEGINNING AT THE NORTHWEST CORNER OF LOT 3; THENCE BEARING N00°45'57"W, A DISTANCE OF 166.65 FEET TO THE NORTHEAST CORNER OF LOT 4; THENCE BEARING S58°32'09"E, A DISTANCE OF 52.01 FEET; THENCE BEARING S00°45'57"E, A DISTANCE OF 138.91 FEET; THENCE BEARING S89°14'03"W, A DISTANCE OF 44.00 FEET TO THE POINT OF BEGINNING; AND PART OF RESERVE "A" BEGINNING AT THE SOUTHWEST CORNER OF LOT 4; THENCE ALONG A CURVE TO THE LEFT (NON TANGENT), HAVING A RADIUS OF 75.00 FEET, A CHORD BEARING N35°08'58"W, A CHORD DISTANCE OF 118.69 FEET AND THROUGH A CENTRAL ANGLE OF 104°36'25", AN ARC DISTANCE OF 136.93 FEET; THENCE BEARING N40°04'51"E, A DISTANCE OF 482.92 FEET; THENCE BEARING S49°12'55"E, A DISTANCE OF 203.62 FEET; THENCE BEARING S89°14'03"W, A DISTANCE OF 168.55 FEET; THENCE BEARING S34°33'57"W, A DISTANCE OF 402.30 FEET TO THE POINT OF BEGINNING;

A REPLAT OF LOTS 4 AND 5, BLOCK 2, OAK CREEK 3RD, AN ADDITION TO WICHITA, SEDGWICK COUNTY, KANSAS.

ALL PUBLIC EASEMENTS LYING WITHIN THE ABOVE DESCRIBED TRACT OF LAND ARE HEREBY VACATED AND REPLATTED BY VIRTUE OF KSA 12-512(b) AMENDED.

JAMES R. BECKETT, R.L.S. NO. 832
PROFESSIONAL ENGINEERING CONSULTANTS, P.A.

THIS ADDITION IS SUBJECT TO THE CONDITIONS OF OAK CREEK COMMUNITY UNIT PLAN (CUP 2004-09, DP-274).

EASEMENTS FOR THE CONSTRUCTION AND MAINTENANCE OF PUBLIC UTILITIES ARE HEREBY GRANTED.

RESERVE "B" IS HEREBY PLATTED FOR LANDSCAPING, SIGNAGE, ENTRY MONUMENTS, DRAINAGE, SIDEWALKS, AND UTILITIES CONFINED TO EASEMENTS. RESERVES "A" AND "C" ARE HEREBY PLATTED FOR DRAINAGE, LAKES, AND UTILITIES. RESERVES "A" AND "B" SHALL BE OWNED AND MAINTAINED BY AN OWNER'S ASSOCIATION TO BE FORMED WITHIN OAK CREEK 4TH. RESERVE "C" SHALL BE OWNED AND MAINTAINED BY THE OWNER OF LOT 1, BLOCK 1.

A DRAINAGE PLAN HAS BEEN APPROVED FOR THIS PLAT. ALL DRAINAGE EASEMENTS, RIGHTS-OF-WAY, OR RESERVES SHALL REMAIN AT ESTABLISHED GRADES AND UNOBSTRUCTED TO ALLOW FOR THE CONVEYANCE OF STORM WATER, UNLESS MODIFIED WITH THE APPROVAL OF THE CITY ENGINEER.

KNOW ALL MEN BY THESE PRESENTS THAT WE, THE UNDERSIGNED PROPERTY OWNERS OF THE LAND AS ABOVE SET FORTH IN THE SURVEYOR'S CERTIFICATE, HAVE CAUSED THE LAND TO BE SURVEYED AND PLATTED INTO LOTS, A BLOCK, AND RESERVES, THE SAME TO BE KNOWN AS OAK CREEK 4TH, AN ADDITION TO WICHITA, SEDGWICK COUNTY, KANSAS.

OWNERS:
SLAWSON COMMERCIAL PROPERTIES, L.L.C.

GEORGE SHERMAN, VICE PRESIDENT

STATE OF KANSAS }
COUNTY OF SEDGWICK } SS

THIS INSTRUMENT WAS ACKNOWLEDGED BEFORE ME ON THIS _____ DAY OF _____, 2007, BY GEORGE SHERMAN, VICE PRESIDENT OF SLAWSON COMMERCIAL PROPERTIES, L.L.C.

_____, NOTARY PUBLIC

MY APPOINTMENT EXPIRES:

WE, INTRUST BANK, N.A., HOLDER OF A MORTGAGE ON THE ABOVE DESCRIBED PROPERTY, DO HEREBY CONSENT TO THE PLATTING OF OAK CREEK 4TH, AN ADDITION TO WICHITA, SEDGWICK COUNTY, KANSAS.

ROGER G. EASTWOOD, SENIOR VICE PRESIDENT

STATE OF KANSAS }
COUNTY OF SEDGWICK } SS

THIS INSTRUMENT WAS ACKNOWLEDGED BEFORE ME ON THIS _____ DAY OF _____, 2007, BY ROGER G. EASTWOOD, SENIOR VICE PRESIDENT OF

INTRUST BANK.

_____, NOTARY PUBLIC

MY APPOINTMENT EXPIRES:

THIS PLAT OF OAK CREEK 4TH HAS BEEN SUBMITTED TO AND APPROVED BY THE WICHITA-SEDGWICK COUNTY METROPOLITAN AREA PLANNING COMMISSION, WICHITA, KANSAS.

DATED THIS _____ DAY OF _____, 2007.

WICHITA-SEDGWICK COUNTY METROPOLITAN AREA PLANNING COMMISSION

_____, CHAIR
DARRELL A. DOWNING

_____, SECRETARY
JOHN L. SCHLEGEL

REVIEWED IN ACCORDANCE WITH K.S.A. 58-2005 ON THIS _____ DAY OF _____, 2007.

TRICIA L. ROBELLO, LS #1246
DEPUTY COUNTY SURVEYOR
SEDGWICK COUNTY KANSAS

THIS PLAT IS APPROVED AND ALL DEDICATIONS SHOWN HEREON, IF ANY ARE ACCEPTED BY THE CITY COUNCIL OF THE CITY OF WICHITA, KANSAS, THIS _____ DAY OF _____, 2007.

_____, MAYOR
CARL BREWER

_____, CITY CLERK
KAREN SUBLETT

ENTERED ON TRANSFER RECORD THIS _____ DAY OF _____, 2007.

_____, COUNTY CLERK
DONALD BRACE

THIS IS TO CERTIFY THAT THIS INSTRUMENT WAS FILED FOR RECORD IN THE REGISTER OF DEEDS OFFICE AT _____ M., ON THE _____ DAY OF _____, 2007.

_____, REGISTER OF DEEDS
BILL MEEK

_____, DEPUTY
TONYA BUCKINGHAM

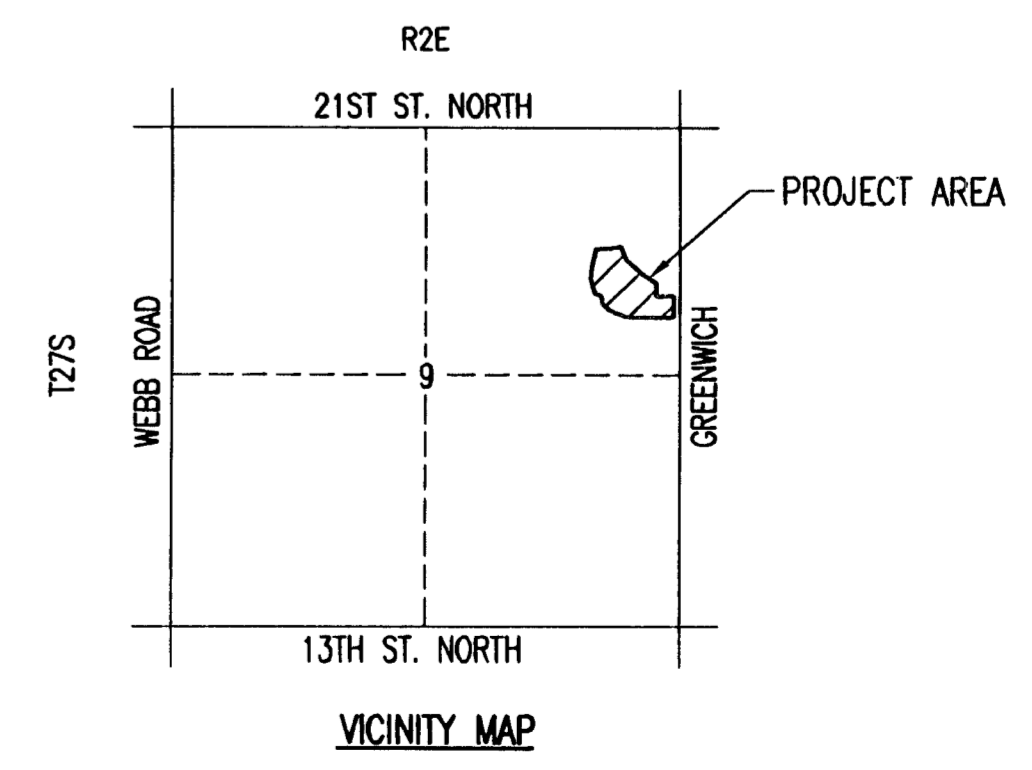
BENCHMARKS BM
BM #206
1" Post 5' W of N gate post to field entrance, W side of Greenwich Road, 700' ± N of railroad tracks and 500' ± S of RCB culvert.
Elev. = 1365.87 N.G.V.D.
178.47 City Datum
BM #207
Chiseled "d" on top of concrete headwall on NW corner of RCB under Greenwich Road, 1100' ± S of 21st Street North.
Elev. = 1360.065 N.G.V.D.
172.665 City Datum

SCALE: 1" = 100'

- = 1/2" REBAR W/PEC CAP UNLESS OTHERWISE NOTED
- △ = SECTION CORNER

LEGEND

- Coniferous Tree
- Deciduous Tree
- Utility Pole
- Power Pole
- Gate Post
- Mailbox
- Sign
- Sanitary Sewer Manhole
- Deadman
- Water Valve
- Fire Hydrant
- Blowoff Valve
- Water Well
- Culvert
- Sanitary Sewer Force Main
- Guard Rail
- Overhead Electric
- Sanitary Sewer
- Waterline
- Fence



PRELIMINARY PLAT AREA
GROSS ACREAGE = 9.5 ACRES
DATE OF PREPARATION: MAY 03, 2007
DATE OF TOPOGRAPHIC SURVEY: MARCH 2004
OWNER: SLAWSON COMMERCIAL PROPERTIES, LLC
727 N. WACO, SUITE 400
WICHITA, KS 67203
SUBDIVIDER: PROFESSIONAL ENGINEERING CONSULTANTS, P.A.
303 S. TOPEKA
WICHITA, KS 67202