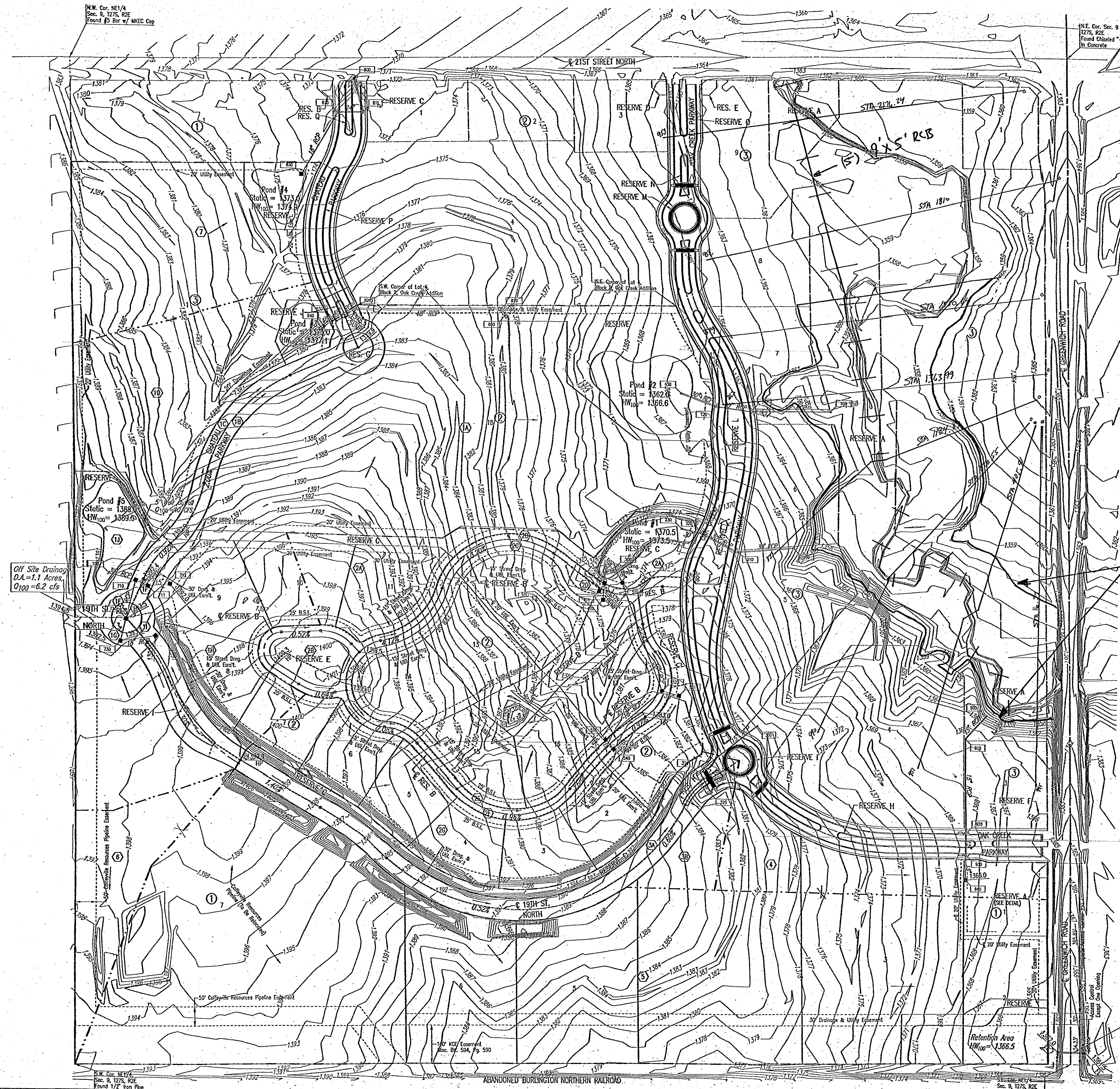


OAK CREEK 2ND
 AN ADDITION TO WICHITA, SEDGWICK COUNTY, KANSAS
 DRAINAGE PLAN

REVISED 4-28-2006



- BENCHMARKS:**
- BM #105 (Datum)
 COW brass disc in NW corner of railroad signal base, W side of Greenwicht Road, 1/2 mile S of 21st Street North.
 Elev. = 1370.59 N.G.V.D.
 185.19 City Datum
 - BM #206
 "T" 1/2" x 5/8" W of N gate post to field entrance, W side of Greenwicht Road, 700' ± N of railroad tracks and 500' ± S of RCB culvert.
 Elev. = 1385.87 N.G.V.D.
 178.47 City Datum
 - BM #207
 Chisled "F" on top of concrete headwall on NW corner of RCB under Greenwicht Road, 1100' ± S of 21st Street North.
 Elev. = 1380.05 N.G.V.D.
 172.865 City Datum
 - BM #208
 Railroad spike in W face of 20" Elm on E right of way line of Greenwicht Road 800' ± S of 21st Street North.
 Elev. = 1367.70 N.G.V.D.
 180.30 City Datum
 - BM #209
 Chisled "F" on NW corner of traffic signal base, at SW corner of Greenwicht Road & 21st Street North.
 Elev. = 1383.54 N.G.V.D.
 178.14 City Datum
 - BM #215
 Chisled "F" in top center curb inlet 600' W of Greenwicht Road on S side of 21st Street North.
 Elev. = 1383.265 N.G.V.D.
 175.885 City Datum
 - BM #216
 Chisled "F" on S end of curb & gutter at E of Median, Torque entrance on N side of 21st Street North 1400' ± W of Greenwicht Road.
 Elev. = 1384.55 N.G.V.D.
 177.15 City Datum

- SCALE: 1" = 100'
- LEGEND**
- (A) BASIN IDENTIFIER
 - MINOR BASIN BOUNDARY
 - - - MAJOR BASIN BOUNDARY
 - EMERGENCY STORM WATER FLOW
 - STORM WATER FLOW
 - NODE IDENTIFIER
 - STORM SEWER AND INLET
 - STORM SEWER AND MANHOLE
- SEE SUPPORTING CALCULATIONS FOR HYDROLOGY

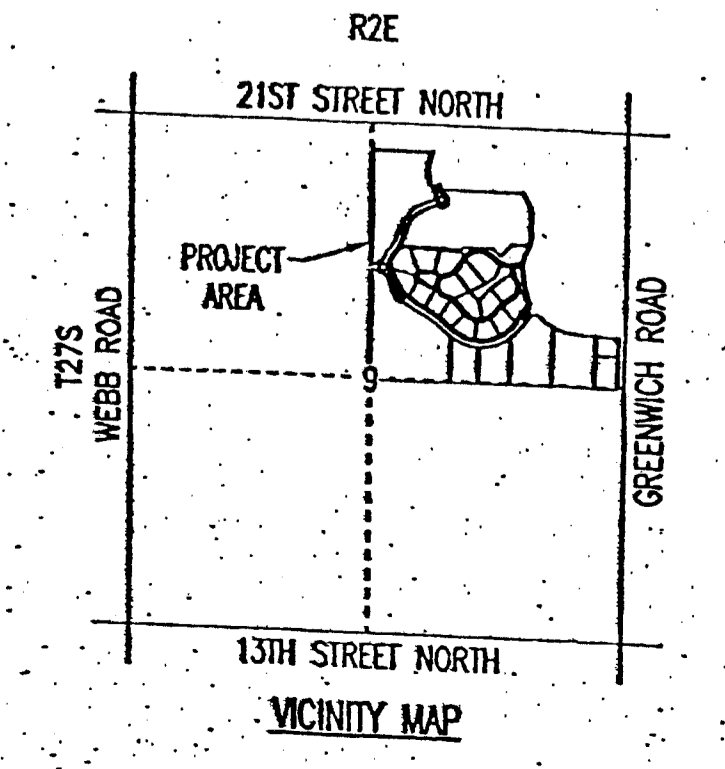
RESERVE A DETAIL

100 YEAR FLOOD ELEVATION. APPROX. LOCATION OF 3'-5" WALL.

MINIMUM PADS	
BLOCK 1: LOTS 1-3	1369.5
BLOCK 2: LOT 1	1383.2
LOT 9	1394.6
LOTS 12 & 17	1380.5
LOT 18	1369.6
BLOCK 3: LOT 1	1380.1

PROPOSED HEC-RAS MODEL STATIONING & FLOODPLAIN LIMITS

ATTACHMENT #8



N.W. Cor. NE1/4
 Sec. 9, T27S, R2E
 Found 1/2" Iron Pipe

N.E. Cor. Sec. 9
 T27S, R2E
 Found Chisled "F"
 in Concrete

Off Site Drainage
 D.A. = 1.1 Acres
 Q₁₀₀ = 6.2 cfs

Existing 36" CMP Under Greenwicht

Retention Area
 HW₁₀₀ = 1366.5

N.W. Cor. NE1/4
 Sec. 9, T27S, R2E
 Found 1/2" Iron Pipe

ABANDONED BURLINGTON NORTHERN RAILROAD