

PLAN CHECKED BY DATE

PROFILE CHECKED BY DATE

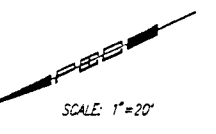
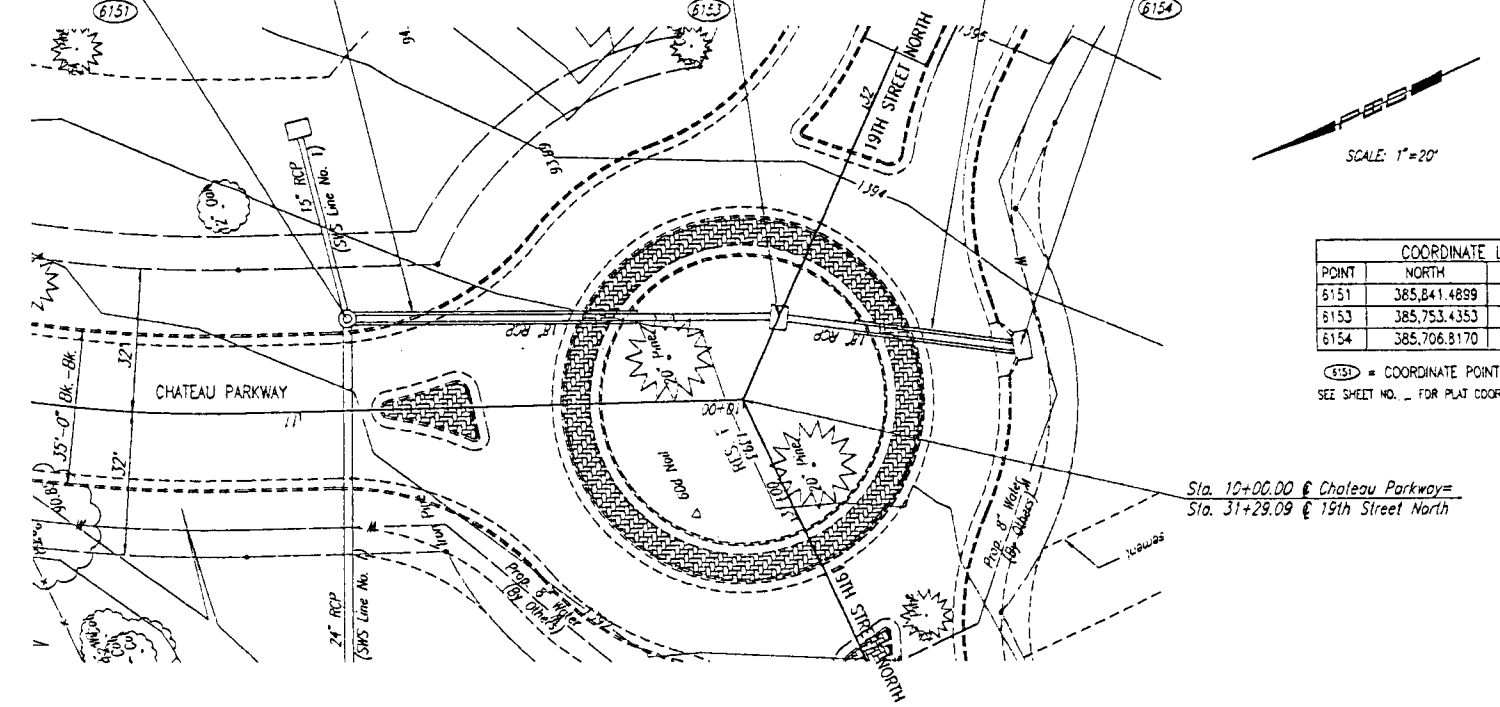
Sta. 15+00.0 SWS Line No. 1A=
 Sta. 10+00.0 SWS Line No. 1=
 @ Chateau Parkway Sta. 10+88.25, 20.43' LI.
 Reinforced Conc. Manhole
 Dia=4'-0"
 Top Elev.=1392.48
 See Sheet No. .

Install 63 L.F.
 Excavatable Flowable
 Fill to Elev. 1391.0

Sta. 15+97.0 SWS Line No. 1A=
 @ 19th Street North Sta. 31+49.09, 00.00' Pt.
 Const. Std. Area Inlet
 L=5'-4", W=3'-10"
 Top Elev.=1392.00
 Install 54.7 L.F. 18" RCP (SW)
 See Sheet No.

Install 36 L.F.
 Excavatable Flowable
 Fill to Elev. 1391.5

Sta. 16+51.7 SWS Line No. 1A=
 @ 19th Street North Sta. 31+63.52, 52.22' Pt.
 Const. Std. Type 1A Curb Inlet
 L=5'-0", W=3'-0"
 Top Elev.=1393.25
 See Sheet No.

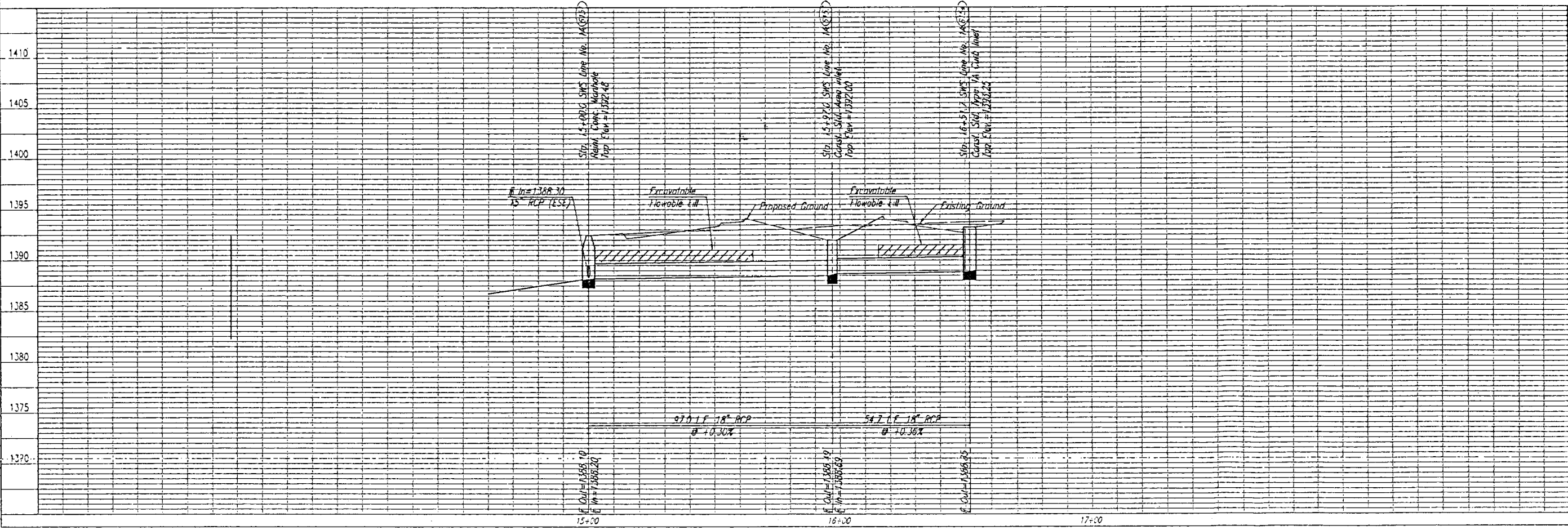


SCALE: 1"=20'

COORDINATE LIST		
POINT	NORTH	EAST
6151	385,841.4899	2,371,633.9836
6153	385,753.4353	2,371,592.3778
6154	385,706.8170	2,371,563.6833

①③④ = COORDINATE POINT NO.
 SEE SHEET NO. _ FOR PLAT COORDINATES

Sta. 10+00.00 @ Chateau Parkway=
 Sta. 31+29.09 @ 19th Street North



OKM CREEK 2ND - PHASE 2
 SWS LINE NO. 1A
 JAMES L. ARMOUR, P.E. - CITY ENGINEER
 CITY OF WICHITA, KANSAS
 Professional Engineering Consultants, P.A.
 302 S. TOPICK - WICHITA, KANSAS 67202
 316-262-2691 • FAX 316-262-3000
 Drawn by: BSL/BJM Date: October 2004
 Checked by: BSL/BJM Date: October 2004
 Scale: 1"=20'

Scale: 1"=20' (PLAN), 1"=10' (PROFILE)
 Date: 10/15/04
 Drawn by: BSL/BJM
 Checked by: BSL/BJM
 Date: 10/15/04