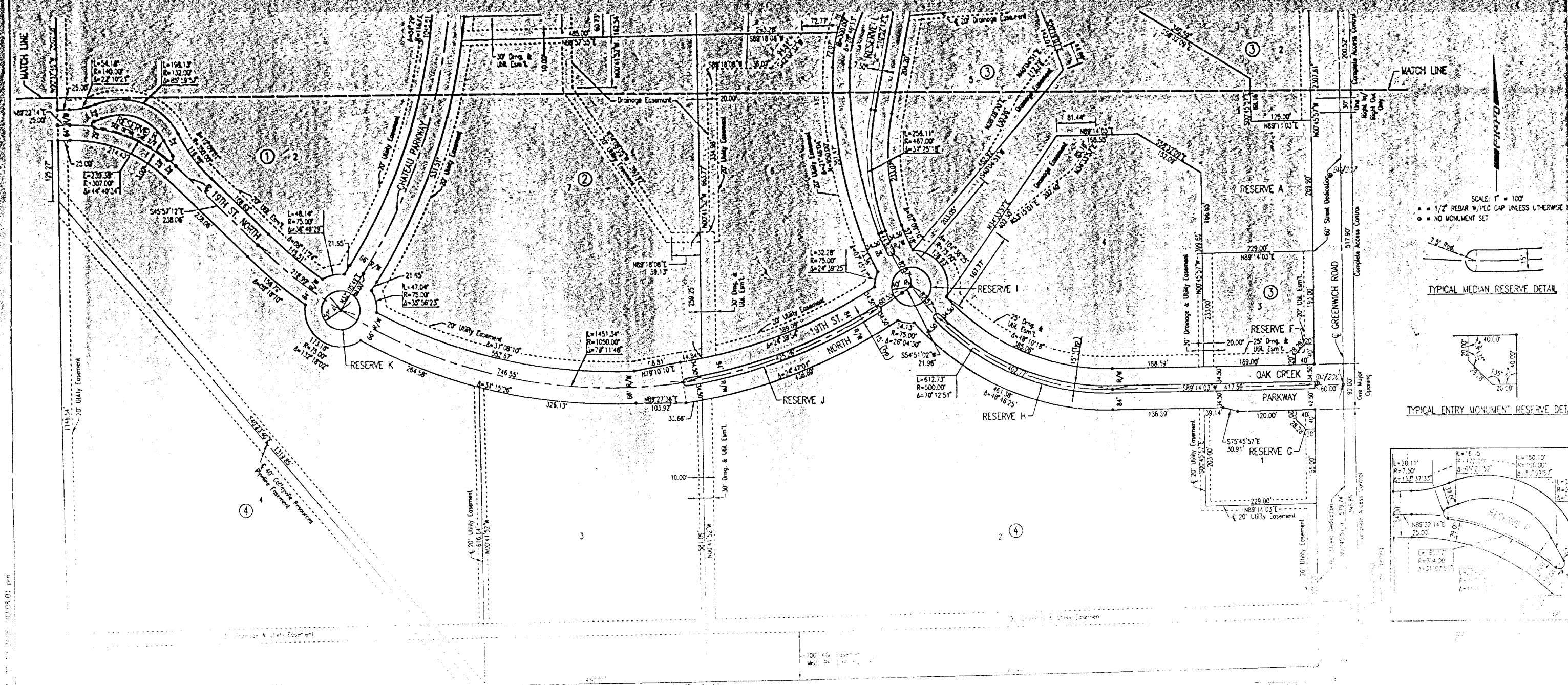


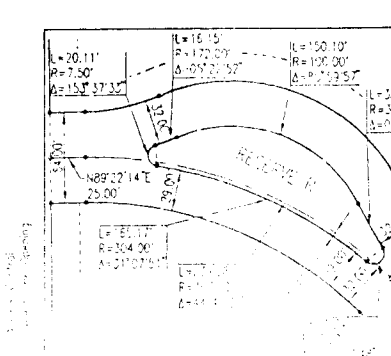
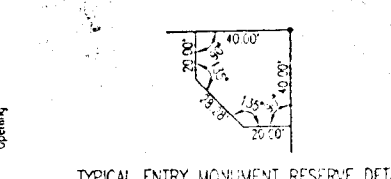
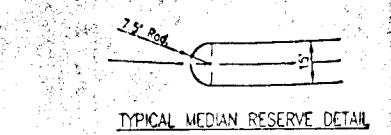
OAK CREEK

AN ADDITION TO WICHITA, SEDGWICK COUNTY, KANSAS



SCALE: 1" = 100'

- 1/2" REBAR W/ P.C. CAP UNLESS OTHERWISE NOTED
- NO MONUMENT SET



ABANDONED BURLINGTON NORTH RAILROAD