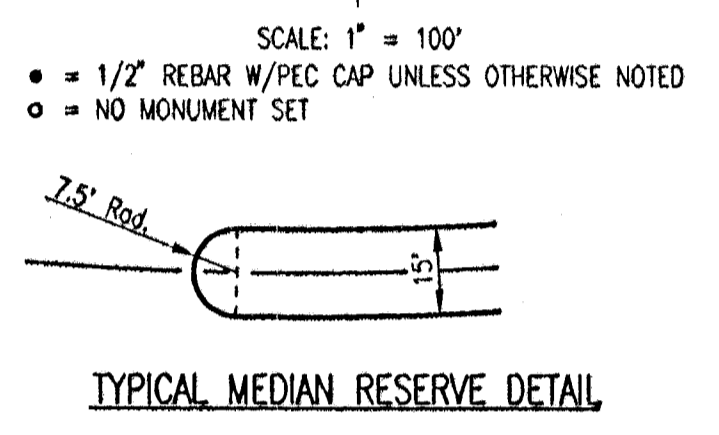
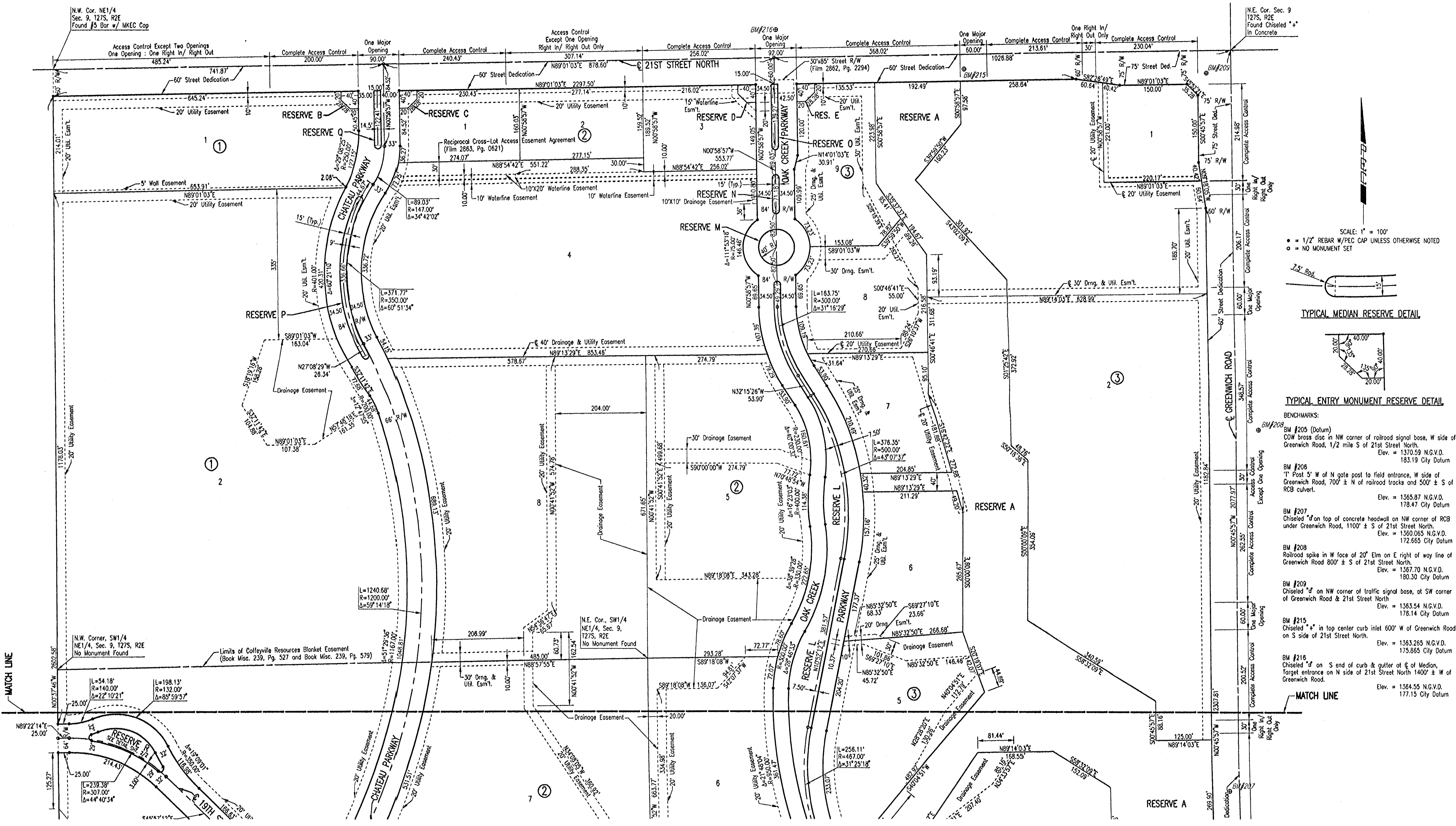


OAK CREEK

AN ADDITION TO WICHITA, SEDGWICK COUNTY, KANSAS



- BENCHMARKS:**
- BM #205 (Datum)
COW brass disc in NW corner of railroad signal base, W side of Greenwich Road, 1/2 mile S of 21st Street North.
Elev. = 1370.59 N.G.V.D.
Elev. = 183.19 City Datum
 - BM #206
"T" Post 5' W of N gate post to field entrance, W side of Greenwich Road, 700' ± N of railroad tracks and 500' ± S of RCB culvert.
Elev. = 1365.87 N.G.V.D.
Elev. = 178.47 City Datum
 - BM #207
Chiseled "d" on top of concrete headwall on NW corner of RCB under Greenwich Road, 1100' ± S of 21st Street North.
Elev. = 1360.06 N.G.V.D.
Elev. = 172.665 City Datum
 - BM #208
Railroad spike in W face of 20' Elm on E right of way line of Greenwich Road 800' ± S of 21st Street North.
Elev. = 1367.70 N.G.V.D.
Elev. = 180.30 City Datum
 - BM #209
Chiseled "d" on NW corner of traffic signal base, at SW corner of Greenwich Road & 21st Street North.
Elev. = 1363.54 N.G.V.D.
Elev. = 176.14 City Datum
 - BM #215
Chiseled "+" in top center curb inlet 600' W of Greenwich Road on S side of 21st Street North.
Elev. = 1363.265 N.G.V.D.
Elev. = 172.665 City Datum
 - BM #216
Chiseled "d" on S end of curb & gutter at @ of Median, Target entrance on N side of 21st Street North 1400' ± W of Greenwich Road.
Elev. = 1364.55 N.G.V.D.
Elev. = 177.15 City Datum