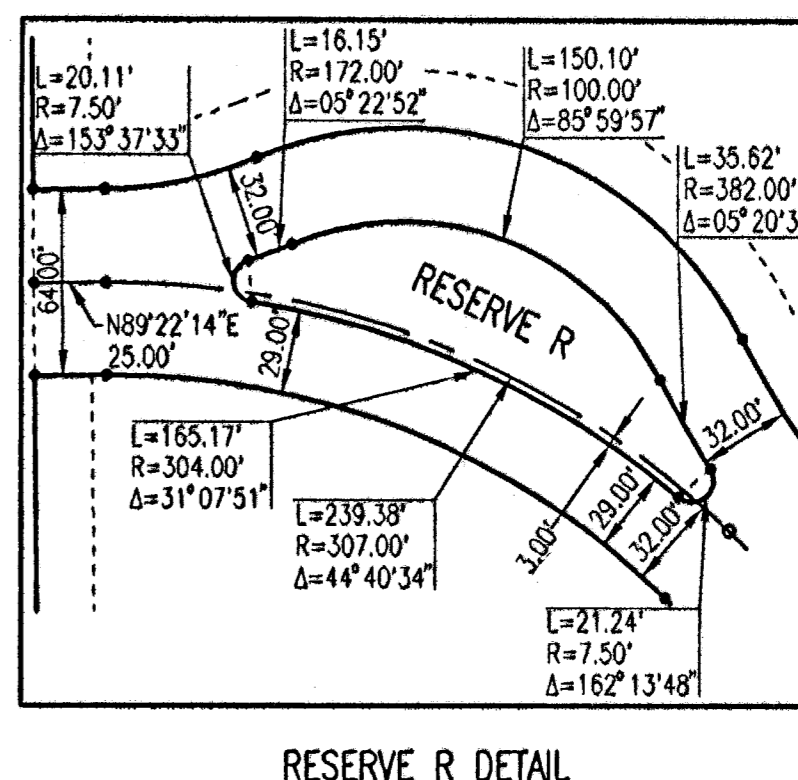
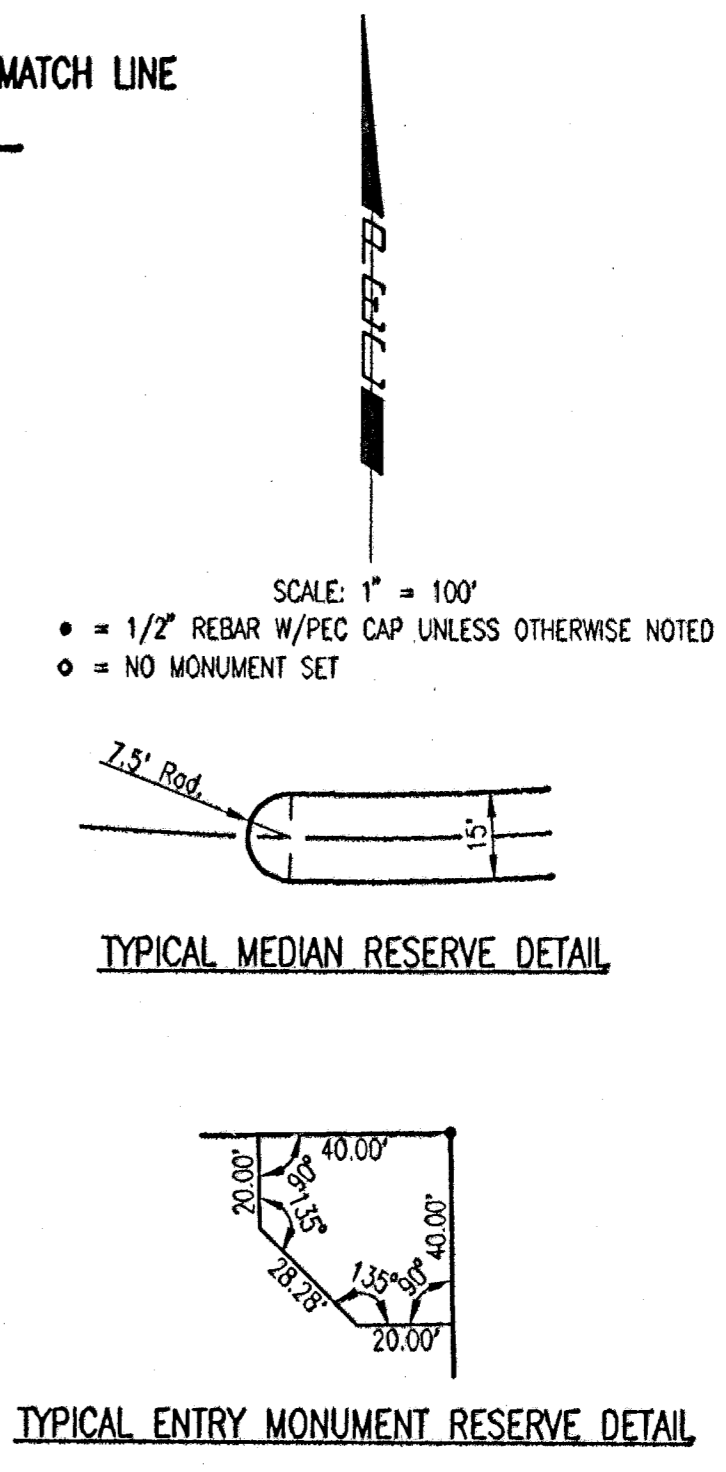
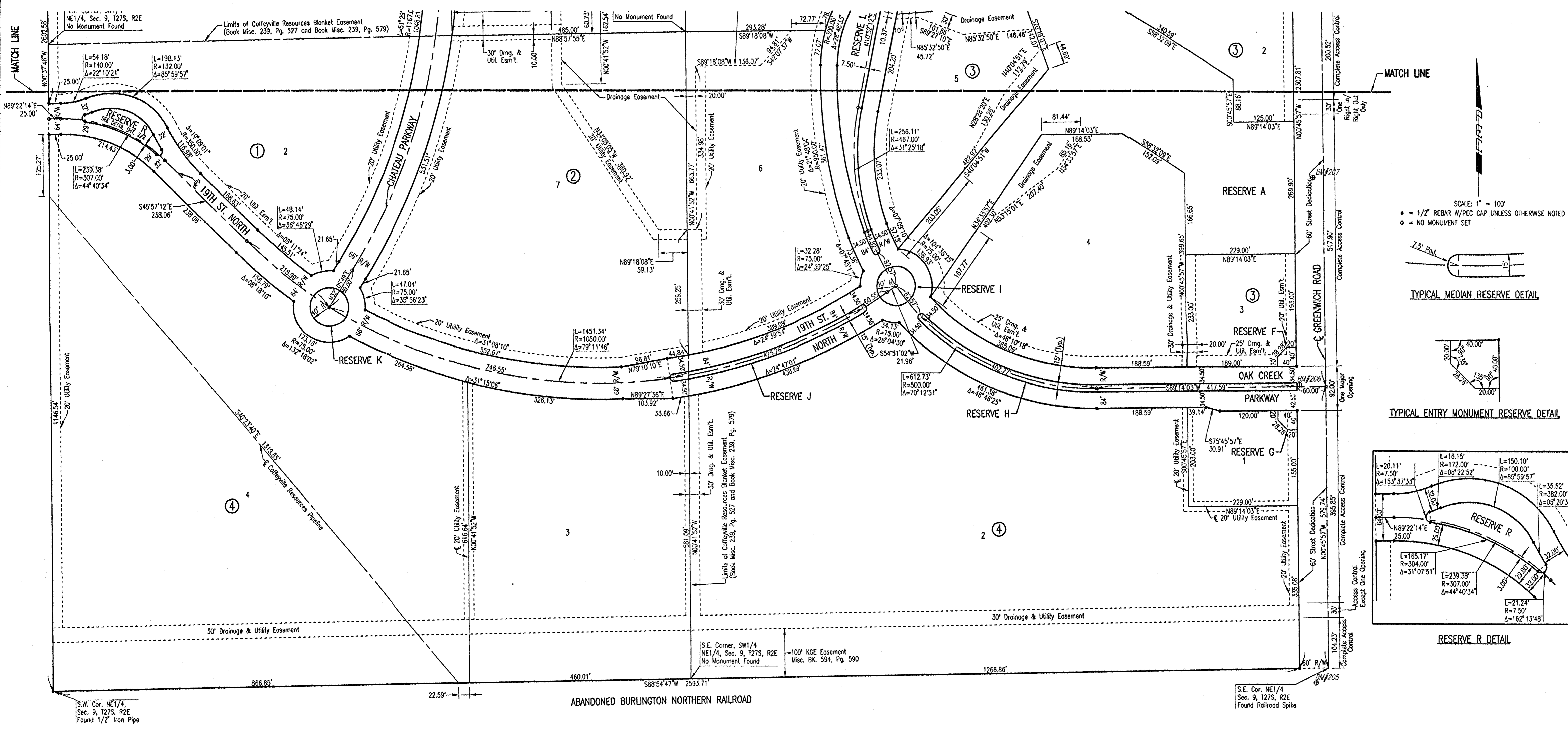


# OAK CREEK

## AN ADDITION TO WICHITA, SEDGWICK COUNTY, KANSAS



S.W. Cor. NE1/4, Sec. 9, T27S, R2E  
Found 1/2" Iron Pipe

S.E. Corner, SW1/4 NE1/4, Sec. 9, T27S, R2E  
No Monument Found

S.E. Cor. NE1/4 Sec. 9, T27S, R2E  
Found Railroad Spike