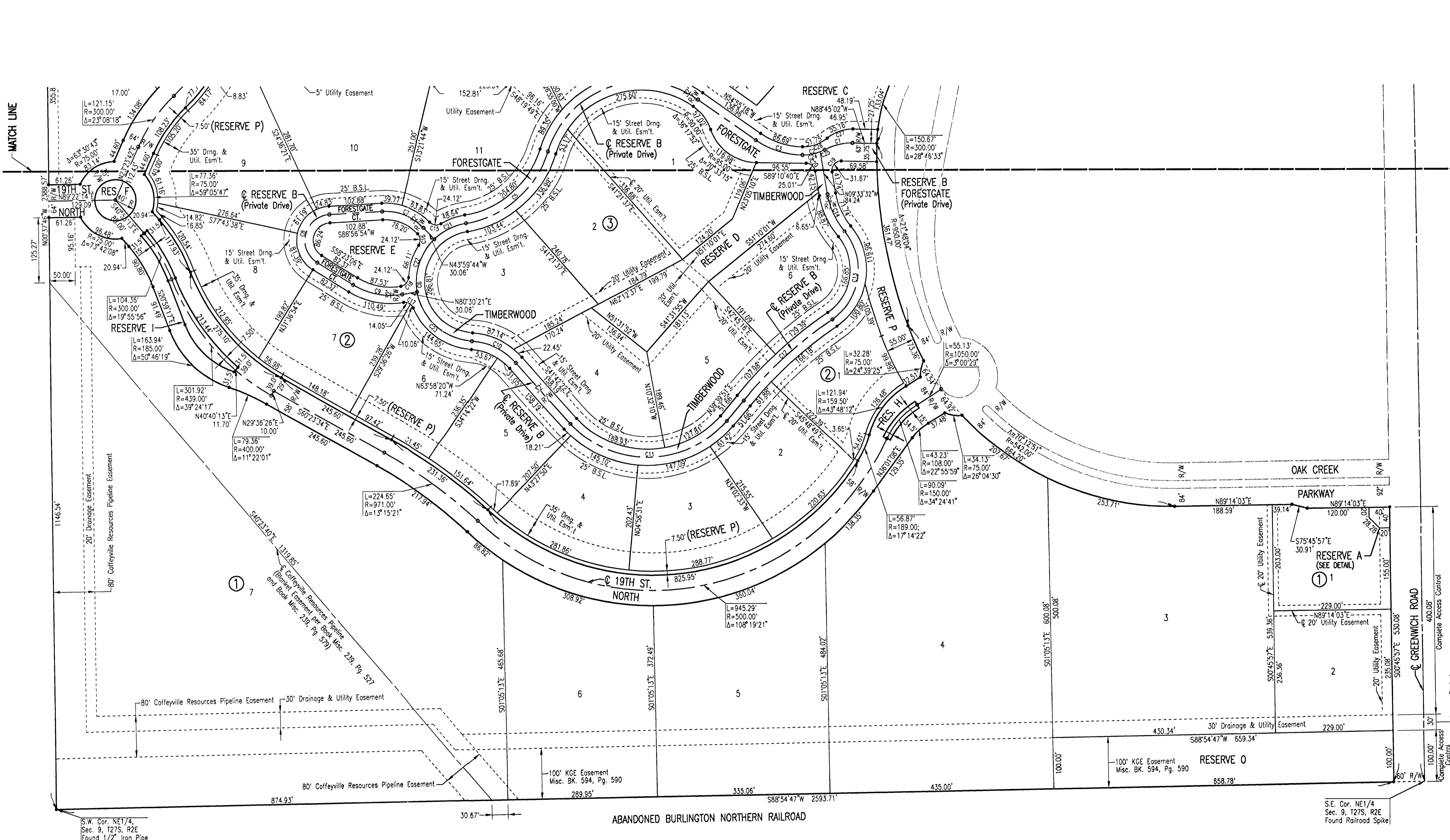


# OAK CREEK 2ND

AN ADDITION TO WICHITA, SEDGWICK COUNTY, KANSAS



MATCH LINE

SCALE: 1" = 100'

**LEGEND**

- 1/2" REBAR W/PEC CAP UNLESS OTHERWISE NOTED
- ⊕ BM#999 Bench Mark/Vertical Control Point

**BENCHMARKS:**

BM #205 (Datum)  
COW brass disc in NW corner of railroad signal base, W side of Greenwich Road, 1/2 mile S of 21st Street North.  
Elev. = 1370.59 N.G.V.D.  
183.19 City Datum

BM #206  
"T" Post 5' W of N gate post to field entrance, W side of Greenwich Road, 700' ± N of railroad tracks and 500' ± S of RCB culvert.  
Elev. = 1365.87 N.G.V.D.  
178.47 City Datum

BM #207  
Chiseled "d" on top of concrete headwall on NW corner of RCB under Greenwich Road, 1100' ± S of 21st Street North.  
Elev. = 1360.065 N.G.V.D.  
172.665 City Datum

BM #208  
Railroad spike in W face of 20' Elm on E right of way line of Greenwich Road 800' ± S of 21st Street North.  
Elev. = 1367.70 N.G.V.D.  
180.30 City Datum

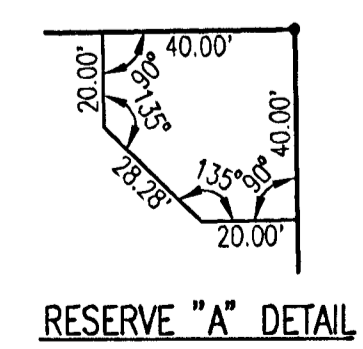
BM #209  
Chiseled "s" on NW corner of traffic signal base, at SW corner of Greenwich Road & 21st Street North.  
Elev. = 1363.54 N.G.V.D.  
176.14 City Datum

BM #215  
Chiseled "+" in top center curb inlet 600' W of Greenwich Road on S side of 21st Street North.  
Elev. = 1363.265 N.G.V.D.  
175.865 City Datum

BM #216  
Chiseled "d" on S end of curb & gutter at @ of Median, Target entrance on N side of 21st Street North 1400' ± W of Greenwich Road.  
Elev. = 1364.55 N.G.V.D.  
177.15 City Datum

**CURVE TABLE**

CURVE	LENGTH	RADIUS	DELTA
C1	57.59'	113.14'	29°09'44"
C2	44.64'	89.00'	28°44'06"
C3	96.26'	161.00'	34°15'23"
C4	359.00'	190.00'	108°15'33"
C5	222.61'	200.00'	63°45'22"
C6	333.40'	114.50'	166°49'54"
C7	89.90'	105.00'	49°03'21"
C8	126.83'	50.00'	145°20'01"
C9	99.01'	138.00'	41°06'33"
C10	97.15'	125.00'	44°31'57"
C11	344.28'	200.00'	98°37'48"
C12	232.72'	800.00'	16°40'01"
C13	193.82'	115.00'	96°33'51"
C14	80.31'	150.00'	30°40'27"
C15	24.12'	18.00'	76°45'52"
C16	24.12'	18.00'	76°45'52"
C17	24.12'	18.00'	76°45'52"
C18	24.12'	18.00'	76°45'52"
C19	31.67'	18.00'	100°48'30"
C20	25.01'	18.00'	79°37'08"
C21	69.12'	114.50'	34°35'21"
C22	110.91'	114.50'	55°29'54"
C23	153.37'	114.50'	76°44'40"
C24	35.50'	89.00'	22°51'09"
C25	9.14'	89.00'	5°52'57"
C26	51.75'	73.00'	40°37'08"
C27	55.16'	77.00'	41°02'45"



Sheet 03-11-2006 8:35:22 AM by SAH  
 Plot Scale: 1"=100'-00" 09-11-2006 3:02:08 PM by DDK  
 C:\2006\0415\003\003.dwg(0415-003-PRINCE\_PLOT\_3)