

OAK CREEK 2ND

AN ADDITION TO WICHITA, SEDGWICK COUNTY, KANSAS

FINAL TRACING REC'D

9/5/06

N.W. Cor. NE1/4
Sec. 9, T27S, R2E
Found #5 Bar w/ MKEC Cap

N.E. Cor. Sec. 9
T27S, R2E
Found Chiseled "x"
In Concrete

21ST STREET NORTH

OAK CREEK PARKWAY

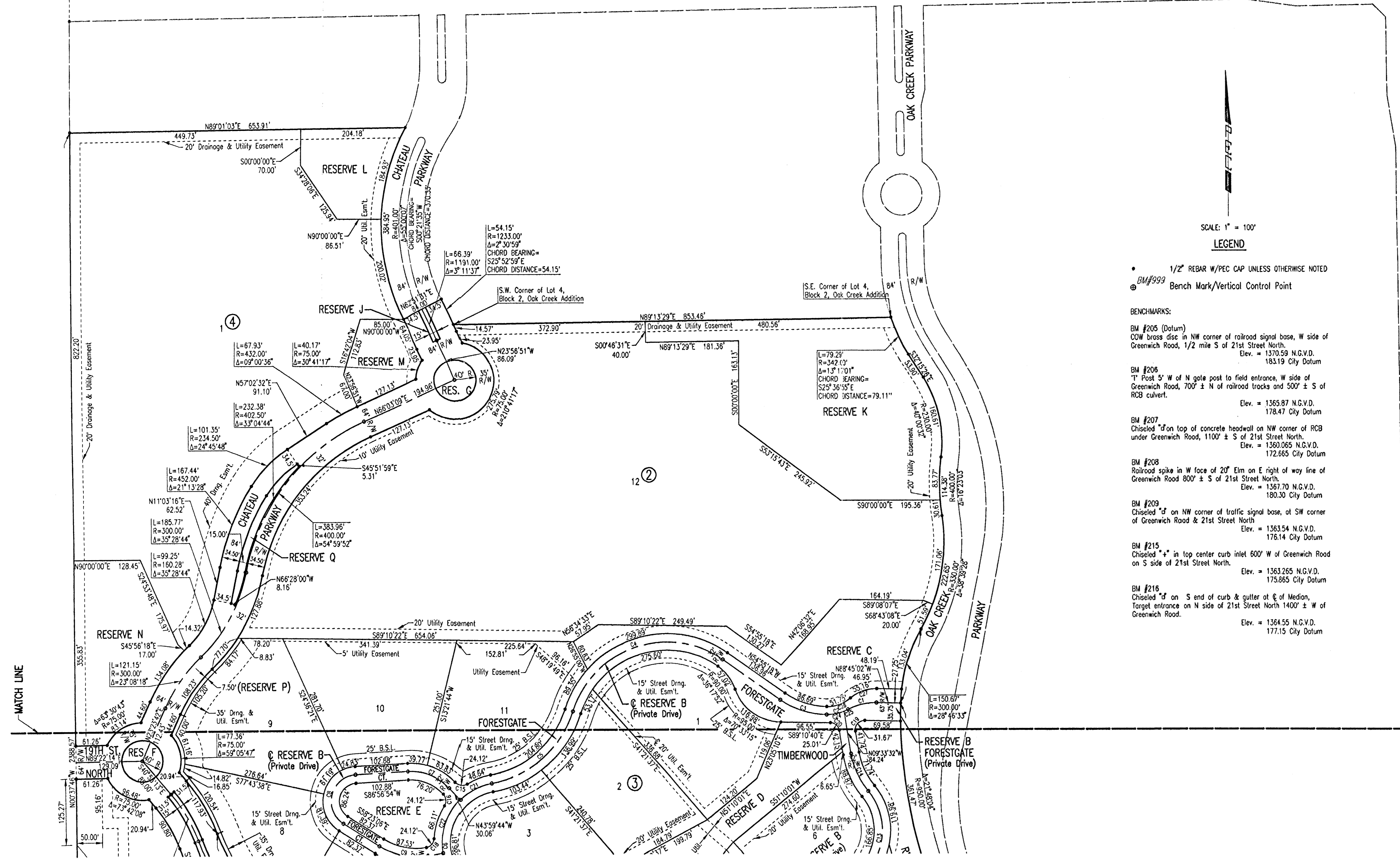
GREENWICH ROAD



- 1/2" REBAR W/PEC CAP UNLESS OTHERWISE NOTED
- ⊕ BM#999 Bench Mark/Vertical Control Point

- BENCHMARKS:**
- BM #205 (Datum)
COW brass disc in NW corner of railroad signal base, W side of Greenwich Road, 1/2 mile S of 21st Street North.
Elev. = 1370.59 N.G.V.D.
183.19 City Datum
 - BM #206
1" Post 5' W of N gate post to field entrance, W side of Greenwich Road, 700' ± N of railroad tracks and 500' ± S of RCB culvert.
Elev. = 1365.87 N.G.V.D.
178.47 City Datum
 - BM #207
Chiseled "d" on top of concrete headwall on NW corner of RCB under Greenwich Road, 1100' ± S of 21st Street North.
Elev. = 1360.065 N.G.V.D.
172.665 City Datum
 - BM #208
Railroad spike in W face of 20' Elm on E right of way line of Greenwich Road 800' ± S of 21st Street North.
Elev. = 1367.70 N.G.V.D.
180.30 City Datum
 - BM #209
Chiseled "d" on NW corner of traffic signal base, at SW corner of Greenwich Road & 21st Street North.
Elev. = 1363.54 N.G.V.D.
176.14 City Datum
 - BM #215
Chiseled "x" in top center curb inlet 600' W of Greenwich Road on S side of 21st Street North.
Elev. = 1363.265 N.G.V.D.
175.865 City Datum
 - BM #216
Chiseled "d" on S end of curb & gutter at @ of Median, Target entrance on N side of 21st Street North 1400' ± W of Greenwich Road.
Elev. = 1364.55 N.G.V.D.
177.15 City Datum

CURVE TABLE			
CURVE	LENGTH	RADIUS	DELTA
C1	57.59'	113.14'	29°09'44"
C2	44.64'	89.00'	28°44'06"
C3	98.26'	161.00'	34°15'23"
C4	359.00'	190.00'	108°15'33"
C5	222.61'	200.00'	63°46'27"
C6	333.40'	114.50'	168°49'54"
C7	89.90'	105.00'	49°03'21"
C8	126.83'	50.00'	145°20'01"
C9	99.01'	138.00'	41°06'35"
C10	97.15'	125.00'	44°31'57"
C11	344.28'	200.00'	98°37'48"
C12	232.72'	800.00'	18°40'01"
C13	193.82'	115.00'	96°33'51"
C14	80.31'	150.00'	30°40'27"
C15	24.12'	18.00'	76°45'52"
C16	24.12'	18.00'	76°45'52"
C17	24.12'	18.00'	76°45'52"
C18	24.12'	18.00'	76°45'52"
C19	31.67'	18.00'	100°48'30"
C20	25.01'	18.00'	79°37'08"
C21	69.12'	114.50'	34°35'21"
C22	110.91'	114.50'	55°29'54"
C23	153.37'	114.50'	76°44'40"
C24	36.50'	89.00'	22°51'09"
C25	9.14'	89.00'	5°52'57"
C26	51.75'	73.00'	40°37'08"
C27	55.16'	77.00'	41°02'45"



MATCH LINE

MATCH LINE