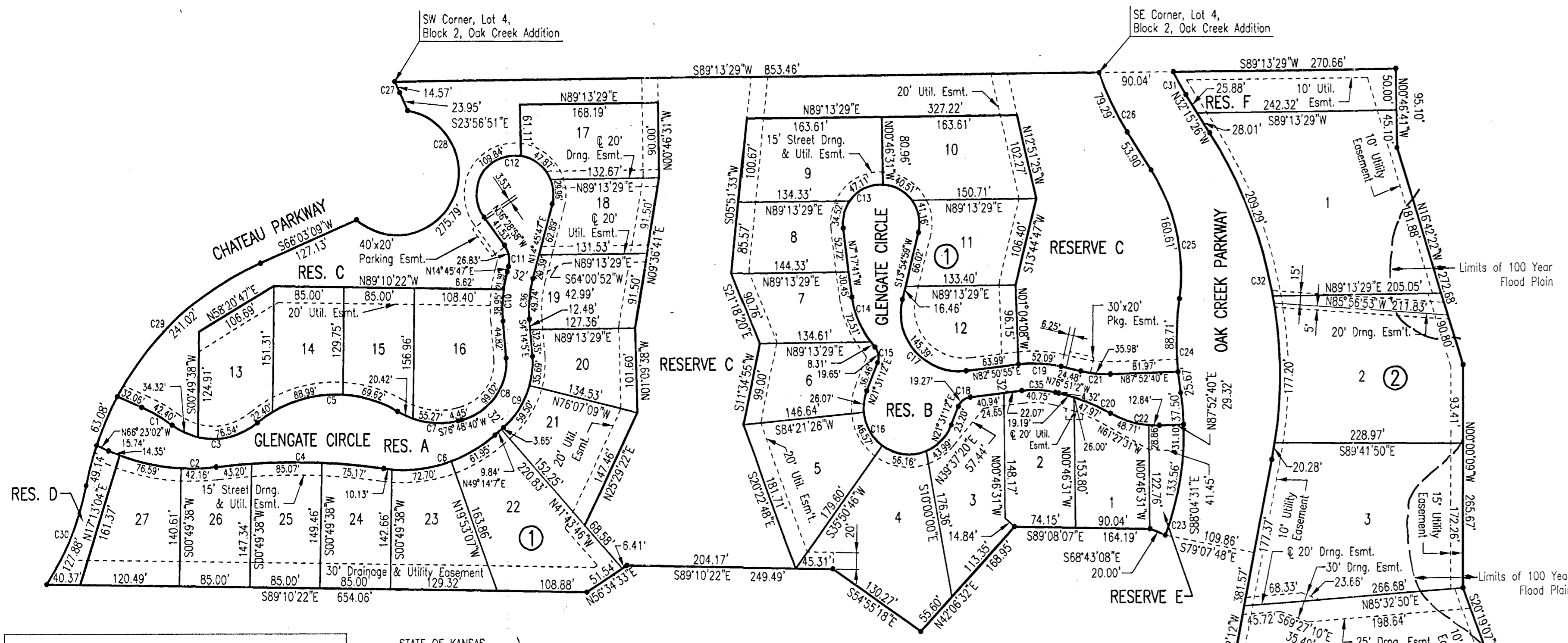


FINAL TRACING REC'D

OAK CREEK 3RD

AN ADDITION TO WICHITA, SEDGWICK COUNTY, KANSAS

12/13/06



SCALE: 1" = 100'

• = 1/2" REBAR W/PEC CAP UNLESS OTHERWISE NOTED

BENCHMARKS

- BM #209 Chiseled 'I' on NW corner of traffic signal base... BM #215 Chiseled '+' in top center curb inlet... BM #216 Chiseled 'J' on S end of curb & gutter...

MINIMUM PAD ELEVATIONS (LOWEST OPENING) SHALL BE AS FOLLOWS:

Table with columns: BLOCK, CITY DATUM, N.G.V.D. for lots 1-27.

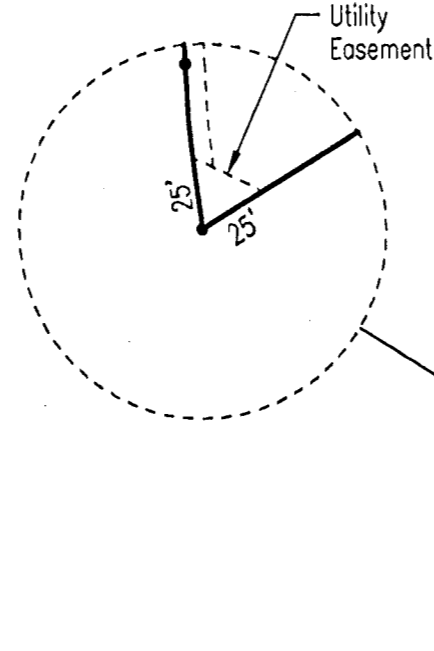
STATE OF KANSAS } SS COUNTY OF SEDGWICK

WE, PROFESSIONAL ENGINEERING CONSULTANTS, P.A., ENGINEERS AND SURVEYORS IN AFORESAID STATE AND COUNTY, DO HEREBY CERTIFY THAT OF THIS 16TH DAY OF OCTOBER, 2006, WE HAVE SURVEYED

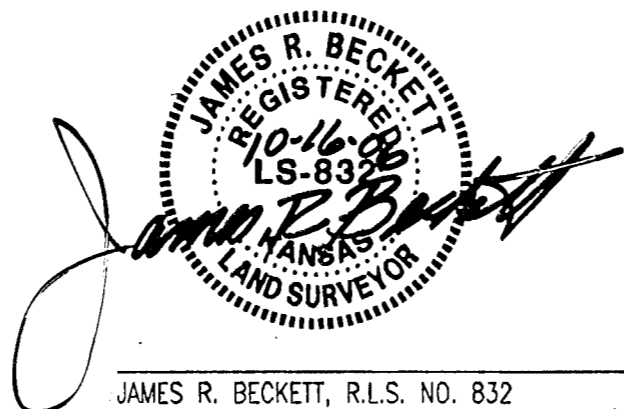
AND PLATTED OAK CREEK 3RD, AN ADDITION TO WICHITA, SEDGWICK COUNTY, KANSAS, INTO LOTS, BLOCKS, AND RESERVES, THE SAME BEING DESCRIBED AS FOLLOWS:

CURVE TABLE

Table with columns: CURVE, RADIUS, DELTA for curves C1 through C36.



ALL PUBLIC EASEMENTS LYING WITHIN THE ABOVE DESCRIBED TRACT OF LAND ARE HEREBY VACATED AND REPLATTED BY VIRTUE OF KSA 12-512(b) AMENDED.



JAMES R. BECKETT, R.L.S. NO. 832 PROFESSIONAL ENGINEERING CONSULTANTS, P.A.

THIS ADDITION IS SUBJECT TO THE CONDITIONS OF OAK CREEK COMMUNITY UNIT PLAN (CUP 2004-09, DP-274).

EASEMENTS FOR THE CONSTRUCTION AND MAINTENANCE OF PUBLIC UTILITIES ARE HEREBY GRANTED.

THE PARKING EASEMENTS ARE GRANTED FOR RESIDENTIAL PARKING ONLY AND NO OBSTRUCTIONS SHALL BE CONSTRUCTED OR PLACED WITHIN THE EASEMENTS.

RESERVES "A" AND "B" ARE HEREBY PLATTED FOR PRIVATE DRIVES, ENTRY MONUMENTS, GATES, DRAINAGE, LANDSCAPING, SIGNAGE, PARKING AND UTILITIES. RESERVES "C" AND "D" ARE HEREBY PLATTED FOR BERMS, WALLS, FENCES, ENTRY MONUMENTS, DRAINAGE, PONDS, WATER FEATURES, LANDSCAPING, RECREATIONAL USES, SIDEWALKS, AND UTILITIES. RESERVE "E" IS HEREBY PLATTED FOR ENTRY MONUMENTS, GATES, LANDSCAPING, DRAINAGE, RECREATIONAL USES, AND UTILITIES. RESERVE "F" IS HEREBY PLATTED FOR LANDSCAPING, DRAINAGE, SIDEWALKS, AND UTILITIES. RESERVES "A" THROUGH "F" SHALL BE OWNED AND MAINTAINED BY AN OWNER'S ASSOCIATION TO BE FORMED WITHIN OAK CREEK 3RD.

A DRAINAGE PLAN HAS BEEN APPROVED FOR THIS PLAT. ALL DRAINAGE EASEMENTS, RIGHTS-OF-WAY, OR RESERVES SHALL REMAIN AT ESTABLISHED GRADES AND UNOBSTRUCTED TO ALLOW FOR THE CONVEYANCE OF STORM WATER, UNLESS MODIFIED WITH THE APPROVAL OF THE CITY ENGINEER.

KNOW ALL MEN BY THESE PRESENTS THAT WE, THE UNDERSIGNED PROPERTY OWNERS OF THE LAND AS ABOVE SET FORTH IN THE SURVEYOR'S CERTIFICATE, HAVE CAUSED THE LAND TO BE SURVEYED AND PLATTED INTO LOTS, BLOCKS, STREETS, AND RESERVES; THE SAME TO BE KNOWN AS OAK CREEK 3RD, AN ADDITION TO WICHITA, SEDGWICK COUNTY, KANSAS.

OWNERS:

SLAWSON COMMERCIAL PROPERTIES, L.L.C.

George Sherman, Vice President

STATE OF KANSAS } SS COUNTY OF SEDGWICK

THIS INSTRUMENT WAS ACKNOWLEDGED BEFORE ME ON THIS OCT. 18 DAY OF 2006, BY GEORGE SHERMAN, VICE PRESIDENT OF SLAWSON COMMERCIAL PROPERTIES, L.L.C.

Kent G. Voth, Notary Public

MY APPOINTMENT EXPIRES: 9/2/07

WE, INTRUST BANK, N.A., HOLDER OF A MORTGAGE ON THE ABOVE DESCRIBED PROPERTY, DO HEREBY CONSENT TO THE PLATTING OF OAK CREEK 3RD, AN ADDITION TO WICHITA, SEDGWICK COUNTY, KANSAS.

Roger G. Eastwood, Senior Vice President

STATE OF KANSAS } SS COUNTY OF SEDGWICK

THIS INSTRUMENT WAS ACKNOWLEDGED BEFORE ME ON THIS 18th DAY OF October, 2006, BY ROGER G. EASTWOOD, SENIOR VICE PRESIDENT OF INTRUST BANK.

Melinda A. Spies, Notary Public

MY APPOINTMENT EXPIRES: 2/18/07

THIS PLAT OF OAK CREEK 3RD HAS BEEN SUBMITTED TO AND APPROVED BY THE WICHITA-SEGWICK COUNTY METROPOLITAN AREA PLANNING COMMISSION, WICHITA, KANSAS.

DATED THIS 17th DAY OF October, 2006.

WICHITA-SEGWICK COUNTY METROPOLITAN AREA PLANNING COMMISSION

Darrell A. Downing, Chair

John L. Schlegel, Secretary

REVIEWED IN ACCORDANCE WITH K.S.A. 58-2005 ON THIS 26th DAY OF October, 2006.



TRICIA L. ROBELLO, L.S. #1246 DEPUTY COUNTY SURVEYOR SEDGWICK COUNTY KANSAS

THIS PLAT IS APPROVED AND ALL DEDICATIONS SHOWN HEREON, IF ANY ARE ACCEPTED BY THE CITY COUNCIL OF THE CITY OF WICHITA, KANSAS, THIS DAY OF Dec, 2006.

Carlos Mayans, Mayor

Karen Sublett, City Clerk

ENTERED ON TRANSFER RECORD THIS DAY OF 2006.

DONALD BRACE, County Clerk

THIS IS TO CERTIFY THAT THIS INSTRUMENT WAS FILED FOR RECORD IN THE REGISTER OF DEEDS OFFICE AT M., ON THE DAY OF 2006.

BILL MEEK, Register of Deeds

TONYA BUCKINGHAM, Deputy

Vertical text on the left edge: Saved 10-16-2006 3:07:26 PM by ALE... Plot Scale 1:100 10-16-2006 3:08:07 PM by ALE... C:\2004\04115\00A\LD\GWA\04115-00A-FINAL

Vertical text on the right edge: OAK CREEK 3RD ADDITION