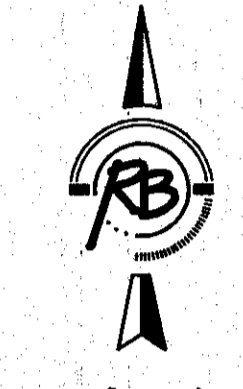
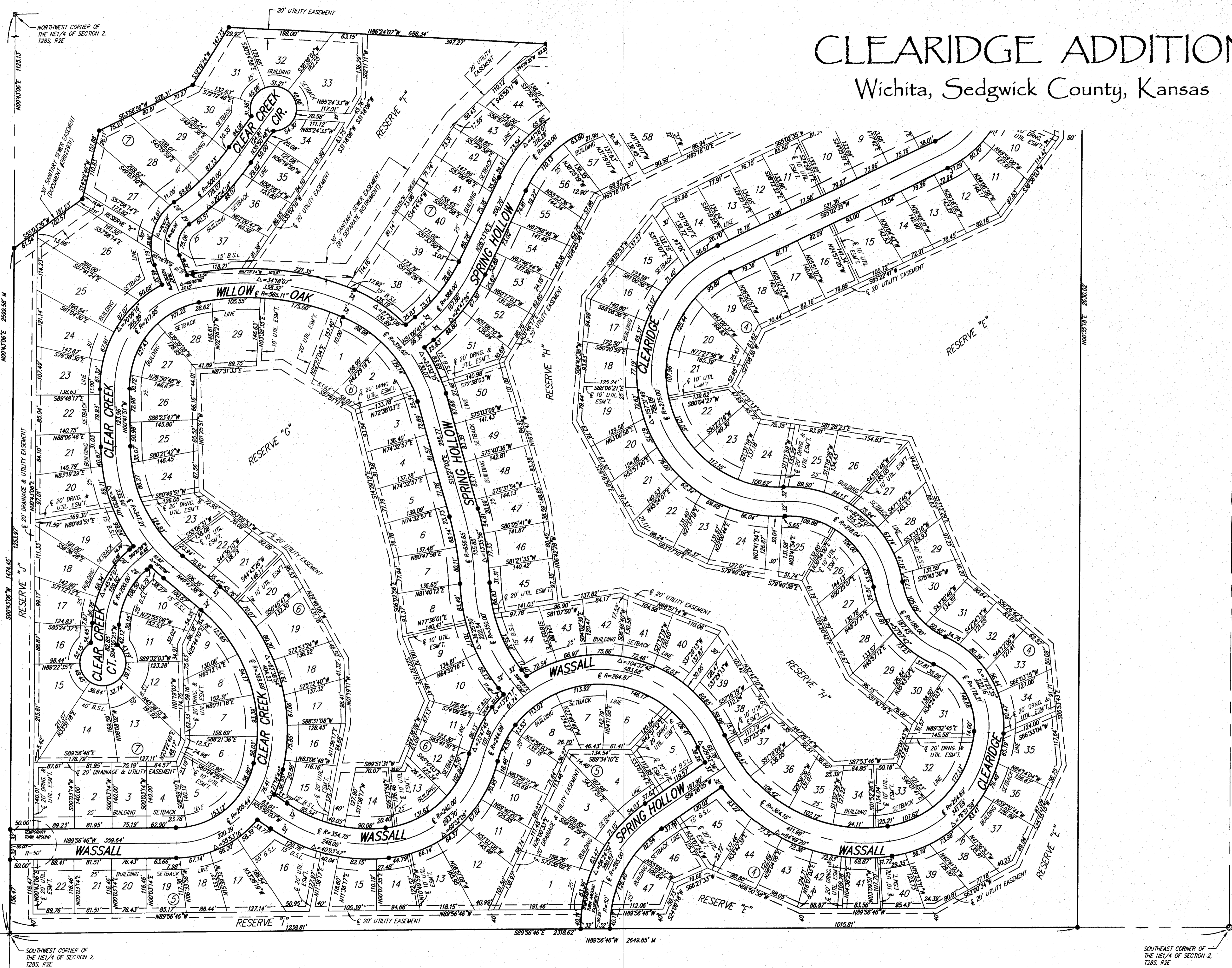


CLEARIDGE ADDITION

Wichita, Sedgwick County, Kansas



1" = 100'
M = Measured

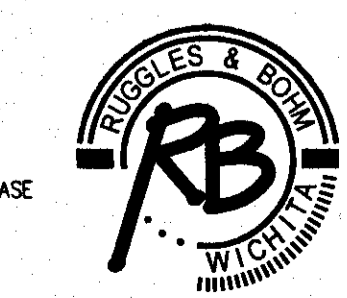
- SURVEY MARKER LEGEND**
- 3/4" IRON PIPE (FOUND, ORIGIN UNKNOWN)
 - ⊙ 1/2" REBAR W/L.D. HIGH CAP (FOUND)
 - ⊗ 5/8" CAPPED REBAR (FOUND, ORIGIN UNKNOWN)
 - 5/8" REBAR W/RUGGLES & BOHM CAP (SET)

BENCH MARK: SRB BRASS DISC 1008.17' E & 53.63' N OF THE CENTERLINE INTERSECTION PRINCE AVENUE & 12TH STREET EAST
ELEVATION = 1336.63 (NGVD29)

BENCH MARK: CHISELED SQUARE ON THE TOP OF A CONCRETE HEADWALL AT THE NORTHWEST CORNER OF A BRIDGE, 981 FEET NORTH AND 13 FEET WEST OF THE SOUTHWEST CORNER OF SECTION 36, T28S, R2E
ELEVATION = 1308.29 (NGVD29)

BLOCK	LOT NO.	ELEVATION (NGVD29)		
4	13, 14, 15, 16, 17, 18, 19, 20, 21, 22, 23, 24, 25, 26, 27, 28	1317.0		
	6	1, 2, 3, 4, 5, 21, 22, 23, 24, 25, 26, 27, 28, 29	1320.0	
		6	6, 7, 8, 9, 10, 11, 12, 13, 14, 15, 16, 17, 18, 19, 20	1324.0
			7	28, 29, 30
7	31	1317.0		
	32	1315.0		
7	33, 34, 35, 36, 37, 28, 38, 40, 41, 42, 43, 44	1314.7		
	7	45, 46, 47, 48, 49, 50	1314.4	
7	51, 52, 53	1314.2		

SOUTHWEST CORNER OF THE NE 1/4 OF SECTION 2, T28S, R2E



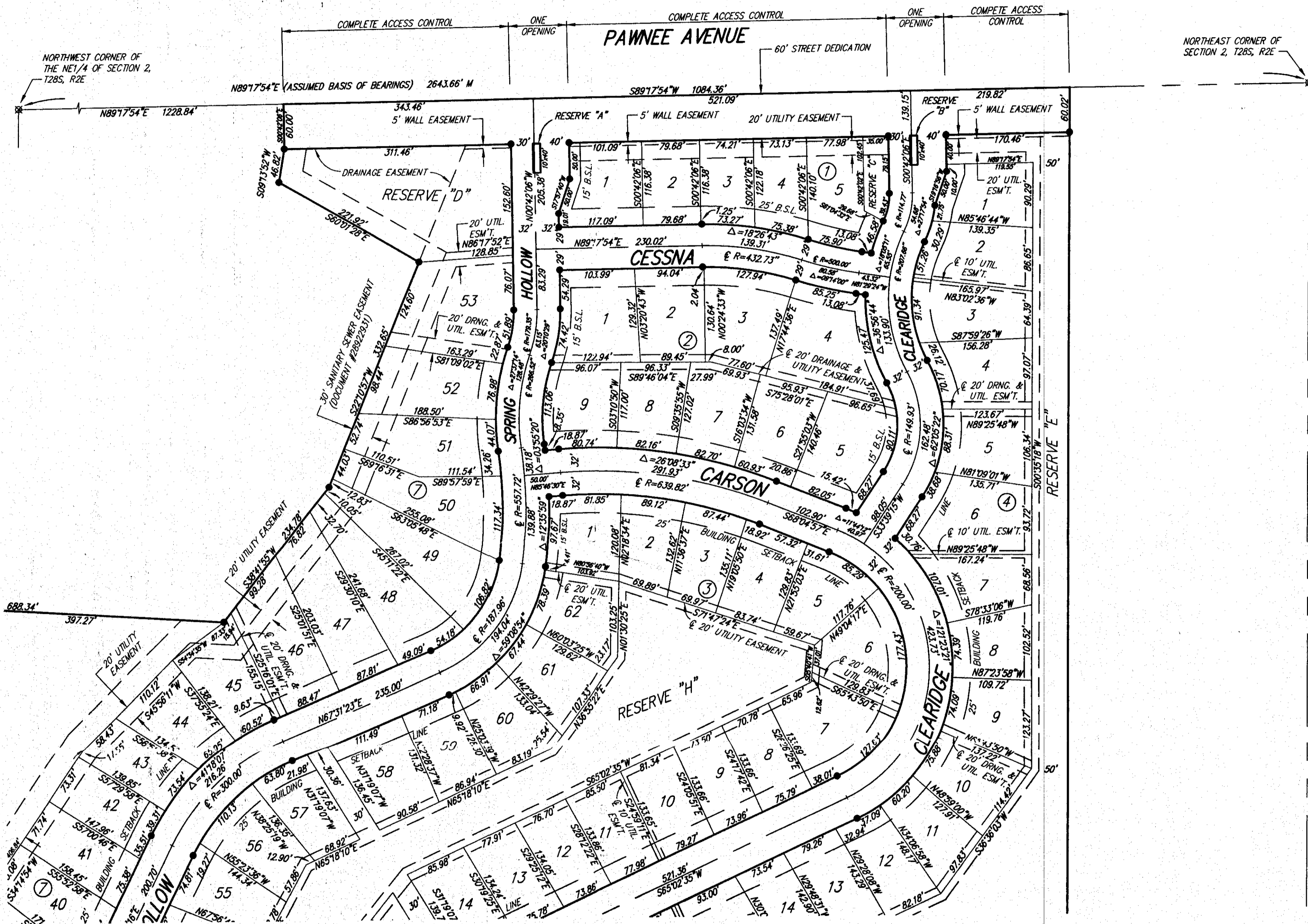
Ruggles & Bohm, P.A.
Engineering, Surveying, Land Planning

924 North Main (316) 264-8008
Wichita, Kansas 67203 (316) 264-4621 fax
www.rbkansas.com E-mail: info@rbkansas.com

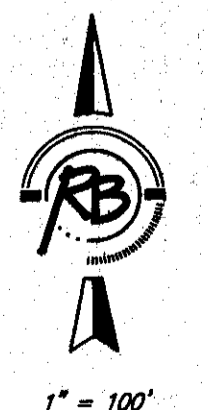
DWG FILE: SURVEY BASE
PROJECT NO. 3018P
SEPTEMBER 15, 2008

CLEARIDGE ADDITION

Wichita, Sedgwick County, Kansas



BLOCK	LOT NO.	ELEVATION (NGVD29)
4	13, 14, 15, 16, 17, 18, 19, 20, 21, 22, 23, 24, 25, 26, 27, 28	1317.0
6	1, 2, 3, 4, 5, 21, 22, 23, 24, 25, 26, 27, 28, 29	1320.0
6	6, 7, 8, 9, 10, 11, 12, 13, 14, 15, 16, 17, 18, 19, 20	1324.0
7	28, 29, 30	1319.0
7	31	1317.0
7	32	1315.0
7	33, 34, 35, 36, 37, 28, 38, 40, 41, 42, 43, 44	1314.7
7	45, 46, 47, 48, 49, 50	1314.4
7	51, 52, 53	1314.2



M = Measured

SURVEY MARKER LEGEND

- 3/4" IRON PIPE (FOUND, ORIGIN UNKNOWN)
- ⊙ 1/2" REBAR W/L.D. HIGH CAP (FOUND)
- ⊗ 5/8" CAPPED REBAR (FOUND, ORIGIN UNKNOWN)
- 5/8" REBAR W/RUGGLES & BOHM CAP (SET)

BENCH MARK: SRB BRASS DISC 1008.17' E & 55.63' N OF THE CENTERLINE INTERSECTION PAWNEE AVENUE & 127TH STREET EAST ELEVATION = 1336.63 (NGVD29)

BENCH MARK: CHISELED SQUARE ON THE TOP OF A CONCRETE HEADWALL AT THE NORTHWEST CORNER OF A BRIDGE, 981 FEET NORTH AND 13 FEET WEST OF THE SOUTHWEST CORNER OF SECTION 36, T27S, R2E ELEVATION = 1308.29 (NGVD29)

State of Kansas) SS
Sedgwick County)

We, Ruggles & Bohm, P.A., Land Surveyors in aforesaid county and state, do hereby certify that, under the supervision of the undersigned, we have surveyed and platted "CLEARIDGE ADDITION", Wichita, Sedgwick County, Kansas, and that the accompanying plat is a true and correct exhibit of the property surveyed, described as follows:

The Northeast Quarter of Section 2, Township 28 South, Range 2 East of the Sixth Principal Meridian, Sedgwick County, Kansas, EXCEPT the east half of the east half of the east half of said quarter, AND EXCEPT that part described as beginning at the Northeast corner of said Northeast Quarter; thence N89°17'54"E along the north line of said Northeast Quarter, 1228.84 feet; thence S00°42'06"E, 60.00'; thence S09°13'52"W, 46.82 feet; thence S60°01'28"E, 221.92 feet; thence S22°10'57"W, 332.65 feet; thence S38°41'55"W, 234.78 feet; thence N86°24'07"W, 688.34 feet; thence S32°19'24"W, 147.73 feet; thence S63°58'56"W, 226.31 feet; thence S14°29'46"W, 151.88 feet; thence S55°03'36"W, 181.23 feet to the west line of said Northeast Quarter; thence N00°43'06"E along said west line, 1125.13 feet to the place of beginning.

All public easements and dedications are hereby vacated by virtue of K.S.A. 12-512(b).

Ruggles & Bohm, P.A.

Land Surveyor
Thomas C. Ruggles

Know all men by these presents that we, the undersigned, have caused the land described in the surveyor's certificate to be platted into Lots, Blocks, Reserves and Streets, to be known as "CLEARIDGE ADDITION", Wichita, Sedgwick County, Kansas. Access Controls as indicated are hereby granted to the appropriate governing body. The streets are hereby dedicated to and for the use of the public. Utility Easements are hereby granted for the construction and maintenance of all public utilities. Drainage Easements are hereby granted to the public as indicated for drainage purposes. Reserves "A" and "B" are hereby reserved for irrigation, and entry features. Reserves "C" and "D" are hereby reserved for irrigation, walls, walks, lighting, signage, landscaping, berms, drainage, and utilities confined to easements. Reserves "I" and "J" are hereby reserved for irrigation, walls, walks, lighting berms, drainage, and utilities confined to easements. Reserves "E", "F", "G" and "H" are hereby reserved for irrigation, walls, gazebos, playground structures, picnic areas/ tables with canopies, walks, lighting, landscaping, berms, lakes, drainage, drainage structures, and utilities confined to easements. The Reserves are to be owned and maintained by the Home Owners Association for the addition. The temporary turnaround easements on Spring Hollow and Wassall are hereby granted for the use of the public, and will expire upon extension of the street beyond the limits of this plat. A drainage plan has been developed for this plat; the property shall remain at established grades, or as modified with the approval of the City Engineer, and unobstructed to allow for the conveyance of storm water.

Stephen G. Miller
Sally E. Miller

State of Kansas) SS
Sedgwick County)

The foregoing instrument acknowledged before me, this _____ day of _____, 2008, by Stephen G. Miller and Sally E. Miller.

Notary Public

My appointment expires _____

We the undersigned, holders of a mortgage on a portion of the above described property, do hereby consent to this plat of "CLEARIDGE ADDITION" Wichita, Sedgwick County, Kansas.

Garden Plain State Bank
Patrick F. Walden
President

State of Kansas) SS
Sedgwick County)

The foregoing instrument acknowledged before me this _____ day of _____, 2008, by Patrick F. Walden, President of Garden Plain State Bank on behalf of the Bank.

Notary Public

My appointment expires _____

This plat of "CLEARIDGE ADDITION", Wichita, Sedgwick County, Kansas, has been submitted to and approved by the Wichita-Sedgwick County Metropolitan Area Planning Commission, Wichita, Kansas.

Dated this _____ day of _____, 2008.

Wichita-Sedgwick County Metropolitan Area Planning Commission
Chair
M.S. Mitchell
Secretary
John L. Schlegel

This plat approved and all dedications shown hereon accepted by the City Council of the City of Wichita, Kansas, this _____ day of _____, 2008.

At the Direction of the City Council
Mayor
Carl Brewer
City Clerk
Karen Sublett

Reviewed in accordance with K.S.A. 58-2005 on this _____ day of _____, 2008.

Deputy County Surveyor
Sedgwick County Kansas
Tricia L. Robello, LS #1246

Entered on transfer record this _____ day of _____, 2008.

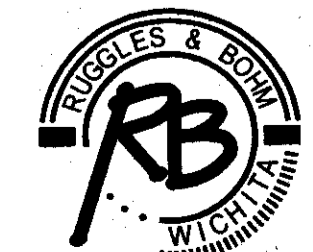
County Clerk
Don Brace

State of Kansas) SS
Sedgwick County)

This is to certify that this plat has been filed for record in the office of the Register of Deeds, this _____ day of _____, 2008, at _____ o'clock _____ M, and is duly recorded.

Register of Deeds
Bill Meek
Deputy
Tonya Buckingham

DWG FILE: SURVEY BASE
PROJECT NO. 3018P
SEPTEMBER 15, 2008



Ruggles & Bohm, P.A.
Engineering, Surveying, Land Planning
924 North Main
Wichita, Kansas 67203
www.rbkansas.com
(316) 264-8008
(316) 264-4821 fax
E-mail: info@rbkansas.com