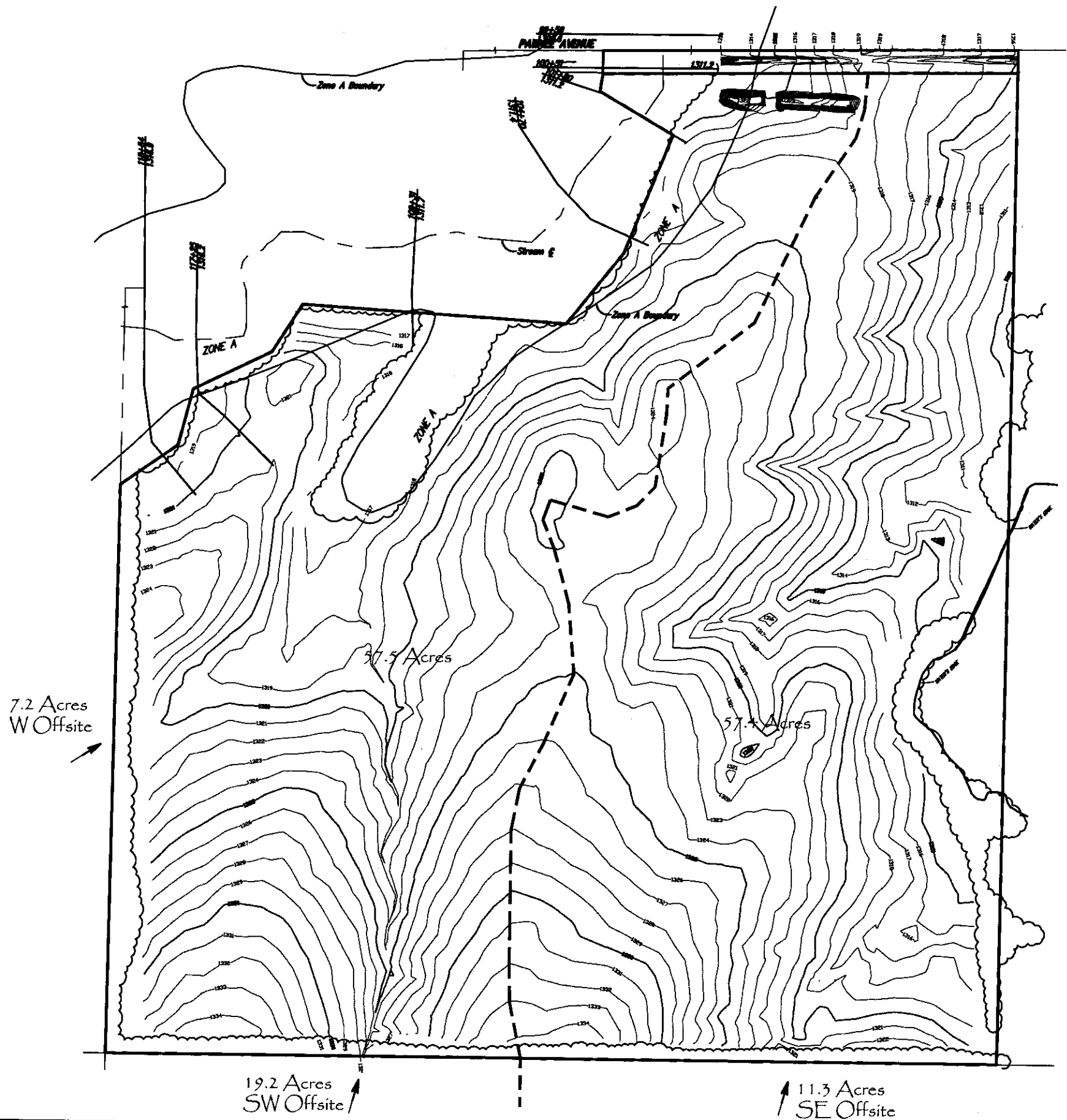
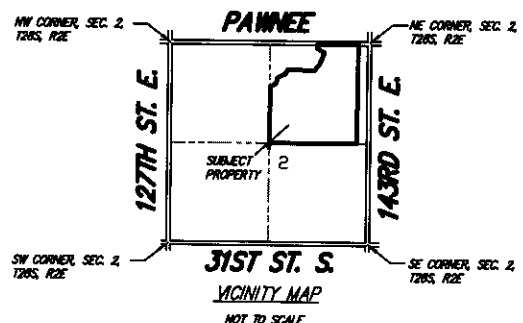


Existing Drainage
CLEARIDGE ADDITION
 An Addition to Sedgwick County, Kansas



BENCH MARK: SRB BRASS DISC 1008.17' E.
 & 55.63' N. OF THE CENTERLINE INTERSECTION
 PANNEE AVENUE & 127TH STREET EAST
 ELEVATION = 1336.63 (NGVD29)

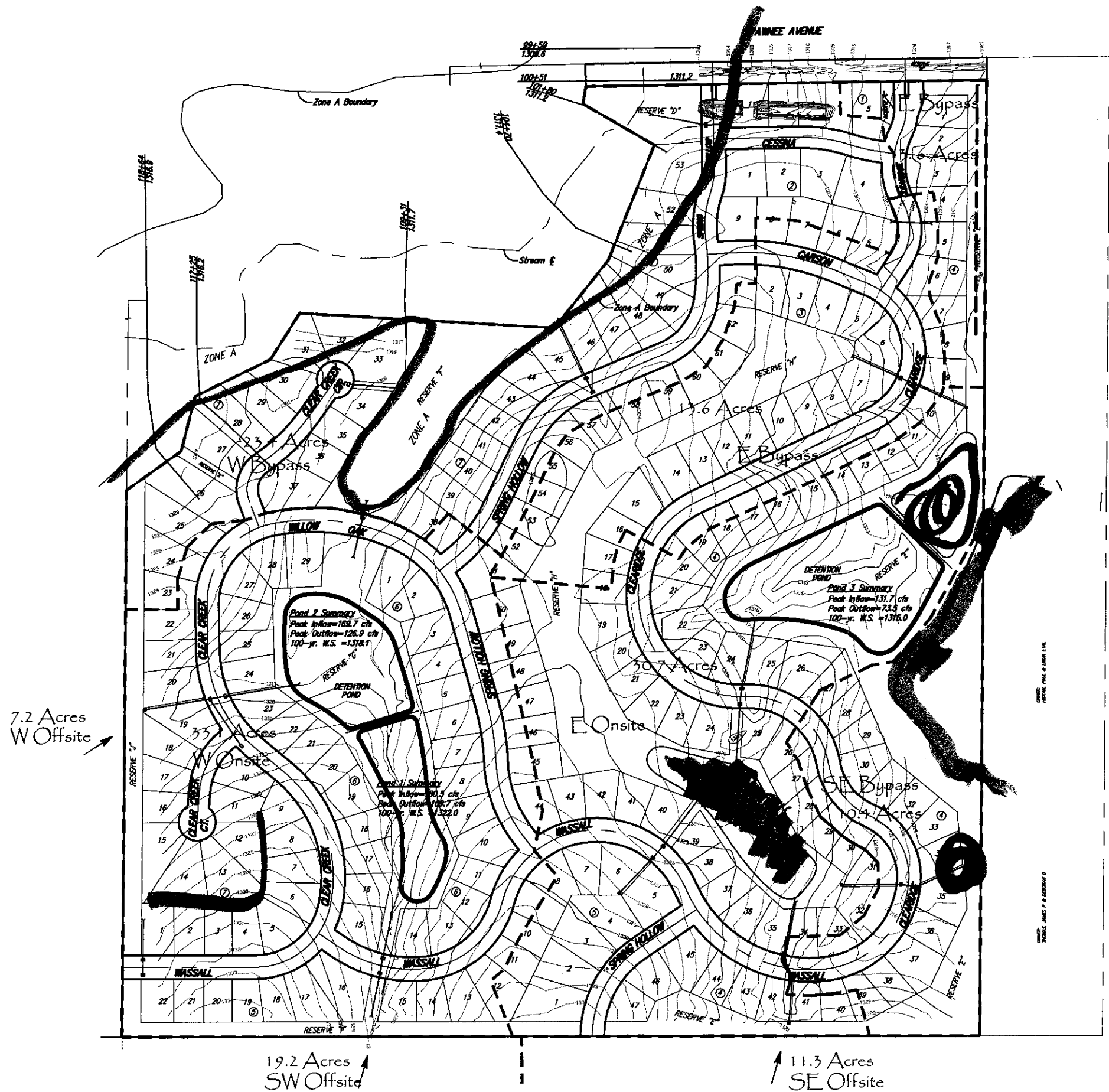
BENCH MARK: CHISELED SQUARE ON THE TOP
 OF A CONCRETE HEADWALL AT THE NORTHWEST CORNER
 OF A BRIDGE, 981 FEET NORTH AND 13 FEET WEST OF
 THE SOUTHWEST CORNER OF SECTION 36, T27S, R2E
 ELEVATION = 1308.29 (NGVD29)



Ruggles & Bohm, P.A.
 Engineering, Surveying, Land Planning
 924 North Main (316) 264-8008
 Wichita, Kansas 67203 (316) 264-4621 fax
 www.rbkansas.com E-mail: info@rbkansas.com

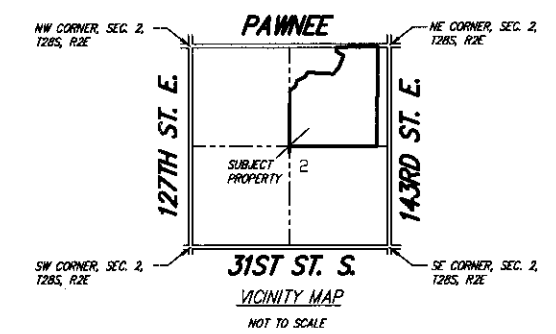
Proposed Drainage CLEARIDGE ADDITION

An Addition to Sedgwick County, Kansas



BENCH MARK: S&B BRASS DISC 1008.17' E. & 55.63' N. OF THE CENTERLINE INTERSECTION PAWNEE AVENUE & 127TH STREET EAST ELEVATION = 1336.63 (NGVD29)

BENCH MARK: CHISELED SQUARE ON THE TOP OF A CONCRETE HEADWALL AT THE NORTHWEST CORNER OF A BRIDGE, 981 FEET NORTH AND 13 FEET WEST OF THE SOUTHWEST CORNER OF SECTION 36, T27S, R2E ELEVATION = 1308.29 (NGVD29)



Ruggles & Bohm, P.A.
Engineering, Surveying, Land Planning

924 North Main
Wichita, Kansas 67203
www.rbkansas.com

(316) 264-0008
(316) 264-4621 fax
E-mail: info@rbkansas.com

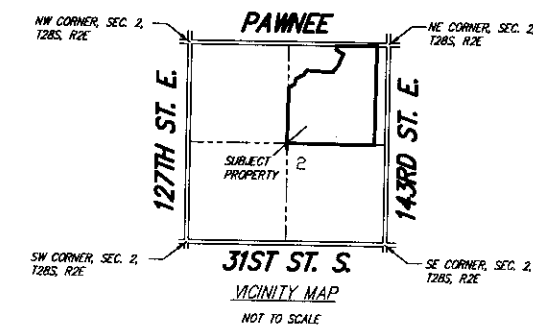
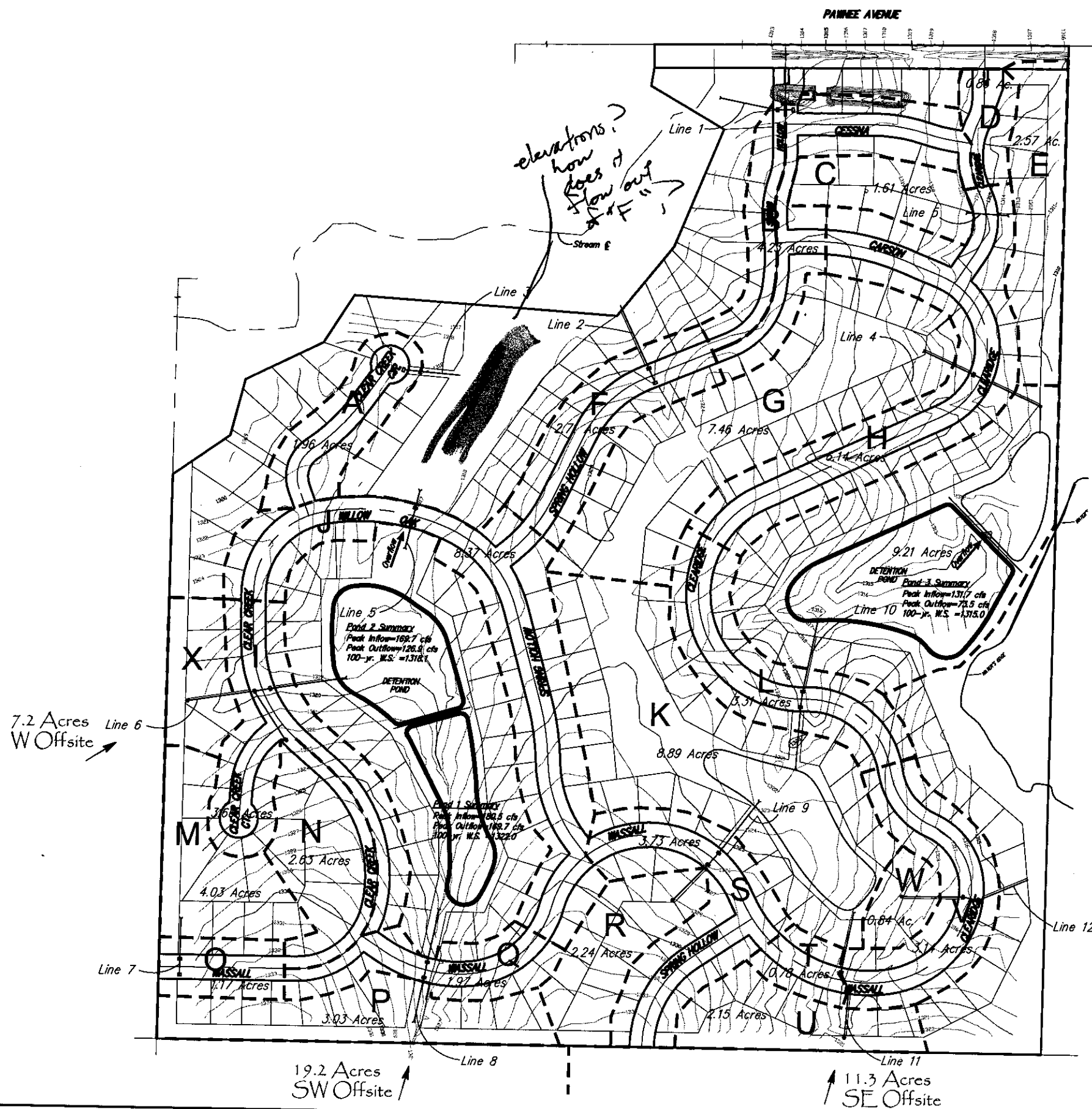
Proposed Drainage CLEARIDGE ADDITION

An Addition to Sedgwick County, Kansas



SCALE
1" = 150'

NODE	AREA	TIC	C2	R	C100	I100	Q2	Q100
A	1.96	15	0.49	3.83	0.70	7.37	3.7	10.1
B	4.23	15	0.49	3.83	0.70	7.37	7.9	21.8
C	1.61	20	0.28	3.33	0.60	6.53	1.5	6.3
D	0.86	15	0.49	3.83	0.70	7.37	1.6	4.4
E	2.57	15	0.49	3.83	0.70	7.37	5.1	14.0
F	2.71	15	0.28	3.83	0.60	7.37	2.8	11.4
G	7.46	31	0.28	2.62	0.60	5.32	5.5	23.8
H	6.41	15	0.49	3.83	0.70	7.37	12.0	33.1
J	3.66	15	0.49	3.83	0.70	7.37	8.9	18.9
K	8.89	28	0.28	2.78	0.60	6.26	13.0	38.7
L	3.31	15	0.49	3.83	0.70	7.37	8.2	17.1
M	4.03	22	0.28	3.17	0.60	6.26	3.6	15.1
N	2.63	15	0.28	3.51	0.60	6.84	2.6	10.8
O	1.17	15	0.49	3.83	0.70	7.37	2.2	6.0
P	3.03	23	0.28	3.10	0.60	6.13	2.6	11.1
Q	1.97	15	0.49	3.83	0.70	7.37	3.7	10.2
R	2.24	19	0.28	3.42	0.60	6.66	2.1	9.0
S	3.73	15	0.49	3.83	0.70	7.37	7.0	19.2
T	0.78	15	0.49	3.83	0.70	7.37	1.5	4.0
U	2.15	15	0.28	3.83	0.60	7.37	2.3	9.5
V	3.14	15	0.49	3.83	0.70	7.37	5.9	16.2
W	0.84	15	0.28	3.83	0.60	7.37	0.8	3.7



BENCH MARK: SRR BRASS DISC 100B.17' E & 55.63' N. OF THE CENTERLINE INTERSECTION PANNEE AVENUE & 127TH STREET EAST ELEVATION = 1336.63 (NGVD29)

BENCH MARK: CHISELED SQUARE ON THE TOP OF A CONCRETE HEADWALL AT THE NORTHWEST CORNER OF A BRIDGE, 981 FEET NORTH AND 13 FEET WEST OF THE SOUTHWEST CORNER OF SECTION 36, T22S, R2E ELEVATION = 1308.29 (NGVD29)



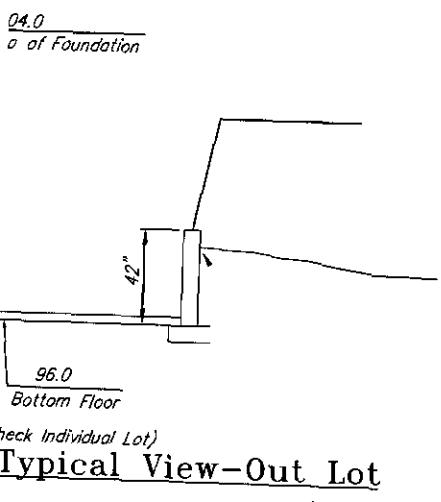
Ruggles & Bohm, P.A.
Engineering, Surveying, Land Planning

924 North Main
Wichita, Kansas 67203
www.rbkansas.com

(316) 264-8008
(316) 264-4821 fax
E-mail: info@rbkansas.com

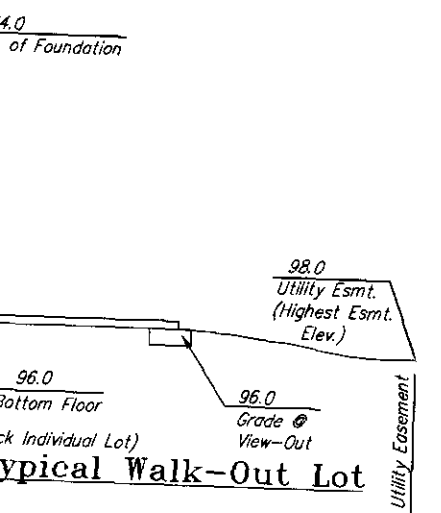
CLEARIDGE ADDITION

Bottom Floor
(Check Individual Lot)
Typical Full Basement



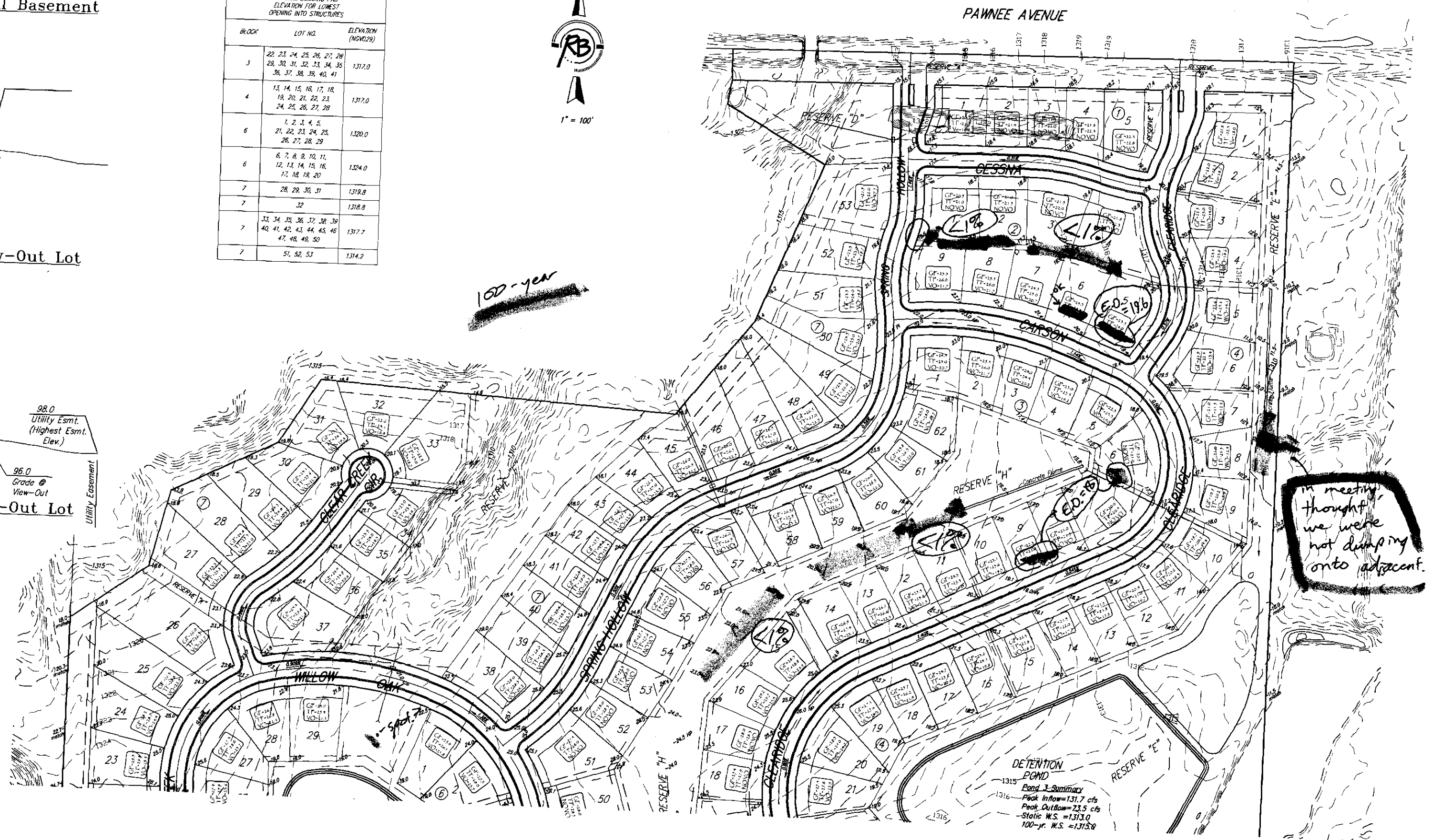
MINIMUM BUILDING PAD ELEVATION FOR LOWEST OPENING INTO STRUCTURES

BLOCK	LOT NO.	ELEVATION (MGVD29)
3	22, 23, 24, 25, 26, 27, 28, 29, 30, 31, 32, 33, 34, 35, 36, 37, 38, 39, 40, 41	1317.0
4	13, 14, 15, 16, 17, 18, 19, 20, 21, 22, 23, 24, 25, 26, 27, 28	1317.0
6	1, 2, 3, 4, 5, 21, 22, 23, 24, 25, 26, 27, 28, 29	1320.0
6	6, 7, 8, 9, 10, 11, 12, 13, 14, 15, 16, 17, 18, 19, 20	1324.0
7	28, 29, 30, 31	1319.8
7	32	1318.8
7	33, 34, 35, 36, 37, 38, 39, 40, 41, 42, 43, 44, 45, 46, 47, 48, 49, 50	1317.7
7	51, 52, 53	1314.2

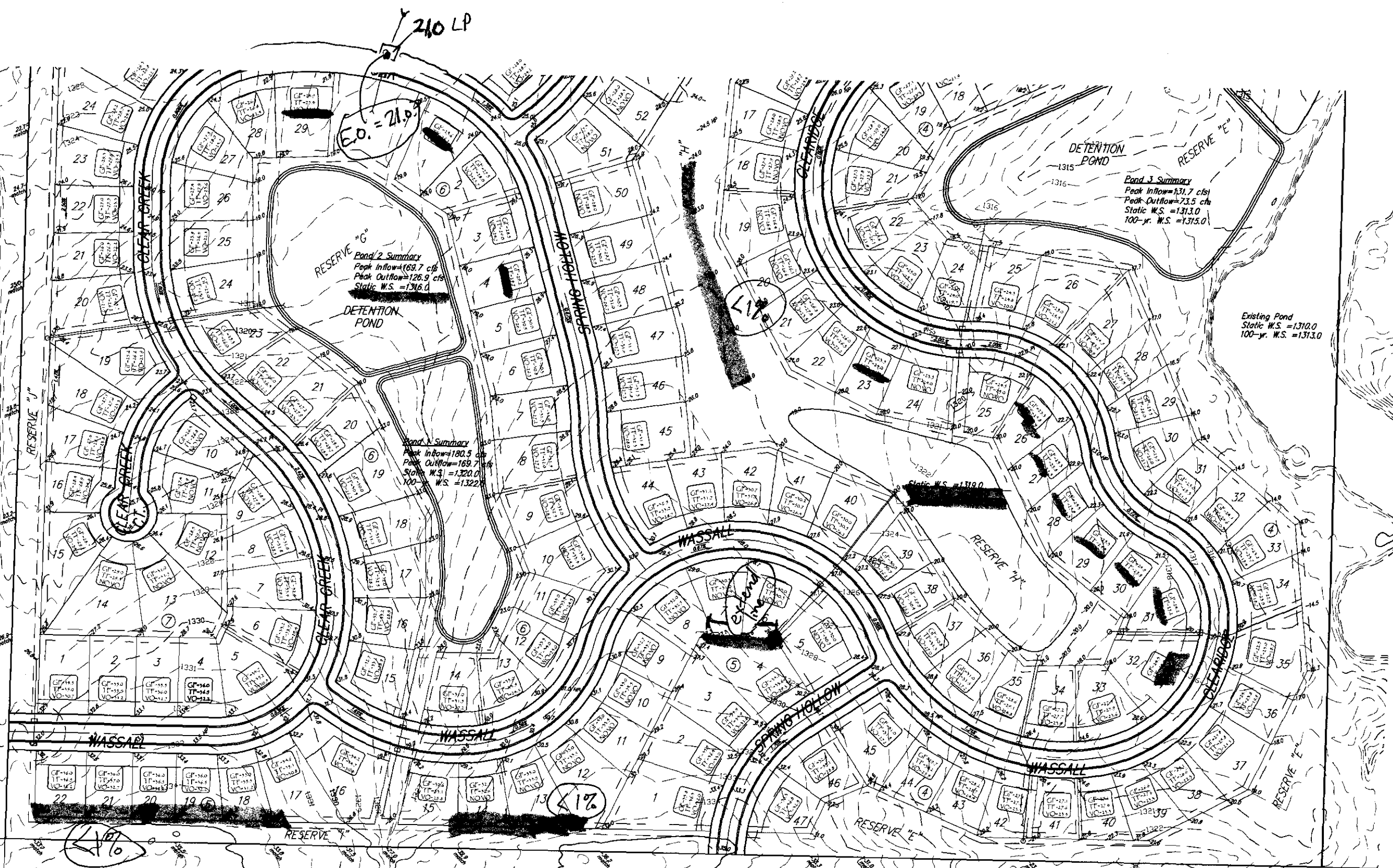


NE CORNER, SEC. 2, T28S, R2E
SE CORNER, SEC. 2, T28S, R2E

100-year



DETENTION POND
Pond 3 Summary
Peak Inflow = 131.7 cfs
Peak Outflow = 23.5 cfs
Static W.S. = 1313.0
100-yr. W.S. = 1315.8



210 LP
E.O. = 21.9

RESERVE "6"
Pond 2 Summary
Peak Inflow=169.7 cfs
Peak Outflow=126.9 cfs
Static W.S. = 1316.0

Pond 4 Summary
Peak Inflow=180.5 cfs
Peak Outflow=169.7 cfs
Static W.S. = 1320.0
100-yr. W.S. = 1322.0

Pond 3 Summary
Peak Inflow=131.7 cfs
Peak Outflow=73.5 cfs
Static W.S. = 1313.0
100-yr. W.S. = 1315.0

Existing Pond
Static W.S. = 1310.0
100-yr. W.S. = 1313.0



1" = 100'

MINIMUM BUILDING PAD ELEVATION FOR LOWEST OPENING INTO STRUCTURES		
BLOCK	LOT NO.	ELEVATION (MGVD29)
3	22, 23, 24, 25, 26, 27, 28, 29, 30, 31, 32, 33, 34, 35, 36, 37, 38, 39, 40, 41	1322.0
4	13, 14, 15, 16, 17, 18, 19, 20, 21, 22, 23, 24, 25, 26, 27, 28	1317.0
6	1, 2, 3, 4, 5, 21, 22, 23, 24, 25, 26, 27, 28, 29	1320.0
6	6, 7, 8, 9, 10, 11, 12, 13, 14, 15, 16, 17, 18, 19, 20	1324.0
7	28, 29, 30, 31	1319.8
7	32	1318.9
7	33, 34, 35, 36, 37, 38, 39, 40, 41, 42, 43, 44, 45, 46, 47, 48, 49, 50	1317.7
7	51, 52, 53	1314.2

