

ONE-STEP FINAL PLAT

COX MACHINE 3RD ADDITION

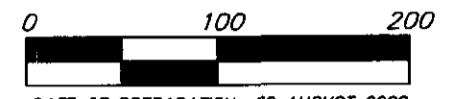
WICHITA, SEDGWICK COUNTY, KANSAS

TO: 1-82 FROM: 1-101
PUBLIC WORKS

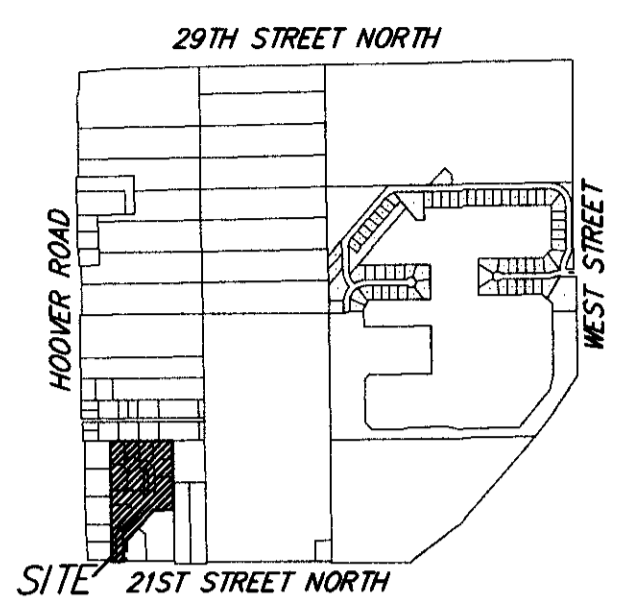
BENCHMARK:
City Disc - 48.5' W & 28' N of E of
21st Street North & Hoover St.
Elev. = 1316.37 NGVD29 (130.97 City Datum)

- PP □ = Power Pole
- Sign □ = Sign
- GM □ = Gas Meter
- ATI Pad □ = ATI Pedestal
- MB □ = Mail Box
- PM □ = Pipeline Marker
- = #4 REBAR W/ "BAUGHMAN" CAP (SET)
- = #5 REBAR W/ "SRB" CAP (FOUND)
- ⊠ = #6 REBAR (FOUND)
- = CONCRETE MONUMENT W/ CROSS (FOUND)
- △ = RAILROAD SPIKE W/ CROSS (FOUND)

(M) = MEASURED
(P) = PLATTED
(C) = CALCULATED
(C-P) = CALCULATED PER PLATTED INFO.



DATE OF PREPARATION: 29 AUGUST 2008
DATE OF TOPOGRAPHY: AUGUST 2000
CONTOUR INTERVALS = 1 FOOT
NOTE: TOPOGRAPHY PROVIDED BY THE OWNER TO BAUGHMAN COMPANY, P.A.



VICINITY MAP
SEC. 2, T27S, R1W

State of Kansas) SS
Sedgwick County) We, Baughman Company, P.A., Surveyors in
aforesaid county and state do hereby certify that we have surveyed and
platted "COX MACHINE 3RD ADDITION", Wichita, Sedgwick County, Kansas
and that the accompanying plat is a true and correct exhibit of the
property surveyed, described as a replat of all of Lots 1, 2, 3, 4, 5, 6, 7,
8, and 9, Zoo Business Park, Wichita, Sedgwick County, Kansas, Together
With all of Reserves "B", "C", and "D", all as platted in said Zoo Business
Park, together With all of Zoo Park Circle as dedicated in said Zoo
Business Park.

This plat of "COX MACHINE 3RD ADDITION",
Wichita, Sedgwick County, Kansas has been submitted to and approved by
the Wichita-Sedgwick County Metropolitan Area Planning Commission,
Wichita, Kansas.

Dated this _____ day of _____, 2008.
Wichita-Sedgwick County Metropolitan Area Planning Commission

_____,
M.S. Mitchell, Chair

_____,
John L. Schlegel, Secretary

Existing public easements and dedications
being vacated by virtue of K.S.A. 12-512(b).

All being situated in the SW1/4 of Sec. 2, Twp. 27-S,
R-1-W of the 6th P.M., Sedgwick County, Kansas.

Baughman Company, P.A.

_____,
Michael C. Conrey, Surveyor

This plat approved and all dedications
shown hereon accepted by the City Council of the City of Wichita,
Kansas, this _____ day of _____, 2008.

Know all men by these presents that we,
the undersigned, have caused the land in the surveyors certificate to be
platted into Lots, a Block, Reserves, and a Street, to be known as "COX
MACHINE 3RD ADDITION", Wichita, Sedgwick County, Kansas. The utility
easements are hereby granted as indicated for the construction and
maintenance of all public utilities. The drainage and utility easements are
hereby granted as indicated for drainage purposes and for the
construction and maintenance of all public utilities. The drainage
easements are hereby granted as indicated for drainage purposes.
Reserve "A" is herby reserved for entryfeatures/monuments, signage,
irrigation, walls, walks, lighting, landscaping, recreational structures, berms,
drainage purposes, pipelines as confined to easements, and utilities as
confined to easements. Reserve "B" is herby reserved for
entryfeatures/monuments, signage, irrigation, walls, walks, lighting,
landscaping, recreational structures, berms, lakes, drainage purposes,
pipelines as confined to easements, and utilities as confined to easements.
The streets are hereby dedicated to and for the use of the public.
Access controls shall be as depicted on the face of the plat and are
hereby granted to the City of Wichita, Kansas. Reserves "A" & "B" shall
be owned and maintained by the Lot Owners Association for the addition.
The Minimum Building Pad Elevations for the lowest opening to the
structures shall be as indicated on the face of the plat.

_____,
Carl Brewer, Mayor

_____,
Karen Sublett, City Clerk

Reviewed in accordance with K.S.A. 58-2005
on this _____ day of _____, 2008.

Coxco, L.L.C., a Kansas limited liability company

_____,
Steven E. Cox, Member

_____,
Tricia L. Robello, L.S. #1246
Deputy County Surveyor
Sedgwick County, Kansas

State of Kansas) SS
Sedgwick County) The foregoing instrument acknowledged before
me, this _____ day of _____, 2008, by Steven E. Cox, Member of the
Coxco, L.L.C., a Kansas limited liability company, on behalf of the
company.

Entered on transfer record this _____ day
of _____, 2008.

_____,
Don Brace, County Clerk

_____,
Notary Public

My App't. Exp. _____

We the undersigned holders of a mortgage on the
above described property, do hereby consent to this plat of "COX
MACHINE 3RD ADDITION", Wichita, Sedgwick County, Kansas.

Emprise Bank

(Title)

State of Kansas) SS This is to certify that this plat has been
filed for record in the office of the Register of Deeds, this _____ day
of _____, 2008 at _____ o'clock _____ M; and is duly recorded.

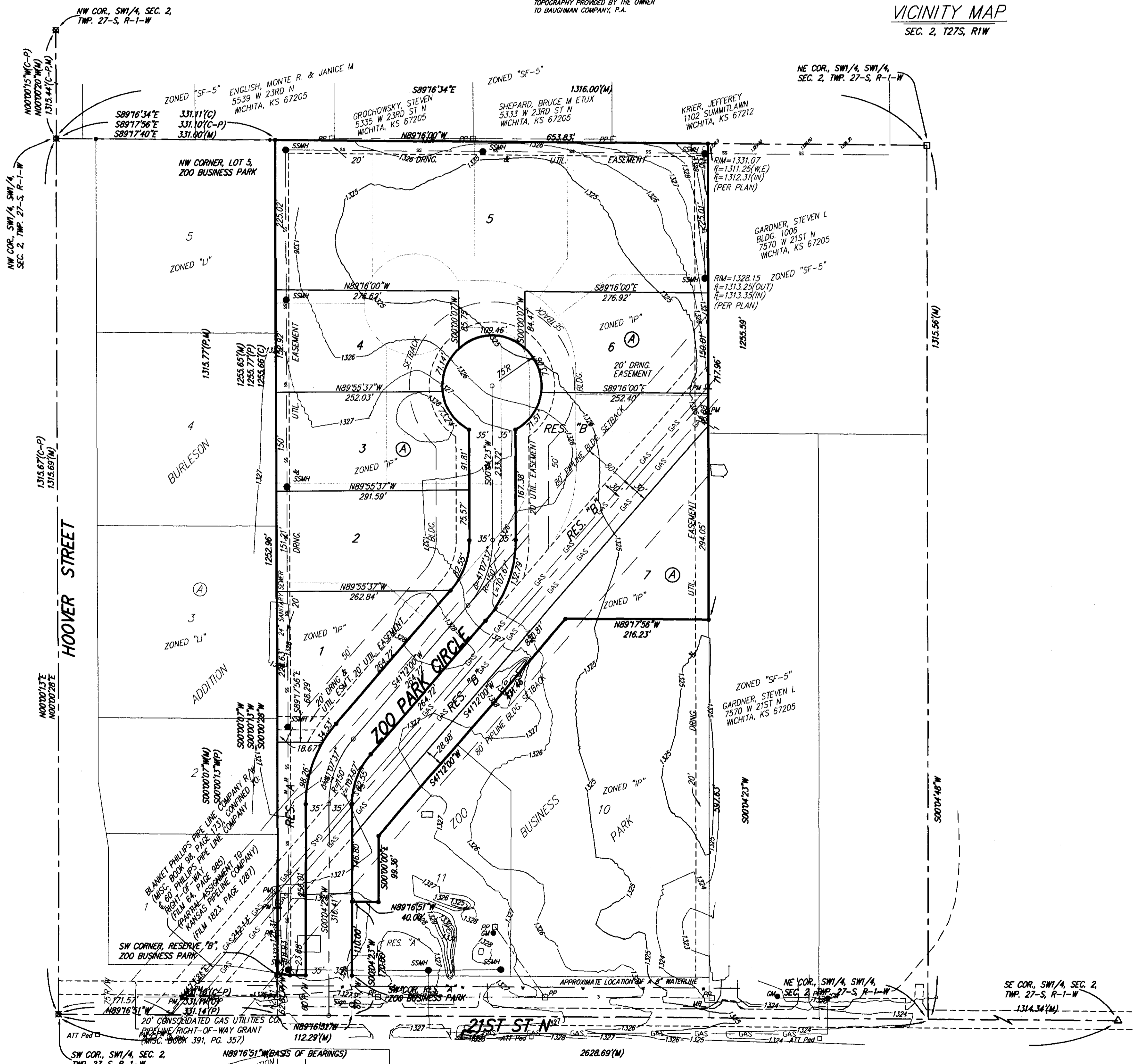
_____,
Bill Meek, Register of Deeds

State of Kansas) SS The foregoing instrument acknowledged be-
fore me, this _____ day of _____, 2008, by _____,
(Title) _____ of Emprise Bank, on behalf of the bank.

_____,
Tonya Buckingham, Deputy

_____,
Notary Public

My App't. Exp. _____



MINIMUM BUILDING PAD ELEVATIONS FOR LOWEST OPENING TO THE STRUCTURES		
LOT	BLOCK	ELEVATION
6,7	A	1,326.0

NOTE:
A drainage plan has been developed for this subdivision and is on file with
the City of Wichita, Kansas. Drainage intent shall remain as depicted or as
modified with the approval of the City Engineer of the City of Wichita,
Kansas. No obstructions which impede the flow of this drainage plan shall
be allowed.

COX MACHINE 3RD ADDITION

21 AUGUST 2008
Baughman Company, P.A.
315 Ellis St. Wichita, KS 67211 P 316-262-7271 F 316-262-0149
Baughman ENGINEERING | SURVEYING | PLANNING | LANDSCAPE ARCHITECTURE
F:\PLAT\COXMACHINE3RDADDITION\DWG\COXMACHINE3RD.PDWG