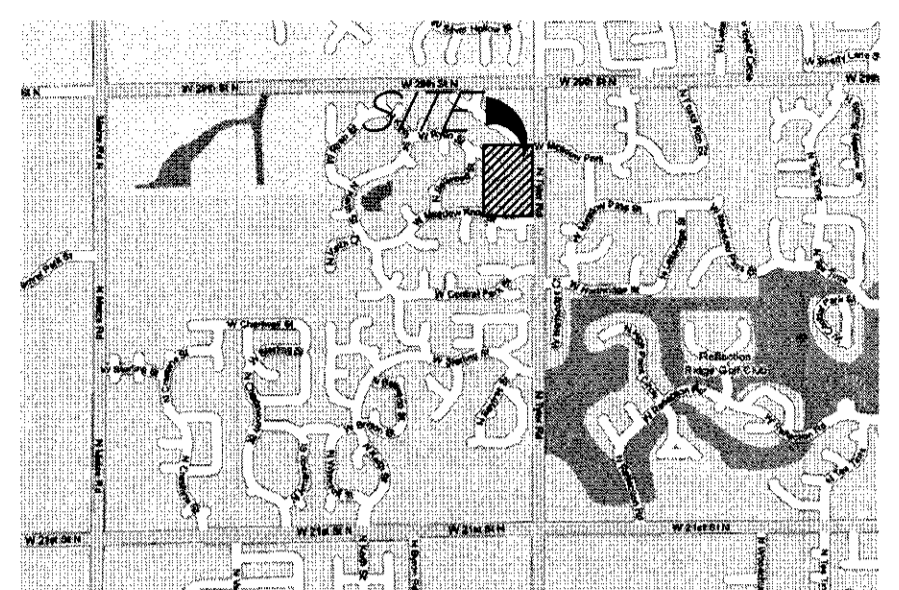


# ONE-STEP PLAT OF Trans-Net Addition WICHITA, SEDGWICK COUNTY, KANSAS

Part of the Northeast 1/4, Section 5, Township 27 South, Range 1 West of the 6th. P.M.

- LEGEND**
- 1/2" Iron Pin (found)
  - ⊗ 5/8" Rebar (set) RLS #1294
  - ⊙ 1/2" Iron Pin w/Savoy cap (found)
  - (P) Platted measurements from record
  - (D) Described measurements from deed
  - (M) Measured from actual field location
  - ⊕ =Fire Hydrant
  - ⊗ =Water Valve
  - ⊙ =Water Meter
  - ⊕ =Telephone Riser
  - ⊙ =Power Pole
  - ⊙ =Benchmark with elevation
  - =Existing Sanitary Sewer
  - =Existing underground Telephone
  - =Existing Gas Line
  - =Existing Overhead Electric
  - =Existing Water line
  - =Existing Fence
  - =Existing Center line of road



LOCATION MAP

State of Kansas }  
County of Sedgwick } ss

I, Randall L. Elkins, a licensed land surveyor of the State of Kansas, do hereby certify that the following described tract of land was surveyed on the 11th day of September, 2008 and the accompanying final plat prepared and that all the monuments shown herein actually exist and their positions are correctly shown to the best of my knowledge and belief:

State of Kansas }  
County of Sedgwick } ss  
This instrument was acknowledged before me on this \_\_\_\_ day of \_\_\_\_\_, 2008, by \_\_\_\_\_

Notary Public  
My Commission Expires: \_\_\_\_\_

Described as the Trans-Net Addition, Wichita, Sedgwick County, Kansas, beginning 1042 ft South of the Northeast Corner of the NE 1/4, West 317 ft, South 275 ft, East 317 ft, Excluding existing 30 ft Right-of-Way on Tyler Road.

State of Kansas }  
City of Wichita } ss

All being situated in the NE 1/4 of Section 5, Township 27-S, Range 1, West to the 6th P.M., Sedgwick County, Kansas.

This plat of Transnet Addition, Wichita, Sedgwick County, Kansas, has been submitted to and approved by the Wichita-Sedgwick County Metropolitan Area Planning Commission, Wichita, Kansas. Dated this \_\_\_\_ day of \_\_\_\_\_, 2008. Wichita-Sedgwick County Metropolitan Area Planning Commission.

Said tract contains 1.81 acres ±.

All easements and rights-of-way within said lots are hereby vacated by virtue of KSA 12-512(b) amended.

M.S. Mitchell, Chairman  
John L. Schlegel, Secretary

State of Kansas }  
City of Wichita } ss

This plat approved and all dedications shown hereon accepted by the City Council of the City of Wichita, Kansas, this \_\_\_\_ day of \_\_\_\_\_, 2008.

At the Direction of the City Council

Randall L Elkins, L.S. #1294 Date

Carl Brewer, Mayor  
Karen Sublett, City Clerk

State of Kansas }  
County of Sedgwick } ss

Know all men by these presents, that we, the undersigned, have caused the land described in the surveyor's certificate to be platted into a Lot and Block to be known as Trans-Net Addition, Wichita, Sedgwick County, Kansas. Any easements are hereby granted as indicated for constructing, maintaining, operating, and repairing public utilities. A drainage plan has been developed for the plat and all drainage easements, rights-of-way, or reserves shall remain at established grades or as modified with the approval of the applicable City or County Engineer, and unabstracted to allow for the conveyance of stormwater. And further that the land contained herein is held and shall be conveyed subject to any applicable restrictions, reservations and covenants now on file or hereafter filed in the Office of the Register of Deeds of Sedgwick County, Kansas.

Entered on transfer record this \_\_\_\_ day of \_\_\_\_\_, 2008.

Donald Brace, County Clerk

State of Kansas }  
County of Sedgwick } ss

This is to certify that this plat has been filed for record in the Office of the Register of Deeds this \_\_\_\_ day of \_\_\_\_\_, 2008, at \_\_\_\_ o'clock \_\_\_\_ M, and is duly recorded.

Access Control is hereby granted as follows:  
1. There shall be a maximum of 2 openings on Tyler Road.

Bill Meek, Register of Deeds

By: \_\_\_\_\_ Date  
Maize USD 266, Superintendent

Tonya Buckingham, Deputy

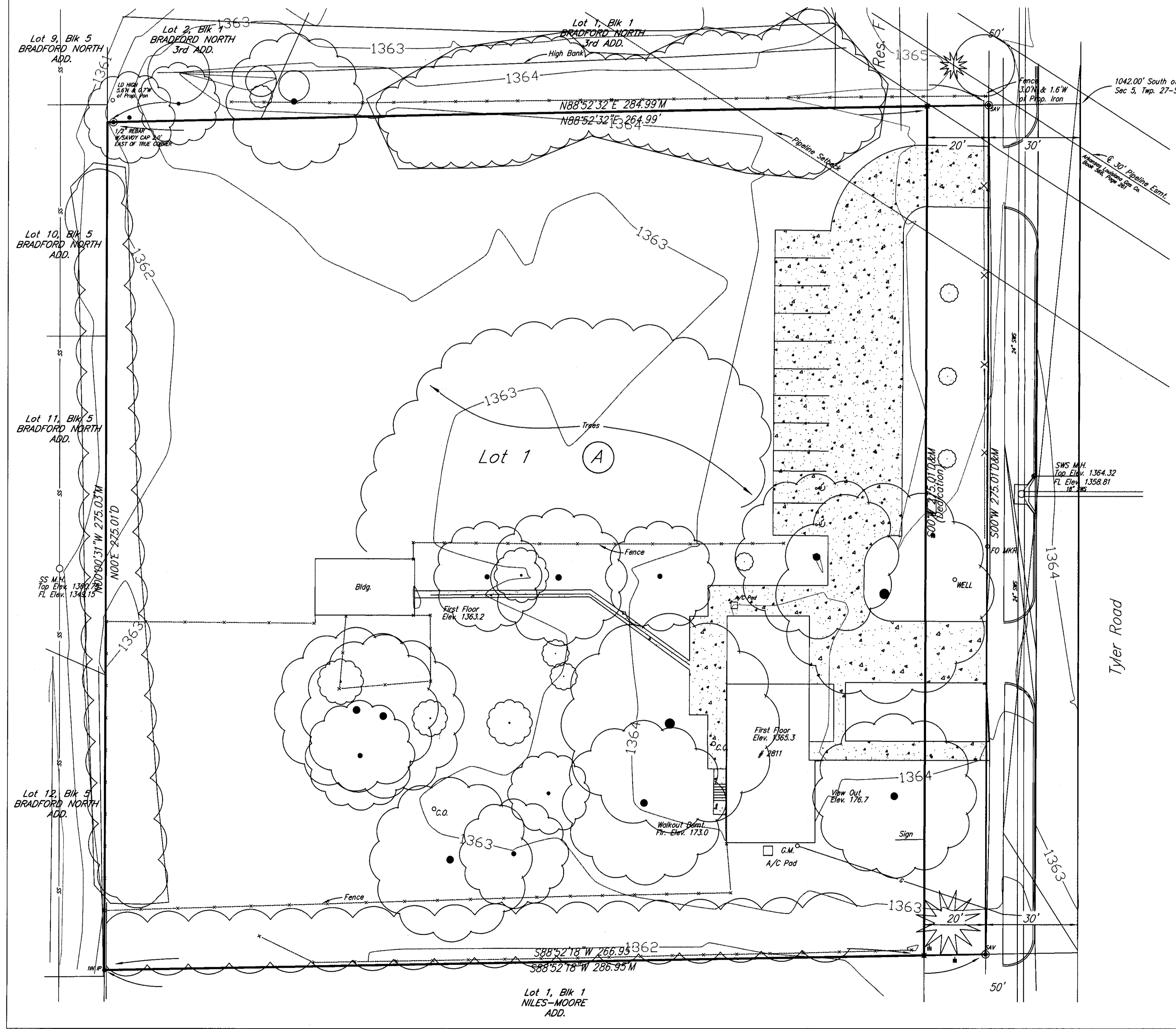
State of Kansas }  
County of Sedgwick } ss

This instrument was acknowledged before me on this \_\_\_\_ day of \_\_\_\_\_, 2008, by \_\_\_\_\_

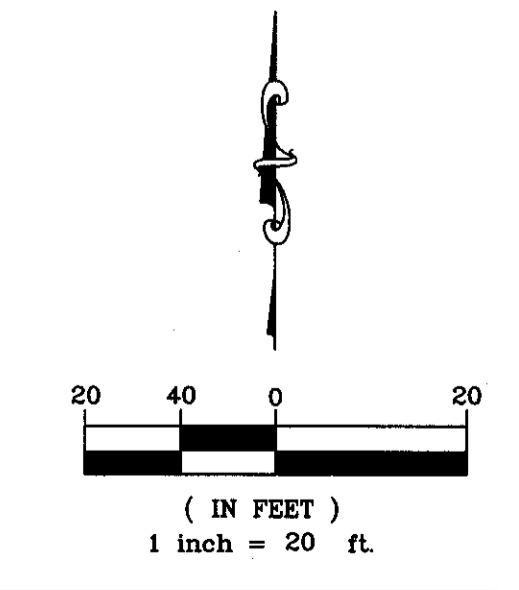
Reviewed in accordance with K.S.A. 58-2005 on this \_\_\_\_ day of \_\_\_\_\_, 2008.

Notary Public  
My Commission Expires: \_\_\_\_\_

Tricia L. Robello, L.S. #1246  
Deputy County Surveyor  
Sedgwick County, Kansas



B.M. "□" cut in top of curb on north side of curb inlet 1162.9'S from the N.E. Cor. of the NE 1/4 of Sec. 5, Twp. 27-S, R-1-W of the 6th P.M. & 30'W of centerline of Tyler Road Elev. 1364.18 (NAVD 88)



Filename: 08138 TRANS-NET PLAT