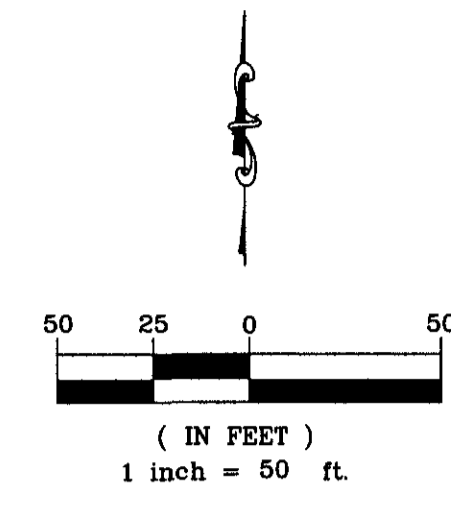


One-Step Final Plat Lewis Magnet School Addition Wichita, Sedgwick County, Kansas

Part of the SW 1/4, Section 5, Township 28 South, Range 1 East of the 6th. P.M.



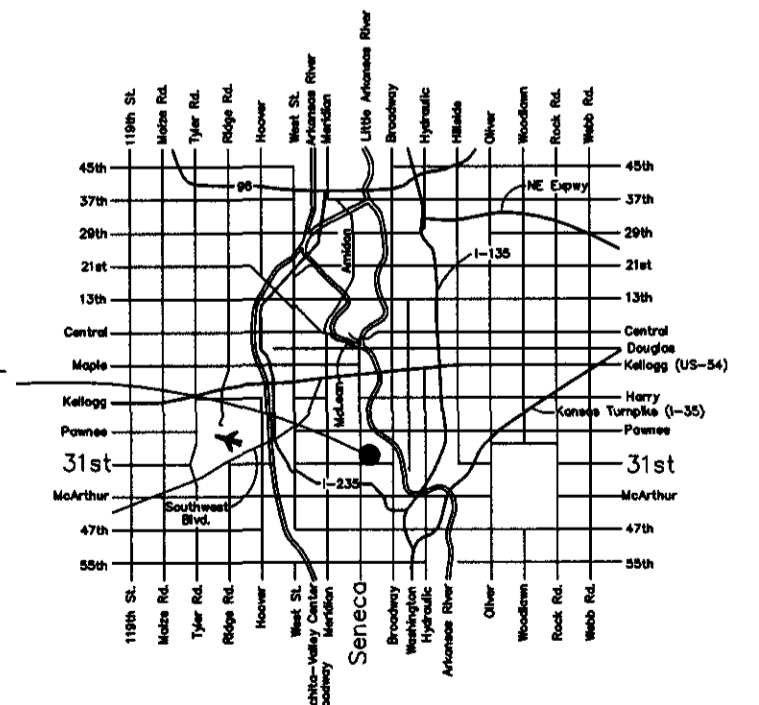
LEGEND

- ⊕ Benchmark
- ⊕ Power Pole
- ⊕ Light Pole
- ⊕ Gas Valve
- ⊕ Fire Hydrant
- ⊕ Flag Pole
- ⊕ Water Valve
- ⊕ Water Meter
- ⊕ Sign
- ⊕ Cleanout
- ⊕ Cedar
- ⊕ Tree
- ⊕ Fence
- ⊕ Gas Line
- ⊕ Underground Electric
- ⊕ Overhead Electric
- ⊕ Underground Telephone
- 1/2" Iron Pipe (found)
- ⊕ 5/8" Rebar (set) KEMPA CLS #157

NOTES:
Utility locations are from USD 265 records and Kansas One-Call.

Benchmarks:
City of Wichita disc on the Southwest corner of traffic signal light pole base at the northeast corner of 31st Street South and Seneca.
Elevation=1283.22

3/4" steel rod in curb @ east end of the southeast return at Osage and 29th Street South.
Elevation=1285.75

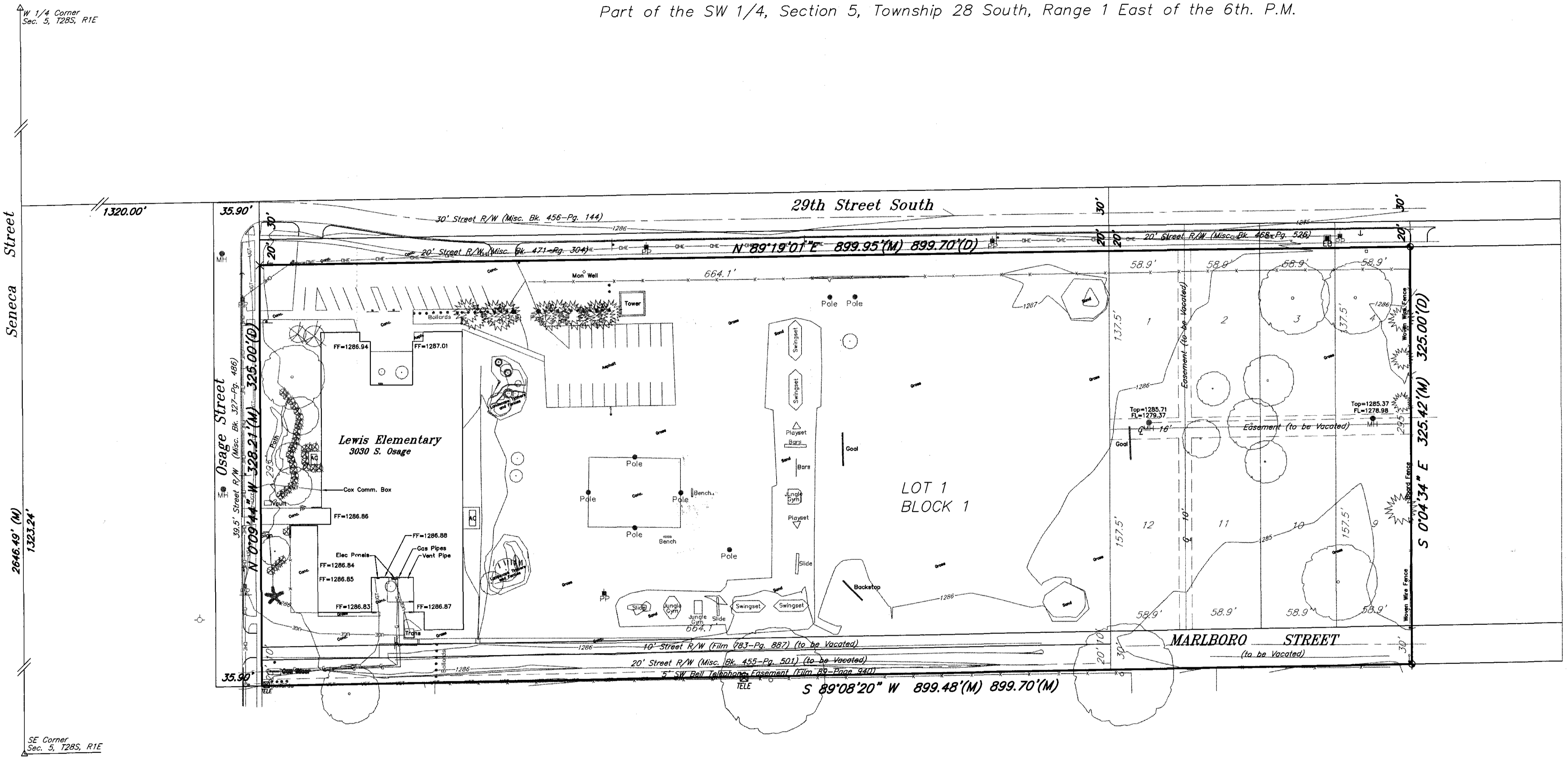


LOCATION MAP

Filename: 09148 Lewis School Plat.dwg \ Lewis School Prelim Plat.dwg 2-05-2010

kemiller
engineering

516 S. Market, Wichita, KS 67202 316/264-0242



State of Kansas }
County of Sedgwick } ss

I, Bradley C. Ward, a licensed land surveyor of the State of Kansas, do hereby certify that the following described tract of land was surveyed on the 12th day of November, 2009 and the accompanying final plat prepared and that all the monuments shown herein actually exist and their positions are correctly shown to the best of my knowledge and belief:

LEGAL DESCRIPTION

Beginning 80 rods East of the Northwest Corner of the South Half of the Southwest Quarter; thence South 375 feet; thence East 700 feet; thence North 375 feet; thence West to the Point of Beginning, EXCEPT the West 39.5 feet and the South 30 feet, dedicated as street right-of-way, of Section 5, Township 28 South, Range 1 East, of the Sixth Principal Meridian, Sedgwick County, Kansas.

AND:
Lots 1-4, and 9-12, Block 1, Gibbs First Addition, to Wichita, Kansas.

All easements and Rights of Way within said tract are hereby vacated by virtue of KSA 12-512(b) amended.

Bradley C. Ward, L.S. #920 Date

State of Kansas }
County of Sedgwick } ss

Know all men by these presents, that we, the undersigned, have caused the land described in the surveyor's certificate to be platted into a Lot and Block to be known as Lewis Magnet School Addition, Wichita, Sedgwick County, Kansas. Any easements are hereby granted as indicated for constructing, maintaining, operating, and repairing public utilities. A drainage plan has been developed for the plat and all drainage easements, rights-of-way, or reserves shall remain at established grades or as modified with the approval of the applicable City or County Engineer, and unobstructed to allow for the conveyance of stormwater. And further that the land contained herein is held and shall be conveyed subject to any applicable restrictions, reservations and covenants now on file or hereafter filed in the Office of the Register of Deeds of Sedgwick County, Kansas.

By: _____, owner Date

State of Kansas }
County of Sedgwick } ss

This instrument was acknowledged before me on this _____ day of _____, 2010, by

_____, owner

Notary Public
My Commission Expires: _____

State of Kansas }
City of Wichita } ss

This plat of Lewis Magnet School Addition, Wichita, Sedgwick County, Kansas, has been submitted to and approved by the Wichita-Sedgwick County Metropolitan Area Planning Commission, Wichita, Kansas. Dated this _____ day of _____, 2010. Wichita-Sedgwick County Metropolitan Area Planning Commission.

G. Nelson Van Fleet, Chair

John L. Schlegel, Secretary

State of Kansas }
City of Wichita } ss

This plat approved and all dedications shown herein accepted by the City Council of the City of Wichita, Kansas, this _____ day of _____, 2010.

At the Direction of the City Council

Carl Brewer, Mayor

Karen Sublett, City Clerk

Entered on transfer record this _____ day of _____, 2010.

Kelly Arnold, County Clerk

State of Kansas }
County of Sedgwick } ss

This is to certify that this plat has been filed for record in the Office of the Register of Deeds this day of _____, 2010, at _____ o'clock _____ M, and is duly recorded.

Bill Meek, Register of Deeds

Tonya Buckingham, Deputy

Reviewed in accordance with K.S.A. 58-2005 on this _____ day of _____, 2010.

Tricia L. Robello, L.S. #1246
Deputy County Surveyor
Sedgwick County, Kansas