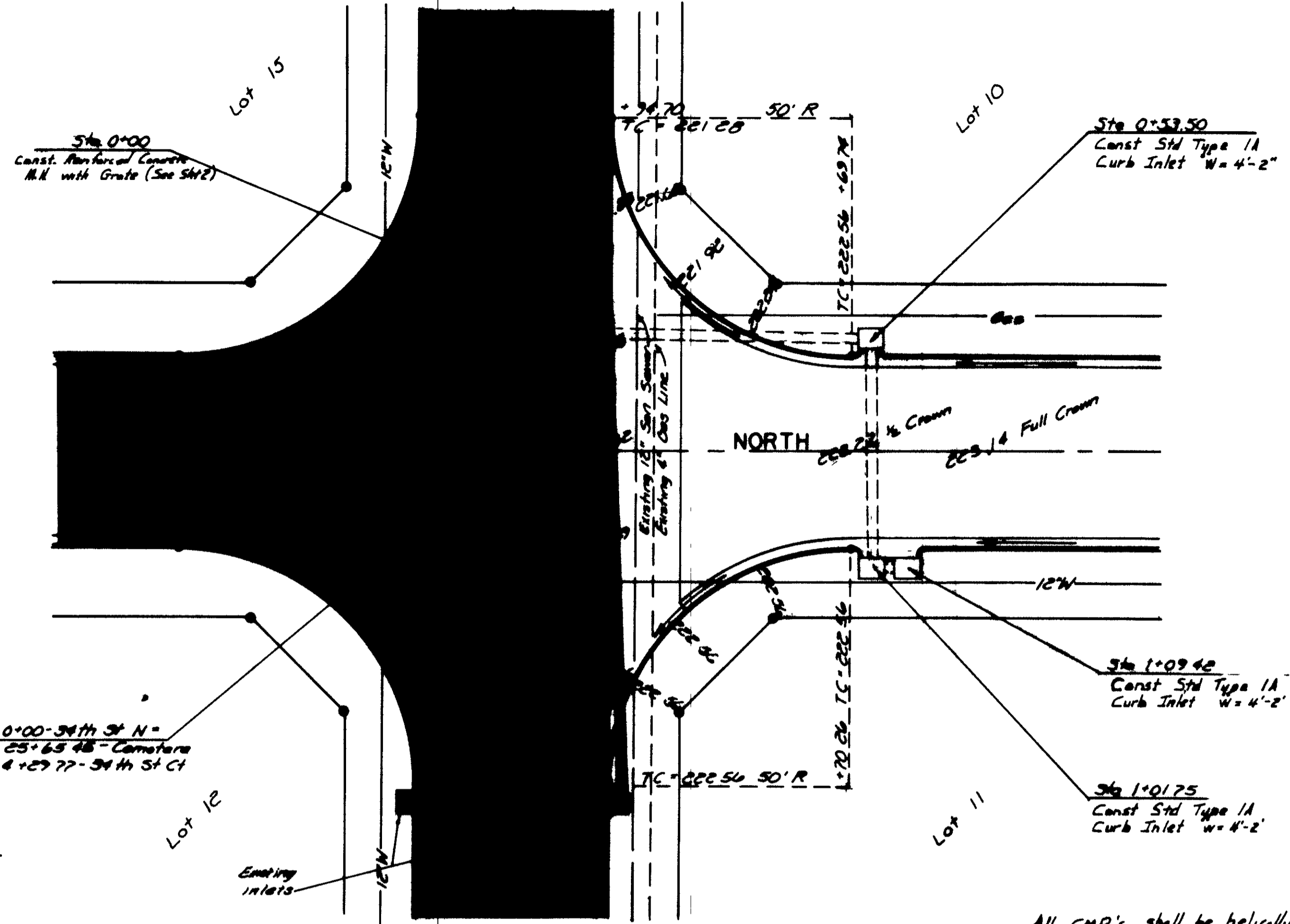
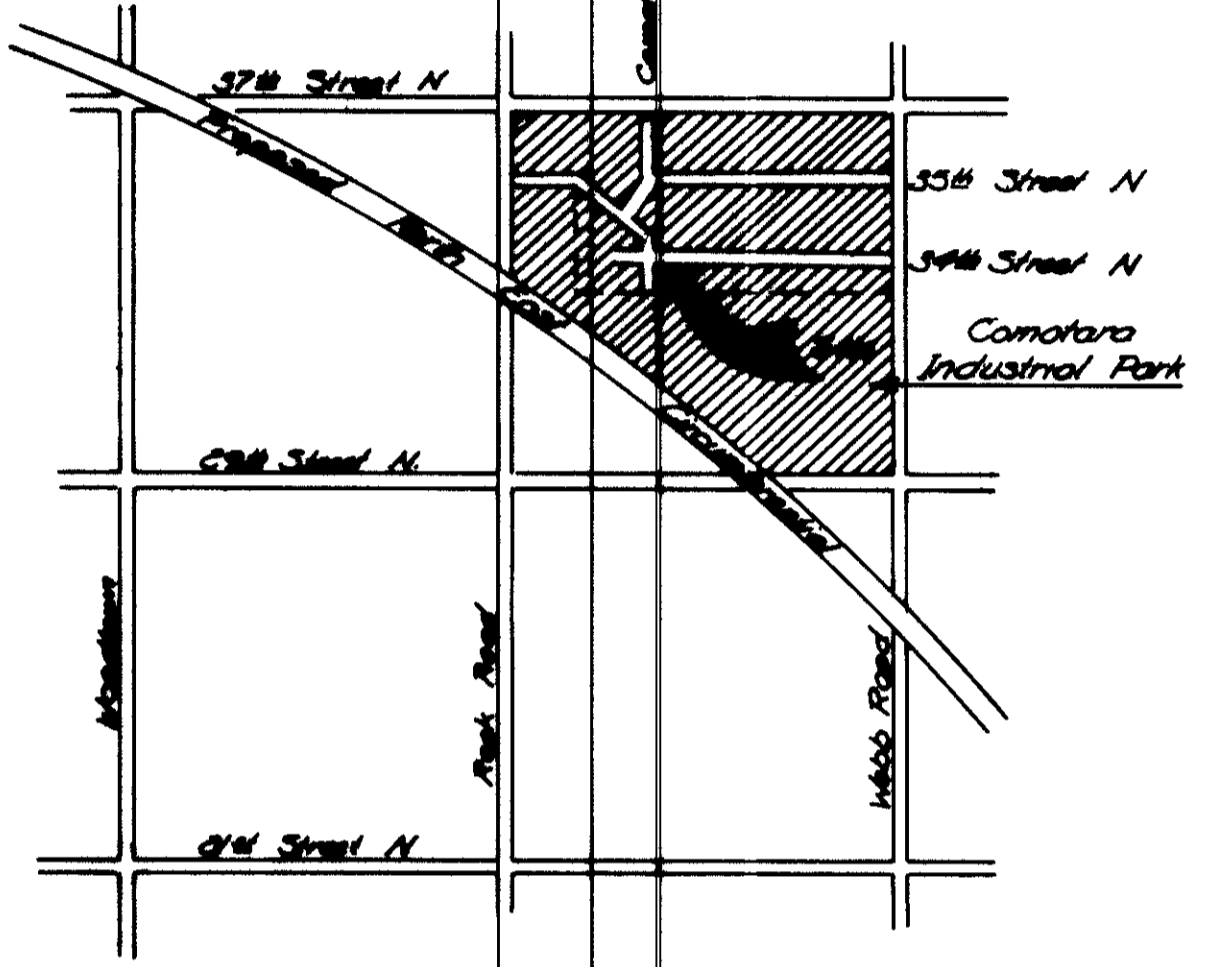


Note: All irons removed, must be replaced

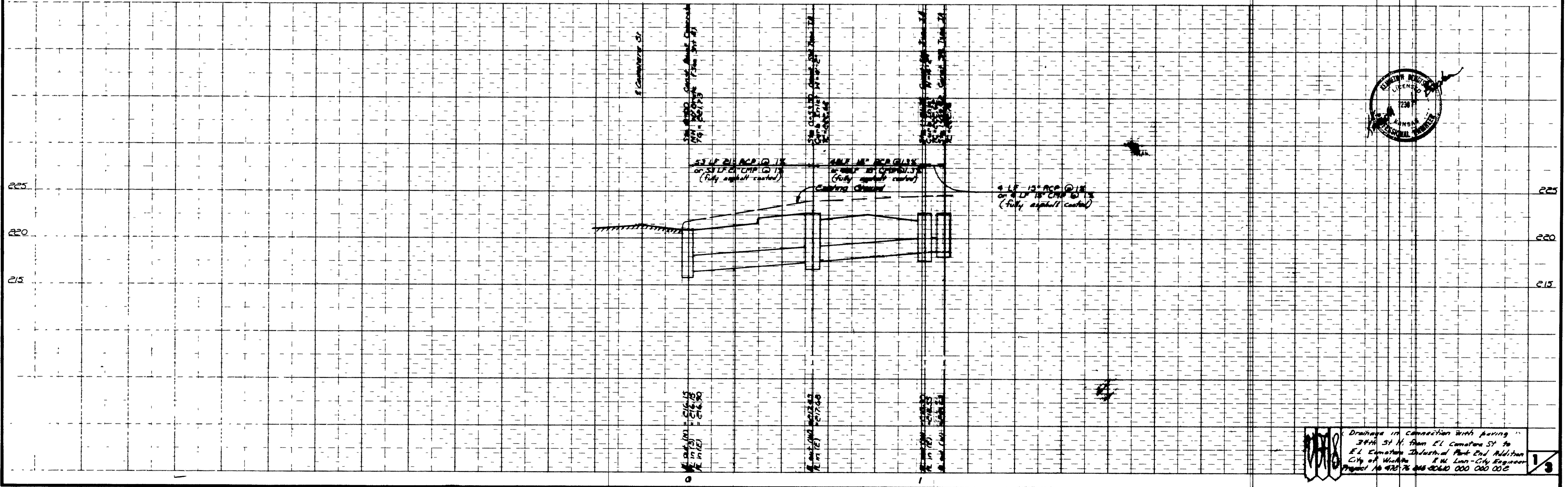


Bench Mark  
Top of Iron, 60' E of SW corner,  
Lot C, Comatara Ind Park 3<sup>rd</sup> Acre  
on N 1/4 line of 34th Street N  
Elev. - 887.06



Drainage Contractor shall coordinate construction with paving contractor

All CMP's shall be helically corrugated pipe



Drainage in connection with paving  
34th St N from E Comatara St to  
E Comatara Industrial Park End Bellows  
City of Waukesha R. M. Linn - City Engineer  
Project No 470776 488-20640 000 000 000