

CARRIAGE OAKS - STORM WATER SEWER PLAN

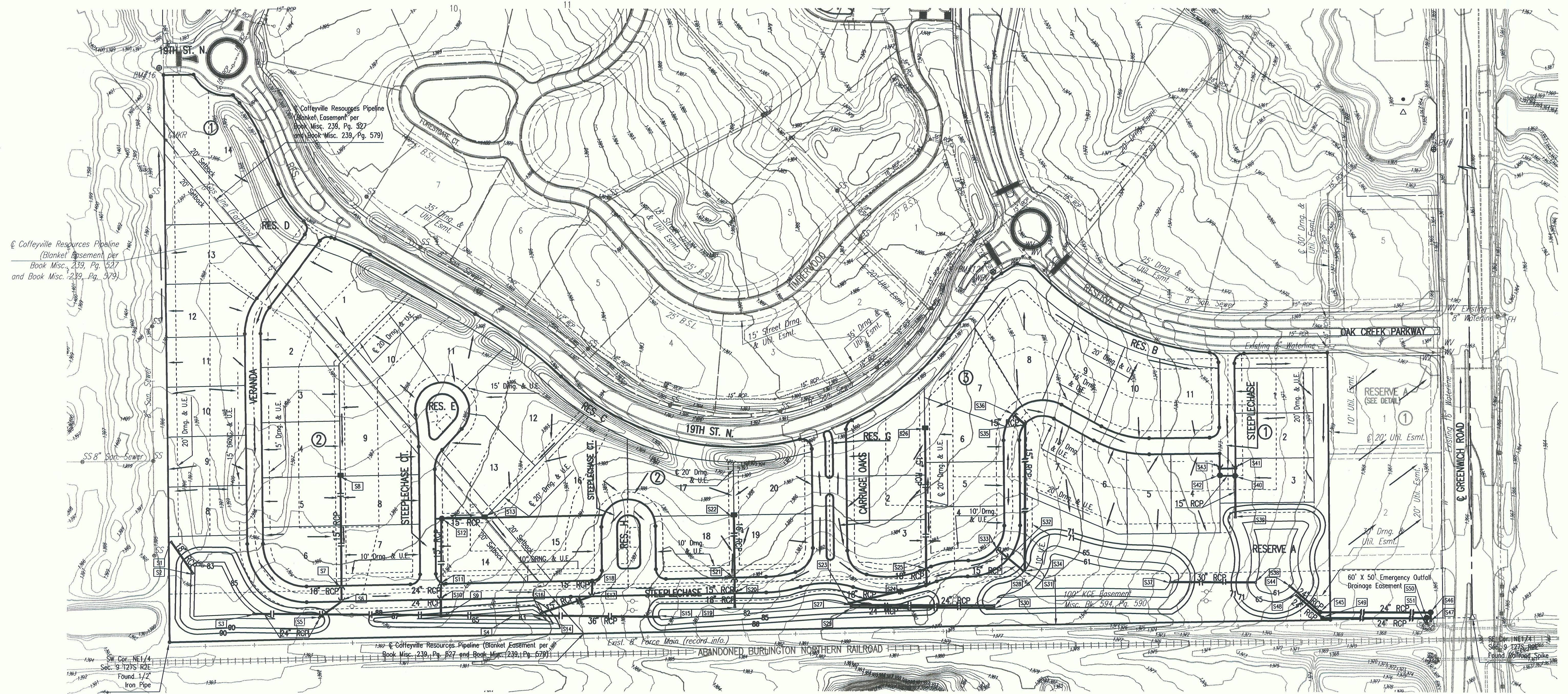
AN ADDITION TO WICHITA, SEDGWICK COUNTY, KANSAS

LEGEND

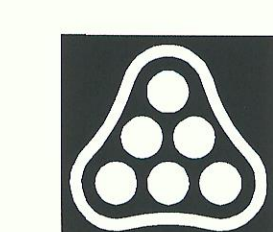
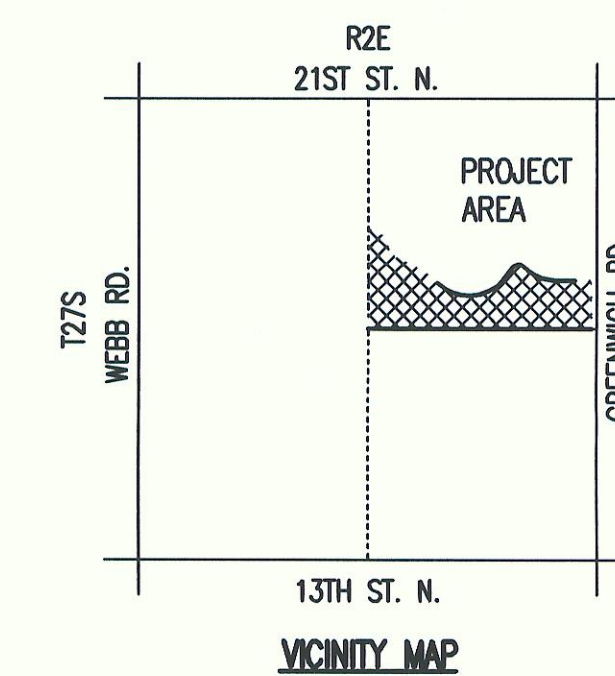
- STORM SEWER AND INLET
- STORM SEWER AND MANHOLE
- 100 YEAR STORM FLOWS
- 2 YEAR STORM FLOWS
- MINOR BASIN BOUNDARY



SCALE: 1" = 100'



STRUCTURE	TOP ELEV.	FL. ELEV.	STRUCTURE	TOP ELEV.	FL. ELEV.	STRUCTURE	TOP ELEV.	FL. ELEV.	STRUCTURE	TOP ELEV.	FL. ELEV.
S1	---	1392.00'	S16	---	1386.00'	S31	---	1369.00'	S46	1366.45'	1362.00'
S2	---	1385.00'	S17	1391.72'	1387.39'	S32	1384.34'	1379.34'	S47	---	1362.00'
S3	---	1383.00'	S18	1391.72'	1388.39'	S33	1384.34'	1379.44'	S48	---	1366.60'
S4	---	1383.00'	S19	---	1383.50'	S34	---	1369.00'	S49	1368.50'	1364.55'
S5	---	1386.00'	S20	1390.25'	1383.58'	S35	1384.56'	1379.56'	S50	1365.45'	1362.75'
S6	1393.14'	1386.12'	S21	1390.25'	1383.70'	S36	1384.56'	1379.75'	S51	---	1362.00'
S7	1393.14'	1386.21'	S22	1391.45'	1384.53'	S37	---	1362.00'			
S8	1395.14'	1387.07'	S23	---	1382.00'	S38	---	1362.00'			
S9	---	1385.00'	S24	1385.85'	1382.48'	S39	---	1369.00'			
S10	1392.54'	1385.06'	S25	1385.85'	1382.58'	S40	1376.28'	1371.28'			
S11	1392.54'	1385.12'	S26	1385.08'	1383.64'	S41	1376.74'	1371.74'			
S12	1394.29'	1385.61'	S27	---	1382.00'	S42	1376.42'	1371.42'			
S13	1392.50'	1385.94'	S28	---	1369.00'	S43	1376.74'	1371.74'			
S14	---	1383.00'	S29	---	1382.00'	S44	---	1362.00'			
S15	---	1382.00'	S30	---	1369.00'	S45	1368.80'	1362.00'			



No.	Revision	By	Date

CITY OF WICHITA
SEDGWICK COUNTY, KANSAS
**CARRIAGE OAKS AT OAK CREEK
SWS PLAN**

Professional Engineering Consultants, P.A.
303 S. TOPEKA • WICHITA, KANSAS 67202
316-262-2691 • FAX 316-262-3003

Designed by	JEH	Job No.	09223	Sht. 1 of 1
Drawn by	JAG	Date	July 2009	

Saved: 07-30-2009 2:43:36 PM by JAG
 P:\0500\09223\09223 Updated.swg
 G:\0500\09223\09223 Updated.swg