

ONE-STEP FINAL PLAT
NORTH GREENWICH ADDITION
WICHITA, SEDGWICK COUNTY, KANSAS

State of Kansas) SS
Sedgwick County) We, Baughman Company, P.A., Surveyors in
aforesaid county and state do hereby certify that we have surveyed and
platted "NORTH GREENWICH ADDITION", Wichita, Sedgwick County, Kansas
and that the accompanying plat is a true and correct exhibit of the
property surveyed, described as the south 1000.00 feet of the west 1366.80
feet of the N1/2 of the SW1/4 of Sec. 34, Twp. 26-S, R-2-E of the 6th P.M.,
Sedgwick County, Kansas, subject to road rights-of-way of record.

Existing public easements and dedications
being vacated by virtue of K.S.A. 12-512(b).

Baughman Company, P.A.

_____, Surveyor
Michael G. Conrey

Know all men by these presents that we,
the undersigned, have caused the land in the surveyors certificate to be
platted into Lots, a Block, and Streets, to be known as "NORTH
GREENWICH ADDITION", Wichita, Sedgwick County, Kansas. The utility
easements are hereby granted as indicated for the construction and
maintenance of all public utilities. The drainage and utility easements are
hereby granted as indicated for drainage purposes and for the construction
and maintenance of all public utilities. The streets are hereby dedicated
to and for the use of the public. Access controls shall be as depicted on
the face of the plat and are hereby granted to the City of Wichita,
Kansas. The permitted opening locations shall be as determined by the
City Engineer of the City of Wichita, Kansas.

Greenwich Investments, LLC
a Kansas limited liability company
Ritchie Associates, Inc., Manager

_____, Vice-President
Rob Ramseyer

State of Kansas) SS
Sedgwick County) The foregoing instrument acknowledged before
me, this _____ day of _____, 2009, by Rob Ramseyer, Vice-President
of Ritchie Associates, Inc., as Manager of Greenwich Investments, LLC, a
Kansas limited liability company, on behalf of the corporation.

_____, Notary Public
My App't. Exp. _____

We the undersigned holders of a mortgage on the
above described property, do hereby consent to this plat of "NORTH
GREENWICH ADDITION", Wichita, Sedgwick County, Kansas.

INTRUST Bank, N.A.

State of Kansas) SS
Sedgwick County) The foregoing instrument acknowledged be-
fore me, this _____ day of _____, 2009, by _____
_____, of INTRUST Bank, N.A., on behalf of the bank.
(Title)

_____, Notary Public
My App't. Exp. _____

This plat of "NORTH GREENWICH ADDITION",
Wichita, Sedgwick County, Kansas has been submitted to and approved by
the Wichita-Sedgwick County Metropolitan Area Planning Commission,
Wichita, Kansas.

Dated this _____ day of _____, 2009.
Wichita-Sedgwick County Metropolitan Area Planning Commission

_____, Chair
Darrell Downing

_____, Secretary
John L. Schlegel

This plat approved and all dedications
shown hereon accepted by the City Council of the City of Wichita,
Kansas, this _____ day of _____, 2009.

_____, Mayor
Carl Brewer

_____, City Clerk
Karen Sublett

Reviewed in accordance with K.S.A. 58-2005
on this _____ day of _____, 2009.

Tricia L. Robello, L.S. #1246
Deputy County Surveyor
Sedgwick County, Kansas

Entered on transfer record this _____ day
of _____, 2009.

_____, County Clerk
Kelly Arnold

State of Kansas) SS
Sedgwick County) This is to certify that this plat has been
filed for record in the office of the Register of Deeds, this _____ day
of _____, 2009 at _____ o'clock _____ M., and is duly recorded.

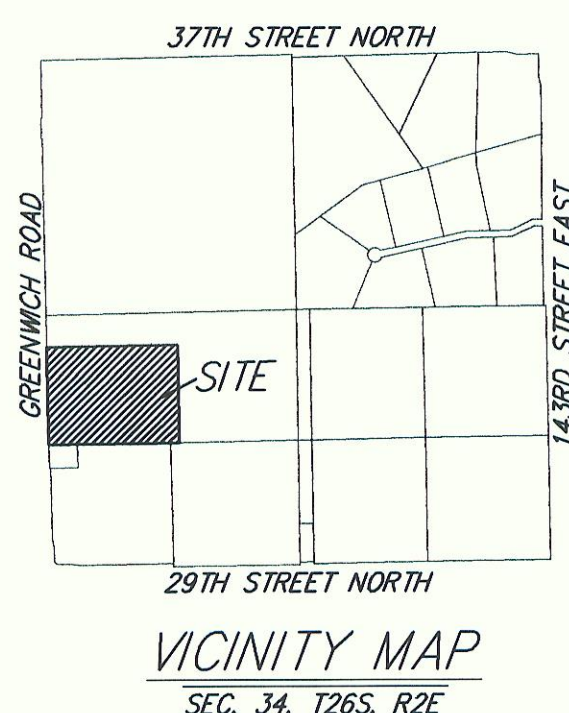
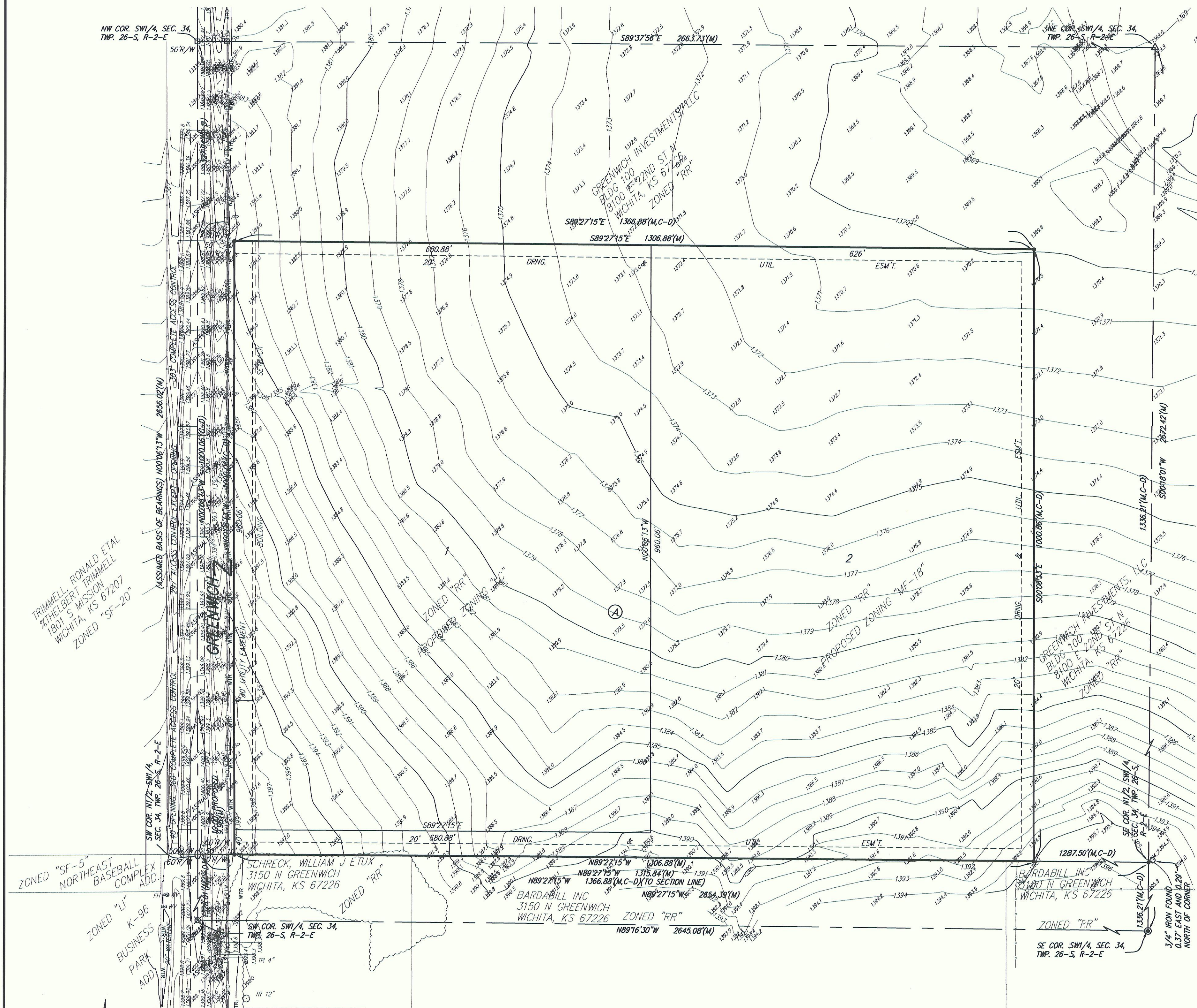
_____, Register of Deeds
Bill Meek

_____, Deputy
Tonya Buckingham

**NORTH GREENWICH
ADDITION**

12 JANUARY 2009

Baughman Company, P.A.
315 Ellis St. Wichita, KS 67211 P 316-262-7271 F 316-262-0149
Baughman ENGINEERING | SURVEYING | PLANNING | LANDSCAPE ARCHITECTURE
F:\PLAT\DWG-RRK



GREENWICH INVESTMENTS, LLC
8100 E 22ND ST N
BLDG. 1000
WICHITA, KS 67226
316-648-7300

BENCHMARK:
RR SPIKE IN ASPHALT SW COR. N1/2, SW1/4,
SEC. 34, TWP. 26-S, R-2-E
ELEV. = 1400.59 NAVD83

RR SPIKE IN EAST FACE OF POWER POLE 174'±
NORTH AND 10' WEST OF SW COR OF PLAT
ELEV. = 1398.64 NAVD83

NOTE:
ADDITIONAL BUILDING SETBACK REQUIREMENTS
AND RESTRICTIONS PER NORTH GREENWICH
DEVELOPMENT COMMUNITY UNIT PLAN DP-316.

• = #4 REBAR W/ "BAUGHMAN" CAP (SET)
• = #5 REBAR OVER STONE (FOUND)
• = 3/4" IRON IN THIMBLE (FOUND)
• = 3/4" IRON (FOUND)
• = #6 REBAR (FOUND)
• = 1/2" IRON (FOUND)
• = RAILROAD SPIKE (FOUND)
• = STONE (FOUND)

(M) = MEASURED
(C-D) = CALCULATED PER DESCRIBED
(R) = RECORD

DATE OF PREPARATION: 12 JANUARY 2009
DATE OF TOPOGRAPHY: 12 DECEMBER 2008
CONTOUR INTERVALS = 1 FOOT

PP = Power Pole
FH = Fire Hydrant
WV = Water Valve

NOTE:
A drainage plan has been developed for this subdivision and is on file with
the City of Wichita, Kansas. Drainage intent shall remain as depicted or as
modified with the approval of the City Engineer of the City of Wichita,
Kansas. No obstructions which impede the flow of this drainage plan shall
be allowed.