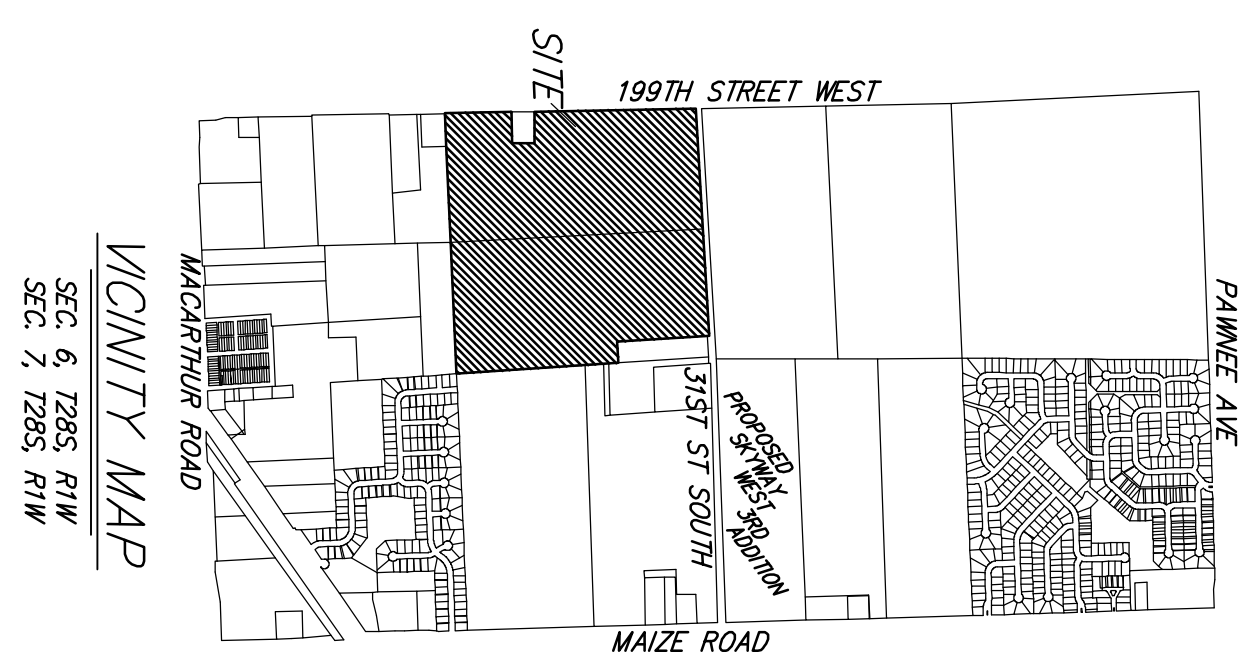
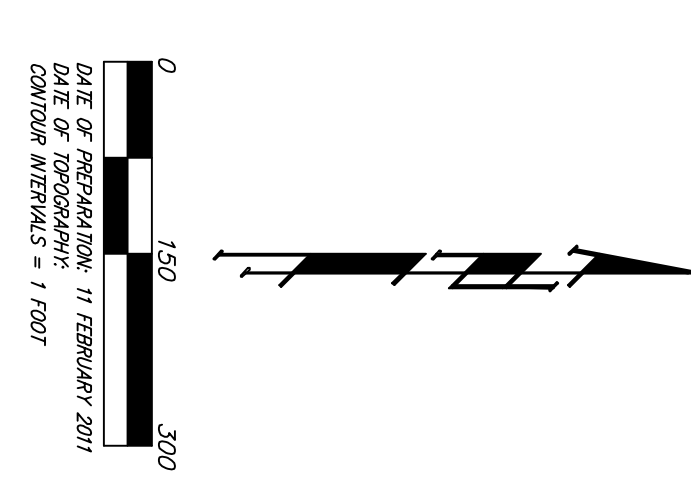
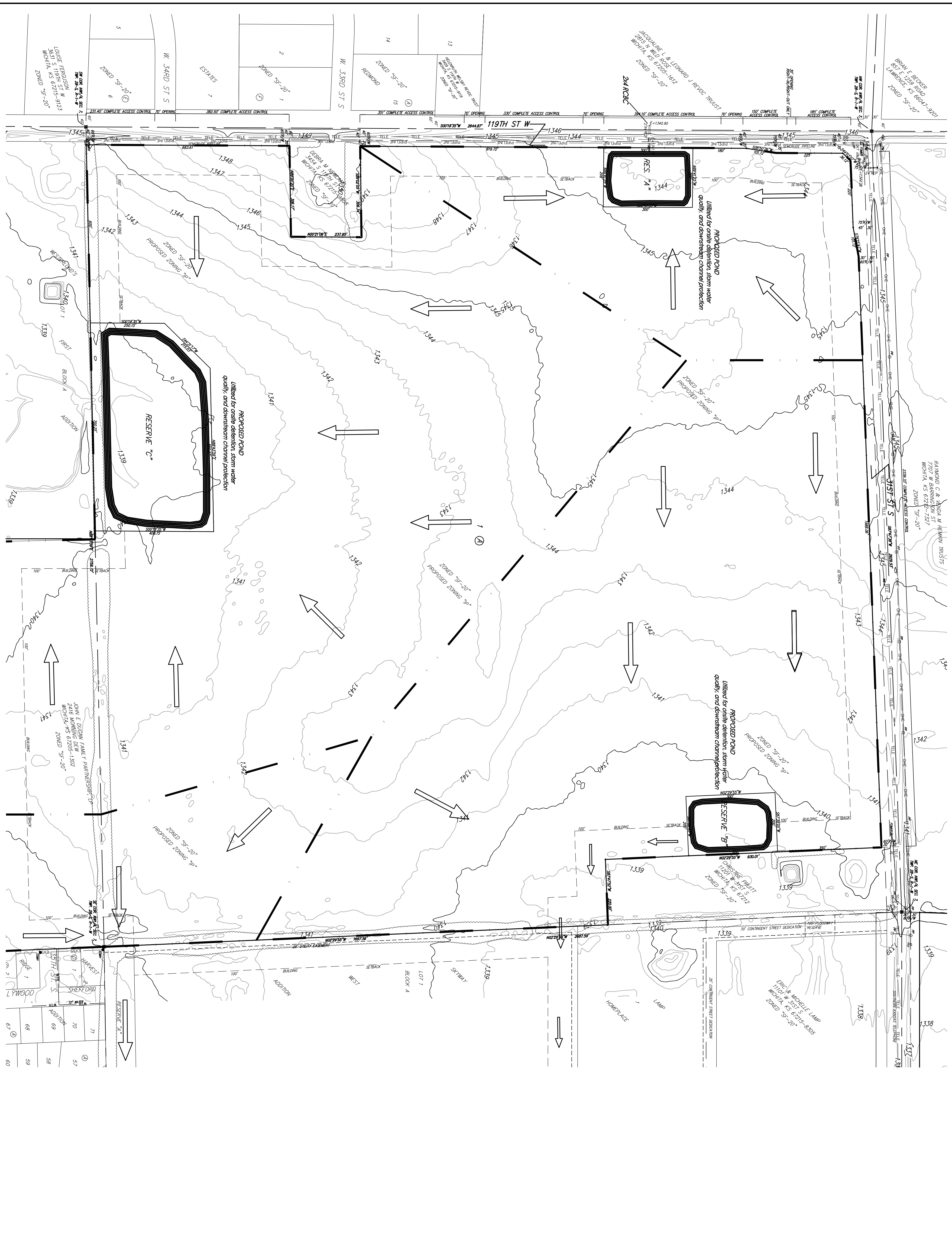


DRAINAGE CONCEPT

SKYWAY WEST 2ND ADDITION

WICHITA, SEDGWICK COUNTY, KANSAS



- TH = Fire Hydrant
- GO = Guy Pole
- W = Water Meter
- WV = Water Valve
- FM = Fire Main
- RM = Riprap Mat
- PP = Power Pole
- SP = Storm Sewer Manhole
- AT = Air Termination Point
- AT Pad = Air Termination Pad
- WM = Water Meter
- WM = Water Valve

WTR	WATER LINE	WTR
ATST	SOUTHWATER BELT	ATST
GAS	GAS LINE	GAS
COV	CABLE TV	COV
OE	OVERHEAD ELECTRIC LINE	OE
SW	SWITCHING SERVICE	SW
UE	UNDERGROUND ELECTRIC LINE	UE
PRE	PRELIMINARY	PRE

DRAINAGE CONCEPT
SKYWAY WEST 2ND ADDITION

28 FEBRUARY 2011

Baughman Company, P.A.
315 BIRCH ST. WICHITA, KS 67211 P: 316.262.2711 F: 316.262.0419
KANSAS | ILLINOIS | MISSOURI | IOWA | ARIZONA | ARKANSAS

E:\PROJECTS\SKYWAYWEST2ND\SKYWAY2ND\DWG\DRR