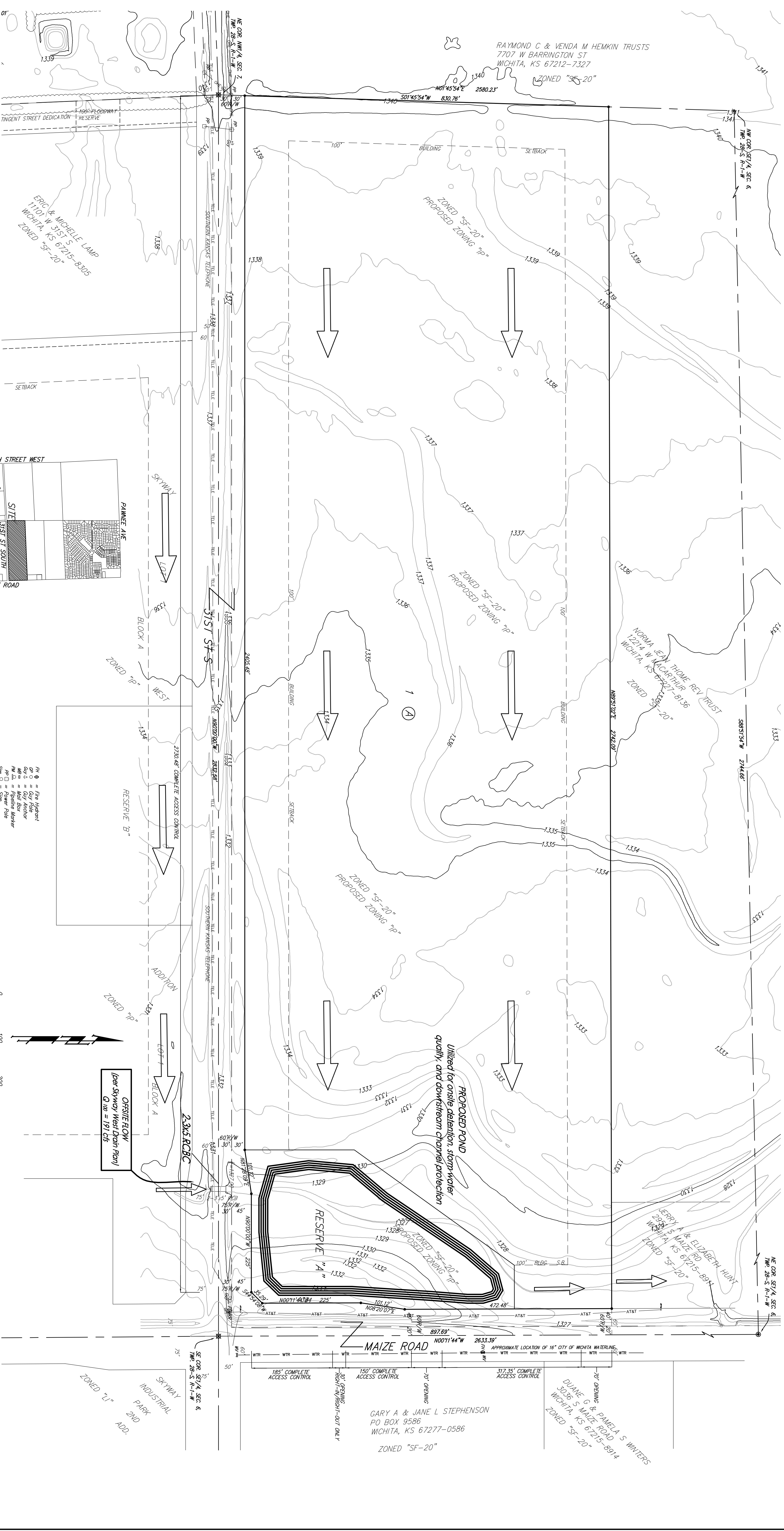


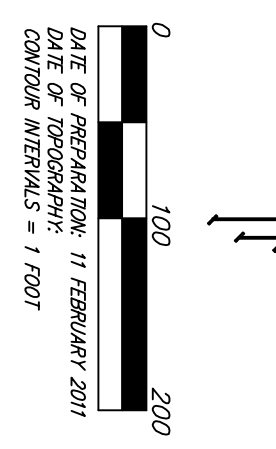
DRAINAGE CONCEPT

SKYWAY WEST 3RD ADDITION

WICHITA, SEDGWICK COUNTY, KANSAS



- | | |
|--------|---------------|
| PA | Pre Hydroplan |
| WJ | Water Joints |
| WJ 2 | Water Joints |
| WJ 3 | Water Joints |
| WJ 4 | Water Joints |
| WJ 5 | Water Joints |
| WJ 6 | Water Joints |
| WJ 7 | Water Joints |
| WJ 8 | Water Joints |
| WJ 9 | Water Joints |
| WJ 10 | Water Joints |
| WJ 11 | Water Joints |
| WJ 12 | Water Joints |
| WJ 13 | Water Joints |
| WJ 14 | Water Joints |
| WJ 15 | Water Joints |
| WJ 16 | Water Joints |
| WJ 17 | Water Joints |
| WJ 18 | Water Joints |
| WJ 19 | Water Joints |
| WJ 20 | Water Joints |
| WJ 21 | Water Joints |
| WJ 22 | Water Joints |
| WJ 23 | Water Joints |
| WJ 24 | Water Joints |
| WJ 25 | Water Joints |
| WJ 26 | Water Joints |
| WJ 27 | Water Joints |
| WJ 28 | Water Joints |
| WJ 29 | Water Joints |
| WJ 30 | Water Joints |
| WJ 31 | Water Joints |
| WJ 32 | Water Joints |
| WJ 33 | Water Joints |
| WJ 34 | Water Joints |
| WJ 35 | Water Joints |
| WJ 36 | Water Joints |
| WJ 37 | Water Joints |
| WJ 38 | Water Joints |
| WJ 39 | Water Joints |
| WJ 40 | Water Joints |
| WJ 41 | Water Joints |
| WJ 42 | Water Joints |
| WJ 43 | Water Joints |
| WJ 44 | Water Joints |
| WJ 45 | Water Joints |
| WJ 46 | Water Joints |
| WJ 47 | Water Joints |
| WJ 48 | Water Joints |
| WJ 49 | Water Joints |
| WJ 50 | Water Joints |
| WJ 51 | Water Joints |
| WJ 52 | Water Joints |
| WJ 53 | Water Joints |
| WJ 54 | Water Joints |
| WJ 55 | Water Joints |
| WJ 56 | Water Joints |
| WJ 57 | Water Joints |
| WJ 58 | Water Joints |
| WJ 59 | Water Joints |
| WJ 60 | Water Joints |
| WJ 61 | Water Joints |
| WJ 62 | Water Joints |
| WJ 63 | Water Joints |
| WJ 64 | Water Joints |
| WJ 65 | Water Joints |
| WJ 66 | Water Joints |
| WJ 67 | Water Joints |
| WJ 68 | Water Joints |
| WJ 69 | Water Joints |
| WJ 70 | Water Joints |
| WJ 71 | Water Joints |
| WJ 72 | Water Joints |
| WJ 73 | Water Joints |
| WJ 74 | Water Joints |
| WJ 75 | Water Joints |
| WJ 76 | Water Joints |
| WJ 77 | Water Joints |
| WJ 78 | Water Joints |
| WJ 79 | Water Joints |
| WJ 80 | Water Joints |
| WJ 81 | Water Joints |
| WJ 82 | Water Joints |
| WJ 83 | Water Joints |
| WJ 84 | Water Joints |
| WJ 85 | Water Joints |
| WJ 86 | Water Joints |
| WJ 87 | Water Joints |
| WJ 88 | Water Joints |
| WJ 89 | Water Joints |
| WJ 90 | Water Joints |
| WJ 91 | Water Joints |
| WJ 92 | Water Joints |
| WJ 93 | Water Joints |
| WJ 94 | Water Joints |
| WJ 95 | Water Joints |
| WJ 96 | Water Joints |
| WJ 97 | Water Joints |
| WJ 98 | Water Joints |
| WJ 99 | Water Joints |
| WJ 100 | Water Joints |



OFFSITE FLOW
(per Skyway West Drain Plan)
Q₁₀₀ = 191 cfs

PROPOSED POND
Utilized for onsite detention, storm-water
quality, and downstream channel protection

DRAINAGE CONCEPT

SKYWAY WEST 3RD ADDITION

Baughman Company, P.A.
315 E. 10th St., Wichita, KS 67202
Tel: 316.262.2771 | Fax: 316.262.0049
E: PROJECTS@BAUGHMAN.COM | I: BAUGHMAN.COM

GARY A & JANE L STEPHENSON
PO BOX 9586
WICHITA, KS 67277-0586
ZONED "SF-20"

DUANE G & PAMELA S WINTERS
3036 S MAIZE ROAD
WICHITA, KS 67215-8914
ZONED "SF-20"

JERRY A & ELIZABETH HUNT
2923 S MAIZE RD
WICHITA, KS 67215-8914
ZONED "SF-20"

NORMA JEAN THOME REV TRUST
12214 W MCARTHUR BLVD
WICHITA, KS 67227-8136
ZONED "SF-20"

RAYMOND C & VENDA M HEMKIN TRUSTS
7707 W BARRINGTON ST
WICHITA, KS 67212-7327
ZONED "SF-20"

ERIC & MICHELLE LAMP
11101 W 31ST S
WICHITA, KS 67215-8305
ZONED "SF-20"