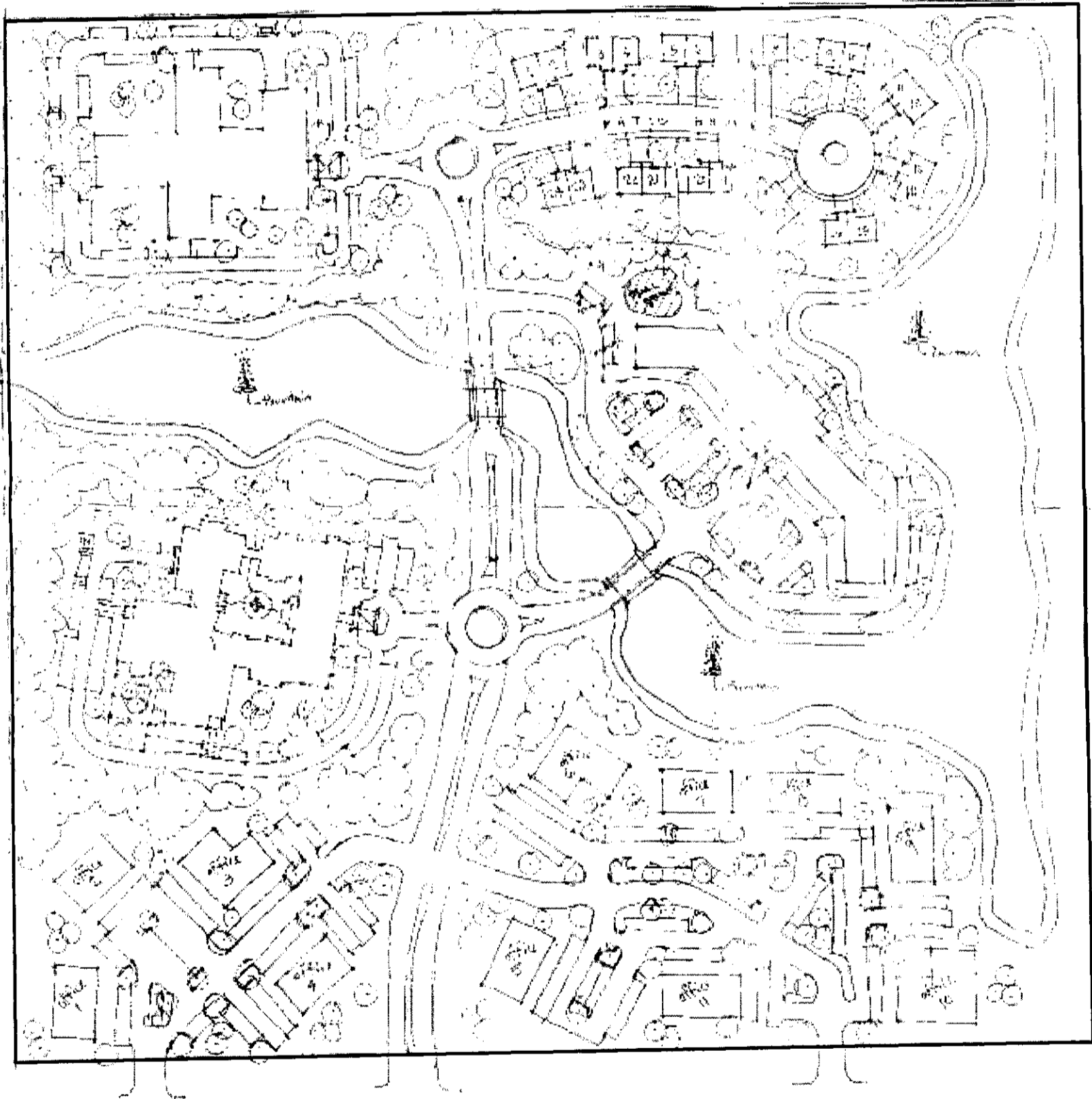


NEWMARKET OFFICE 2ND

CONCEPTUAL SITE PLAN



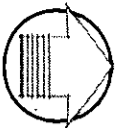
29TH STREET NORTH

**DRAWING CONFIDENTIALITY -
WE REQUEST THAT THE CONTENTS OF
THIS SITE PLAN BE KEPT CONFIDENTIAL.
IT IS PROVIDED FOR PLANNING STAFF
REFERENCE ONLY AND IS NOT TO BE
DISPLAYED AT THE PUBLIC MEETINGS.**



SCALE: 1" = 200'

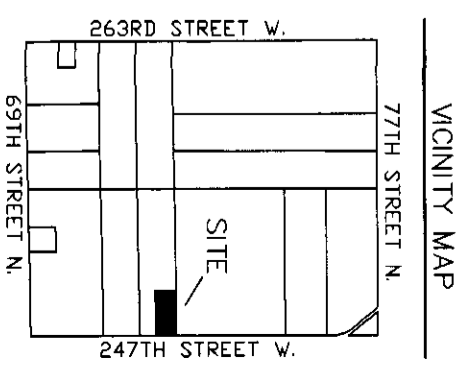
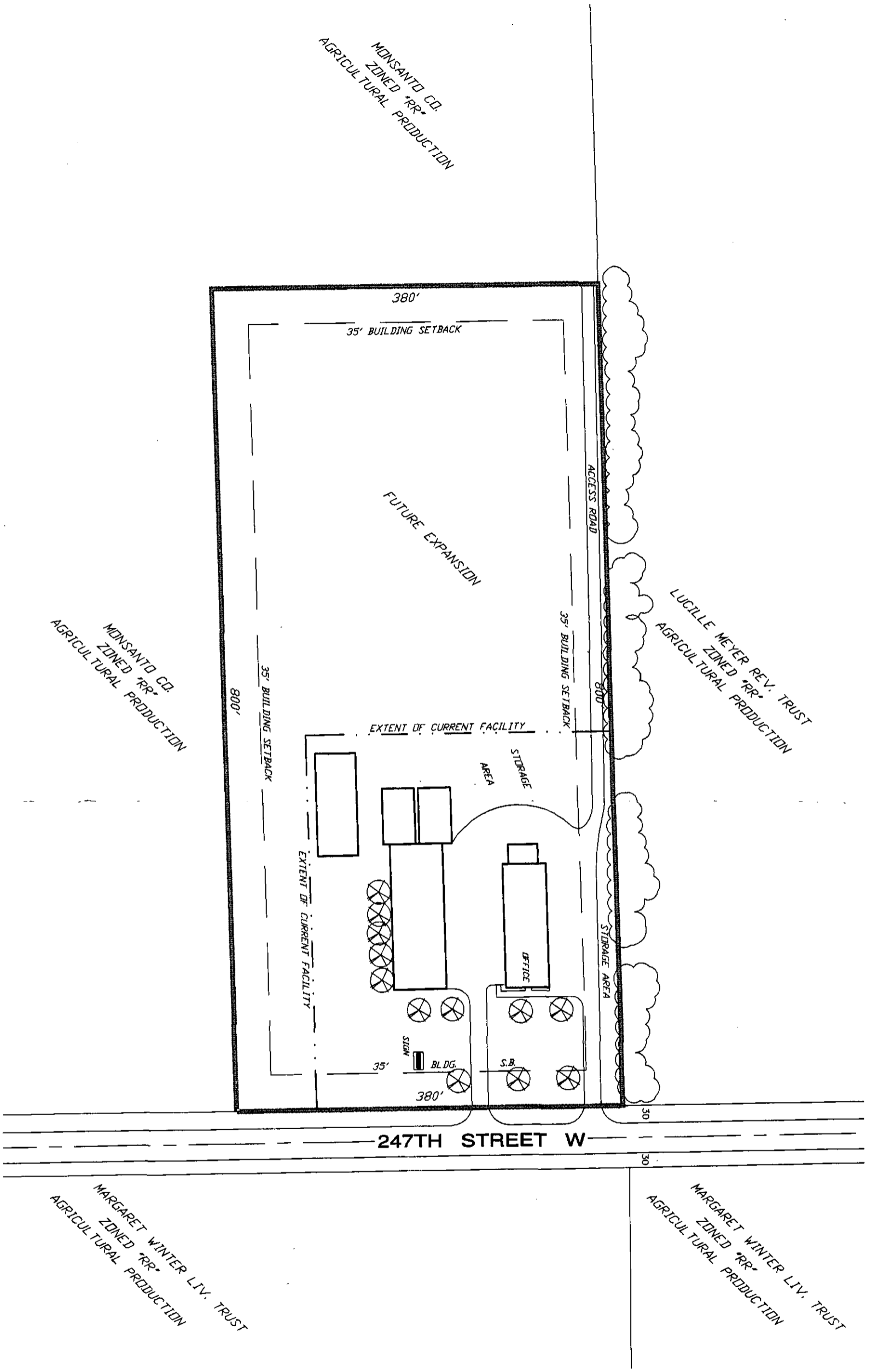
JANUARY 27, 2011



SCALE: 1" = 100'

SITE PLAN - CON2010-55

MONSANTO COMPANY - ANDALE, KANSAS



LEGAL DESCRIPTION

That part of the Southeast 1/4 of Sec. 3, Twp. 26-S., R-3-W of the 6th P.M., Sedgwick County, Kansas described as follows: Beginning at the Northeast corner of said Southeast 1/4; thence south along the east line of said Southeast 1/4, 380 feet; thence west parallel with the north line of said Southeast 1/4, 830 feet; thence north parallel with the east line of said Southeast 1/4, 380 feet; thence east along the north line of said Southeast 1/4, 830 feet to the point of beginning; EXCEPT that part taken for road right-of-way or record.

