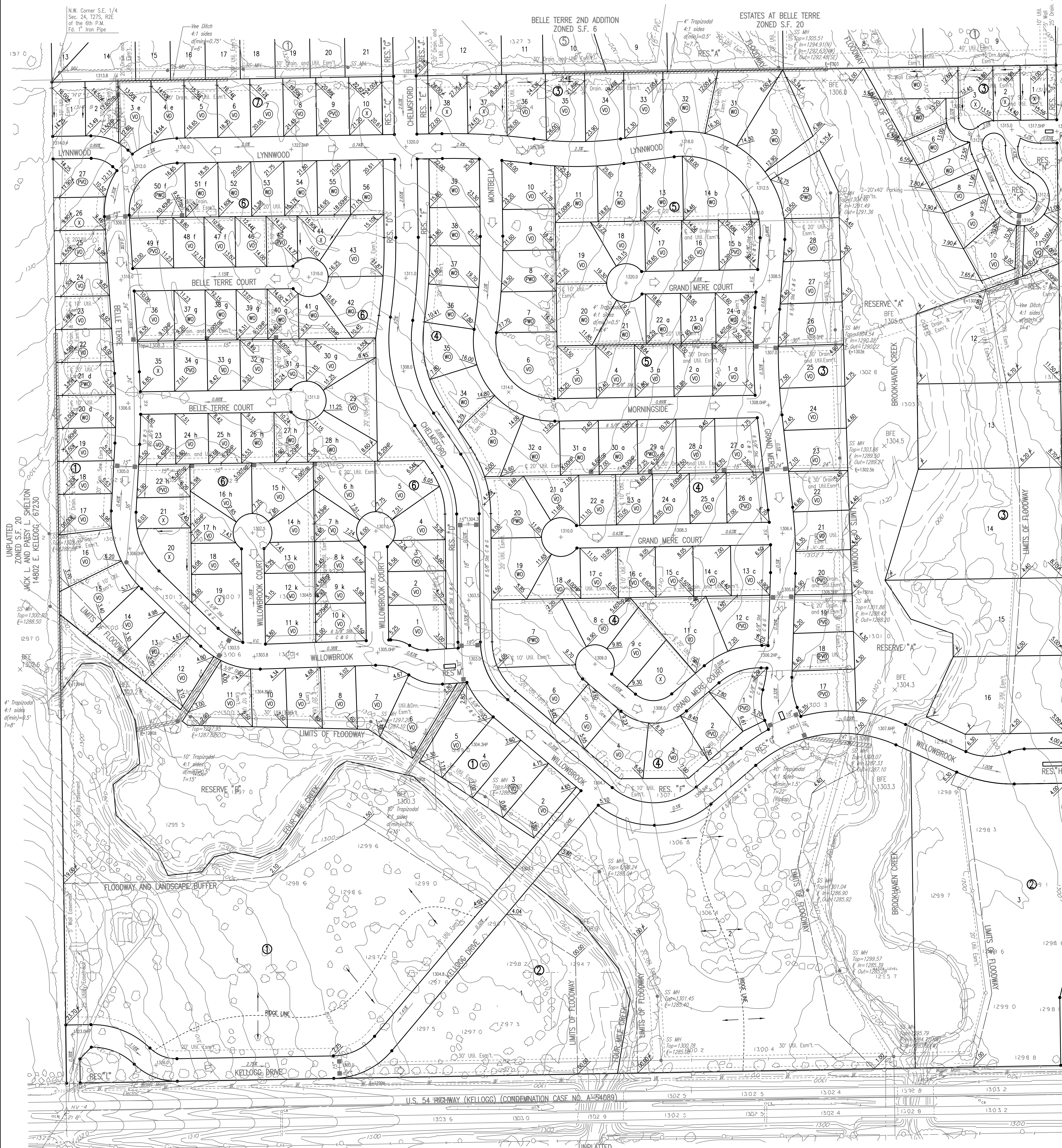


FOUR CORNER LOT GRADING PLAN
BELLE TERRE SOUTH
 AN ADDITION TO SEDGWICK COUNTY, KANSAS

2	ELEVATIONS IN PHASE 4	BDB	5-99
1	ELEVATIONS IN PHASE 1	BDB	10-97
No.	Revision	By	Date



SCALE: 1"=100'
 ● = IRON SET

B.M. - 604 NAIL ON TOP OF ORANGE POST 15' NORTH OF N.W. CORNER WEST 150TH STREET EAST, APPROX. 500' WEST OF 159TH STREET EAST. ELEV.=1301.61 M.S.L.

B.M. - U.S.G.S. STANDARD TABLE 75' NORTH AND 42' EAST OF S.E. CORNER SEC. 24, AT U.S. 54 AND 159TH STREET EAST. ELEV.=1301.83 M.S.L.

- LEGEND**
- MAJOR STORMWATER FLOW
 - MINOR STORM WATER FLOW
 - STORM SEWER AND INLET
 - STORM SEWER AND MANHOLE
 - PROPOSED SANITARY SEWER
 - CROWN ELEVATION
 - HIGH POINT ELEVATION
 - MATCH EXISTING ELEVATION
 - BASE FLOOD ELEVATION
 - VIEWOUT BASEMENT
 - WALKOUT BASEMENT
 - POSSIBLE VIEWOUT BASEMENT
 - POSSIBLE WALKOUT BASEMENT
 - FULL FOUNDATION
 - 4 CORNER LOT ELEVATION (ADD 1300 TO GET M.S.L.)

DATUM FOR ALL ELEVATION IS MEAN SEA LEVEL.
 SEE STREET DESIGN PLANS FOR UPDATED STREET GRADES.
 SEE SANITARY SEWER PLANS FOR UPDATED FLOWLINE DATA.
 WALK GRADE IS 0.5' ABOVE TOP OF CURB UNLESS NOTED.

MINIMUM PAD ELEVATIONS (LOWEST OPENING) AS FOLLOWS:

BLOCK	LOTS	ELEVATION
BLOCK 1:	1	1303.2 M.S.L.
	2 THROUGH 6	1301.3 M.S.L.
	7 THROUGH 10	1302.5 M.S.L.
	11 THROUGH 13	1303.2 M.S.L.
	14 THROUGH 17	1303.6 M.S.L.
BLOCK 2	18 THROUGH 21	1304.2 M.S.L.
	22	1300.0 M.S.L.
BLOCK 3	2 AND 3	1304.3 M.S.L.
	4, 5, 30 AND 31	1307.0 M.S.L.
BLOCK 4	6 THROUGH 8 AND 28, 29	1306.0 M.S.L.
	9 AND 10, 26, 27	1306.5 M.S.L.
	12 THROUGH 14	1305.5 M.S.L.
	19 THROUGH 25	1305.5 M.S.L.
	15 THROUGH 18	1305.3 M.S.L.

- ADDITIONAL LOT REQUIREMENTS**
- a - MIN. OPENING ≥ 1309.00
 - b - MIN. OPENING ≥ 1311.50
 - c - MIN. OPENING ≥ 1308.00
 - d - MIN. OPENING ≥ 1304.40
 - e - MIN. OPENING ≥ 1314.50
 - f - MIN. OPENING ≥ 1311.40
 - g - MIN. OPENING ≥ 1310.10
 - h - MIN. OPENING ≥ 1307.40
 - k - MIN. OPENING ≥ 1306.75

UNPLATTED ZONED S.F. 20
 JACK L. AND PAISY L. SHELTON
 14802 E. KELLOGG / 67230

S.E. Corner S.E. 1/4
 Sec. 24, T27S, R2E
 of the 6th P.M.
 Fd. 5/8" Rebar in Thimble

UNPLATTED ZONED S.F. 20

Saved: 06-04-2007 2:11:11 PM by JSH.L.SULLIVAN
 Plot Scale: 1:100 05-10-2011 4:16:47 PM by JSH.L.SULLIVAN