

Lindebak, Scott

From: Greg Allison [gallison@Mkec.com]
Sent: Tuesday, May 10, 2011 4:56 PM
To: Lindebak, Scott; Gunzelman, Paul; Kallman, Julianne
Cc: Strahl, Neil; Gene Rath; Brian Lindebak
Subject: RE: 37th St. Improv Pdfs
Attachments: 10582_PavPP.pdf - Adobe Acrobat.pdf

~~HAMPTON SQUARE ZND ADD~~

From: Lindebak, Scott [mailto:SLindebak@wichita.gov]
Sent: Tuesday, May 10, 2011 4:19 PM
To: Greg Allison; Gunzelman, Paul; Kallman, Julianne
Cc: Strahl, Neil
Subject: RE: 37th St. Improv Pdfs

Greg,

Where is the concrete ditch located in plan view? I have enclosed an updated plan with this e-mail. The flume is approximately 10 ft south of the existing 60 ft right of way.

Do you have 2.4' of depth the entire length of the flumes construction? Yes, it is generally 2.5 – 3.0 ft deep.

The sidewalk easement needs to include drainage and utility to allow access to maintain utilities and drainage on the other side of the concrete flume. ok

What size of pipe and flowline will be under the proposed street entrance off of 37th Street. I am verifying this size and will get it to you.

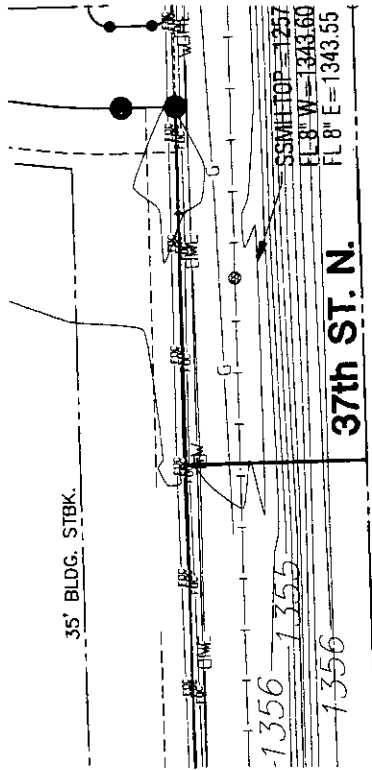
It appears Reserve A median interferes with pedestrian movement and is a hazard. The Traffic Engineer should comment on its layout with the proposed sidewalk. We will move it north so as to accommodate a 6 ft. sidewalk.

The developer will need to submit a sidewalk petition to connect the Hampton Lakes Residential/Commercial Development to Maize Road based on the proposed layout. I will review this with engineering. Typically when the road improvements are made on an arterial the sidewalk is installed with that project. We will petition for the flume construction.

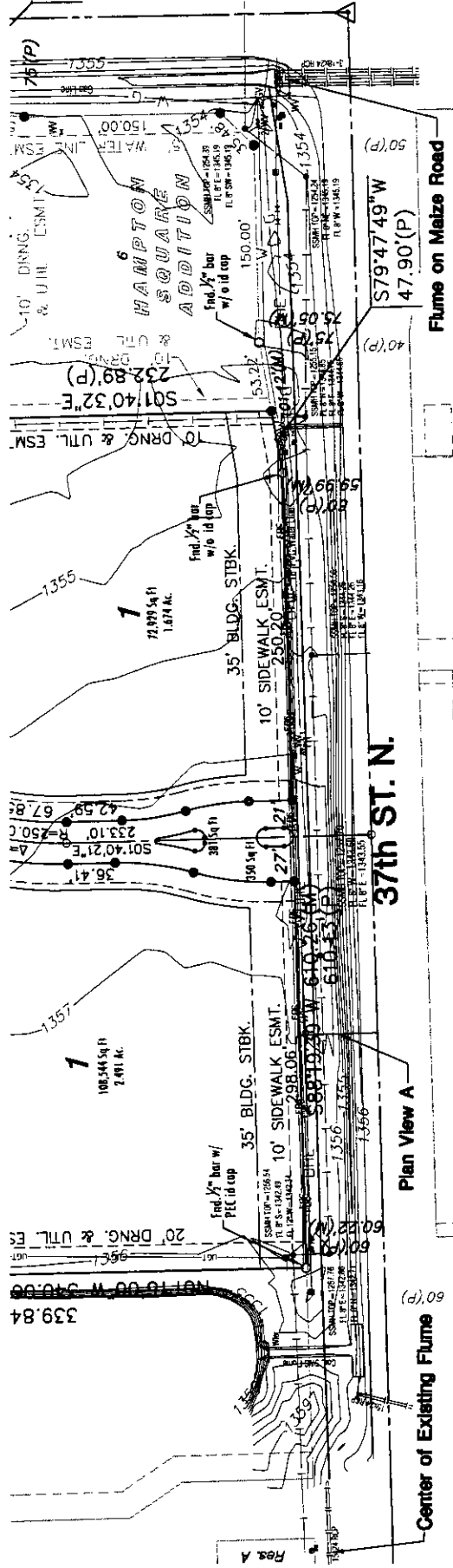
From: Greg Allison [mailto:gallison@Mkec.com]
Sent: Tuesday, May 10, 2011 3:45 PM
To: Lindebak, Scott
Subject: Fwd: 37th St. Improv Pdfs

Call me to discuss.

Greg



PLAN VIEW A
SCALE: 1"=40'



OVERALL PLAN VIEW
SCALE: 1"=40'

Project: 2011\101101022 - Premier Highway Series 2nd-Cd\CD\37th\10222_PlanView.dwg

37TH STREET IMPROVEMENTS

Cross Sections
 SHEET NO. 10828
 DATE: 11/11/09

PROJECT: G/A

DESIGNER: LES

REVISION: G/A

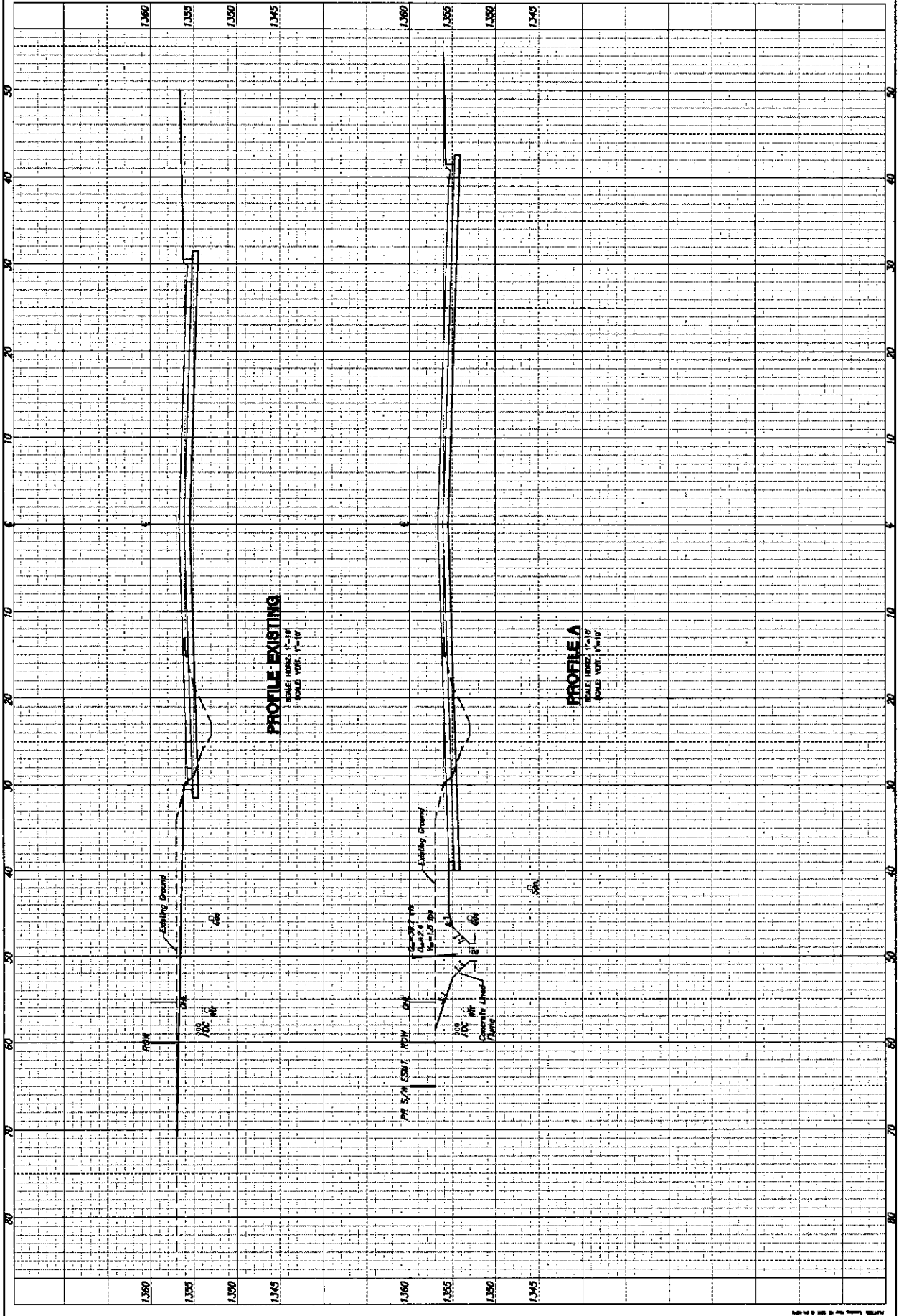
CHECKED: G/A

DATE: May 10, 2011

PROJECT:

PROJECT:

Sheet No. 2 of 3



MKEC
 ENGINEERING
 CONSULTANTS, INC.
 411 N. WISS ROAD
 WICHITA, KS 67208
 TEL: 620-692-9699

37TH STREET IMPROVEMENTS

Profile
 DATE: 04/10/11
 DRAWN BY: LES
 CHECKED BY: GJA

QA
 DESIGNED BY: LES
 CHECKED BY: GJA

DATE: Apr 10, 2011
 PROJECT: 37th Street

Sheet No. 5 of 5

