

UNIVERSITY

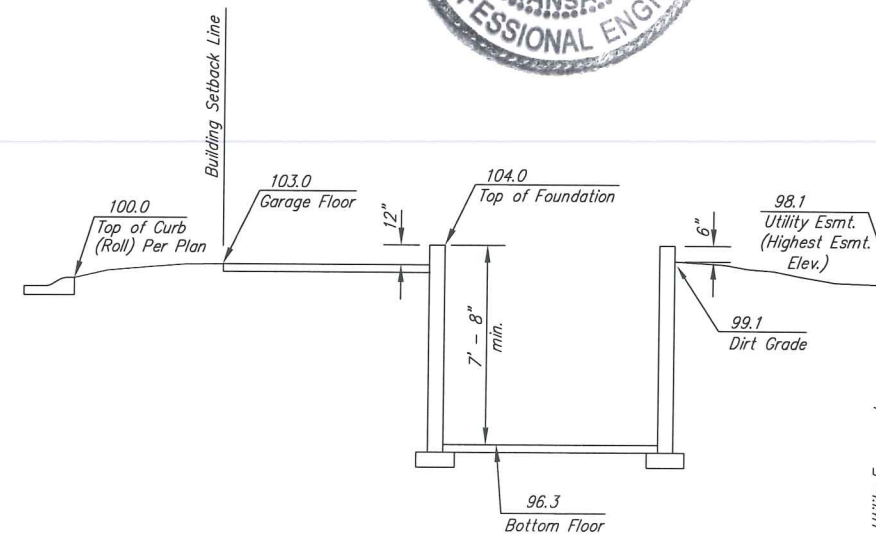
LOT SPLIT

PARCEL A
 Lots 2, 4 and the north 4.00 feet of Lot 6, Block 8, Quincy Addition to Wichita (Sedgwick County), Kansas. 7,314 Sq. Ft.±

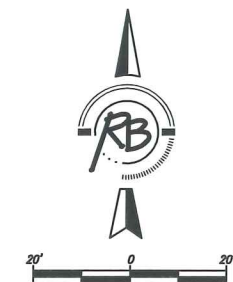
PARCEL B
 Lot 6, EXCEPT the north 4.00 feet thereof, TOGETHER WITH Lot 8 and the north 2.00 feet of Lot 10, Block 8, Quincy Addition to Wichita (Sedgwick County), Kansas. 6,502 Sq. Ft.±

PARCEL C
 Lot 10, EXCEPT the north 2.00 feet thereof, TOGETHER WITH Lot 12, Block 8, Quincy Addition to Wichita (Sedgwick County), Kansas. 6,501 Sq. Ft.±

Note:
 Regrade rear swale as indicated.

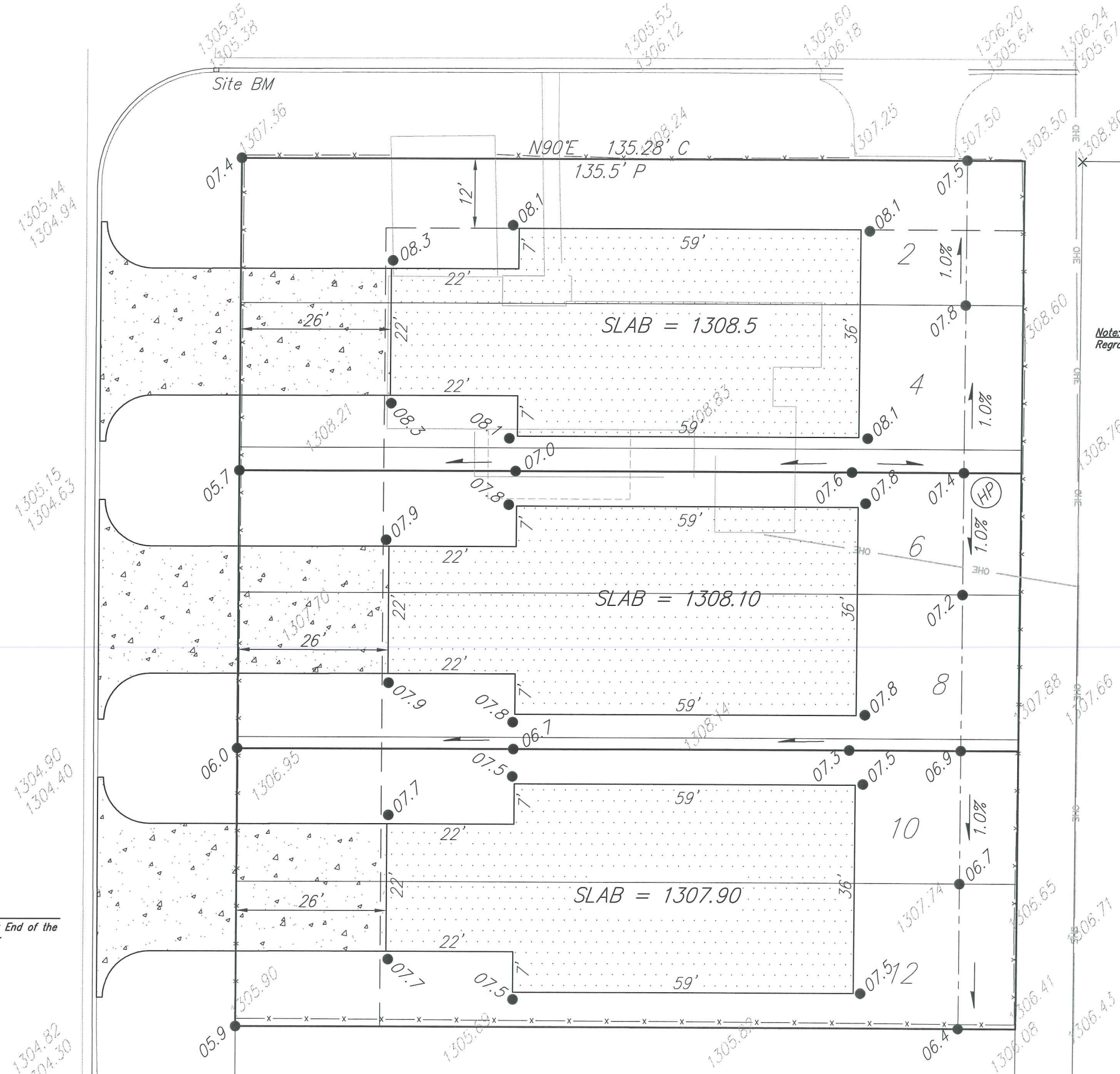


Section Through Typical Lot



KESSLER

BENCHMARK
 Cut in Top of Curb at the East End of the SE Return of University and Kessler
 Elevation 1305.95 MSL (88 Datum)



PARCELS A THRU C, BLK 8, QUINCY ADDITION GRADING PLAN WICHITA, KANSAS			
	Ruggles & Bohm, P.A. Engineering, Surveying, Land Planning		
	924 North Main Wichita, Kansas 67203 www.rbkansas.com	(316) 264-8008 (316) 264-4621 fax E-mail: info@rbkansas.com	DESIGN: KWL DRAWN: RA REVIEW: RA UTILITY: RA
DRAWING FILE	PROJECT NUMBER	DATE	SHEET 1 OF 1