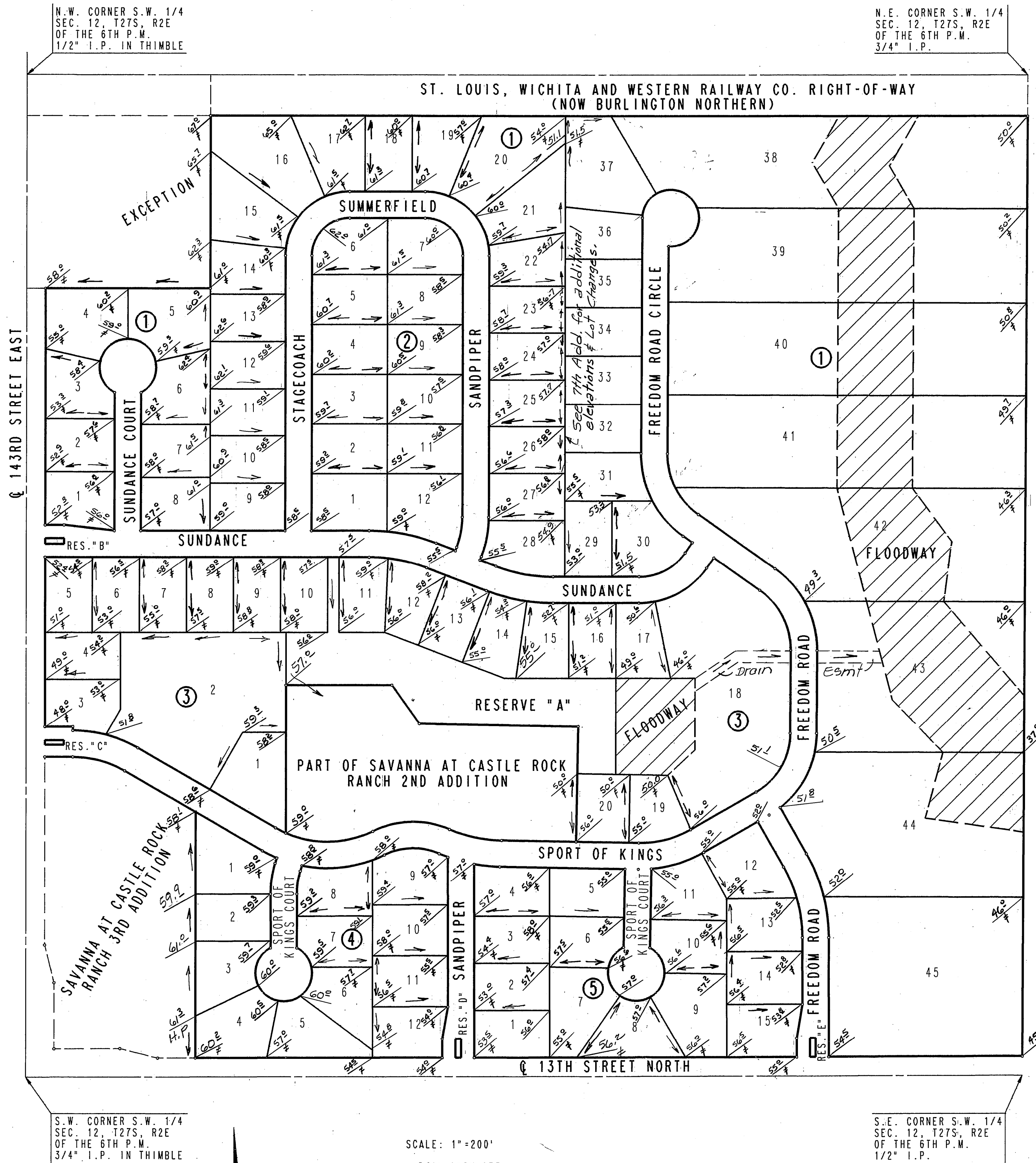


# FOUR CORNER GRADING PLAN

## SAVANNA AT CASTLE ROCK RANCH 5TH ADDITION TO SEDGWICK COUNTY, KANSAS



**LEGEND**

60.0 / Finish Grade Elev.  
(Add 1300 for M.S.L.)

≠ Match Exist. Grade

→ Flow Direction

H.P. High Point

SCALE: 1"=200'

• = 3/4" IRON SET

◦ = IRON FOUND

B.M. - RAILROAD SPIKE IN H.L.P. 43' S.E. OF S.W. CORNER SEC. 12, T27S, R2E OF THE 6TH P.M. ELEV. = 1352.87 M.S.L.

B.M. - RAILROAD SPIKE (1.5' ABOVE GROUND) IN WEST FACE OF POWER POLE ON EAST R/W OF 143RD STREET EAST AT 835' ± NORTH OF Q 13TH STREET NORTH. ELEV. = 1348.66 M.S.L.

[ZZ] FLOODWAY

MINIMUM PAD ELEVATION (LOWEST OPENING) SHALL BE AS FOLLOWS:

BLOCK 1	ELEV. 1346 M.S.L.
LOT 38	ELEV. 1344 M.S.L.
LOT 39	ELEV. 1343 M.S.L.
LOTS 40 AND 41	ELEV. 1342 M.S.L.
LOT 42	ELEV. 1341 M.S.L.
LOTS 43 AND 44	ELEV. 1341 M.S.L.
BLOCK 3	ELEV. 1356 M.S.L.
LOTS 11 THROUGH 15	ELEV. 1350 M.S.L.
LOTS 16 THROUGH 20	ELEV. 1350 M.S.L.

Revised Nov. 30, 1994  
Jan 10, 1994