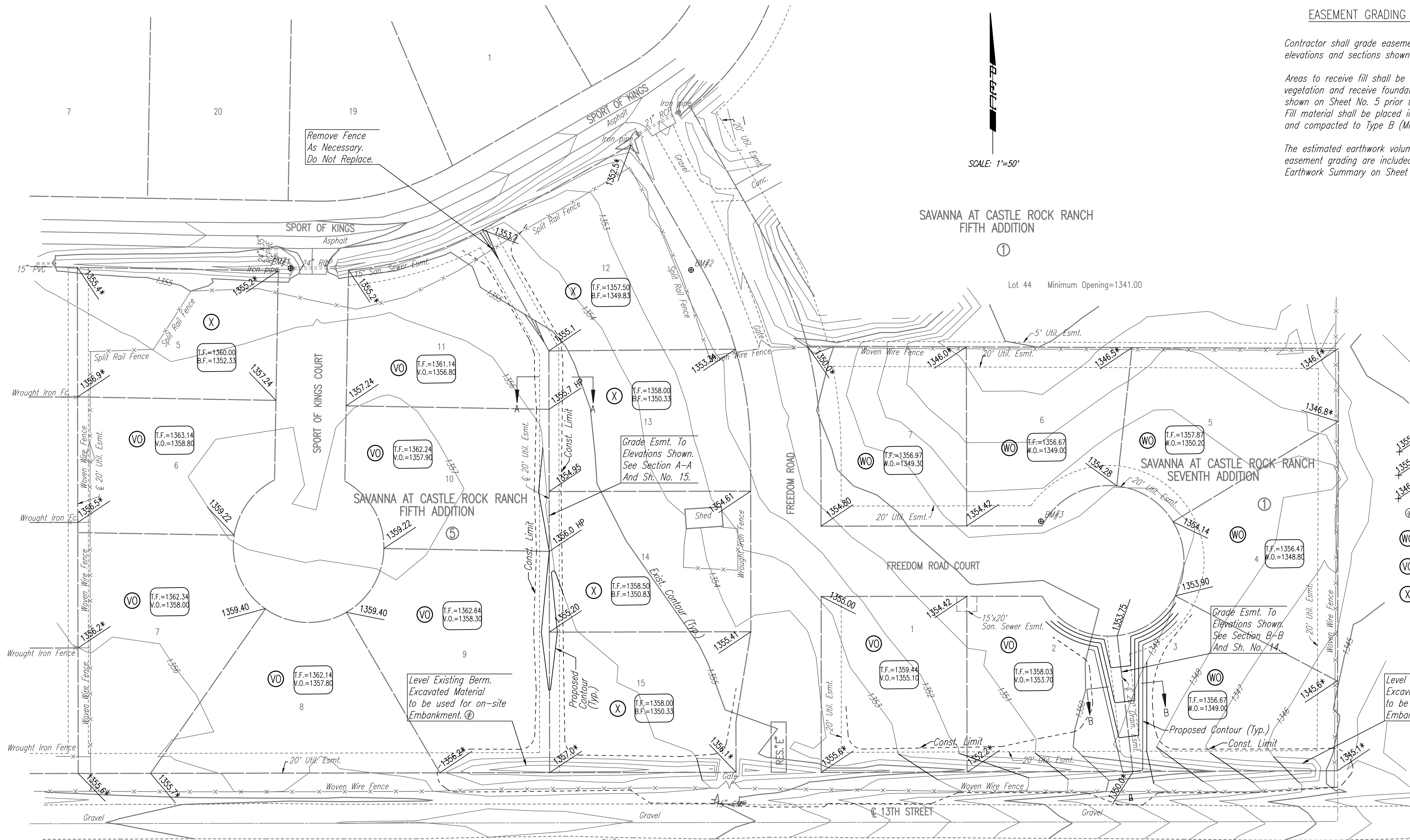
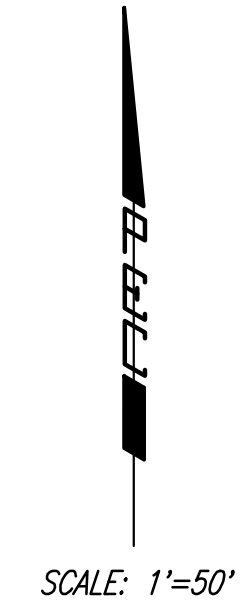


EASEMENT GRADING NOTES

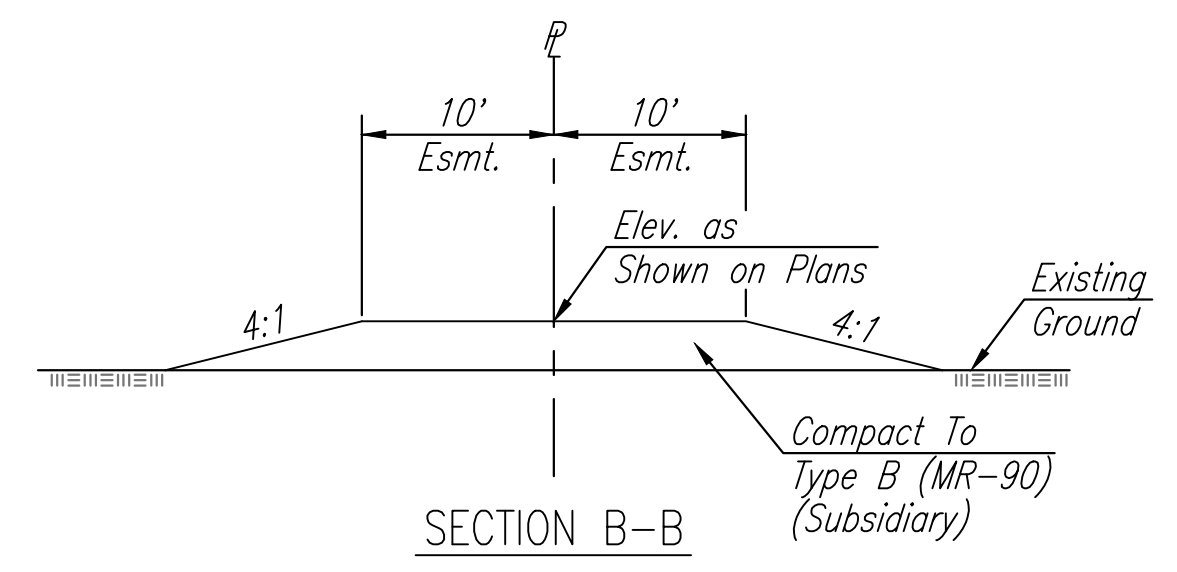
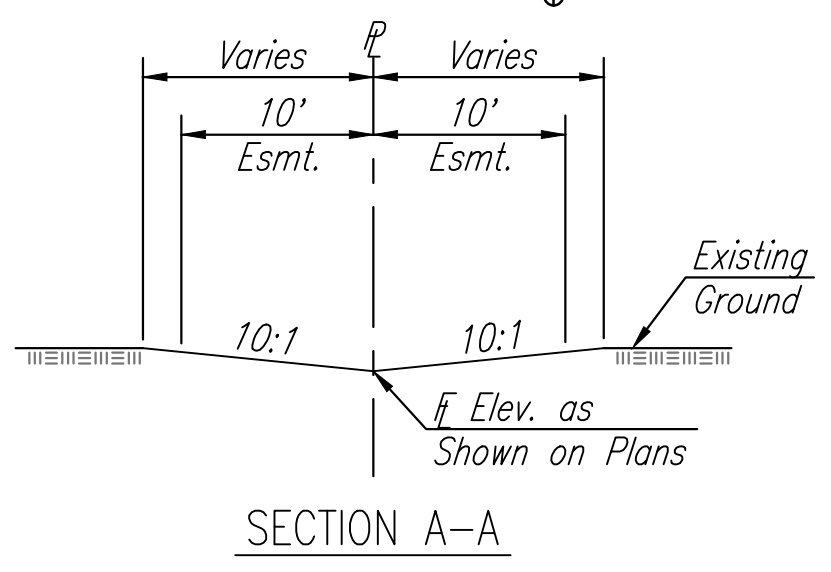
Contractor shall grade easements to the elevations and sections shown on this plan.

Areas to receive fill shall be stripped of vegetation and receive foundation treatment as shown on Sheet No. 5 prior to placement of fill. Fill material shall be placed in maximum 6" lifts and compacted to Type B (MR-90) requirements.

The estimated earthwork volumes for the easement grading are included in the Project Earthwork Summary on Sheet No. 5.



- LEGEND**
- ⊕ Proposed Elevation (High Point)
  - ⊙ Proposed Elevation
  - ⊙\* Proposed Elevation (Match Existing)
  - ⊕ Subsidiary to "Unclassified Excavation".
  - ⊙ WO Walk-Out Basement
  - ⊙ VO View-Out Basement
  - ⊙ X Standard Basement



DSNR, SAW OPER: SAW SCALE: 1"=50.00  
 C:\2003\03344\Corner 03-19-2004 09:54:09 am

No.	Revision	By	Date
SAVANNA AT CASTLE ROCK RANCH 5TH ADDITION-PHASE 4 & 7TH ADDITION-PHASE 3			
<b>FOUR CORNER PLAN</b>			
<b>Professional Engineering Consultants, P.A.</b> 303 S. TOPEKA • WICHITA, KANSAS 67202 316-262-2691 • FAX 316-262-3003			
Designed by	BDB, BLB	Job No.	35-03344-000
Drawn by	BJS, SAW	Date	MARCH 2004
			Sheet 1 of 1

