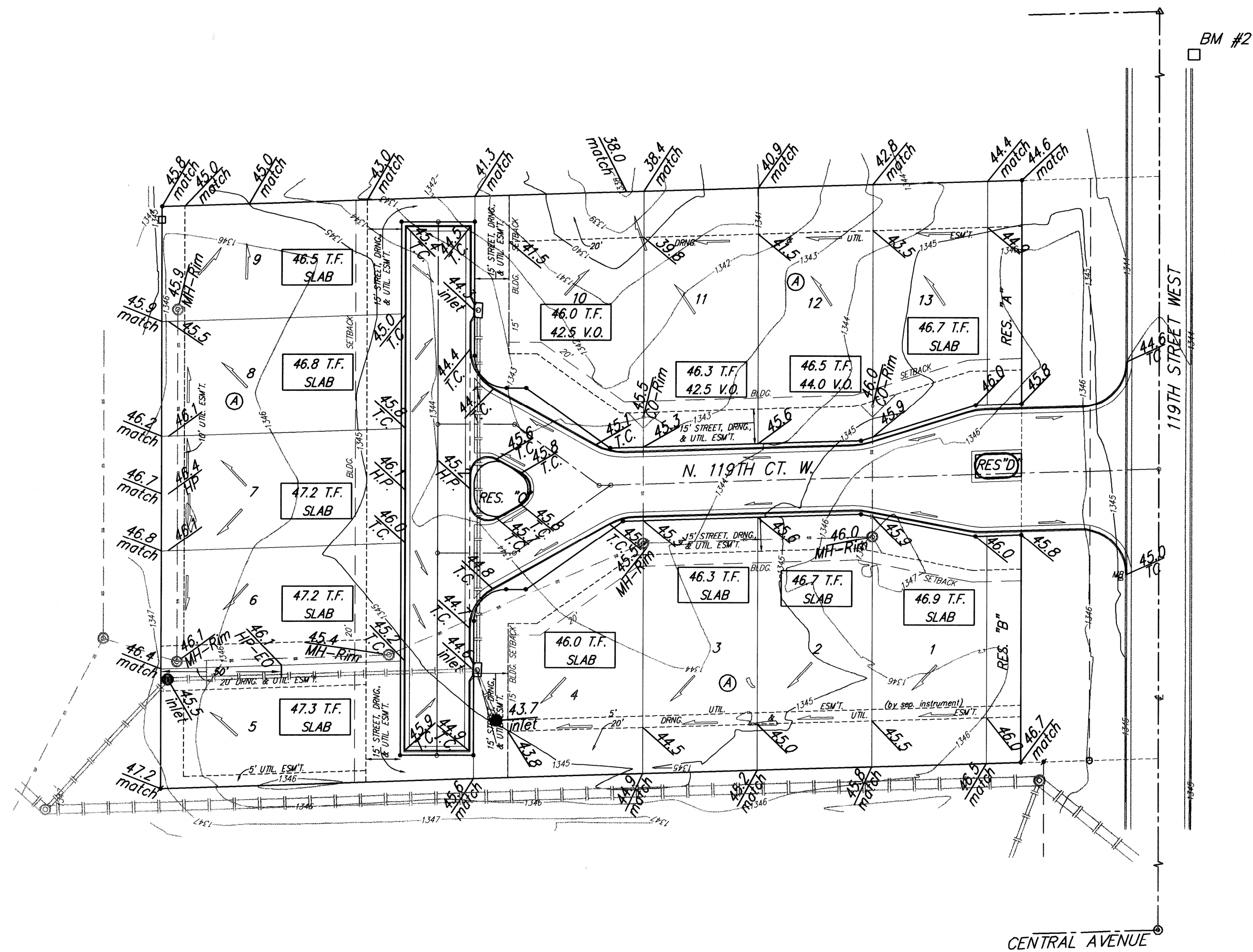
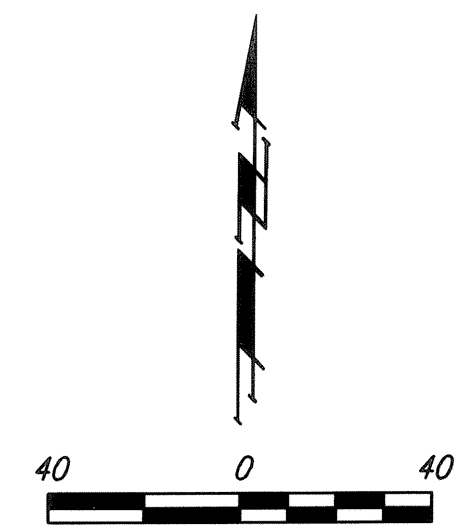


BENCHMARKS:  
 BM #1: City of Wichita  
 Benchmark Disc - 119th St. W.  
 & Lost Creek (Cowskin) 175' +/-  
 north of Lost Creek Circle, SW  
 corner of RCB, South end of  
 Hubguard. Elev. = 1339.22  
 (NGVD29)

BM #2: "□" Cut Top of Curb  
 Adjacent to Fire Hydrant, East  
 of house #927. Elev. = 1342.13  
 (NGVD29)



**NOTES:**

1. PROPOSED TOP OF FOUNDATION ELEVATIONS ARE SHOWN ON PLANS. CONTRACTOR TO SET FINISHED FLOOR AND GARAGE FLOOR ELEVATIONS. ALL STREET ELEVATIONS SHOWN ON PLANS ARE FOR TOP OF CURB (FULL-HEIGHT).

2. THIS GRADING PLAN IS DESIGNED WITH VIEW-OUTS AND SLAB FLOOR ELEVATIONS SHOWN AS XX.X V.O. DEPICT VIEW-OUT STRUCTURES. ELEVATIONS SHOWN AS SLAB DEPICT SLAB FLOOR STRUCTURES.

3. ALL LOTS SHALL MEET MINIMUM PAD REQUIREMENT AS SHOWN ON THE RECORDED PLAT.

**MINIMUM BUILDING PAD ELEVATIONS FOR LOWEST OPENING TO THE STRUCTURES**

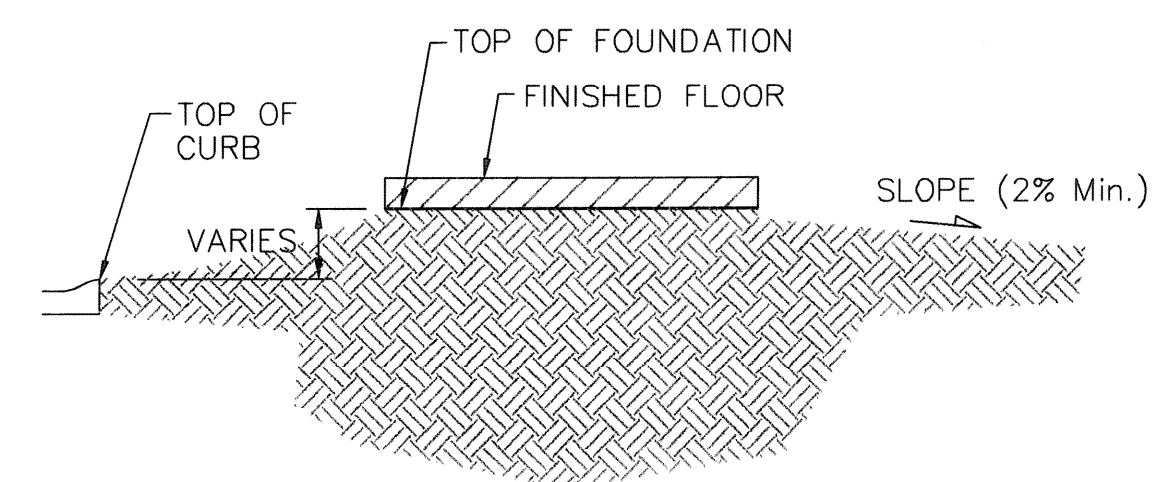
LOT	BLOCK	ELEVATION
		NGVD29
5-9	A	1,336.40

4. LOT DIMENSIONS HAVE BEEN OMITTED ON THIS PLAN. REFER TO THE RECORDED PLAT FOR FINAL DIMENSION, EASEMENT, & BUILDING SETBACK INFORMATION.

5. HOUSE PAD ELEVATIONS DEPICTED WITH BOLD OUTLINES AND NOTED WITH THIS SYMBOL **⊕** INDICATE THAT DEEP FOOTINGS OR DEEP FOUNDATIONS MAY BE REQUIRED.

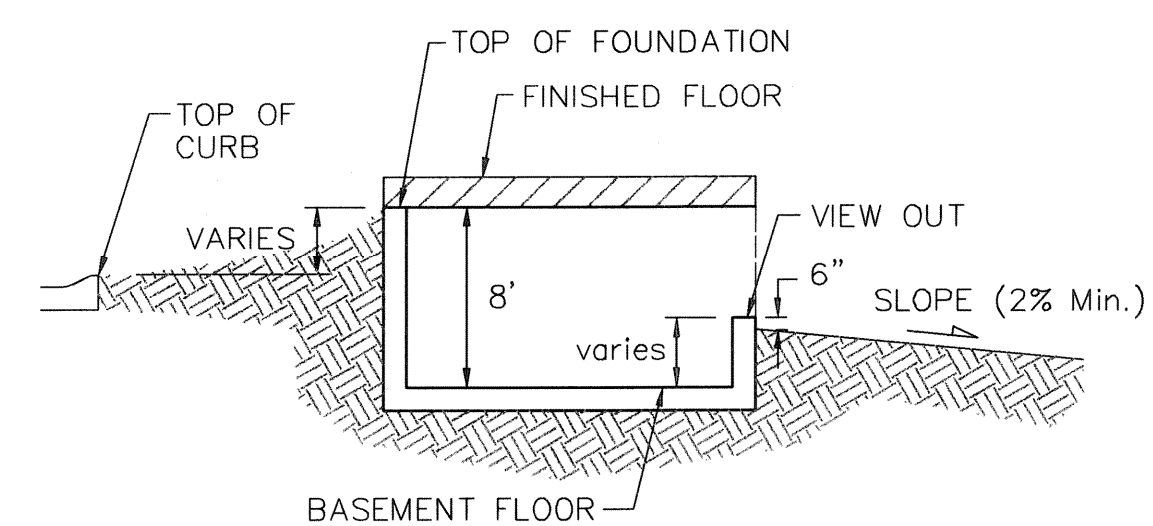
6. A DRAINAGE PLAN HAS BEEN DEVELOPED FOR THIS SUBDIVISION AND IS ON FILE WITH THE CITY OF WICHITA, KANSAS. DRAINAGE INTENT SHALL REMAIN AS DEPICTED OR AS MODIFIED WITH THE APPROVAL OF THE CITY ENGINEER OF THE CITY OF WICHITA, KANSAS. NO OBSTRUCTIONS WHICH IMPEDE THE FLOW OF THIS DRAINAGE PLAN SHALL BE ALLOWED.

7. ALL ELEVATIONS SHOWN ARE NGVD29 DATUM.



**TYPICAL SLAB DETAIL**

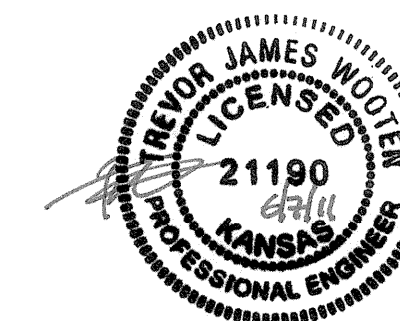
NO SCALE



**TYPICAL VIEW OUT DETAIL**

NO SCALE

Existing Grade



**Baughman** KOKER ADDITION  
**GRADING PLAN**  
 WICHITA, KANSAS

Baughman Company, P.A. 315 E. 18th St. Wichita, KS 67211 P 316-262-2271 F 316-262-0149  
 ENGINEERING | SURVEYING | PLANNING | LANDSCAPE ARCHITECTURE

PROJECT NUMBER	DESIGN	DRAWN
	TJW	TMS
REVISIONS	APPROVED	DATE
		06/11
	SCALE	
	Noted	
	SHEET	
		<b>1 OF 1</b>