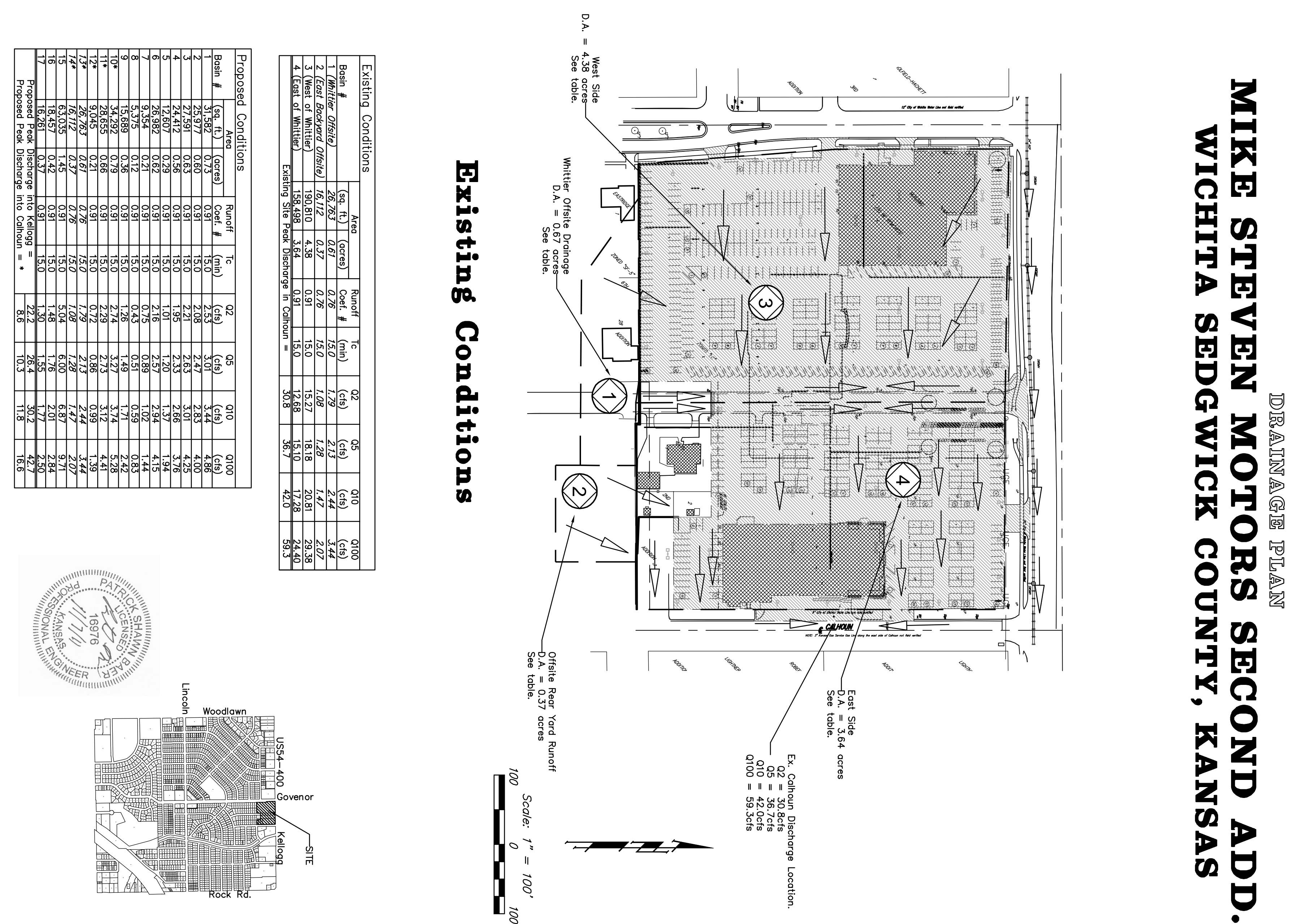
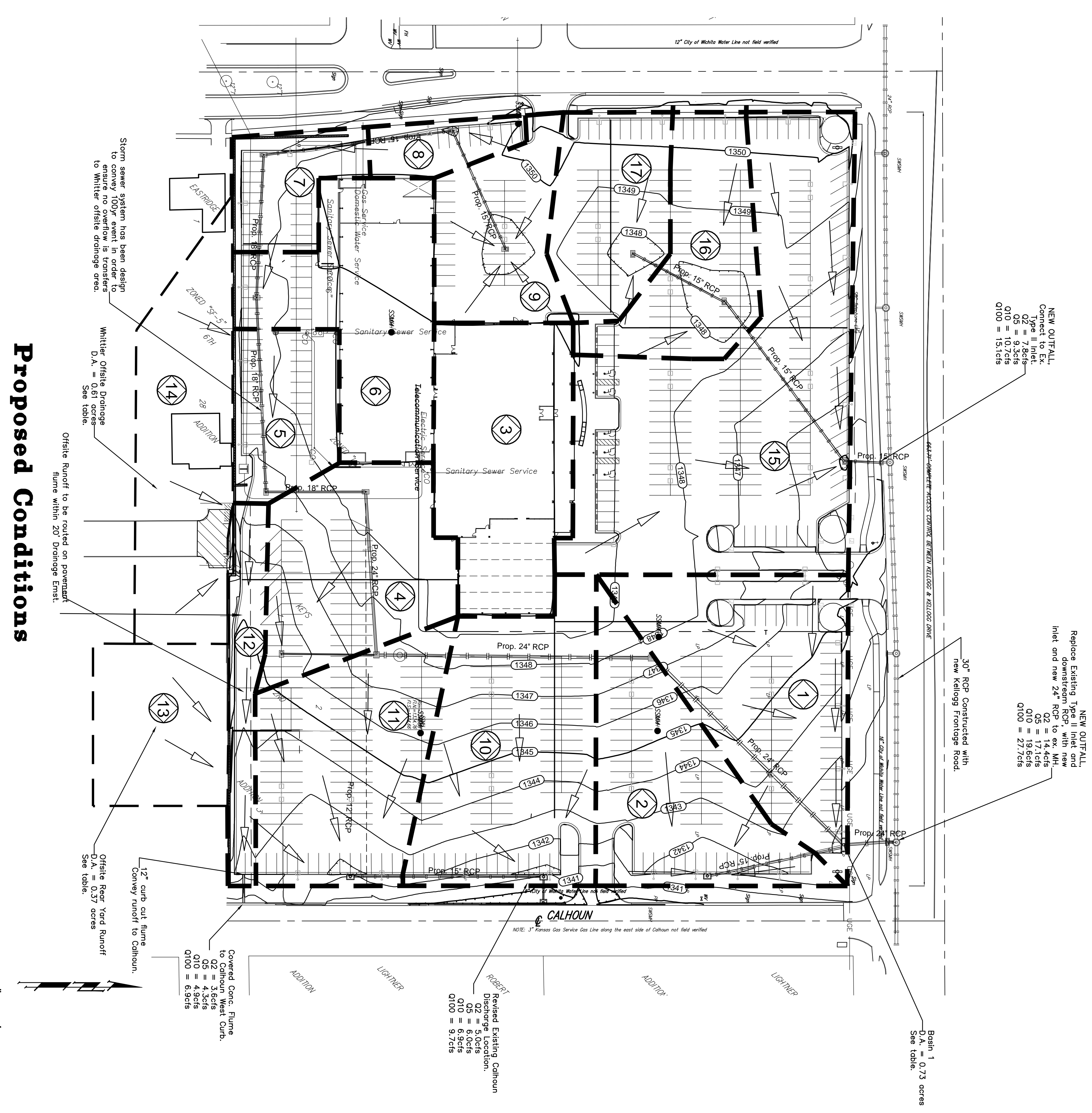


DRAINAGE PLAN

MIKE STEVEN MOTORS SECOND ADD.

WICHITA SEDGWICK COUNTY, KANSAS

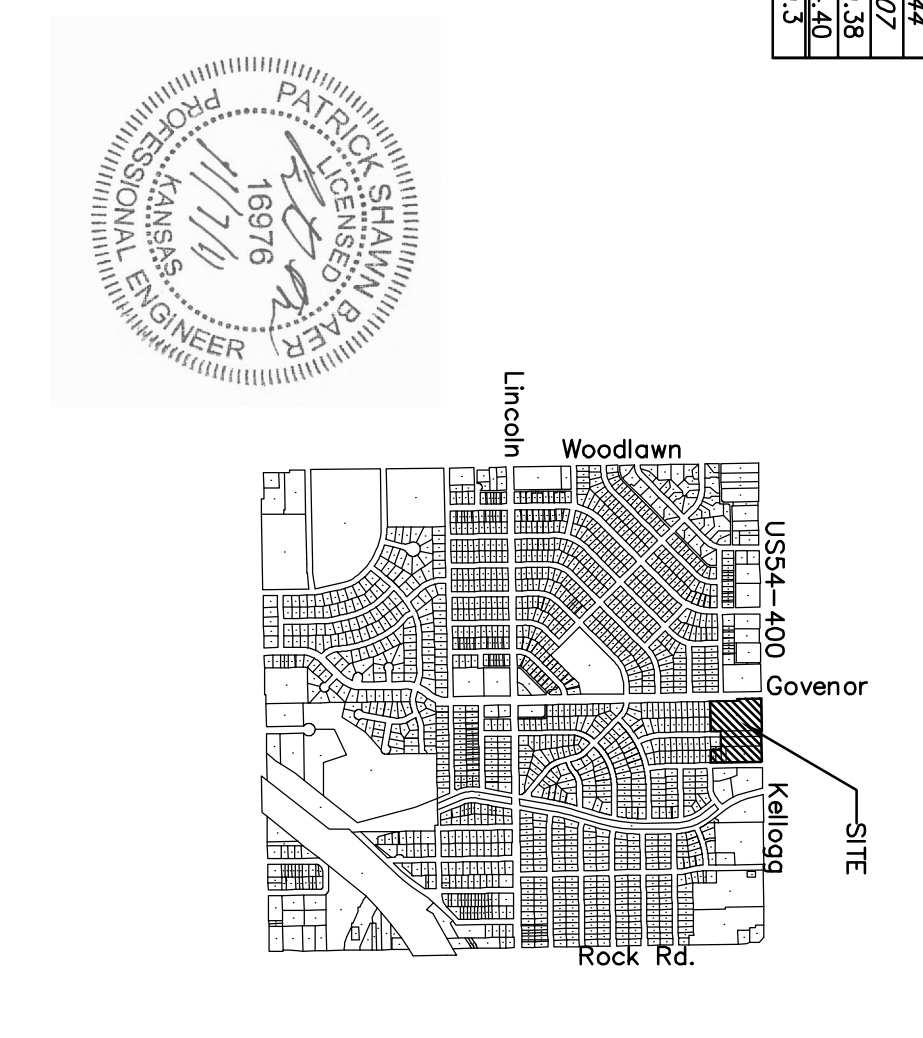


Existing Conditions

Basin #	Area (sq. ft.)	Area (acres)	Runoff (cfs)	Tc (min)	Q2 (cfs)	Q5 (cfs)	Q10 (cfs)	Q100 (cfs)
1 Whittier Offsite	26,763	0.61	0.76	15.0	2.71	2.47	2.83	4.00
2 East Backyard Offsite	16,112	0.37	0.26	15.0	1.08	1.28	1.47	2.07
3 West of Whittier	130,510	4.35	0.91	15.0	15.27	18.18	20.81	29.38
4 East of Whittier	138,528	3.64	0.85	15.0	15.08	18.10	20.81	29.38
Existing Site Peak Discharge in Calhoun = *			36.8		36.8	42.0	47.0	59.3

Proposed Conditions

Basin #	Area (sq. ft.)	Area (acres)	Runoff (cfs)	Tc (min)	Q2 (cfs)	Q5 (cfs)	Q10 (cfs)	Q100 (cfs)
1	15,887	0.36	0.31	15.0	1.26	1.14	1.31	1.82
2	25,977	0.60	0.31	15.0	2.08	2.47	2.83	4.00
3	27,591	0.63	0.31	15.0	2.21	2.83	3.01	4.25
4	24,412	0.56	0.31	15.0	1.95	2.33	2.66	3.76
5	12,802	0.29	0.31	15.0	1.07	1.20	1.32	1.82
6	12,802	0.29	0.31	15.0	1.07	1.20	1.32	1.82
7	5,354	0.12	0.31	15.0	0.75	0.89	1.02	1.44
8	5,375	0.12	0.31	15.0	0.75	0.89	1.02	1.44
9	15,689	0.36	0.31	15.0	1.26	1.49	1.71	2.42
10	34,242	0.79	0.31	15.0	2.74	3.27	3.74	5.28
11	50,455	1.16	0.31	15.0	3.72	4.46	5.09	7.07
12	50,455	1.16	0.31	15.0	3.72	4.46	5.09	7.07
13	26,763	0.61	0.76	15.0	1.79	2.13	2.44	3.44
14	16,112	0.37	0.26	15.0	1.08	1.28	1.47	2.07
15	130,510	4.35	0.91	15.0	15.04	18.00	20.81	29.38
16	138,528	3.64	0.91	15.0	15.00	18.00	20.81	29.38
17	16,281	0.37	0.31	15.0	2.22	2.54	3.02	4.27
Proposed Peak Discharge into Kellogg = *			8.6		10.3	11.8	13.6	18.8



REVISED DRAINAGE PLAN
Mike Stevens Motors Add.

Notes: No ERI4 SP14 note on this property, as of October 31, 2007 per ERI4 RP19, Page 57 of 207 for Sedgwick County, Kansas effective February 2, 2007.

Baumgardner & Associates, Inc.
 315 E. 10th St., Wichita, KS 67201 P: 316.262.7271 F: 316.262.8189
 20700 S. Broadway, Suite 100, Overland Park, KS 66207 P: 913.666.1100 F: 913.666.1101
 E:\PROJECTS\Mike Stevens Motors 2nd Add. \Water Resources\KSW2011\DWG