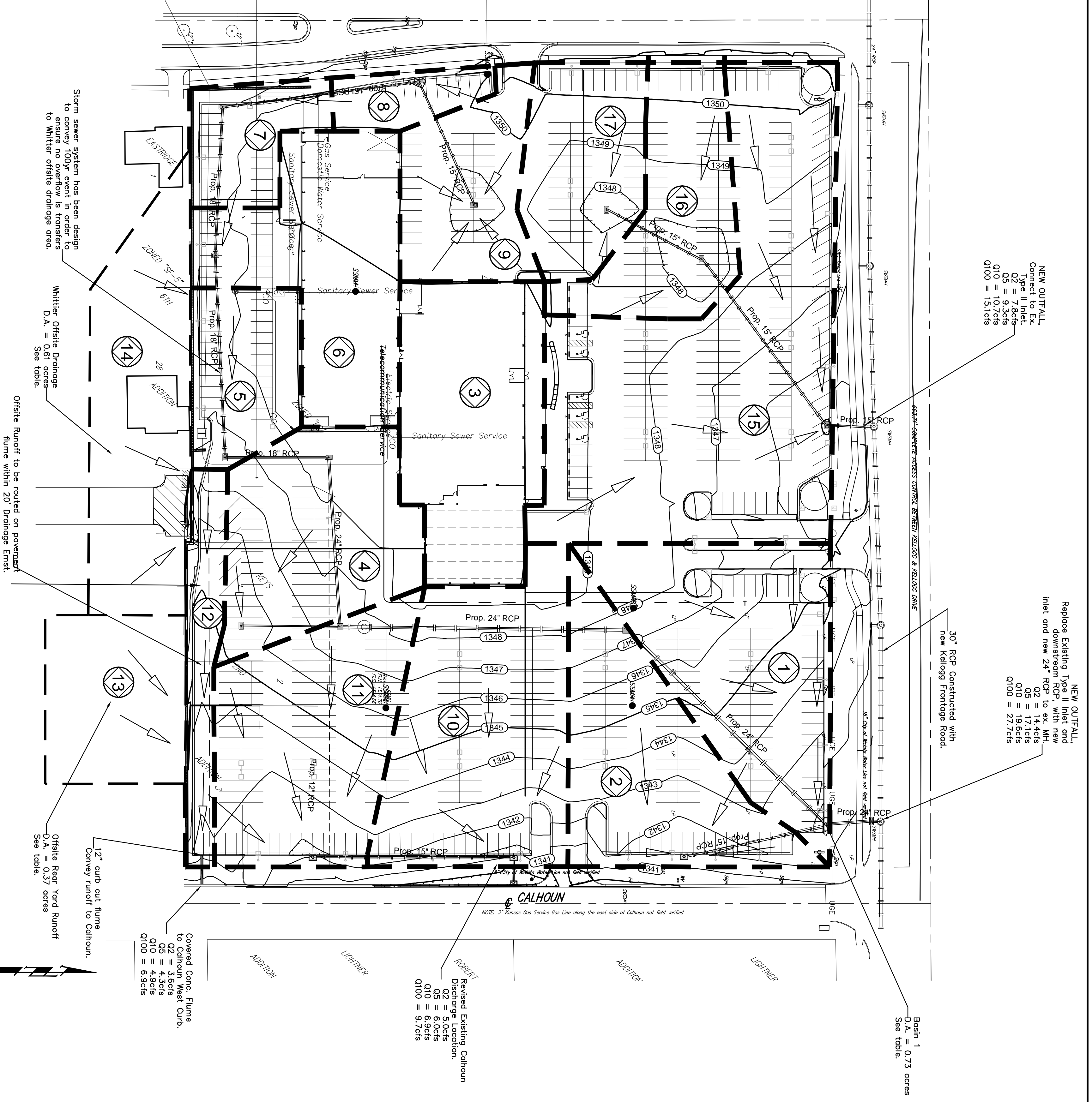
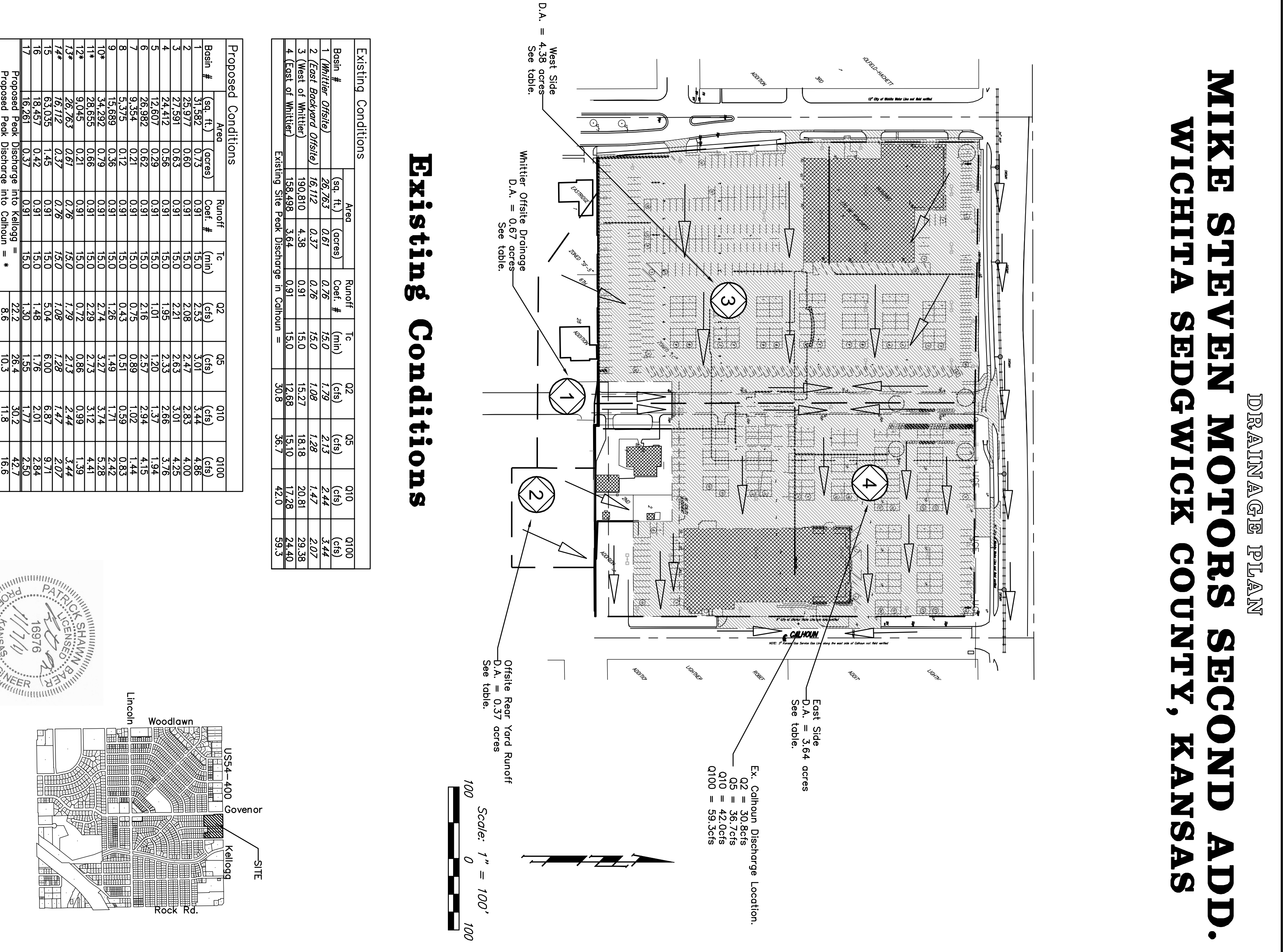
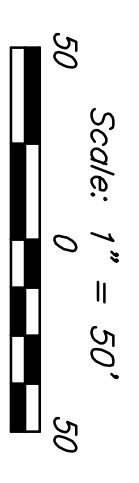


DRAINAGE PLAN

MIKE STEVEN MOTORS SECOND ADD. WICHITA SEDGWICK COUNTY, KANSAS



Proposed Conditions



Existing Conditions

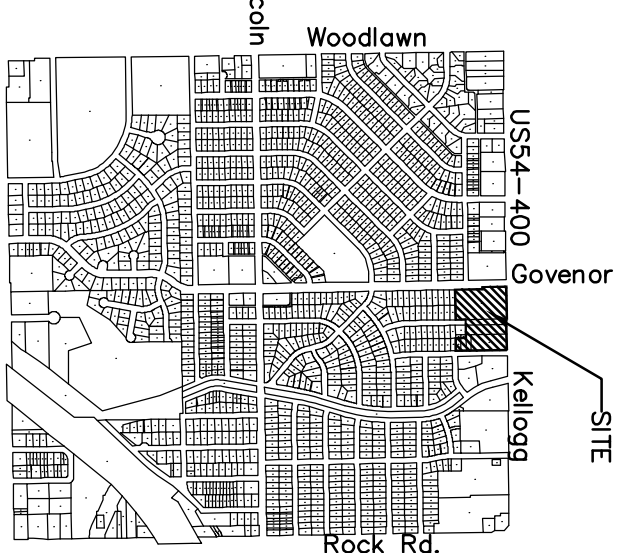
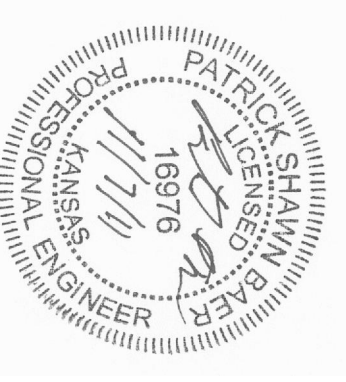
Bath #	Area		Runoff		Tc		Q2		Q5		Q10		Q100	
	(sq. ft.)	(acres)	(cfs)	(in)	(cfs)	(in)	(cfs)	(in)	(cfs)	(in)	(cfs)	(in)	(cfs)	(in)
1	28,725	0.67	1.20	0.26	1.20	0.26	1.20	0.26	1.20	0.26	1.20	0.26	1.20	0.26
2	16,173	0.37	0.72	0.16	0.72	0.16	0.72	0.16	0.72	0.16	0.72	0.16	0.72	0.16
3	150,810	4.38	6.36	1.50	6.36	1.50	6.36	1.50	6.36	1.50	6.36	1.50	6.36	1.50
4	158,498	3.64	6.36	1.50	6.36	1.50	6.36	1.50	6.36	1.50	6.36	1.50	6.36	1.50
Existing Site Peak Discharge in Calhoun =			30.8		36.7		42.0		42.0		59.3		59.3	

Bath #	Area		Runoff		Tc		Q2		Q5		Q10		Q100	
	(sq. ft.)	(acres)	(cfs)	(in)	(cfs)	(in)	(cfs)	(in)	(cfs)	(in)	(cfs)	(in)	(cfs)	(in)
1	31,582	0.73	0.91	0.20	2.53	0.61	3.01	0.74	3.44	0.86	4.18	1.04	4.86	1.23
2	25,977	0.60	0.91	0.20	2.08	0.52	2.47	0.62	2.83	0.70	3.08	0.76	3.40	0.86
3	27,591	0.63	0.91	0.20	2.21	0.55	2.63	0.66	3.08	0.74	3.28	0.80	3.52	0.90
4	27,444	0.63	0.91	0.20	2.21	0.55	2.63	0.66	3.08	0.74	3.28	0.80	3.52	0.90
5	12,802	0.29	0.91	0.20	1.81	0.45	1.90	0.46	2.04	0.49	2.14	0.51	2.24	0.55
6	26,982	0.62	0.91	0.20	2.16	0.54	2.57	0.64	2.94	0.73	3.14	0.79	3.44	0.86
7	9,354	0.21	0.91	0.20	0.75	0.19	0.89	0.22	1.02	0.25	1.14	0.28	1.33	0.33
8	3,373	0.08	0.91	0.20	0.43	0.11	0.51	0.13	0.59	0.15	0.63	0.17	0.72	0.18
9	18,729	0.43	0.91	0.20	1.24	0.31	1.47	0.37	1.74	0.43	1.94	0.48	2.18	0.55
10*	34,292	0.79	0.91	0.20	2.24	0.56	2.72	0.68	3.12	0.74	3.41	0.81	3.61	0.91
11*	28,655	0.66	0.91	0.20	2.29	0.57	2.73	0.68	3.12	0.74	3.41	0.81	3.61	0.91
12*	26,783	0.61	0.91	0.20	2.17	0.54	2.59	0.64	2.94	0.73	3.14	0.79	3.44	0.86
13*	26,783	0.61	0.91	0.20	2.17	0.54	2.59	0.64	2.94	0.73	3.14	0.79	3.44	0.86
14*	63,035	1.45	0.91	0.20	5.04	1.26	6.00	1.50	6.87	1.71	7.74	1.96	8.71	2.21
15	18,457	0.42	0.91	0.20	1.48	0.37	1.76	0.43	2.01	0.49	2.24	0.55	2.50	0.63
16	18,457	0.42	0.91	0.20	1.48	0.37	1.76	0.43	2.01	0.49	2.24	0.55	2.50	0.63
17	18,457	0.42	0.91	0.20	1.48	0.37	1.76	0.43	2.01	0.49	2.24	0.55	2.50	0.63
Proposed Peak Discharge into Kellogg =			30.8		36.7		42.0		42.0		59.3		59.3	
Proposed Peak Discharge into Calhoun =			8.9		10.3		11.8		13.3		16.8		18.3	

Downstream Channel Protection:
Downstream Channel Protection is not required for this addition because the approved site plan shows the channel is in good condition and the net impervious area and in turn decrease the discharge storm water volumes for the site.

Storm Water Quality Treatment:
A Private Project Drainage Plan (0001PP060753) has been approved for the site improvements, currently under construction. A Water Quality unit has been constructed to meet the Water Quality requirements for this site.

EMMA Notes:
No FEMA SFHA exists on this property as of October 31, 2007 per FEMA FIRW Form 587 of 700, Sedgwick County, Kansas, effective February 2, 2007.



REVISED DRAINAGE PLAN

Mike Stevens Motors Add.

Baughman Company, P.A.
315 E. 18th St. Wichita, KS 67211 | 316.262.7271 | 316.262.6149
Baughman
REGISTERED PROFESSIONAL ENGINEER | KANSAS | LICENSE NO. 18978

Baughman
REGISTERED PROFESSIONAL ENGINEER | KANSAS | LICENSE NO. 18978

E:\PROJECTS\Mike Stevens Motors 2nd Add.\Water Resources\MS2nd Drainage Plan.DWG

1 October 2011