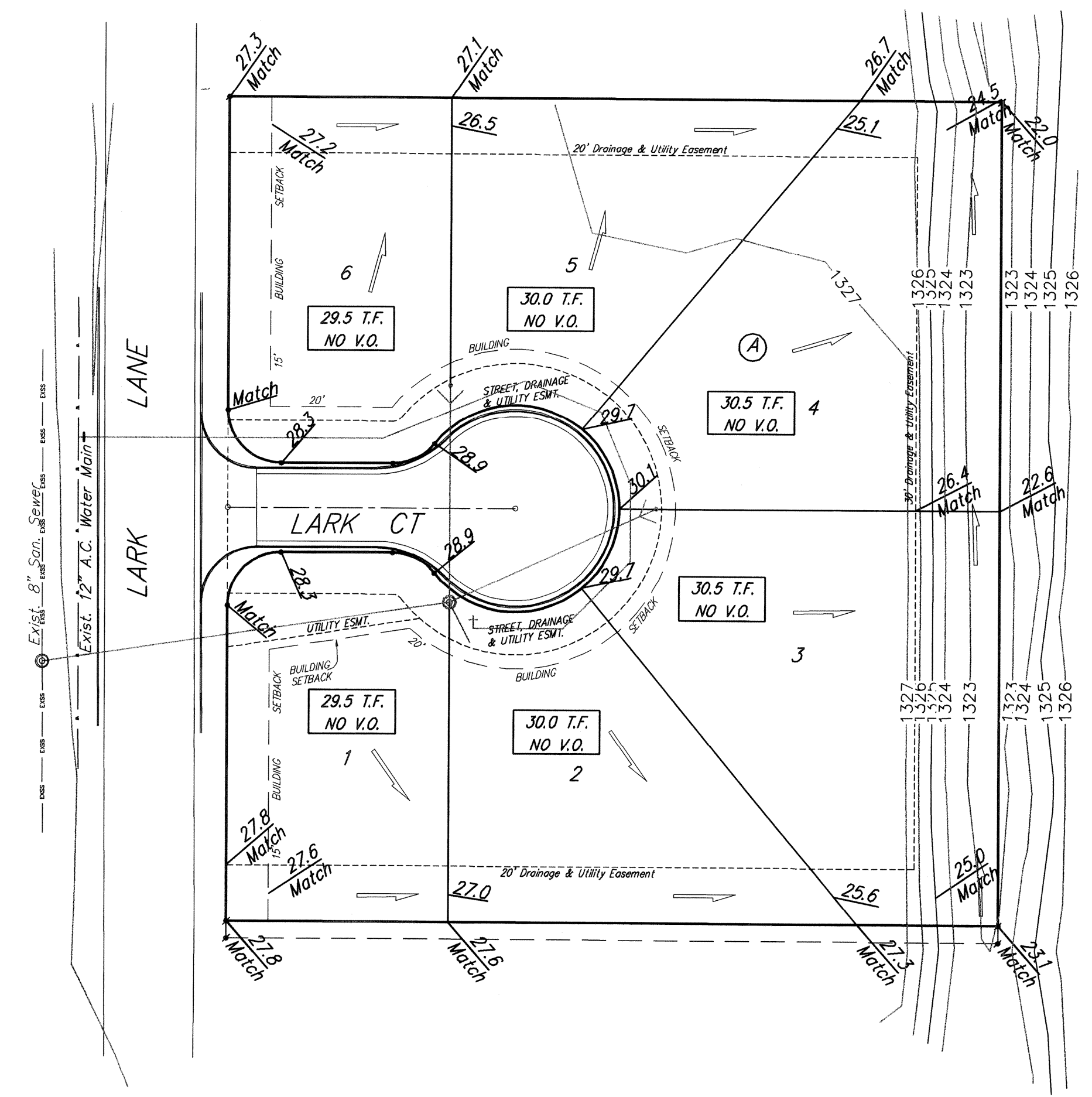
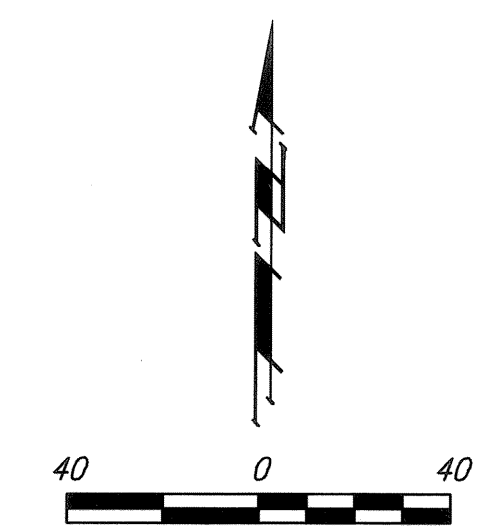
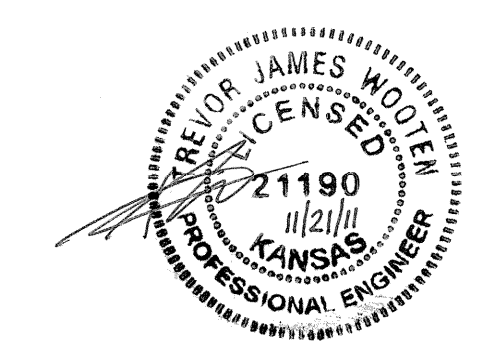


BENCHMARKS:
 SQUARE CUT TOP OF CURVE 9
 FEET WEST OF NORTHWEST CORNER
 OF LOT AT 1900 S. LARK
 ELEV.=1328.02 (NGVD29)



- NOTES:
1. PROPOSED TOP OF FOUNDATION ELEVATIONS ARE SHOWN ON PLANS. CONTRACTOR TO SET FINISHED FLOOR AND GARAGE FLOOR ELEVATIONS. ALL STREET ELEVATIONS SHOWN ON PLANS ARE FOR TOP OF CURB (FULL-HEIGHT).
 3. LOT DIMENSIONS HAVE BEEN OMITTED ON THIS PLAN. REFER TO THE RECORDED PLAT FOR FINAL DIMENSION, EASEMENT, & BUILDING SETBACK INFORMATION.
 5. A DRAINAGE PLAN HAS BEEN DEVELOPED FOR THIS SUBDIVISION AND IS ON FILE WITH THE CITY OF WICHITA, KANSAS. DRAINAGE INTENT SHALL REMAIN AS DEPICTED OR AS MODIFIED WITH THE APPROVAL OF THE CITY ENGINEER OF THE CITY OF WICHITA, KANSAS. NO OBSTRUCTIONS WHICH IMPEDE THE FLOW OF THIS DRAINAGE PLAN SHALL BE ALLOWED.
 6. ALL ELEVATIONS SHOWN ARE NGVD29 DATUM.

Existing Grade



		STEVE KELLEY 6TH ADDITION	
		GRADING PLAN WICHITA, KANSAS	
<small>Baughman Company, P.A. 315 Ellis St. Wichita, KS 67211 P 316-2627271 F 316-2620149 ENGINEERING SURVEYING PLANNING LANDSCAPE ARCHITECTURE</small>			
PROJECT NUMBER	DESIGN	TJW	TJW
REVISIONS:	APPROVED	DATE	11/11
	SCALE	Noted	
	SHEET	1 OF 1	
Grade.dwg			