

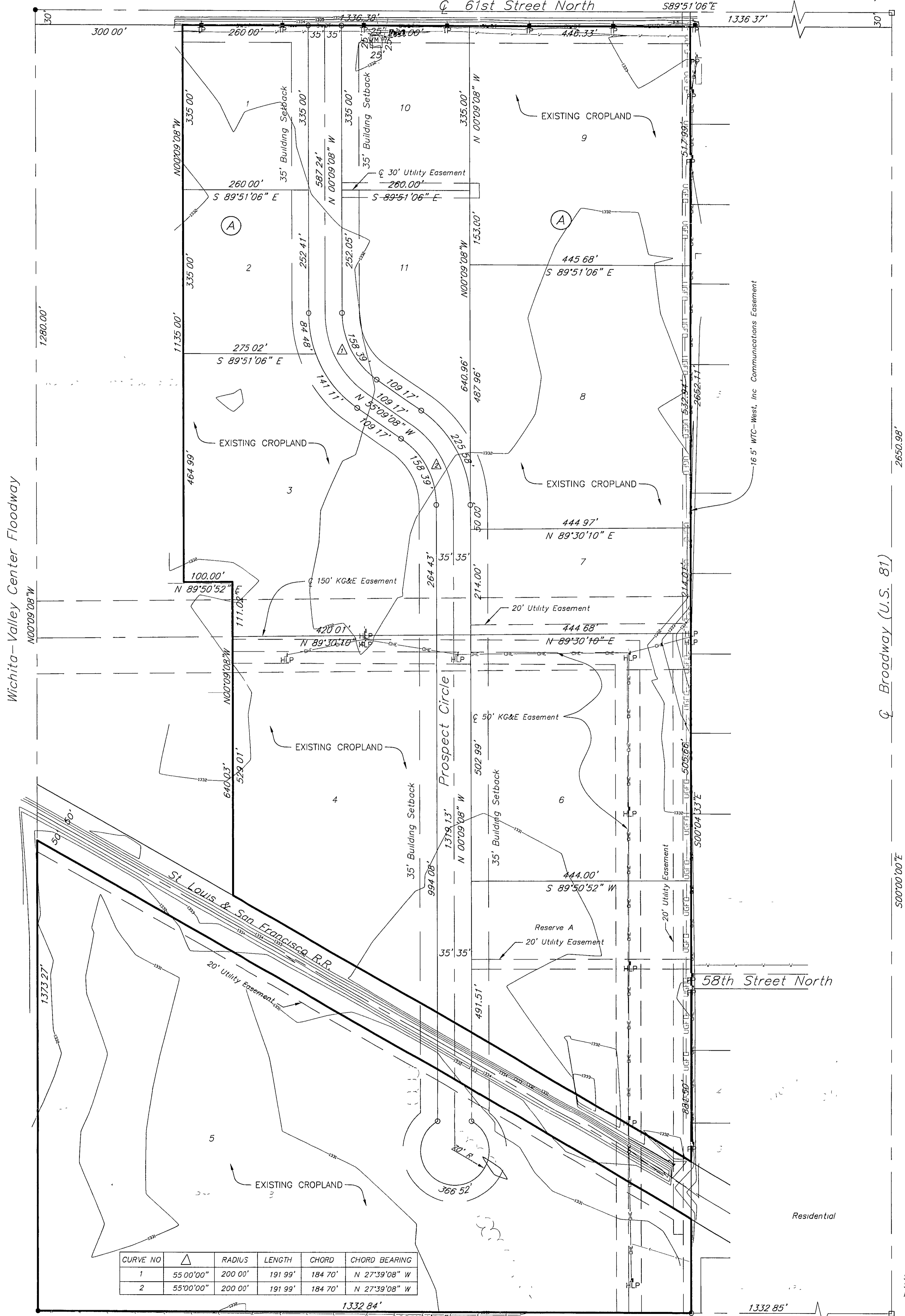
# AIR CAPITOL INDUSTRIAL PARK PRELIMINARY PLAT

## PARK CITY, SEDGWICK COUNTY, KANSAS

NW Cor NE 1/4  
Sec 17-26S-1E  
Found 1/2" Rebar

West 1/2 Section 17, Township 26 South, Range 1 East of the 6th P.M

NE Cor NE 1/4  
Sec 17-26S-1E  
Found 1/2" Rebar



CURVE NO	△	RADIUS	LENGTH	CHORD	CHORD BEARING
1		55'00"00"	200'00"	191'99"	N 27°39'08" W
2		55'00"00"	200'00"	191'99"	N 27°39'08" W

**LEGEND**  
 ● 5/8" Rebar (found)  
 ○ 1/2" Rebar (found)  
 □ 5/8" Set Rebar B WARD L S #920

**BENCHMARK**  
 Top of 1/2" Rebar  
 C 61st and Broadway  
 Elev = 1337.20

Filename: 01062\preplat

516 S Market, Wichita, KS 67202 316/264-0242

SW Cor NE 1/4  
Sec 17-26S-1E  
Found 5/8" Rebar

SE Cor NE 1/4  
Sec 17-26S-1E  
Found 1/2" Rebar

Louis Robelli, Owner  
20411 W 13th  
Goddard, Kansas 67052

Zoned Industrial  
Acreage 67+/-  
Surveyed 10/01  
Platted 10/01

