

- Basin Boundary
- Proposed Storm Sewer
- ⇒ Direction of Storm Water Flow
- ⊗ Basin Identification
- Storm Sewer Node

Elevations are in NAVD 88 Datum
 Minimum Pad (Lowest Opening)
 Lots 3 & 4, Block 3
 Elevation = 225.5 (City Datum)
 Elevation = 1412.9 (U.S.G.S.) 1413.4 (NGVD88)

Bench Mark: #1
 Square Cut top of NW. end
 Headwall of R.C.B.C. 9' NW. of
 the SE. (Southerly) Corner of
 Lot 2, Block 4, Mediterranean
 Plaza Addition.
 Elevation = 1416.10 (NAVD88)

Bench Mark: #2
 Square Cut top of E. end
 Headwall of R.C.B.C. 96'W. & 71'
 N. of the NE. Corner of Lot
 2, Block 3, Mediterranean Plaza
 Addition.
 Elevation = 1417.02 (NAVD88)

IMPERVIOUS AREAS (Ac)

Basin	Existing	Proposed*
Basin A	0.0	0.4
Basin B	0.0	0.4
Basin C	0.0	4.7
Basin D	0.0	0.8
Basin E	0.0	0.8
Basin F	0.0	6.7
Basin G	0.0	0.2
Basin H	0.0	0.5
Basin I	0.0	0.4
Basin J	0.1	0.4
Basin K	0.3	2.5
Basin L	0.0	5.0
TOTAL	0.4	22.8

*Assumed 100% for street basins and 85% for all others

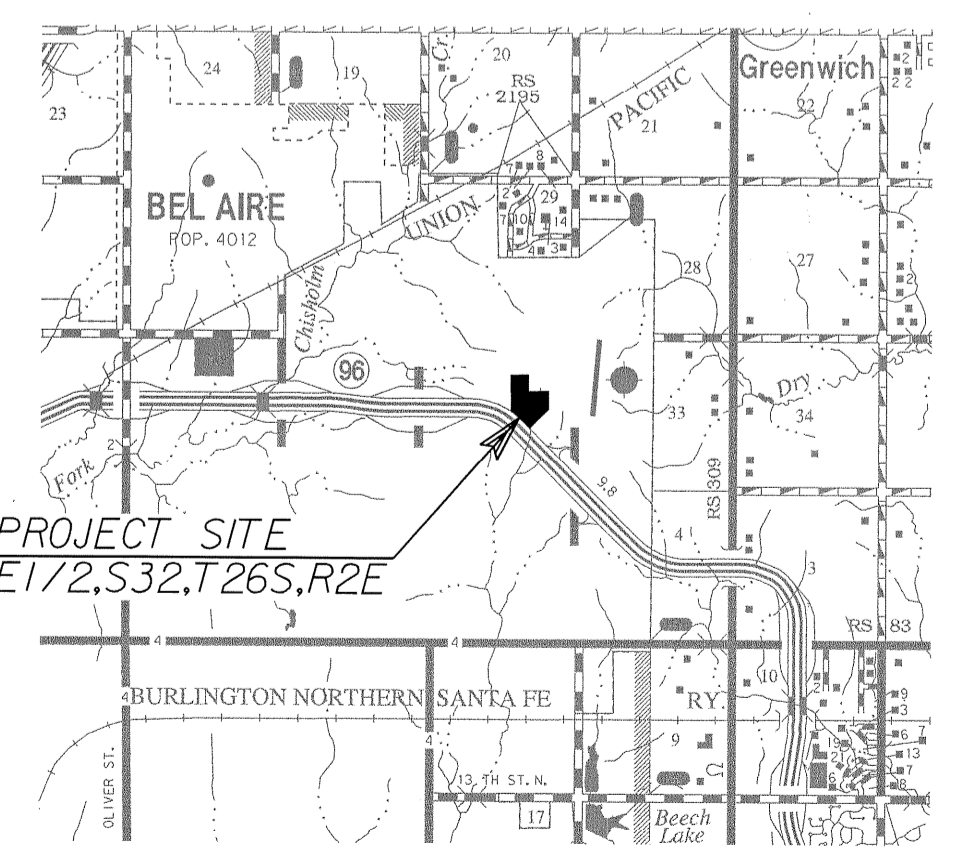
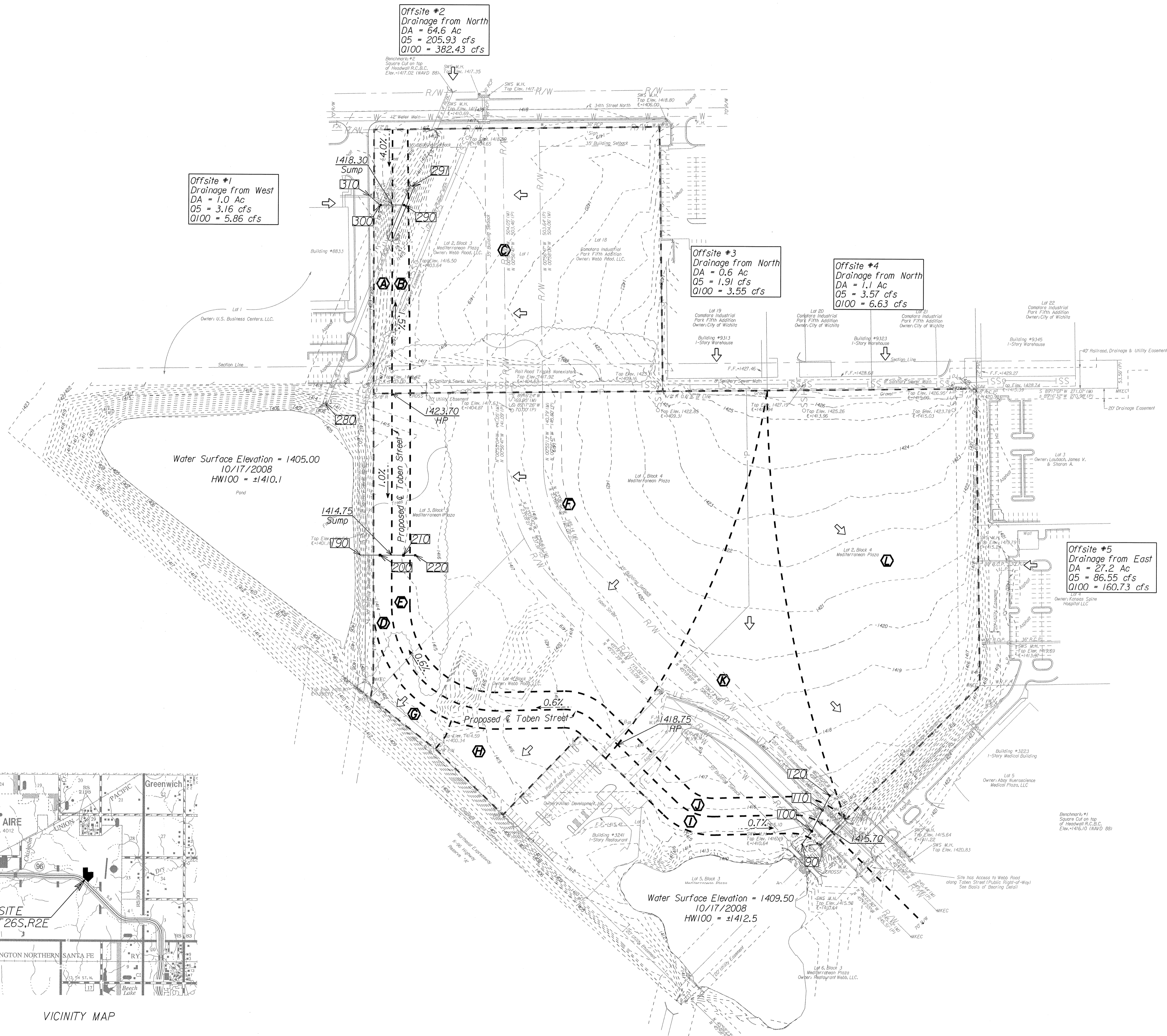
Offsite #1
 Drainage from West
 DA = 1.0 Ac
 Q5 = 3.16 cfs
 Q100 = 5.86 cfs

Offsite #2
 Drainage from North
 DA = 64.6 Ac
 Q5 = 205.93 cfs
 Q100 = 382.43 cfs

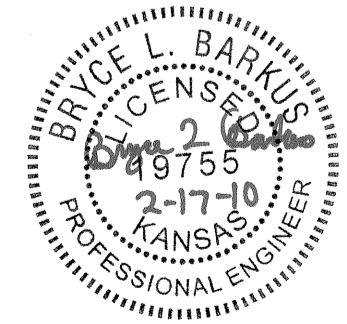
Offsite #3
 Drainage from North
 DA = 0.6 Ac
 Q5 = 1.91 cfs
 Q100 = 3.55 cfs

Offsite #4
 Drainage from North
 DA = 1.1 Ac
 Q5 = 3.57 cfs
 Q100 = 6.63 cfs

Offsite #5
 Drainage from East
 DA = 27.2 Ac
 Q5 = 86.55 cfs
 Q100 = 160.73 cfs



VICINITY MAP



Ameritrack
 WEST
 12469 SW 15th
 Benton, KS 67017
 O: 316-778-2213
 F: 316-778-1204

No.	Date	By	Approved

POE & ASSOCIATES OF KANSAS, INC.
 CONSULTING ENGINEERS
 5940 E. Central, Suite 200 • Wichita, KS 67208-4242
 Phone 316685-4114 • FAX 316685-4444

FINAL

Designed By: BLB
 Drawn By: BLB
 Drawing: 463_Drainage Plan.dgn
 Date: February 17, 2010