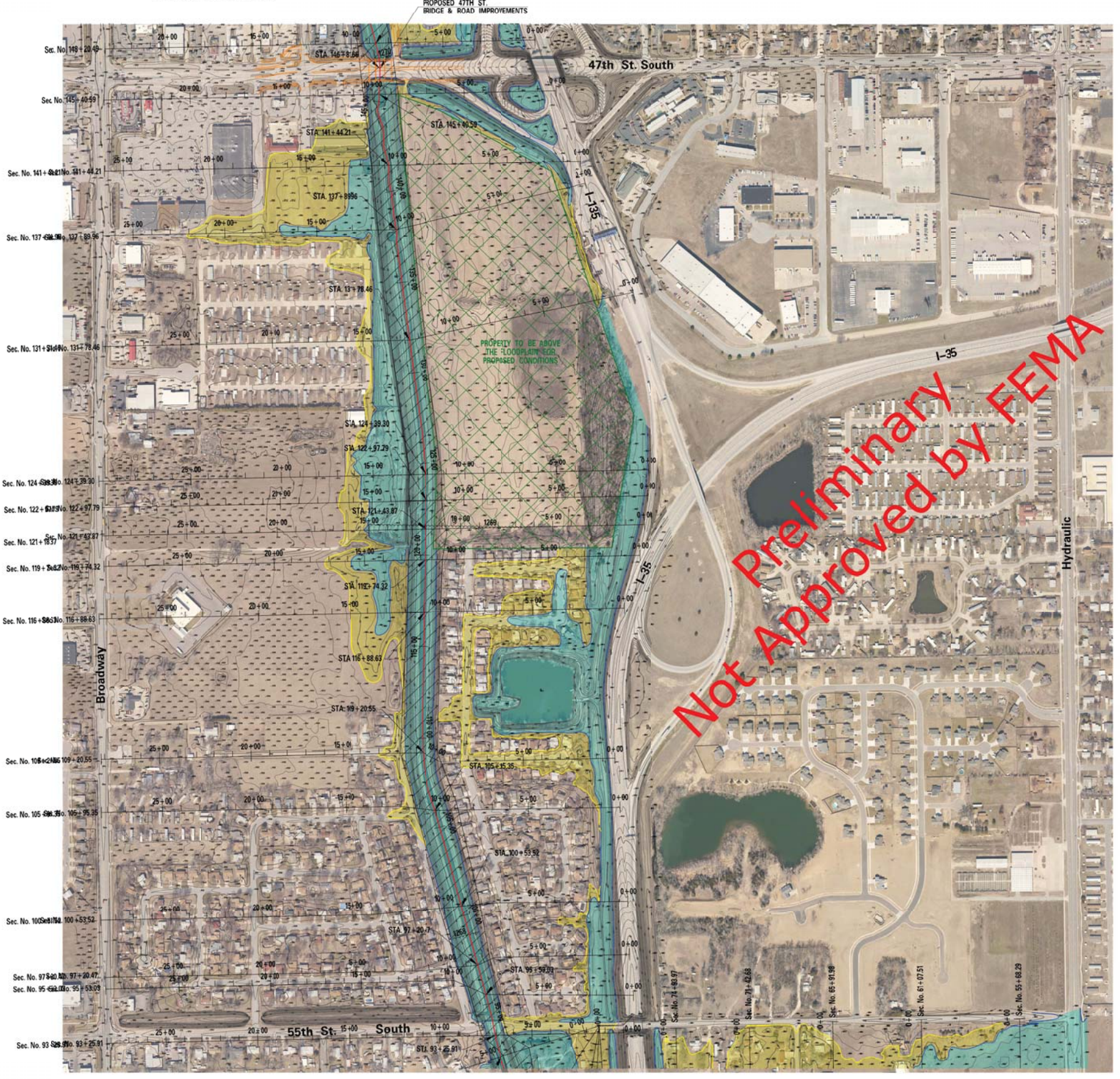


**LEGEND**

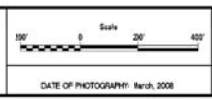
- 1% CHANCE FLOODPLAIN BOUNDARY
- 1% CHANCE FLOODWAY BOUNDARY
- 0.2% CHANCE FLOODPLAIN BOUNDARY
- STREAM DISTANCE IN THOUSANDS OF FEET ABOVE MOUTH
- HEC-RAS CROSS SECTION
- BASE FLOOD ELEVATIONS (INVD 88)



Not Approved by FEMA

PROPOSED PLAT AND CONSTRUCTION  
SHEET 13 OF 13

Plotted By: ssp Date: 04-20-2009 4:15 PM  
 File: E:\2009\04\20\2009\Proposed Plat & Construction-13.dwg



REVISIONS

**THE CITY OF WICHITA**

FLOOD INSURANCE  
STUDY UPDATE  
2002  
BIG SLOUGH SOUTH  
PROFESSIONAL ENGINEERING CONSULTANTS, P.A.

**5540**  
SECTION 21  
T 28S - R 1E